

NOTES

FOR ELASTOMERIC BEARINGS, SEE SPECIAL PROVISIONS.
 AT ALL POINTS OF SUPPORT AT END BENTS, NUTS FOR ANCHOR BOLTS ARE TO BE TIGHTENED FINGER TIGHT AND THEN BACKED OFF 1/2 TURN. THE THREAD OF THE NUT AND BOLT SHALL THEN BE BURRED WITH A SHARP POINTED TOOL.

THE 51mm Ø PIPE SLEEVE SHALL BE CUT FROM SCHEDULE 40 PVC PLASTIC PIPE. THE PVC PLASTIC PIPE SHALL MEET THE REQUIREMENTS OF ASTM D1785.

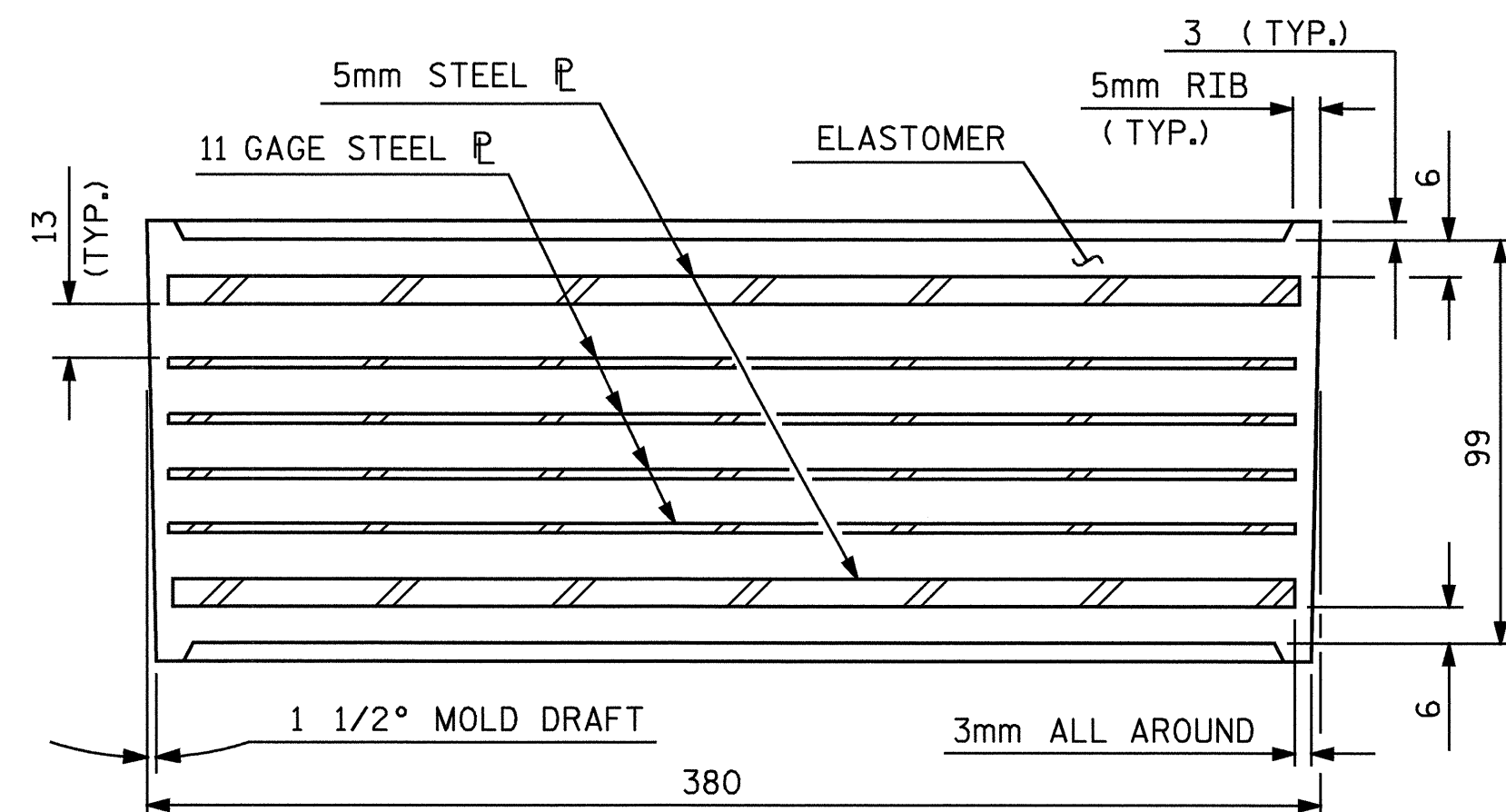
PAYMENT FOR THE PIPE SLEEVES AND THE 102mm Ø X 470mm STANDARD PIPE SHALL BE INCLUDED IN THE SEVERAL PAY ITEMS.

FOR AASHTO M270 GRADE 345W STRUCTURAL STEEL, SOLE PLATE SHALL BE AASHTO M270 GRADE 345W AND SHALL NOT BE GALVANIZED, ANCHOR BOLTS AND NUTS SHALL BE GALVANIZED IN ACCORDANCE WITH THE STANDARD SPECIFICATIONS.

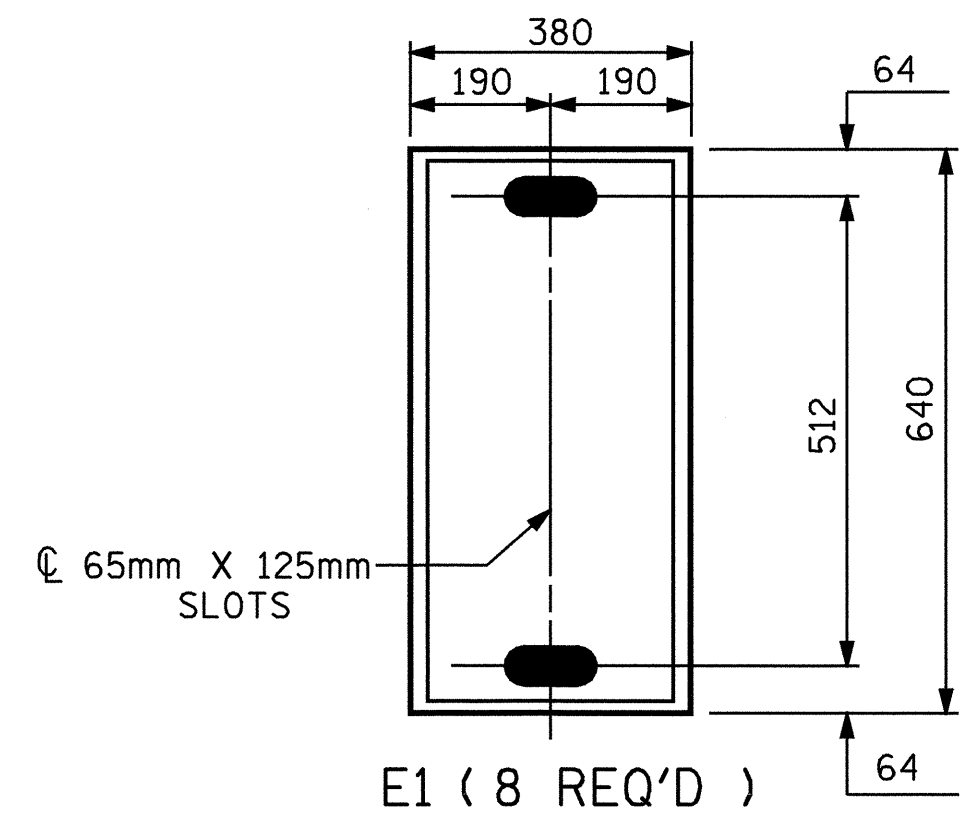
ANCHOR BOLTS SHALL MEET THE REQUIREMENTS OF ASTM A449. NUTS SHALL MEET THE REQUIREMENTS OF AASHTO M291M-12 OR AASHTO M292M-2H. WASHERS SHALL MEET THE REQUIREMENTS OF AASHTO M293M. SHOP DRAWINGS ARE NOT REQUIRED FOR ANCHOR BOLTS, NUTS AND WASHERS. SHOP INSPECTION IS REQUIRED.

WHEN FIELD WELDING THE SOLE PLATE TO THE GIRDER FLANGE, USE TEMPERATURE INDICATING WAX PENS, OR OTHER SUITABLE MEANS, TO ENSURE THAT THE TEMPERATURE OF THE SOLE PLATE DOES NOT EXCEED 149°C. TEMPERATURES ABOVE THIS MAY DAMAGE THE ELASTOMER.

ALL SURFACES OF BEARING PLATES SHALL BE SMOOTH AND STRAIGHT.

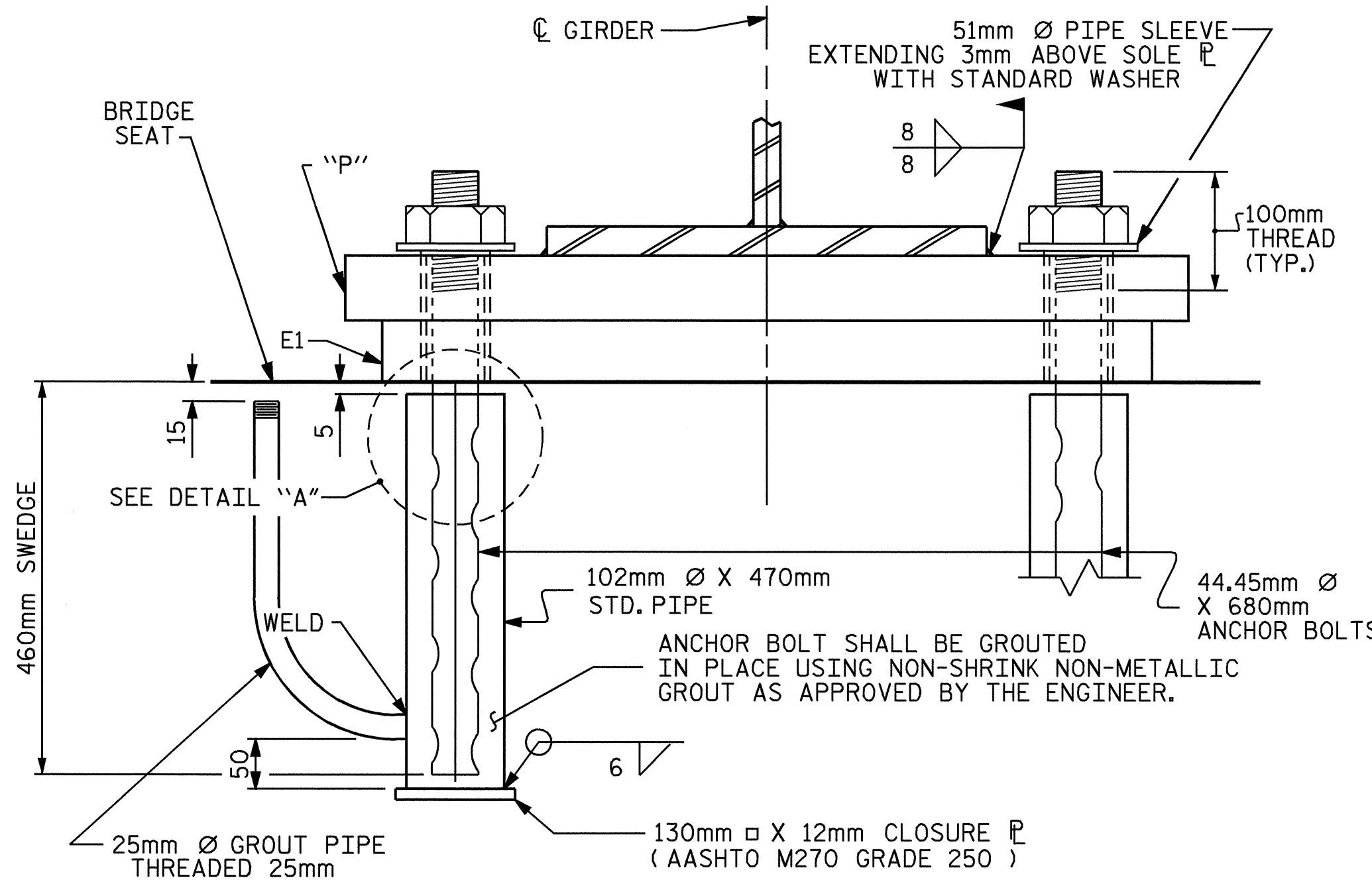


TYPICAL SECTION OF ELASTOMERIC BEARING

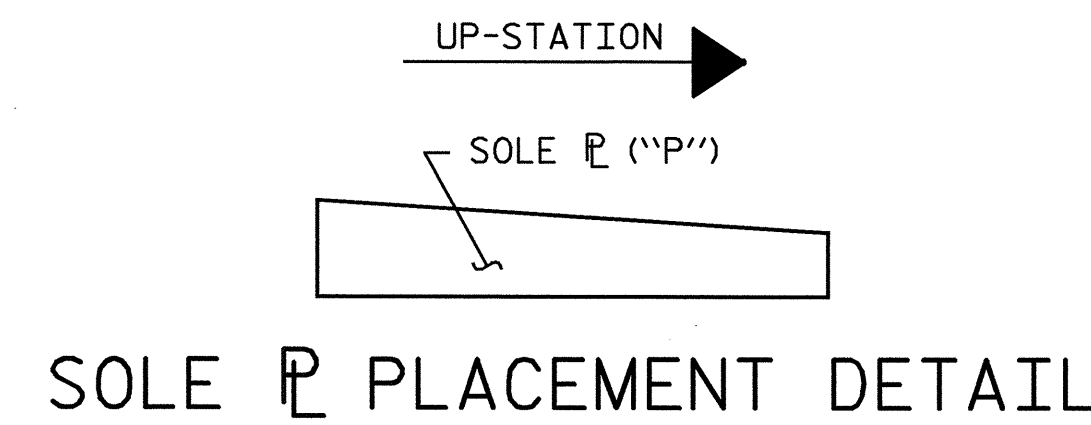


PLAN VIEW OF ELASTOMERIC BEARING

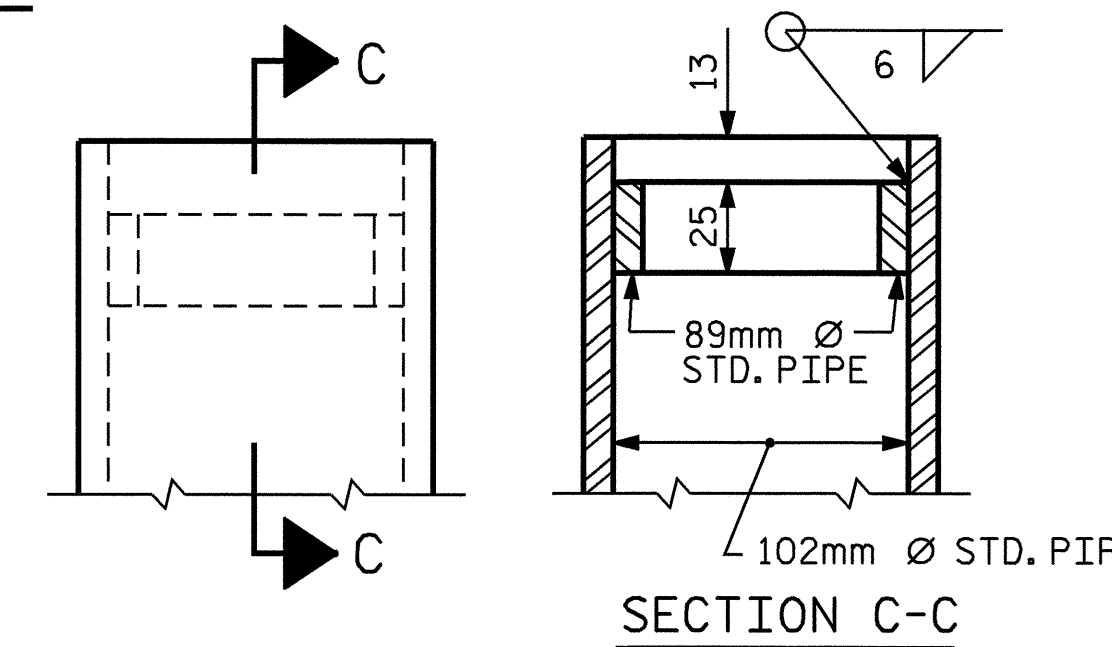
TYPE VI



END VIEW (EXPANSION)



SOLE PLATE PLACEMENT DETAIL

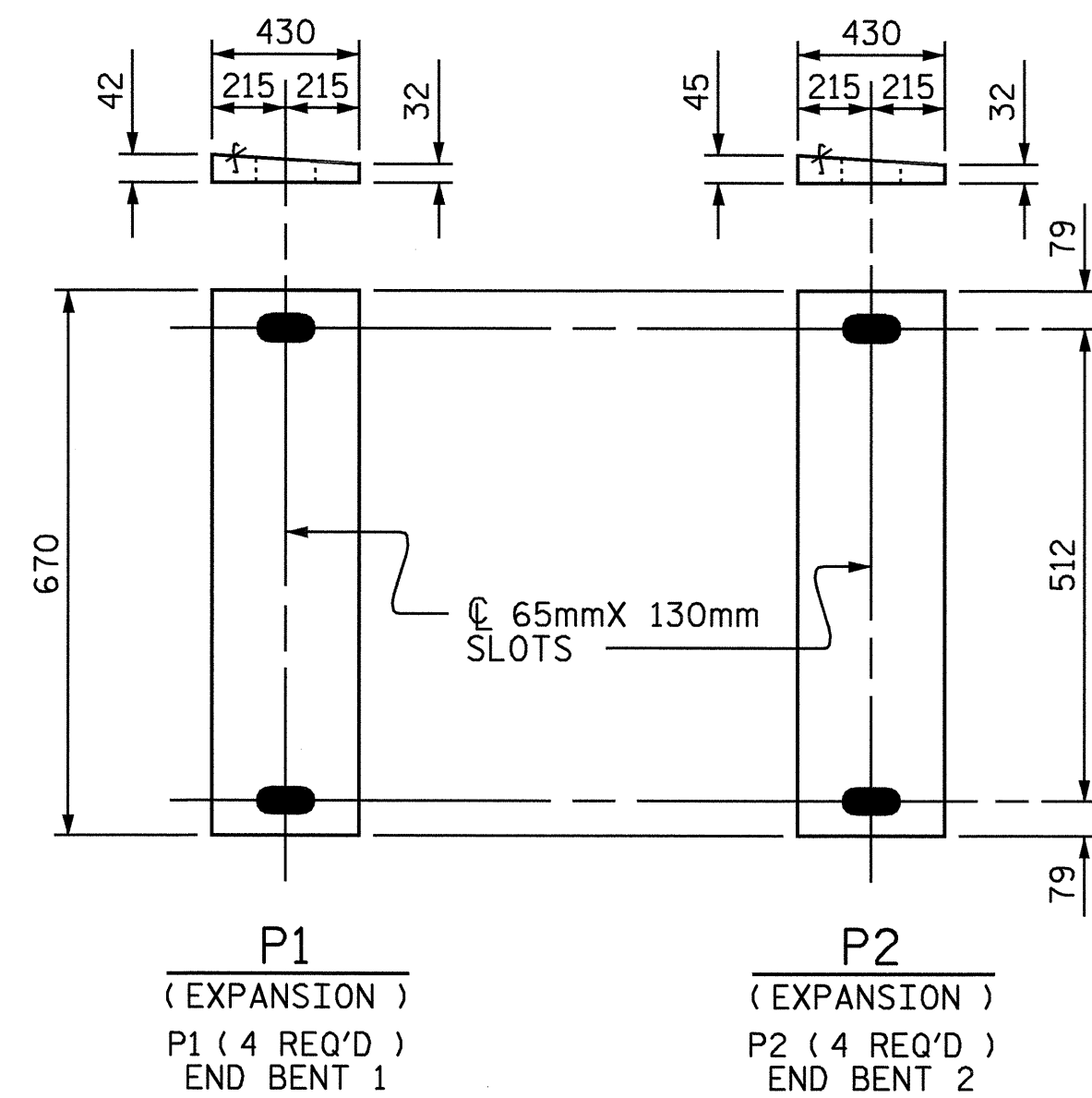


DETAIL "A"

LOAD RATINGS	
	MAX. D.L.+ L.L.
TYPE VI	1134 kN

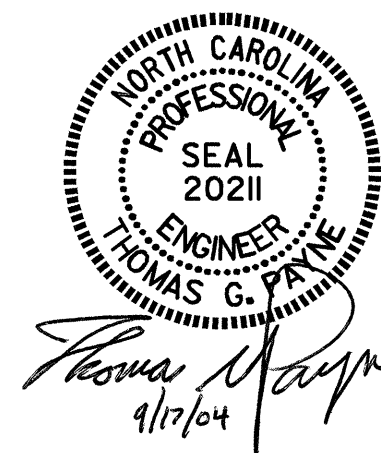
THE CONTRACTOR'S ATTENTION IS CALLED TO THE FOLLOWING PROCEDURES TO ACCOMMODATE GIRDER TRANSLATION AND END ROTATION:

- ONCE THE DECK HAS CURED, THE GIRDERS SHALL BE JACKED AND THE SOLE PLATES AND ELASTOMERIC BEARING SLOTS SHALL BE CENTERED AS NEARLY AS PRACTICAL ABOUT THE BEARING STIFFENER AND ANCHOR BOLTS. THIS OPERATION SHALL BE PERFORMED AT APPROXIMATELY 16° C.
- AFTER CENTERING THE SLOTS ABOUT THE ANCHOR BOLTS, THE SOLE PLATES SHALL BE FIELD WELDED TO THE GIRDER FLANGES AND ANCHOR BOLTS GROUDED. THE CONTRACTOR MAY PROPOSE ALTERNATE METHODS PROVIDED DETAILS ARE SUBMITTED TO THE ENGINEER FOR REVIEW AND APPROVAL.



SOLE PLATE DETAILS ("P")

PROJECT NO. R-2206B
LINCOLN COUNTY
 STATION: 123+38.105 -L-



STATE OF NORTH CAROLINA DEPARTMENT OF TRANSPORTATION RALEIGH					
ELASTOMERIC BEARING DETAILS (STEEL SUPERSTRUCTURE) (LEFT LANE)					
REVISIONS					
NO.	BY:	DATE:	NO.	BY:	DATE:
1			3		
2			4		

SHEET NO.	S-22
TOTAL SHEETS	86

ASSEMBLED BY : M. J. OSTRISHKO	DATE : 4-2-01
CHECKED BY : E. G. ALLEN	DATE : 4-20-01
DRAWN BY : EEM 10/95	REV. 7/17/98 RWW/LES
CHECKED BY : PEK 10/95	REV. 8/16/99 MAB/LES
	REV. 10/17/00 RWW/LES