

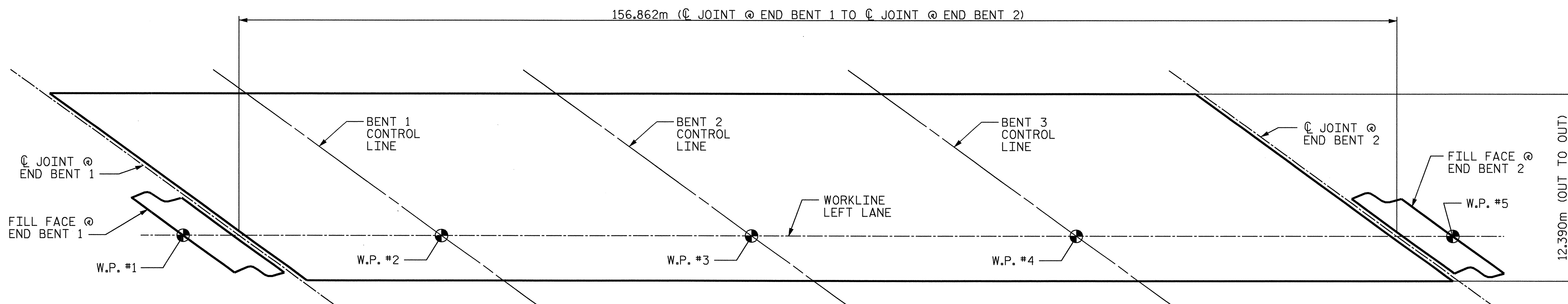
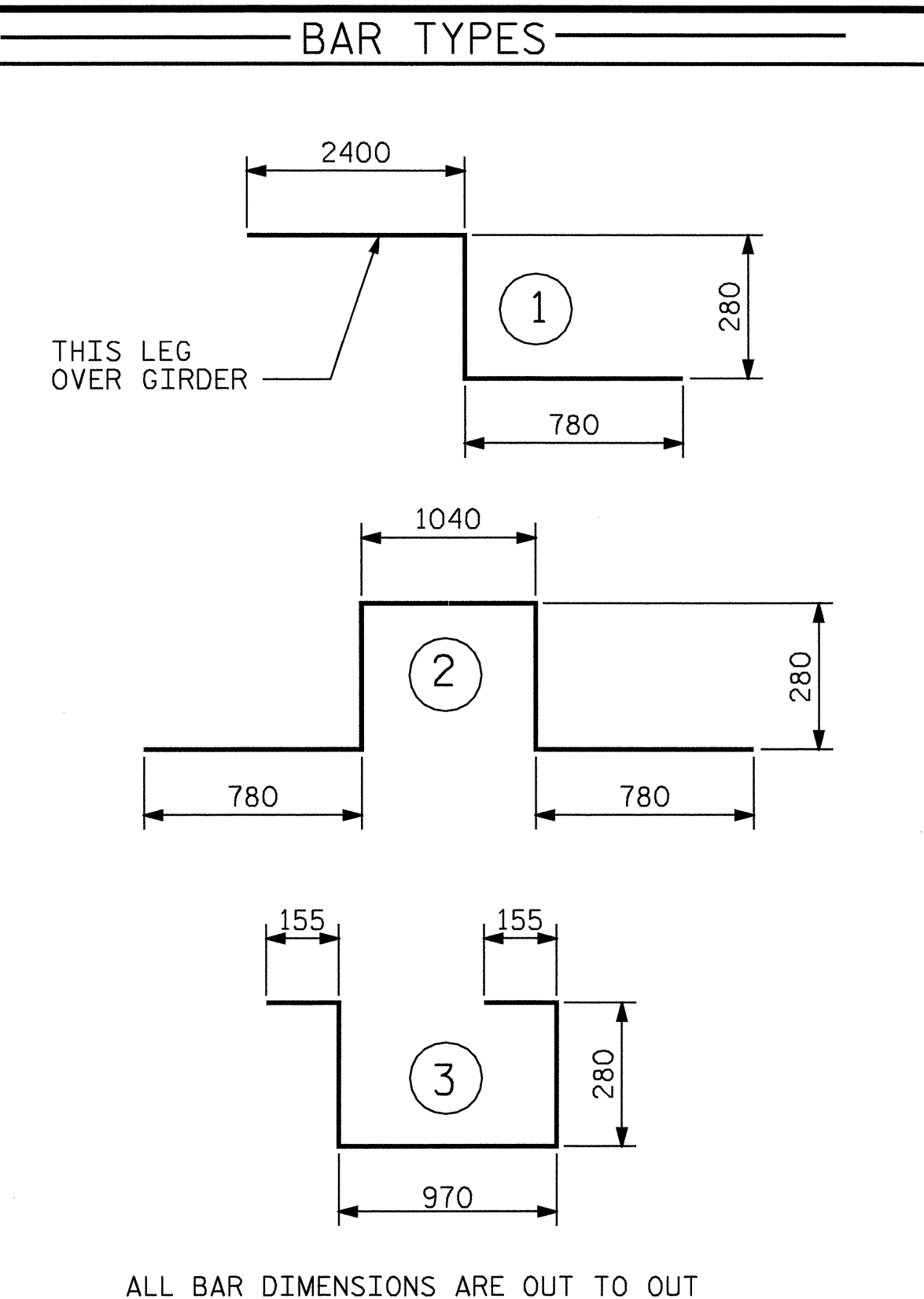
SUPERSTRUCTURE REINFORCING STEEL LENGTHS ARE BASED ON THE FOLLOWING MINIMUM SPLICE LENGTHS

BAR SIZE	SUPERSTRUCTURE EXCEPT APPROACH SLABS, PARAPET, AND BARRIER RAIL		APPROACH SLABS		PARAPET AND BARRIER RAIL
	EPOXY COATED	UNCOATED	EPOXY COATED	UNCOATED	
#13	610	540	610	540	840
#16	770	660	770	660	1050
#19	920	790	1190	790	1330
#22	1580	1060			
#25	2080	1390			

REINFORCING BAR SCHEDULE

SPANS A THRU D

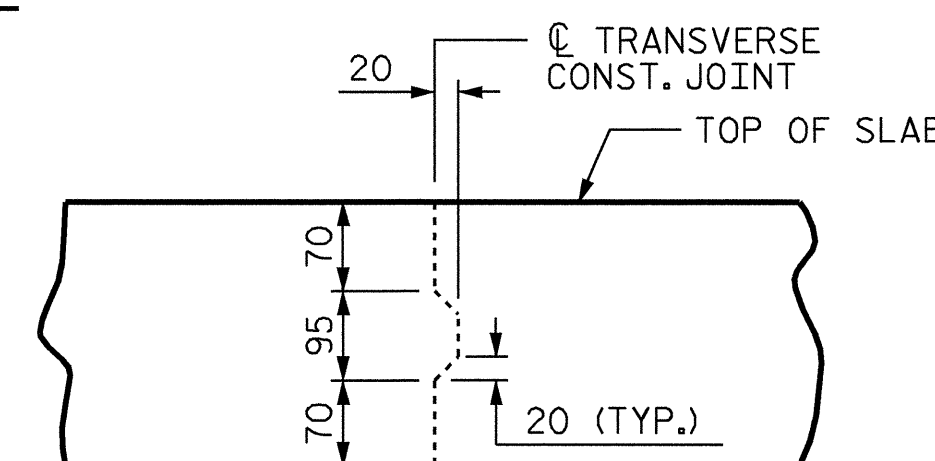
BAR NO.	SIZE	TYPE	LENGTH	WEIGHT	BAR NO.	SIZE	TYPE	LENGTH	WEIGHT	BAR NO.	SIZE	TYPE	LENGTH	WEIGHT			
*A1	990	#16	STR	12240	18807	A201	20	#16	STR	11280	350	*B4	84	#13	STR	8880	741
A2	990	#16	STR	12240	18807	A202	20	#16	STR	10340	321	*B5	164	#19	STR	10460	3834
*A101	20	#16	STR	11280	350	A203	20	#16	STR	9400	292	*B6	84	#13	STR	7660	640
*A102	20	#16	STR	10340	321	A204	20	#16	STR	8460	263	*B7	164	#19	STR	12400	4545
*A103	20	#16	STR	9400	292	A205	20	#16	STR	7520	233	*B8	112	#13	STR	8780	977
*A104	20	#16	STR	8460	263	A206	20	#16	STR	6560	204	*G1	4	#16	STR	11340	70
*A105	20	#16	STR	7520	233	A207	20	#16	STR	5620	174	*K1	20	#19	1	3460	155
*A106	20	#16	STR	6560	204	A208	20	#16	STR	4680	145	*K2	20	#19	2	3160	141
*A107	20	#16	STR	5620	174	A209	20	#16	STR	3740	116	*K3	30	#19	STR	5800	389
*A108	20	#16	STR	4680	145	A210	20	#16	STR	2800	87	*S11	84	#13	3	1840	154
*A109	20	#16	STR	3740	116	A211	20	#16	STR	1840	57	REINFORCING STEEL	=			34216	kg
*A110	20	#16	STR	2800	87	A212	20	#16	STR	900	28	*EPOXY COATED REINFORCING STEEL	=			36868	kg
*A111	20	#16	STR	1840	57	B1	520	#16	STR	16280	13139						
*A112	20	#16	STR	900	28	*B2	84	#13	STR	6280	524						
						*B3	164	#19	STR	9880	3621						



LAYOUT FOR COMPUTING AREA OF REINFORCED CONCRETE DECK SLAB (SQ. METER = 1943.5)

GROOVING BRIDGE FLOORS

BRIDGE DECK	1643.3	SQ.METER
APPROACH SLABS	271.0	SQ.METER
TOTAL	1914.3	SQ.METER



TRANSVERSE CONSTRUCTION JOINT DETAIL

NOTE: SLAB REINFORCING STEEL SHALL BE CONTINUOUS THRU JOINT

SUPERSTRUCTURE BILL OF MATERIAL

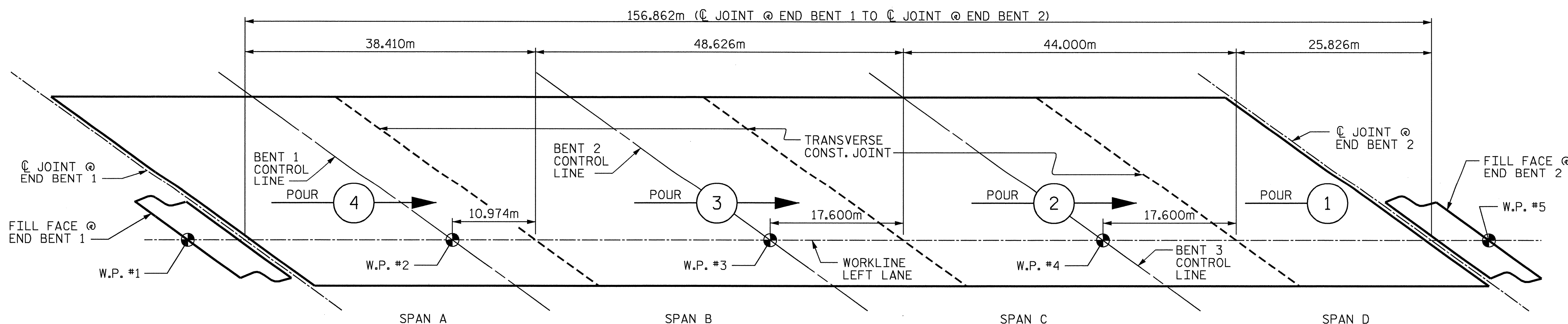
	CLASS AA CONCRETE (CU.METER)	REINFORCING STEEL (kg)	EPOXY COATED REINFORCING STEEL (kg)
SPANS "A THRU D"	535.8	34216	36868
TOTALS **	535.8	34216	36868

** QUANTITIES FOR BARRIER RAIL ARE NOT INCLUDED

POUR SEQUENCE BREAKDOWN

SPANS "A THRU D"	CLASS AA CONCRETE (CU.METER)
POUR #1	90.7
POUR #2	148.2
POUR #3	163.8
POUR #4	133.1
TOTALS **	535.8

** QUANTITIES FOR BARRIER RAIL ARE NOT INCLUDED

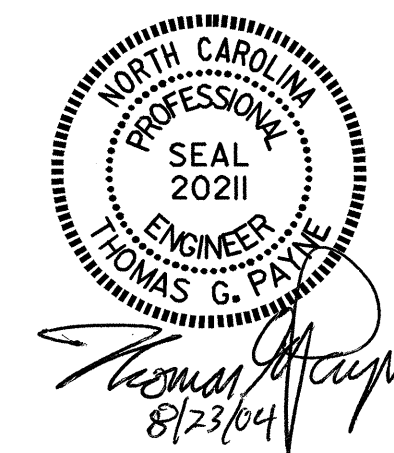


POUR SEQUENCE

INDICATES DIRECTION OF POUR

ASSEMBLED BY : M. J. OSTRISHKO	DATE : 4-2-01
CHECKED BY : E. G. ALLEN	DATE : 4-20-01
DRAWN BY : JMB 5/87	REV. 5/16/97 EEM/RGW
CHECKED BY : SJD 9/87	

20-AUG-2004 15:46
W:\squad1\2206b\Final Plans\str1\2206b01bm.dgn
klayne



PROJECT NO. R-2206B
LINCOLN COUNTY
STATION: 123+38.105 -L-

STATE OF NORTH CAROLINA
DEPARTMENT OF TRANSPORTATION
RALEIGH
STANDARD
SUPERSTRUCTURE
BILL OF MATERIAL
(LEFT LANE)

REVISIONS				SHEET NO.
NO.	BY:	DATE:	NO.	DATE:
1			3	
2			4	

TOTAL SHEETS
86

STR: #1