

NOTES

THE COST OF THE BARRIER RAIL ON THE APPROACH SLAB SHALL BE INCLUDED IN THE LUMP SUM CONTRACT PRICE BID FOR BRIDGE APPROACH SLABS

APPROACH SLAB SHALL NOT BE CONSTRUCTED PRIOR TO COMPLETION OF THE BRIDGE DECK.

FOR REINFORCED BRIDGE APPROACH FILL INCLUDING FABRIC, IMPERMEABLE GEOMEMBRANE, 102mm Ø DRAINAGE PIPE, #78M STONE, AND SELECT MATERIAL, SEE ROADWAY PLANS.

TEMPORARY DRAINAGE AND TEMPORARY BERM AND SLOPE DRAINS WILL BE PAID FOR UNDER THE LUMP SUM PRICE FOR BRIDGE APPROACH SLAB.

AREA BETWEEN THE WINGWALL AND APPROACH SLAB SHALL BE GRADED TO DRAIN THE WATER AWAY FROM THE FILL FACE OF THE BRIDGE AND SHALL BE PAVED. SEE ROADWAY PLANS.

THE 150mm COMP. A.B.C. SHALL EXTEND 3m BEYOND THE END OF THE APPROACH SLAB AND 300mm OUTSIDE OF EACH EDGE OF SLAB.

THE CONTRACTOR MAY USE 100mm TYPE HB ASPHALT CONCRETE BASE COURSE IN LIEU OF 150mm COMP. A.B.C. IF THIS OPTION IS USED, THE BASE COURSE SHALL EXTEND 300mm BEYOND THE END OF THE APPROACH SLAB AND THE WIDTH SHALL BE THE SAME AS THAT OF THE APPROACH SLAB.

THE CONTRACTOR MAY USE 125mm CLASS 'A' CONCRETE BASE IN LIEU OF 150mm COMP. A.B.C. IF THIS OPTION IS USED, THE CONCRETE BASE SHALL EXTEND 300mm BEYOND THE END OF THE APPROACH SLAB AND THE WIDTH SHALL BE THE SAME AS THAT OF THE APPROACH SLAB. THE CONCRETE SHALL BE FINISHED TO A SMOOTH SURFACE AND A LAYER OF 13.6 kg. ROOFING FELT SHALL BE PLACED BETWEEN THE CONCRETE BASE AND THE APPROACH SLAB TO PREVENT BOND. THE APPROACH SLAB SHALL NOT BE CAST UNTIL THE CONCRETE BASE HAS REACHED AN AGE OF THREE CURING DAYS.

THE JOINT SHALL BE SAWS PRIOR TO THE CASTING OF THE BARRIER RAIL.

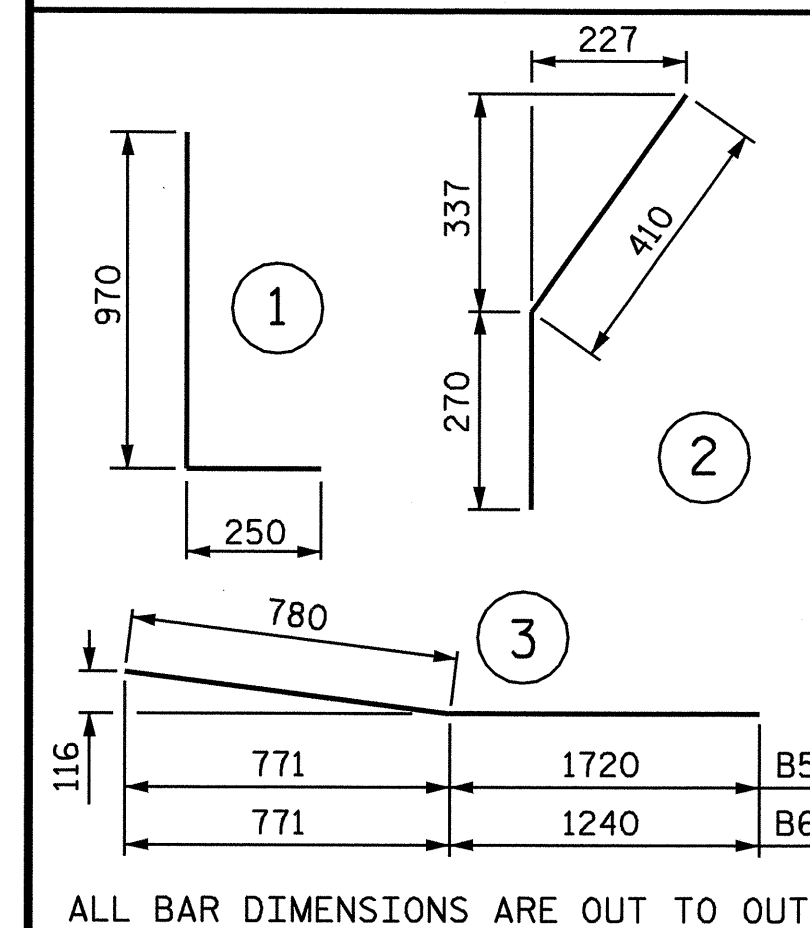
PAYMENT FOR APPROACH SLAB GROOVING IS INCLUDED IN THE "GROOVING BRIDGE FLOORS" PAY ITEM.

FOR EVAZOTE JOINT SEALS, SEE SPECIAL PROVISIONS.

THE NOMINAL UNCOMPRESSED SEAL WIDTH OF THE EVAZOTE JOINT SEAL SHALL BE 71mm.

THE ELASTOMERIC CONCRETE SHALL BE INCLUDED IN THE PAY ITEM FOR "EVAZOTE JOINT SEALS", SEE SPECIAL PROVISION FOR ELASTOMERIC CONCRETE.

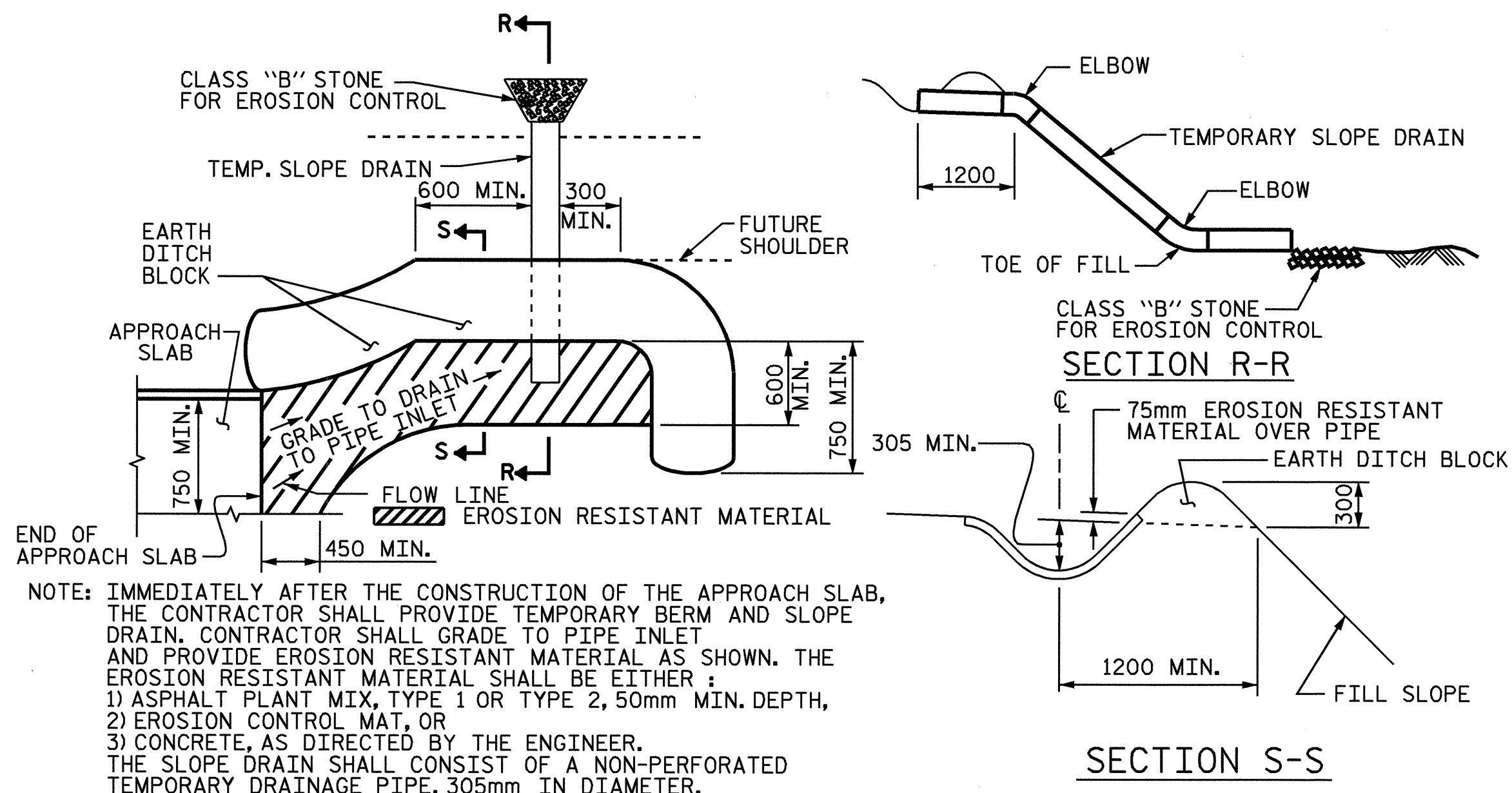
BAR TYPES



ALL BAR DIMENSIONS ARE OUT TO OUT

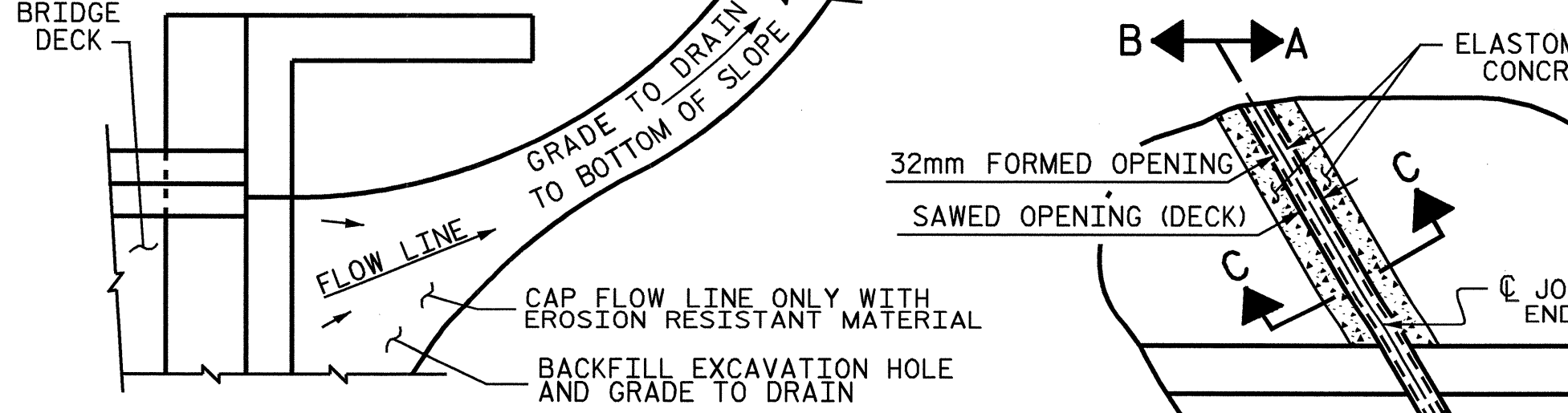
BILL OF MATERIAL FOR ONE APPROACH SLAB (2 REQUIRED)

BAR	NO.	SIZE	TYPE	LENGTH	WEIGHT	BAR	NO.	SIZE	TYPE	LENGTH	WEIGHT	BAR	NO.	SIZE	TYPE	LENGTH	WEIGHT	BAR	NO.	SIZE	TYPE	LENGTH	WEIGHT	
*A101	2	#16	STR.	12220	76	A201	4	#13	STR.	6140	24	*B100	1	#19	STR.	18280	41	B211	2	#25	STR.	15560	124	
*A102	2	#16	STR.	10880	34	A202	4	#13	STR.	5880	23	*B101	2	#19	STR.	18100	81	B212	2	#25	STR.	15300	122	
*A103	2	#16	STR.	10360	32	A203	4	#13	STR.	5620	22	*B102	2	#19	STR.	17840	80	B213	2	#25	STR.	15020	119	
*A104	2	#16	STR.	9840	31	A204	4	#13	STR.	5360	21	*B103	2	#19	STR.	17560	78	B214	2	#25	STR.	14740	117	
*A105	2	#16	STR.	9320	29	A205	4	#13	STR.	5100	20	*B104	2	#19	STR.	17300	77	B215	2	#25	STR.	14480	115	
*A106	2	#16	STR.	8800	27	A206	2	#13	STR.	9100	18	*B105	2	#19	STR.	17020	76	B216	2	#25	STR.	14200	113	
*A107	2	#16	STR.	8280	26	A207	2	#13	STR.	8580	17	*B106	2	#19	STR.	16760	75	B217	2	#25	STR.	13940	111	
*A108	2	#16	STR.	7760	24	A208	2	#13	STR.	8060	16	*B107	2	#19	STR.	16480	74	B218	2	#25	STR.	13660	109	
*A109	2	#16	STR.	7240	22	A209	2	#13	STR.	7540	15	*B108	2	#19	STR.	16200	72	B219	2	#25	STR.	13380	106	
*A110	2	#16	STR.	6740	21	A210	2	#13	STR.	7040	14	*B109	2	#19	STR.	15940	71	B220	2	#25	STR.	13120	104	
*A111	2	#16	STR.	6140	19	A211	2	#13	STR.	6520	13	*B110	2	#19	STR.	15660	70	B221	2	#25	STR.	12840	102	
*A112	2	#16	STR.	5620	17	A212	2	#13	STR.	5920	12	*B111	2	#19	STR.	15400	69	B222	2	#25	STR.	12580	100	
*A113	2	#16	STR.	5100	16	A213	2	#13	STR.	5400	11	*B112	2	#19	STR.	15120	68	B223	2	#25	STR.	12300	98	
*A114	2	#16	STR.	4580	14	A214	2	#13	STR.	4880	10	*B113	2	#19	STR.	14840	66	B224	2	#25	STR.	12020	96	
*A115	2	#16	STR.	4080	13	A215	2	#13	STR.	4360	9	*B114	2	#19	STR.	14580	65	B225	2	#25	STR.	11760	93	
*A116	2	#16	STR.	3560	11	A216	2	#13	STR.	3840	8	*B115	2	#19	STR.	14300	64	B226	2	#25	STR.	11480	91	
*A117	2	#16	STR.	3040	9	A217	2	#13	STR.	3320	7	*B116	2	#19	STR.	14040	63	B227	2	#25	STR.	11220	89	
*A118	2	#16	STR.	2520	8	A218	2	#13	STR.	2820	6	*B117	2	#19	STR.	13760	62	B228	2	#25	STR.	10940	87	
*A119	2	#16	STR.	2000	6	A219	2	#13	STR.	2300	5	*B118	2	#19	STR.	13480	60	B229	2	#25	STR.	10660	85	
*A120	2	#16	STR.	1480	5	A220	2	#13	STR.	1780	4	*B119	2	#19	STR.	13220	59	B230	2	#25	STR.	10400	83	
*A121	2	#16	STR.	960	3	A221	2	#13	STR.	1260	3	*B120	2	#19	STR.	12940	58	B231	2	#25	STR.	10120	80	
						A222	2	#13	STR.	740	1	*B121	2	#19	STR.	12680	57	B232	2	#25	STR.	9860	78	
*A125	4	#16	STR.	11840	74							*B122	2	#19	STR.	12400	55	B233	2	#25	STR.	9580	76	
*A126	4	#16	STR.	11440	71	A225	8	#13	STR.	6200	49	*B123	2	#19	STR.	12120	54	B234	2	#25	STR.	9300	74	
*A127	4	#16	STR.	11040	69	A226	8	#13	STR.	6000	48	*B124	2	#19	STR.	11860	53	B235	2	#25	STR.	9040	72	
*A128	4	#16	STR.	10620	66	A227	8	#13	STR.	5800	46	*B125	2	#19	STR.	11580	52	B236	2	#25	STR.	8760	70	
*A129	4	#16	STR.	10220	63	A228	8	#13	STR.	5600	45	*B126	2	#19	STR.	11320	51	B237	2	#25	STR.	8500	68	
*A130	4	#16	STR.	9820	61	A229	8	#13	STR.	5400	43	*B127	2	#19	STR.	11040	49	B238	2	#25	STR.	8220	65	
*A131	4	#16	STR.	9420	58	A230	8	#13	STR.	5200	41	*B128	2	#19	STR.	10760	48	B239	2	#25	STR.	8000	64	
*A132	4	#16	STR.	9020	56	A231	8	#13	STR.	5000	40	*B129	2	#19	STR.	10500	47	B240	2	#25	STR.	7680	61	
*A133	4	#16	STR.	8600	53	A232	4	#13	STR.	9020	36	*B130	2	#19	STR.	10220	46							
*A134	4	#16	STR.	8200	51	A233	4	#13	STR.	8600	34	*B131	2	#19	STR.	9960	45	*B3	7	#16	STR.	3660	40	
*A135	4	#16	STR.	7800	48	A234	4	#13	STR.	8200	33	*B132	2	#19	STR.	9680	43	*B4	7	#16	STR.	3940	43	
*A136	4	#16	STR.	7400	46	A235	4	#13	STR.	7800	31	*B133	2	#19	STR.	9400	42	*B5	1	#16	3	2500	4	
*A137	4	#16	STR.	7000	43	A236	4	#13	STR.	7400	29	*B134	2	#19	STR.	9140	41	*B6	1	#16	3	2020	3	
*A138	4	#16	STR.	6580	41	A237	4	#13	STR.	7000	28	*B135	2	#19	STR.	8860	40							
*A139	4	#16	STR.	6180	38	A238	4	#13	STR.	6580	26	*B136	2	#19	STR.	8600	38	*G1	1	#16	STR.	14040	22	
*A140	4	#16	STR.	5780	36	A239	4	#13	STR.	6180	25	*B137	2	#19	STR.	8320	37	*G2	2	#16	STR.	11380	35	
*A141	4	#16	STR.	5380	33	A240	4	#13	STR.	5780	23	*B138	2	#19	STR.	8040	36							
*A142	4	#16	STR.	4960	31	A241	4	#13	STR.	5380	21	*B139	2	#19	STR.	7780	35	*S1	58	#16	STR.	980	88	
*A143	4	#16	STR.	4560	28	A242	4	#13	STR.	4960	20	*B140	2	#19	STR.	7500	34	*S2	42	#16	1	1220	80	
*A144	4	#16	STR.	4160	26	A243	4	#13	STR.	4560	18							*S3	20	#16	2	680	21	
*A145	4	#16	STR.	3760	23	A244	4	#13	STR.	4160	17	B200	1	#25	STR.	18280	73							
*A146	4	#16	STR.	3340	21	A245	4	#13	STR.	3760	15	B201	2	#25	STR.	18280	145							
*A147	4	#16	STR.	2940	18	A246	4	#13	STR.	3340	13	B202	2	#25	STR.	18020	143							
*A148	4	#16	STR.	2600	16	A247	4	#13	STR.	2940	12	B203	2	#25	STR.	17740	141							
*A149	4	#16	STR.	2200	14	A248	4	#13	STR.	2600	10	B204	2	#25	STR.	17460	139							
*A150	4	#16	STR.	1800	11	A249	4	#13	STR.	2200	9	B205	2	#25	STR.	17200	137							
*A151	4	#16	STR.	1380	9	A250	4	#13	STR.	1800	7	B206	2	#25	STR.	16920	134							
*A152	4	#16	STR.	980	6	A251	4	#13	STR.	1400	6	B207	2	#25	STR.	16640	132							
*A153	4	#16	STR.	580	4	A252	4	#13	STR.	980	4	B208	2	#25	STR.	16380	130							
						A253	4	#13	STR.	580	2	B209	2	#25	STR.	16100	128							
												B210	2	#25	STR.	15840	126							



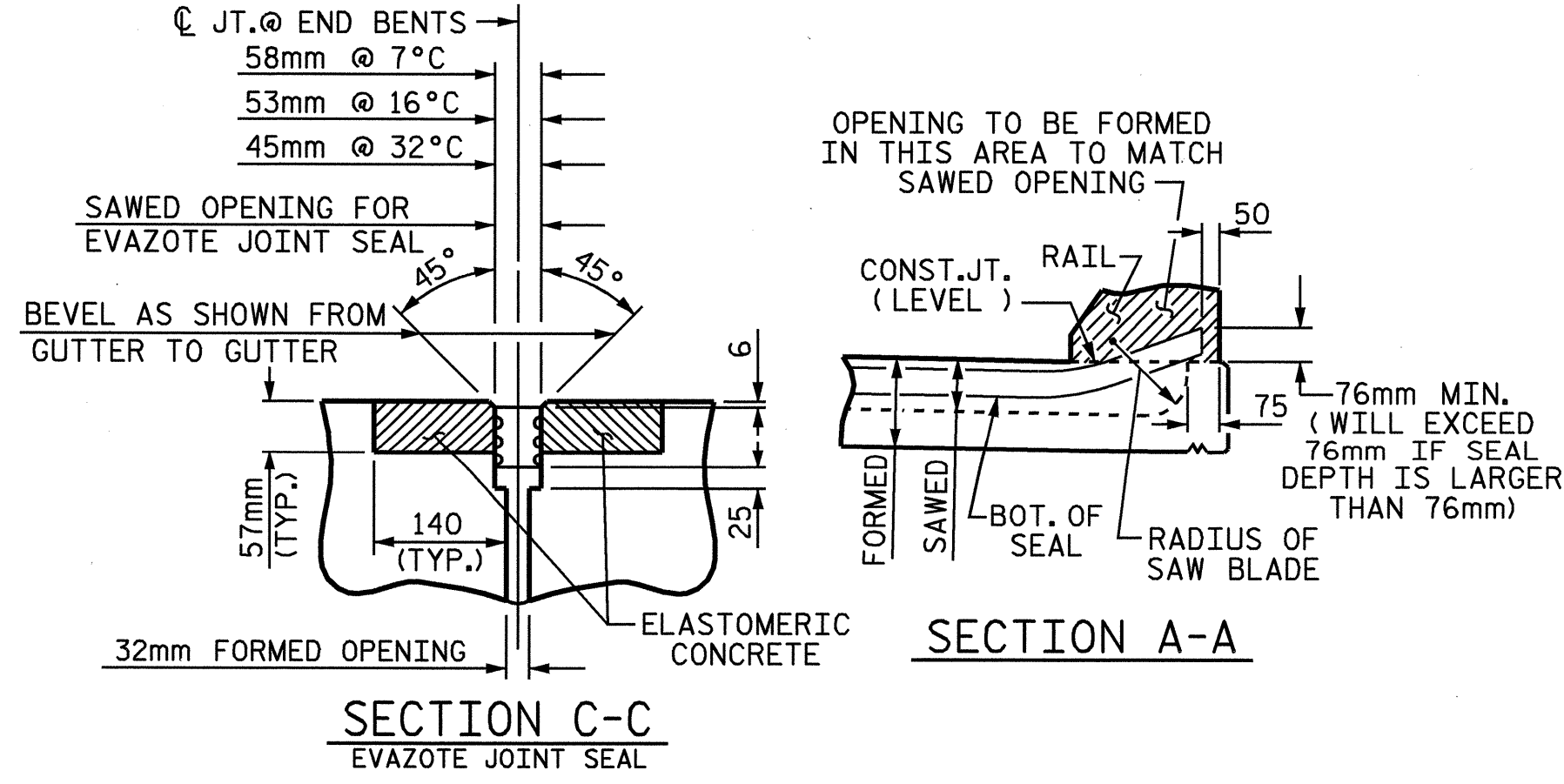
TEMPORARY BERM AND SLOPE DRAIN DETAILS

(TO BE USED WHEN SHOULDER BERM GUTTER IS REQUIRED)



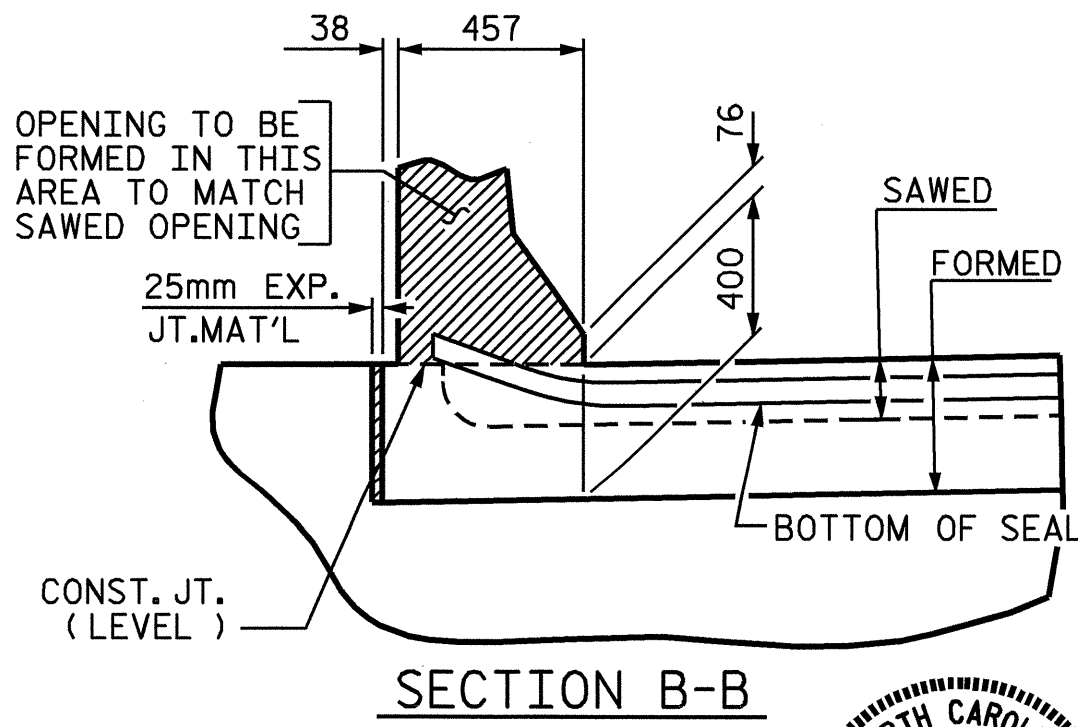
NOTE: IF THE APPROACH SLAB IS NOT CONSTRUCTED IMMEDIATELY AFTER THE BACKFILLING OF THE END BENT EXCAVATION, GRADE TO DRAIN TO THE BOTTOM OF THE SLOPE AND PROVIDE EROSION RESISTANT MATERIAL, SUCH AS FIBERGLASS ROVING OR AS DIRECTED BY THE ENGINEER TO PREVENT SOIL EROSION AND TO PROTECT THE AREA ADJACENT TO THE STRUCTURE. THE CONTRACTOR WILL BE REQUIRED TO REMOVE THESE MATERIALS PRIOR TO CONSTRUCTION OF THE APPROACH SLAB.

TEMPORARY DRAINAGE DETAIL



JOINT SEAL DETAILS @ END BENT

(FOR BARRIER RAIL)



SECTION B-B

PROJECT NO. **R-2206B**
 LINCOLN COUNTY
 STATION **123+38.105 -L-**

SHEET 3 OF 3

STATE OF NORTH CAROLINA
 DEPARTMENT OF TRANSPORTATION
 RALEIGH
BRIDGE APPROACH SLAB FOR FLEXIBLE PAVEMENT WITH BARRIER RAIL (LEFT LANE)

NORTH CAROLINA PROFESSIONAL SEAL 20211
 ENGINEER
 THOMAS G. PAINE
 8/24/04

REVISIONS				SHEET NO.	
NO.	BY:	DATE:	NO.	BY:	DATE:
1			3		
2			4		

DRAWN BY: Keith D. Layne DATE: 4-28-04
 CHECKED BY: A. CHAN DATE: 5-7-04

24-AUG-2004 11