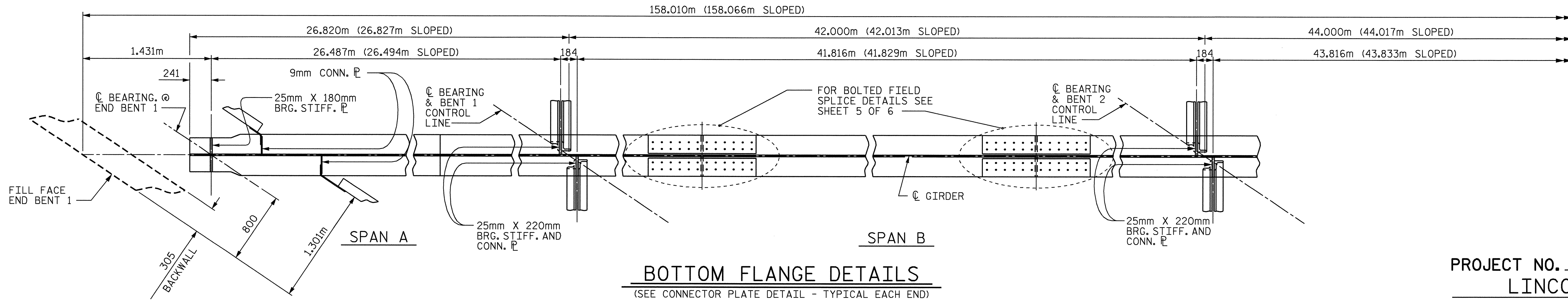


GIRDER ELEVATION

(1632 SHEAR STUDS PER GIRDER)
(SEE "BOLTED FIELD SPLICE DETAILS" FOR ADDITIONAL STUDS)

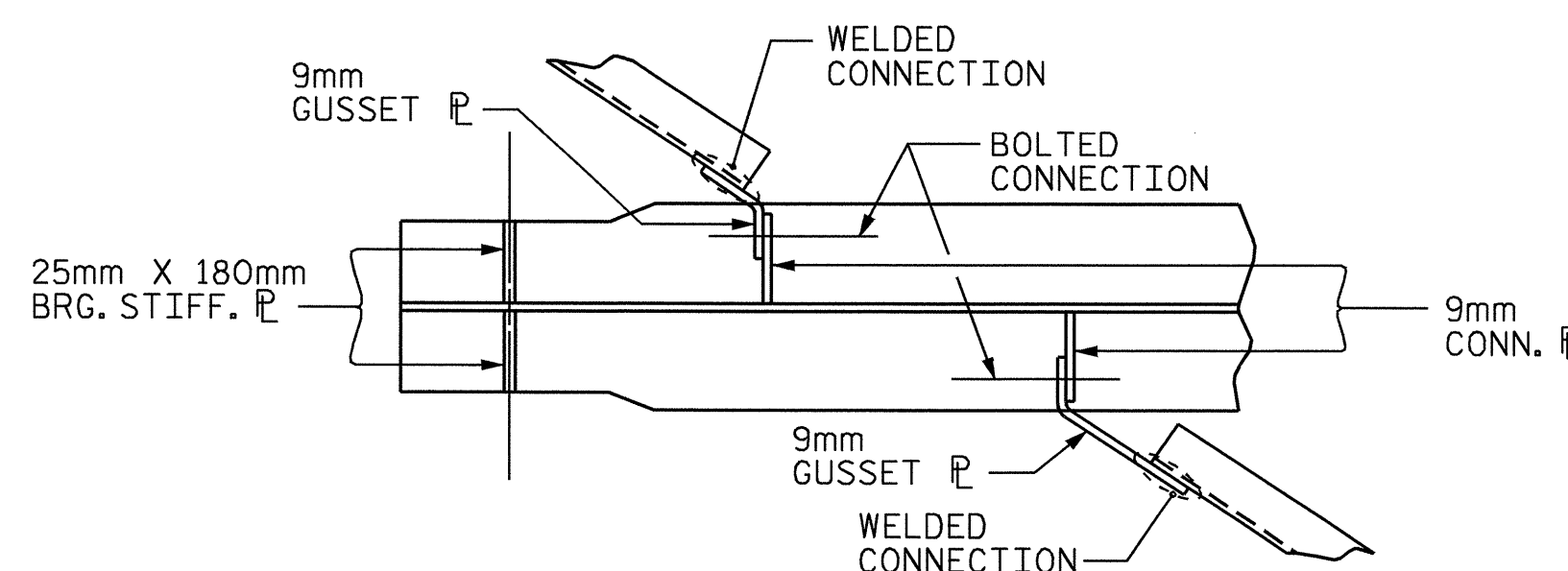
NOTES

- ① CHARPY V-NOTCH TESTS ARE REQUIRED FOR ALL TOP OR BOTTOM FLANGE PLATES WHICH FALL WITHIN THESE LIMITS, ALL WEB PLATES, AND ALL SPLICE PLATES. IF A PERMITTED SHOP FLANGE SPLICE IS NOT USED, CHARPY V-NOTCH TESTS WILL BE REQUIRED FOR THE ENTIRE FLANGE PLATE. FOR CHARPY V-NOTCH TESTS, SEE ARTICLE 1072-9 OF THE STANDARD SPECIFICATIONS.
- ② NO WELDING OF FORMS OR FALSEWORK TO THE TOP PLATE WILL BE ALLOWED IN THIS AREA.



BOTTOM FLANGE DETAILS

(SEE CONNECTOR PLATE DETAIL - TYPICAL EACH END)

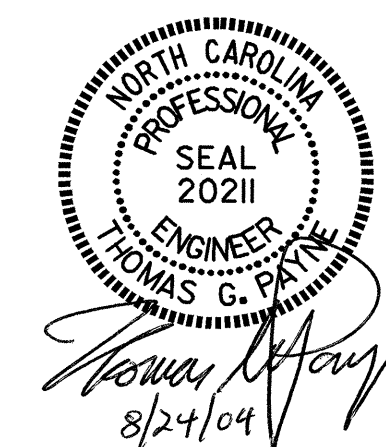


CONNECTOR PLATE DETAIL

(EACH END SIMILAR)

PROJECT NO. R-2206B
LINCOLN COUNTY
STATION: 123+38.105 -L-

SHEET 2 OF 6



STATE OF NORTH CAROLINA
DEPARTMENT OF TRANSPORTATION
RALEIGH

SUPERSTRUCTURE
STRUCTURAL STEEL
DETAILS
(RIGHT LANE)

REVISIONS						SHEET NO.
NO.	BY:	DATE:	NO.	BY:	DATE:	TOTAL SHEETS
1			3			86
2			4			

DRAWN BY: M. J. OSTRISHKO DATE: 4-2-01
CHECKED BY: E. G. ALLEN DATE: 4-20-01

20-AUG-2004 16:18
W:\squad1\2206b\Final Plans\str2\2206b02ss.dgn
klayne

STR. #2