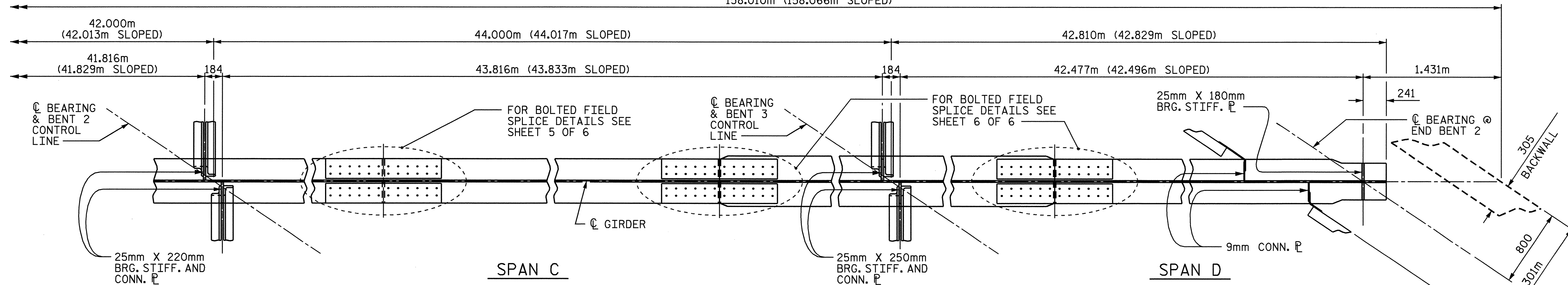


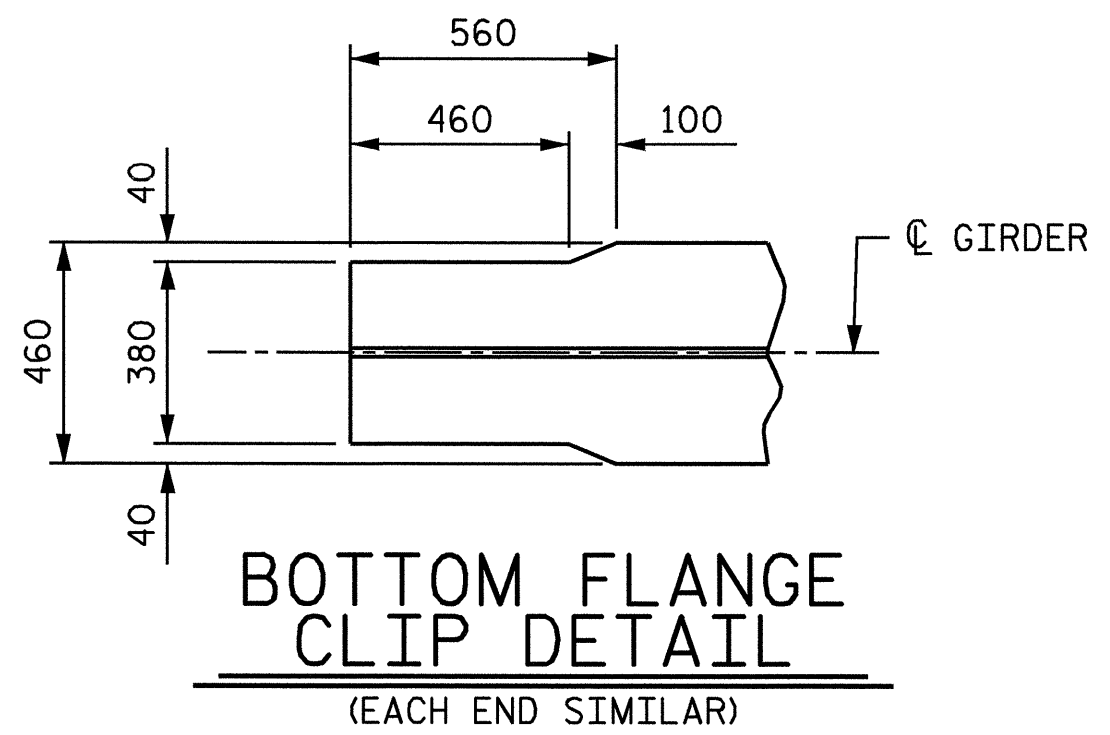
**GIRDER ELEVATION**

(1632 SHEAR STUDS PER GIRDER)  
(SEE "BOLTED FEILD SPLICE DETAILS" FOR ADDITIONAL STUDS)



**BOTTOM FLANGE DETAILS**

(SEE BOTTOM FLANGE CLIP DETAIL - TYPICAL EACH END)



**NOTES**

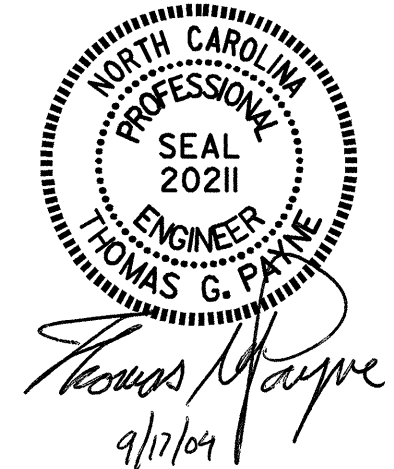
- ① CHARPY V-NOTCH TESTS ARE REQUIRED FOR ALL TOP OR BOTTOM FLANGE PLATES WHICH FALL WITHIN THESE LIMITS, ALL WEB PLATES, AND ALL SPLICE PLATES. IF A PERMITTED SHOP FLANGE SPLICE IS NOT USED, CHARPY V-NOTCH TESTS WILL BE REQUIRED FOR THE ENTIRE FLANGE PLATE. FOR CHARPY V-NOTCH TESTS, SEE ARTICLE 1072-9 OF THE STANDARD SPECIFICATIONS.
- ② NO WELDING OF FORMS OR FALSEWORK TO THE TOP PLATE WILL BE ALLOWED IN THIS AREA.

PROJECT NO. R-2206B  
LINCOLN COUNTY  
 STATION: 123+38.105 -L-

SHEET 3 OF 6

STATE OF NORTH CAROLINA  
 DEPARTMENT OF TRANSPORTATION  
 RALEIGH

— SUPERSTRUCTURE —  
**STRUCTURAL STEEL  
 DETAILS**  
 (RIGHT LANE)



DRAWN BY : M. J. OSTRISHKO DATE : 4-2-01  
 CHECKED BY : E. G. ALLEN DATE : 4-20-01

REVISIONS						SHEET NO.
NO.	BY:	DATE:	NO.	BY:	DATE:	S-57
1			3			TOTAL SHEETS
2			4			86