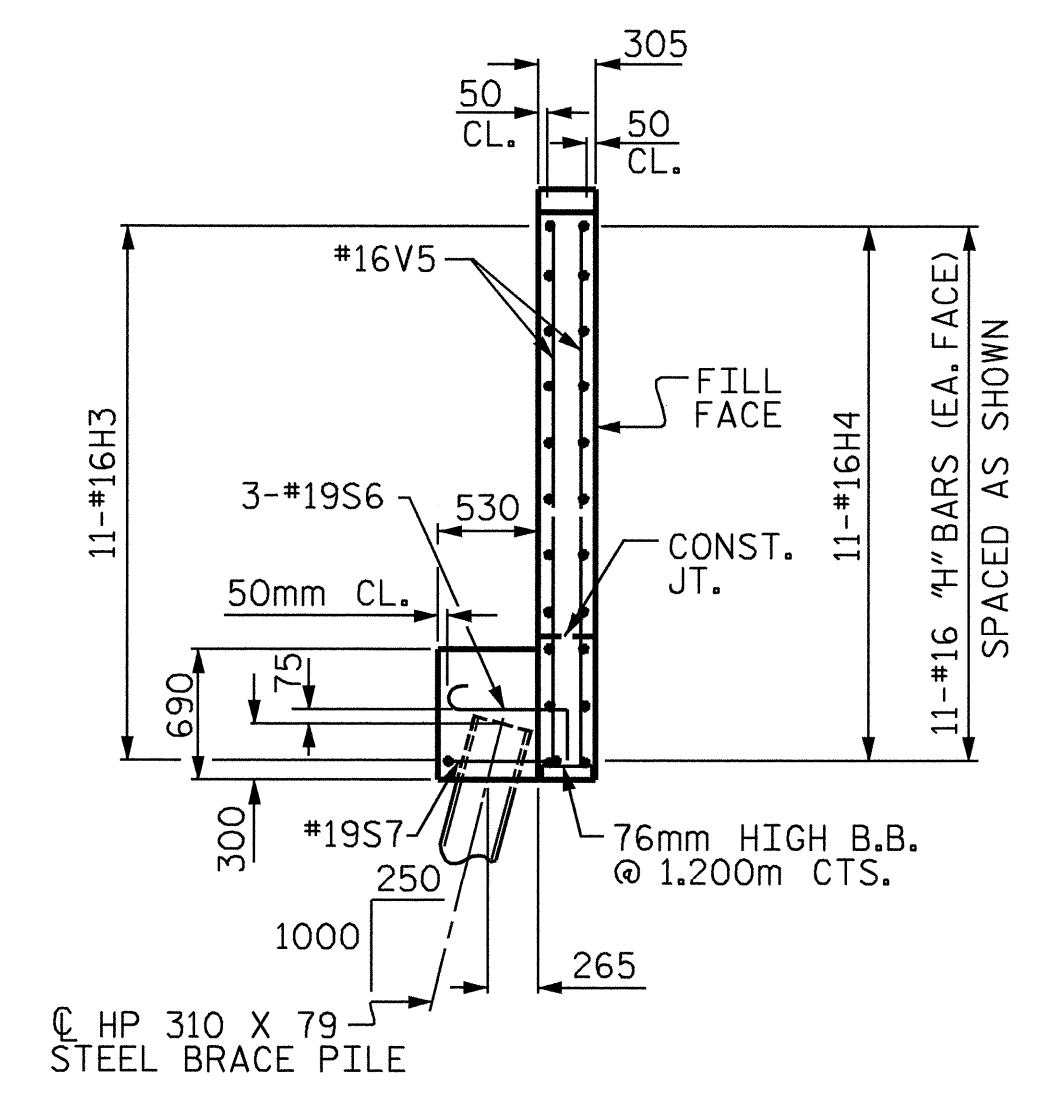
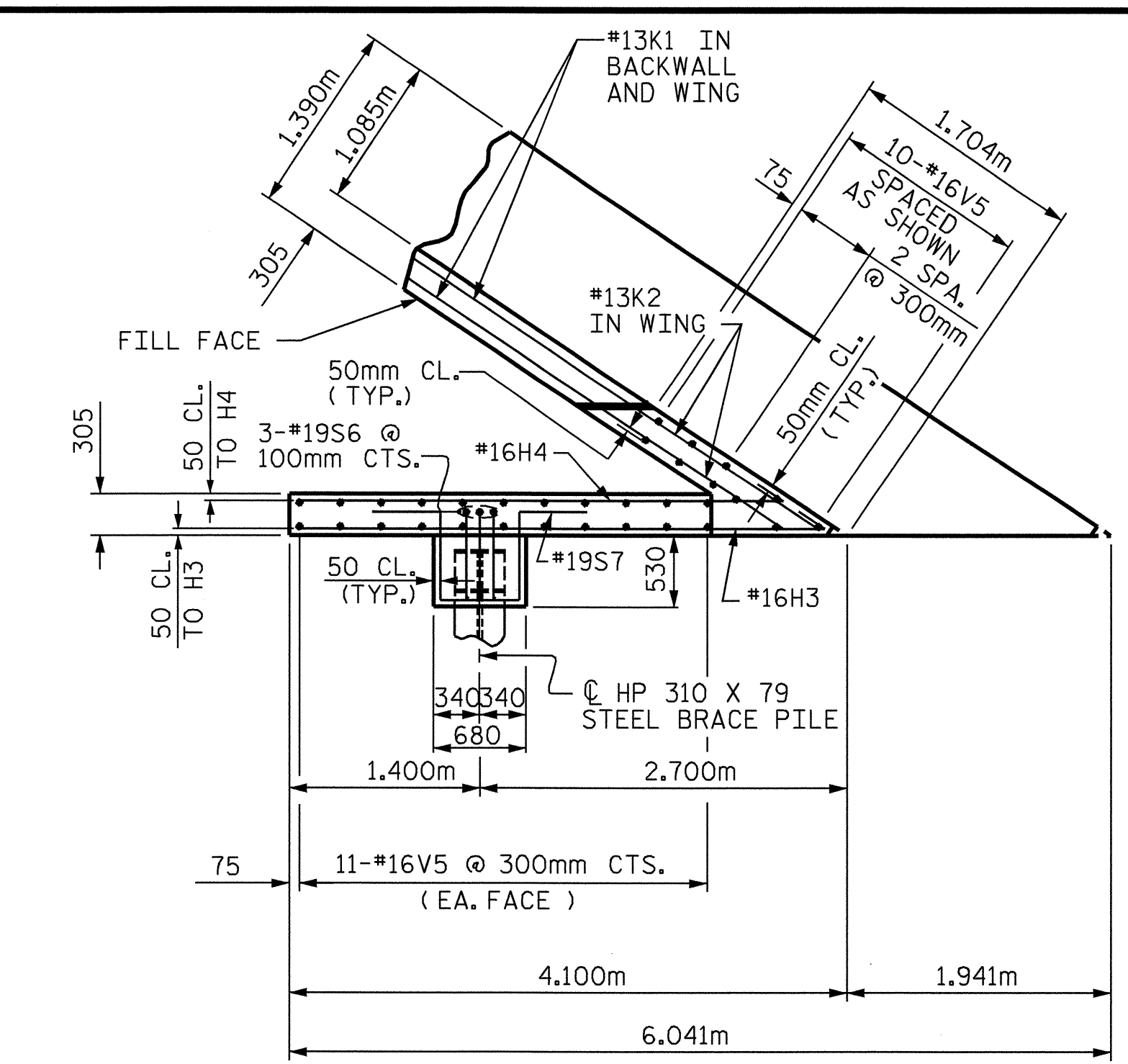


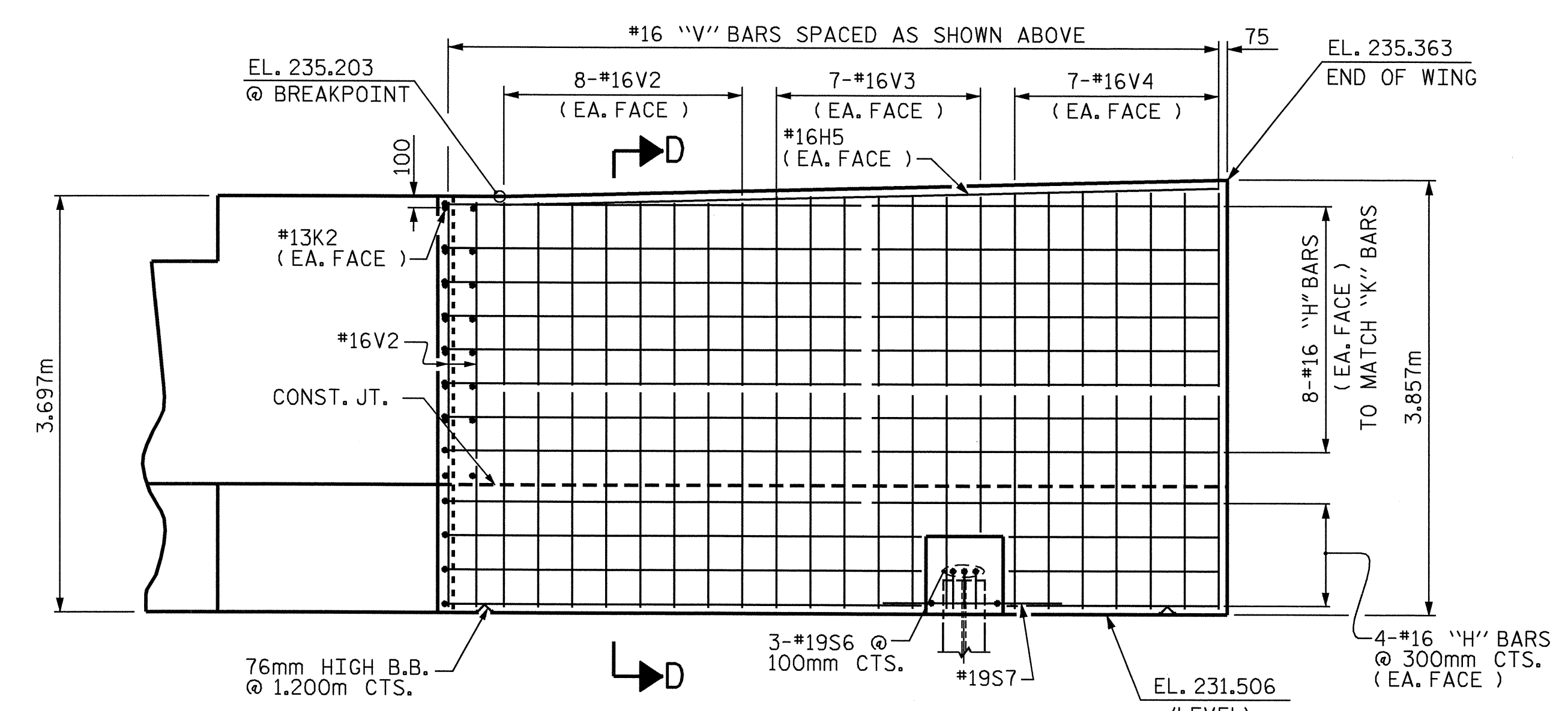
PLAN OF LEFT WING - W1



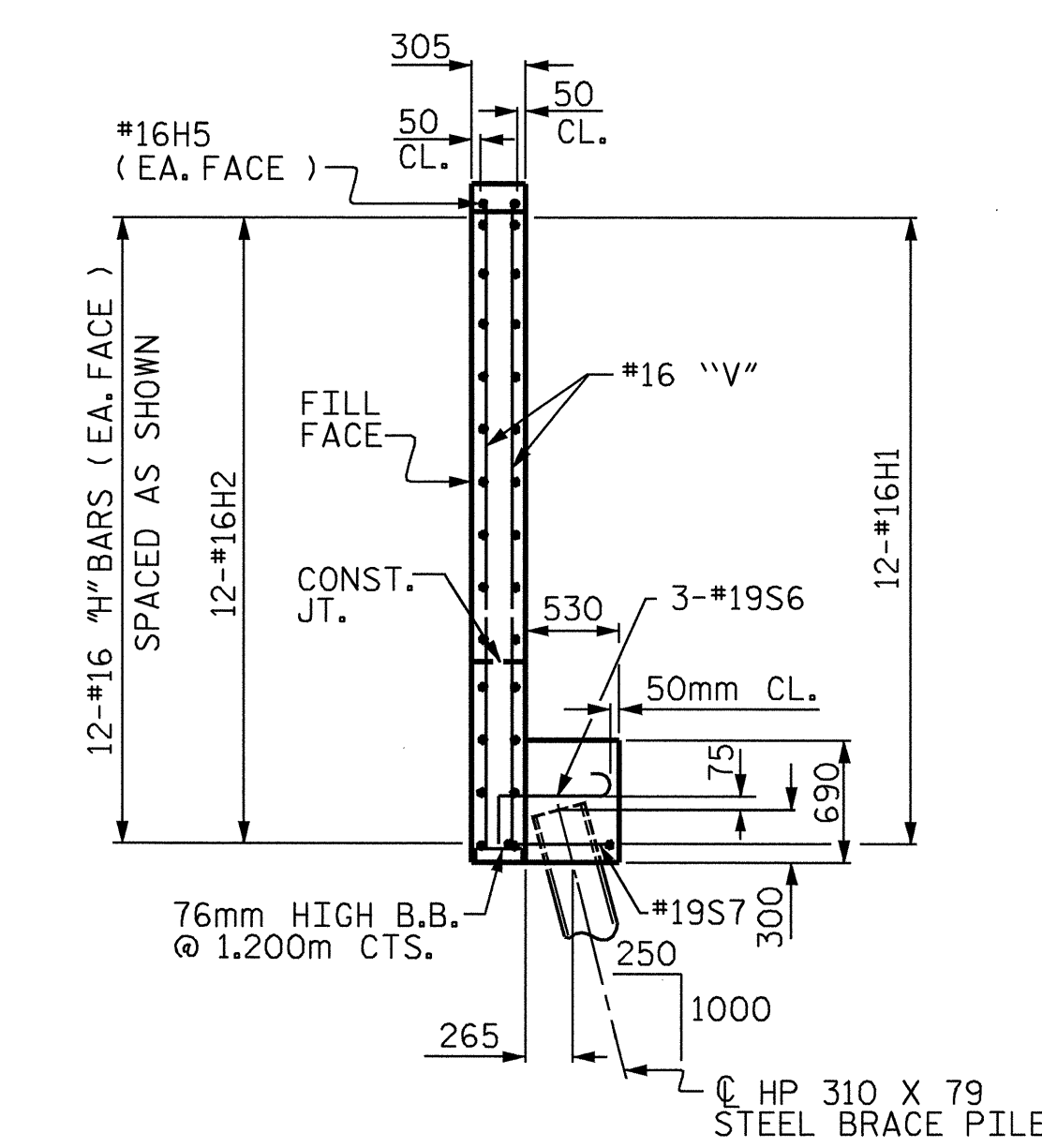
SECTION E-E



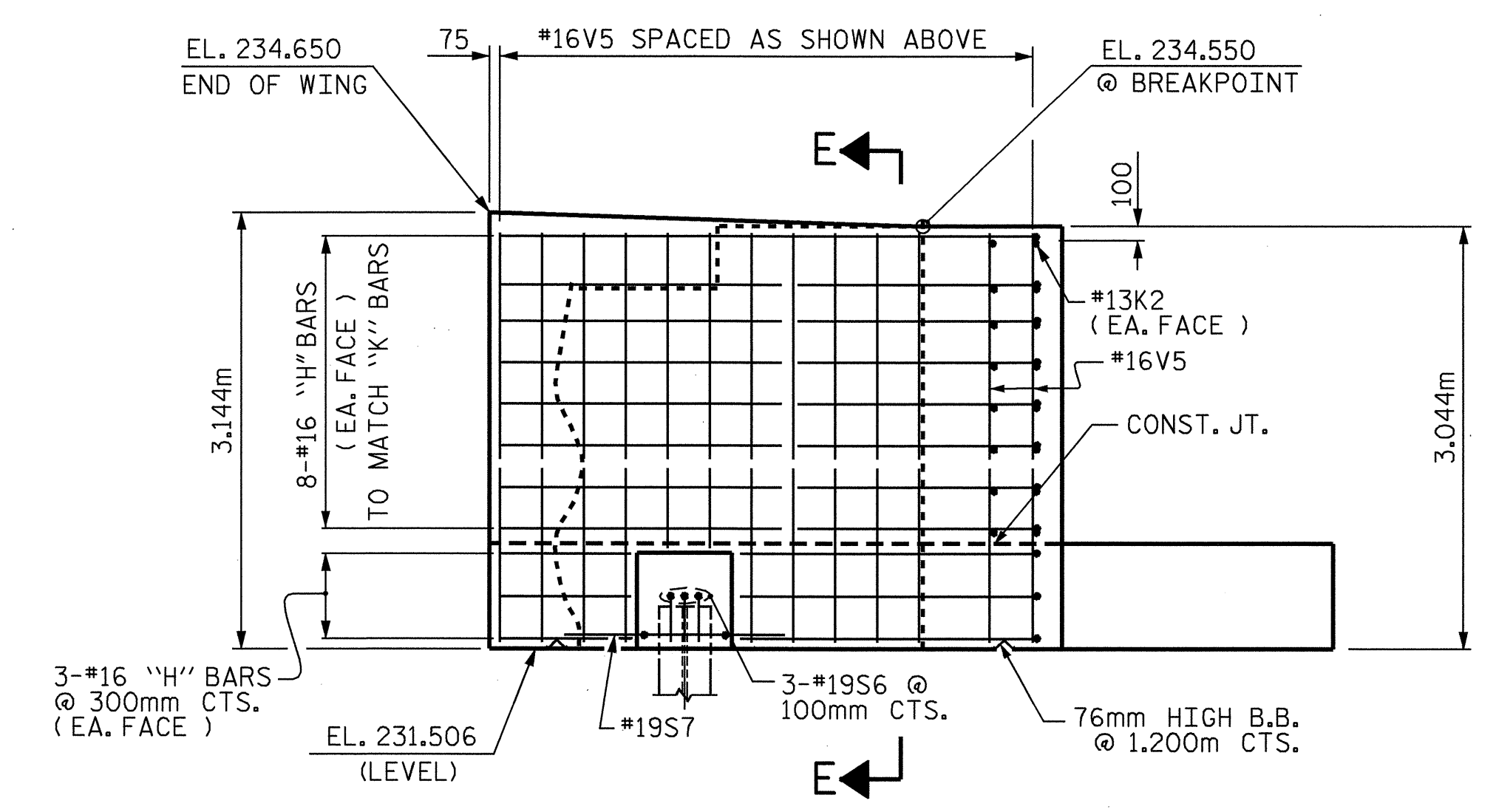
PLAN OF RIGHT WING - W2



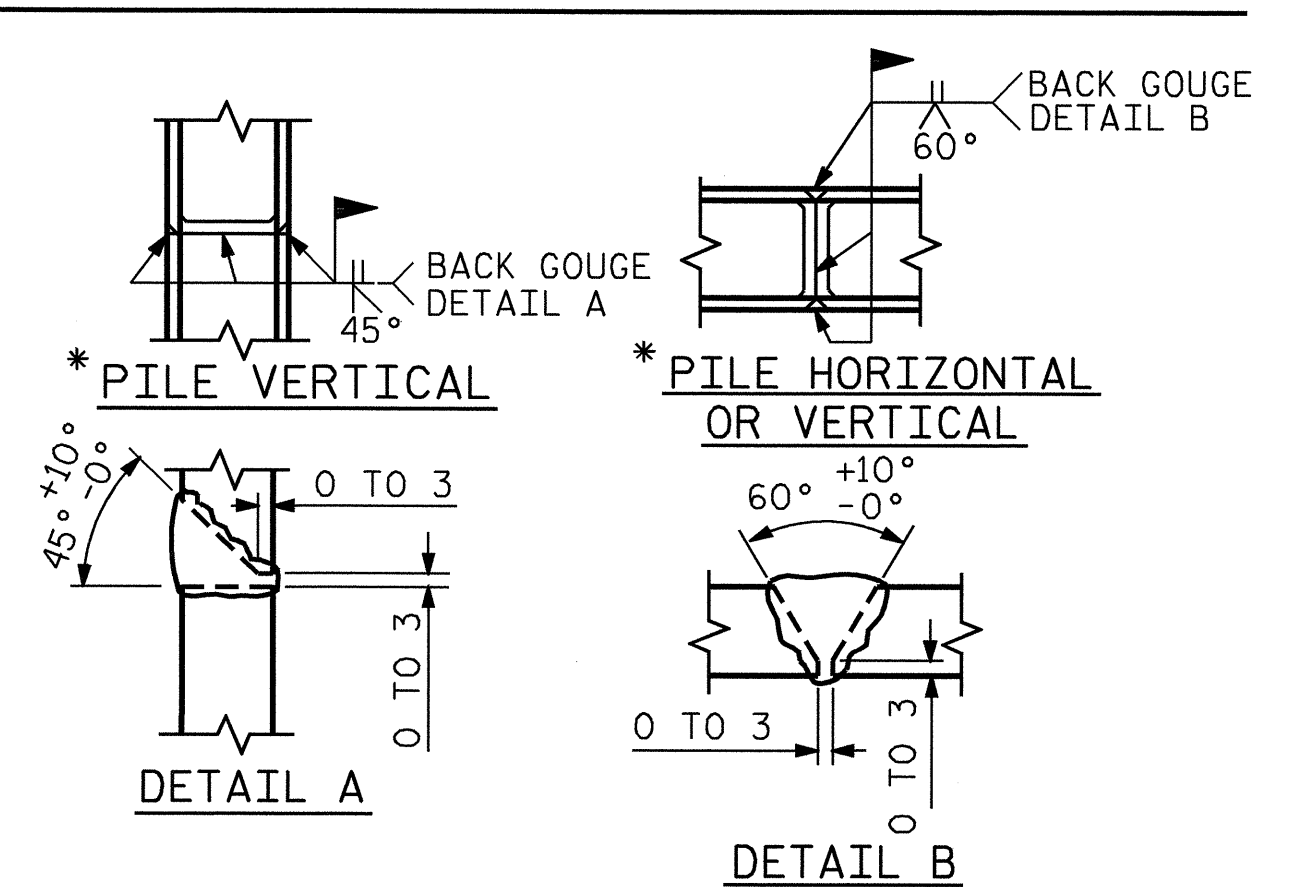
ELEVATION OF LEFT WING - W1



SECTION D-D



ELEVATION OF RIGHT WING - W2



PILE SPLICE DETAILS

NOTES

- STIRRUPS IN CAP MAY BE SHIFTED AS NECESSARY TO CLEAR ANCHOR BOLTS.
- FOR EPOXY PROTECTIVE COATING, SEE SPECIAL PROVISIONS.
- BACKWALL SHALL BE PLACED BEFORE APPLYING THE EPOXY PROTECTIVE COATING.
- THE TOP SURFACE AREAS OF THE END BENT CAPS SHALL BE CURED IN ACCORDANCE WITH THE STANDARD SPECIFICATIONS EXCEPT THAT THE MEMBRANE CURING COMPOUND METHOD SHALL NOT BE USED.
- THE TOP SURFACE OF THE CAP EXCEPT THE BRIDGE SEAT BUILDBUPS SHALL BE SLOPED TRANSVERSELY FROM THE FILL FACE TO THE BACK FACE AT THE RATE OF 2%.
- FOR PILE EXCAVATION, SEE SPECIAL PROVISIONS.
- EPOXY COAT THE END BENT CAP AFTER ADJUSTMENTS ARE MADE TO BEARINGS AND ANCHOR BOLTS ARE GROUTED.

PROJECT NO. R-2206B  
 LINCOLN COUNTY  
 STATION: 123+38.105 -L-

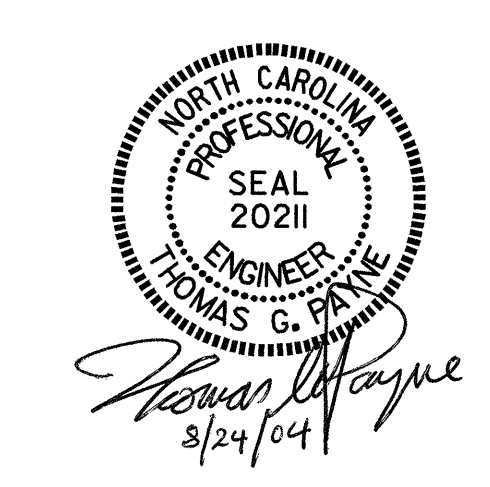
SHEET 2 OF 3

STATE OF NORTH CAROLINA  
 DEPARTMENT OF TRANSPORTATION  
 RALEIGH

SUBSTRUCTURE  
 END BENT 1  
 (RIGHT LANE)

REVISIONS					
NO.	BY	DATE	NO.	BY	DATE
1			3		
2			4		

SHEET NO. S-71  
 TOTAL SHEETS 86



DRAWN BY: E. G. ALLEN DATE: 3-14-01  
 CHECKED BY: H. A. LOCKLEAR DATE: 3-26-01