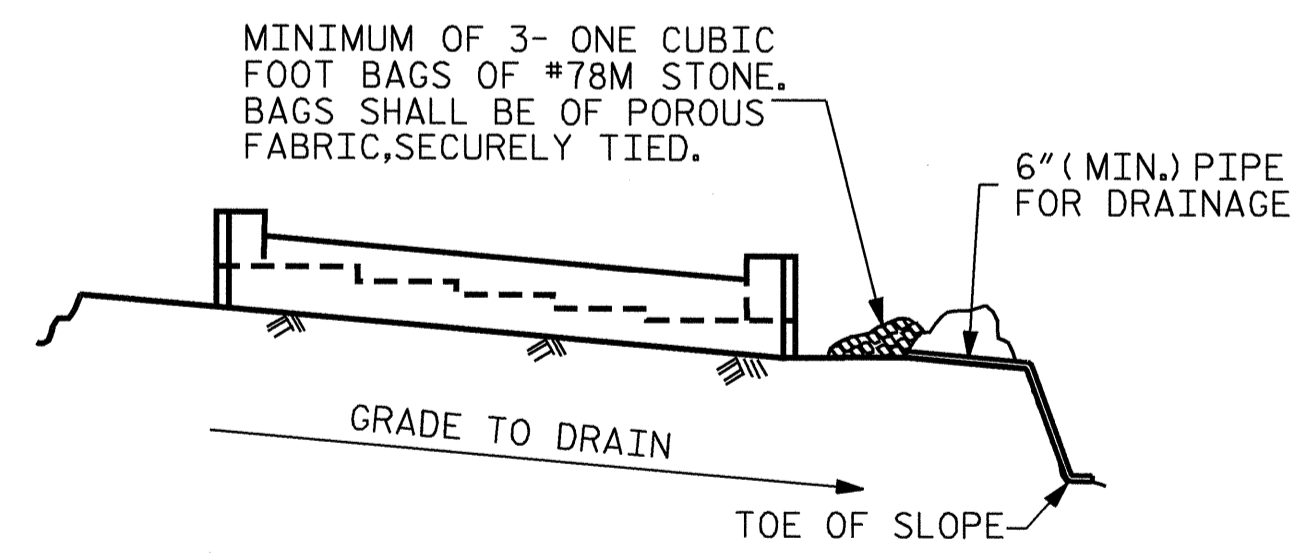


**SECTION A-A**



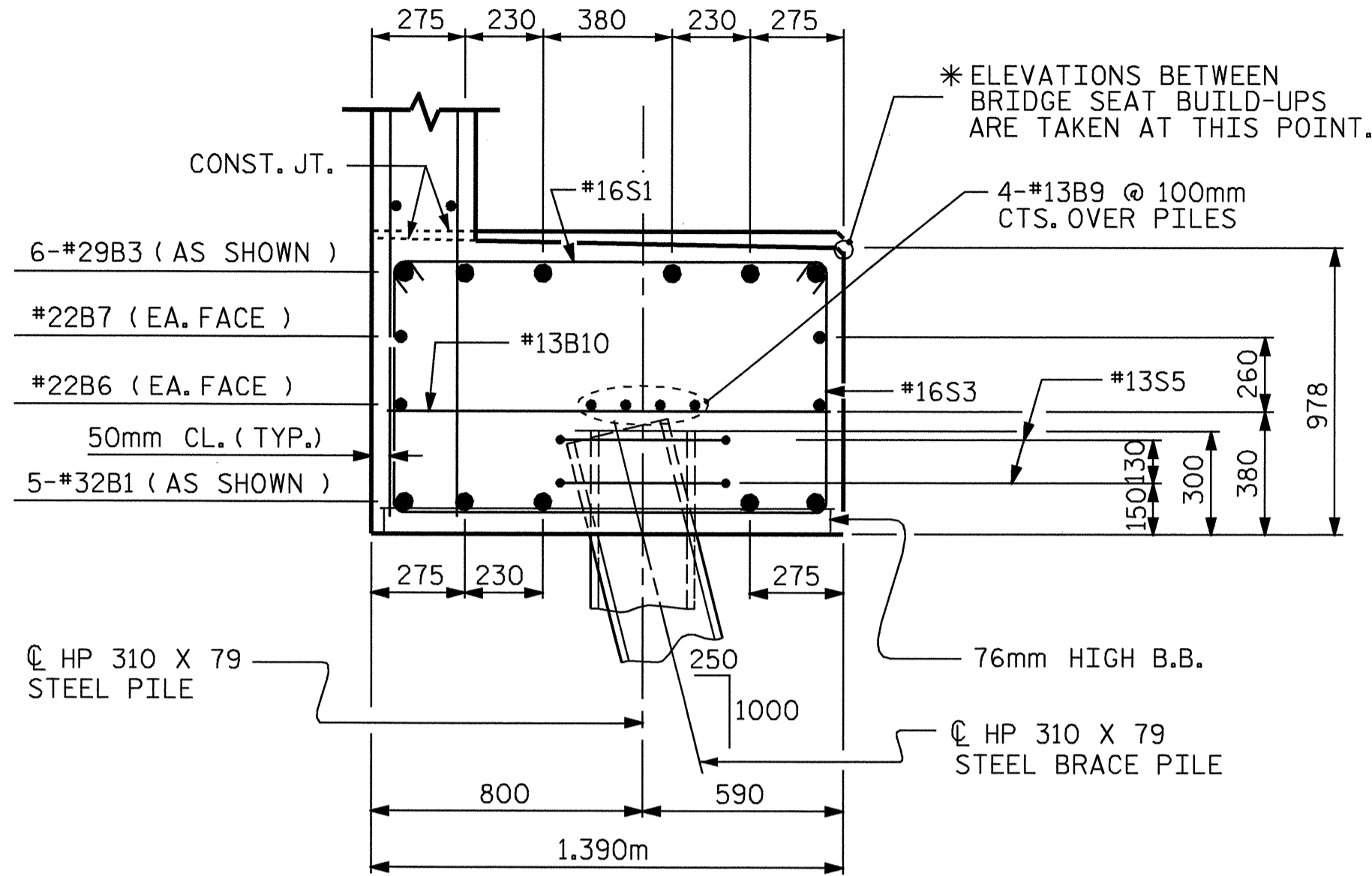
MINIMUM OF 3- ONE CUBIC FOOT BAGS OF #78M STONE. BAGS SHALL BE OF POROUS FABRIC, SECURELY TIED.

BAGGED STONE AND PIPE SHALL BE PLACED IMMEDIATELY AFTER COMPLETION OF END BENT EXCAVATION. PIPE MAY BE EITHER CONCRETE, CORRUGATED STEEL, CORRUGATED ALUMINUM ALLOY, OR CORRUGATED PLASTIC. PERFORATED PIPE WILL NOT BE ALLOWED.

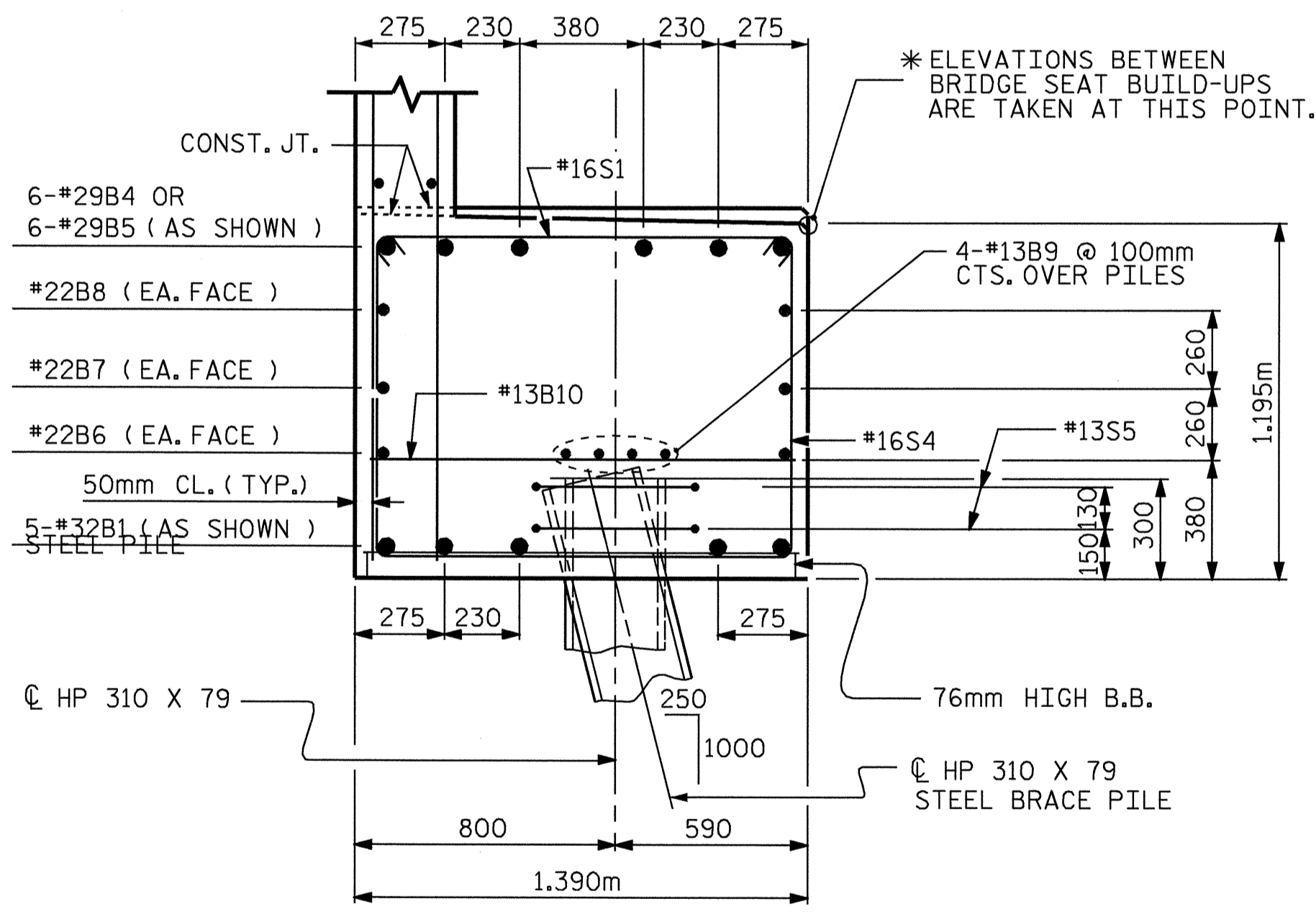
BAGGED STONE SHALL REMAIN IN PLACE UNTIL THE ENGINEER DIRECTS THAT IT BE REMOVED. THE CONTRACTOR SHALL REMOVE AND DISPOSE OF SILT ACCUMULATIONS AT BAGGED STONE WHEN SO DIRECTED BY THE ENGINEER. BAGS SHALL BE REMOVED AND REPLACED WHENEVER THE ENGINEER DETERMINES THAT THEY HAVE DETERIORATED AND LOST THEIR EFFECTIVENESS.

NO SEPARATE PAYMENT WILL BE MADE FOR THIS WORK AND THE ENTIRE COST OF THIS WORK SHALL BE INCLUDED IN THE UNIT CONTRACT PRICE BID FOR THE SEVERAL PAY ITEMS.

**TEMPORARY DRAINAGE AT END BENT**

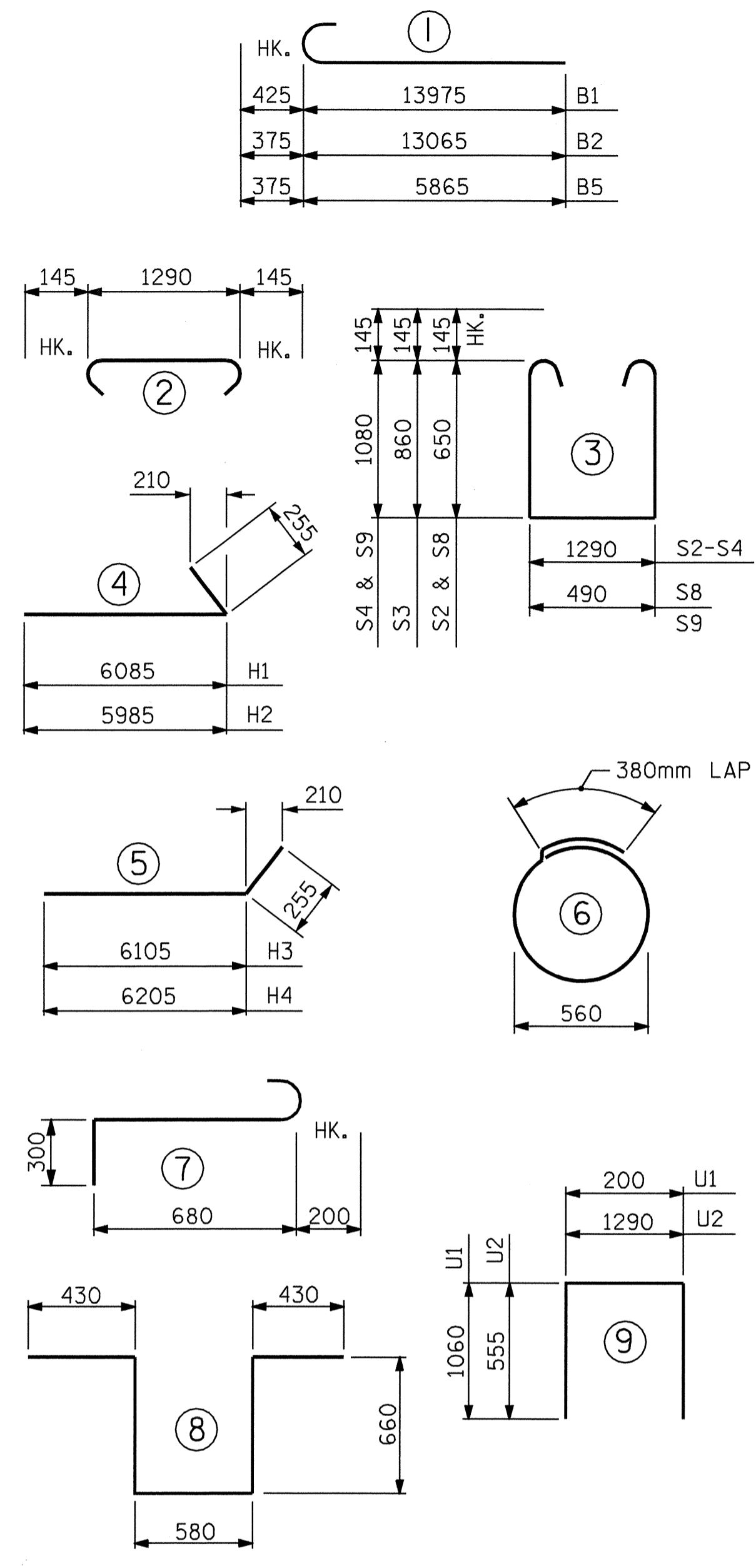


**SECTION B-B**



**SECTION C-C**

**BAR TYPES**



ALL BAR DIMENSIONS ARE OUT TO OUT.

**BILL OF MATERIAL**

**END BENT 2**

BAR NO.	SIZE	TYPE	LENGTH	WEIGHT	
B1	10	32	1	14400	922
B2	6	29	1	13440	408
B3	6	29	STR	8700	264
B4	6	29	STR	7680	233
B5	6	29	1	6240	189
B6	4	22	STR	13580	165
B7	2	22	STR	14120	86
B8	2	22	STR	9880	60
B9	16	13	STR	6960	111
B10	20	13	STR	1280	25
B11	6	13	STR	1100	7
H1	13	16	4	6340	128
H2	13	16	4	6240	126
H3	12	16	5	6360	118
H4	12	16	5	6460	120
K1	56	13	STR	6960	387
K2	8	13	STR	960	8
S1	160	16	2	1580	392
S2	56	16	3	2880	250
S3	40	16	3	3300	205
S4	64	16	3	3740	371
S5	22	13	6	2140	47
S6	6	19	7	1180	16
S7	2	19	8	2760	12
S8	3	16	3	2080	10
S9	3	16	3	2940	14
U1	69	13	9	2320	159
U2	4	13	9	2400	10
V1	146	16	STR	2500	566
V2	14	16	STR	3820	83
V3	16	16	STR	3720	92
V4	18	16	STR	3620	101
V5	14	16	STR	3060	66
V6	18	16	STR	2960	83
V7	18	16	STR	2880	80

REINFORCING STEEL kg 5914

**CLASS A CONCRETE BREAKDOWN:**

POUR #1 (CAP & PART WINGS) = 39.1 CU. METERS

POUR #2 (BACKWALL & PART WINGS) = 25.0 CU. METERS

CLASS A CONCRETE TOTAL = 64.1 CU. METERS

HP 310 X 79 STEEL PILES  
NO. = 13 LIN. METERS = 176

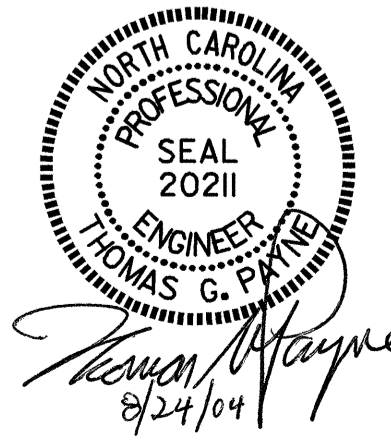
STEEL PILE POINTS EACH 13

PROJECT NO. R-2206B  
LINCOLN COUNTY  
STATION: 123+38.105 -L-

SHEET 3 OF 3

STATE OF NORTH CAROLINA  
DEPARTMENT OF TRANSPORTATION  
RALEIGH

**SUBSTRUCTURE  
END BENT 2  
(RIGHT LANE)**



REVISIONS						SHEET NO.
NO.	BY:	DATE:	NO.	BY:	DATE:	S-81
1			3			TOTAL SHEETS
2			4			86

DRAWN BY: E. G. ALLEN DATE: 3-21-01  
CHECKED BY: H. L. LOCKLEAR DATE: 3-26-01