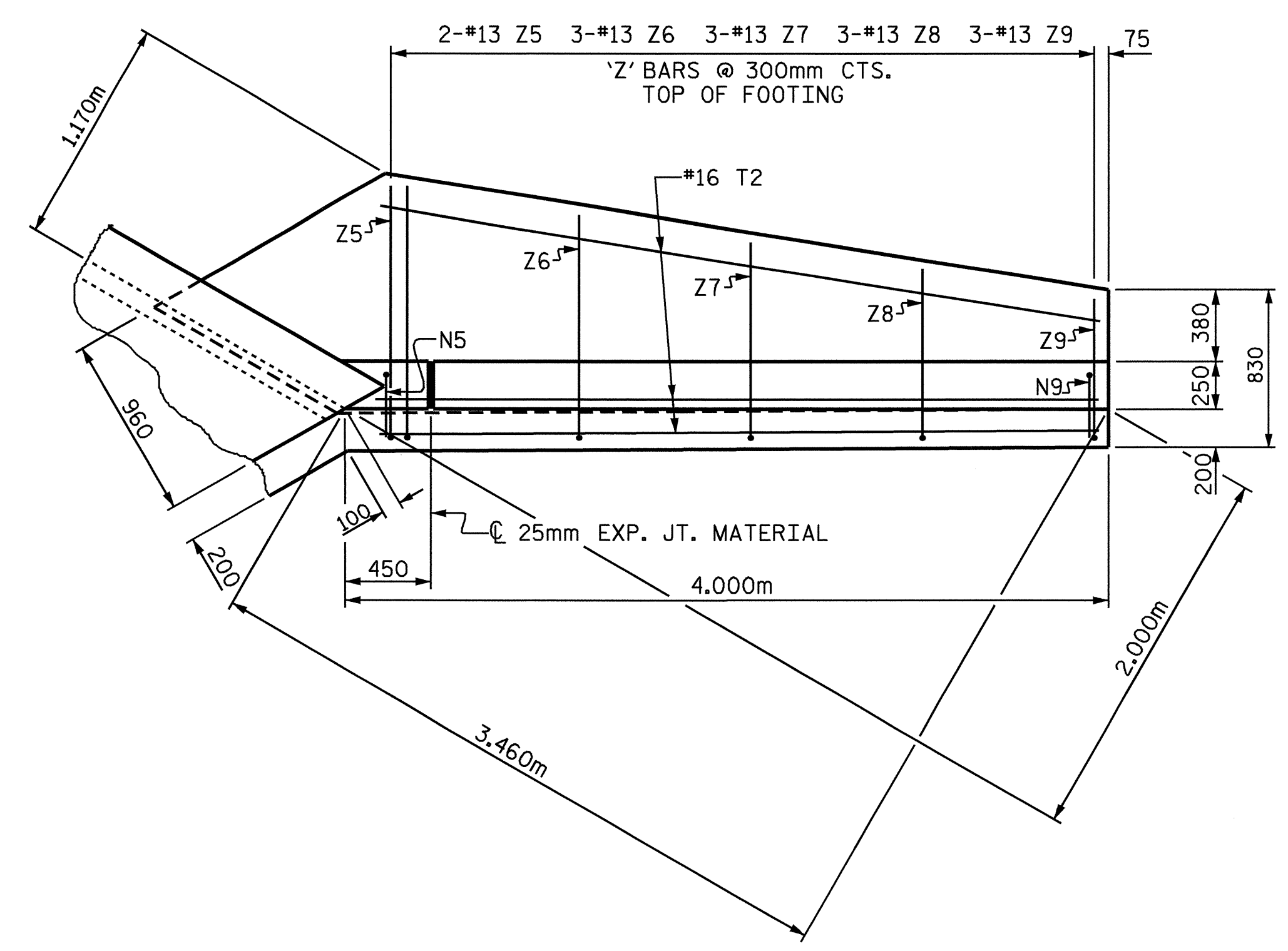


PLAN W2



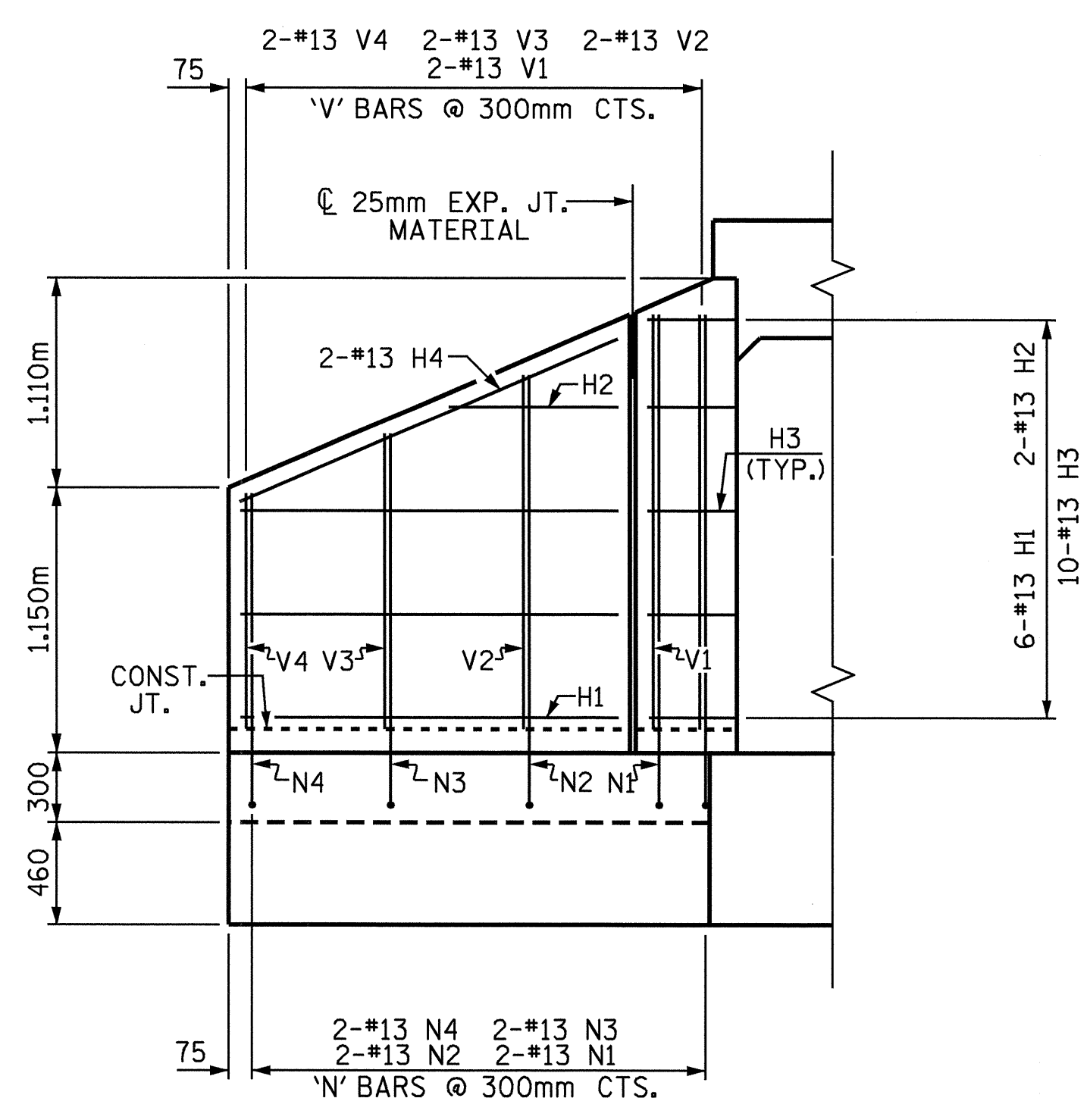
PLAN W1

BAR TYPES

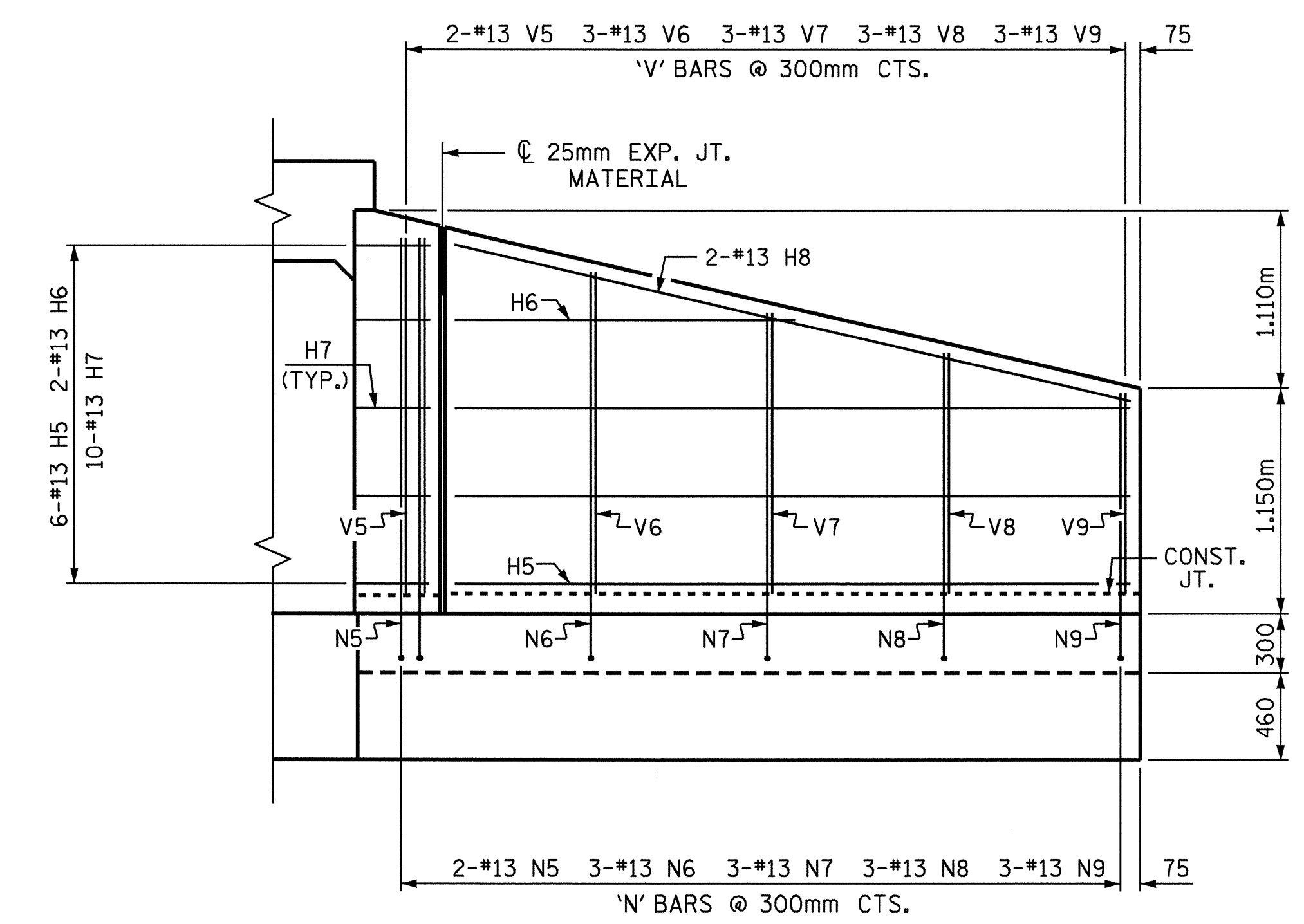
ALL BAR DIMENSIONS ARE OUT TO OUT.

BAR	NO.	SIZE	TYPE	LENGTH	WEIGHT
H1	12	13	STR	1640	20
H2	4	13	STR	780	3
H3	20	13	1	980	19
H4	4	13	STR	1780	7
H5	12	13	STR	3440	41
H6	4	13	STR	1940	8
H7	20	13	2	980	19
H8	4	13	STR	3520	14
N1	4	13	3	2440	10
N2	4	13	3	2180	9
N3	4	13	3	1920	8
N4	4	13	3	1640	7
N5	4	13	3	2520	10
N6	6	13	3	2300	14
N7	6	13	3	2080	12
N8	6	13	3	1860	11
N9	6	13	3	1640	10
T1	6	16	STR	2200	20
T2	6	16	STR	4000	37
V1	4	13	STR	1820	7
V2	4	13	STR	1560	6
V3	4	13	STR	1300	5
V4	4	13	STR	1020	4
V5	4	13	STR	1900	8
V6	6	13	STR	1680	10
V7	6	13	STR	1460	9
V8	6	13	STR	1240	7
V9	6	13	STR	1020	6
Z1	4	13	4	1380	5
Z2	4	13	4	1240	5
Z3	4	13	4	1060	4
Z4	4	13	4	900	4
Z5	4	13	4	1440	6
Z6	6	13	4	1300	8
Z7	6	13	4	1160	7
Z8	6	13	4	1020	6
Z9	6	13	4	900	5

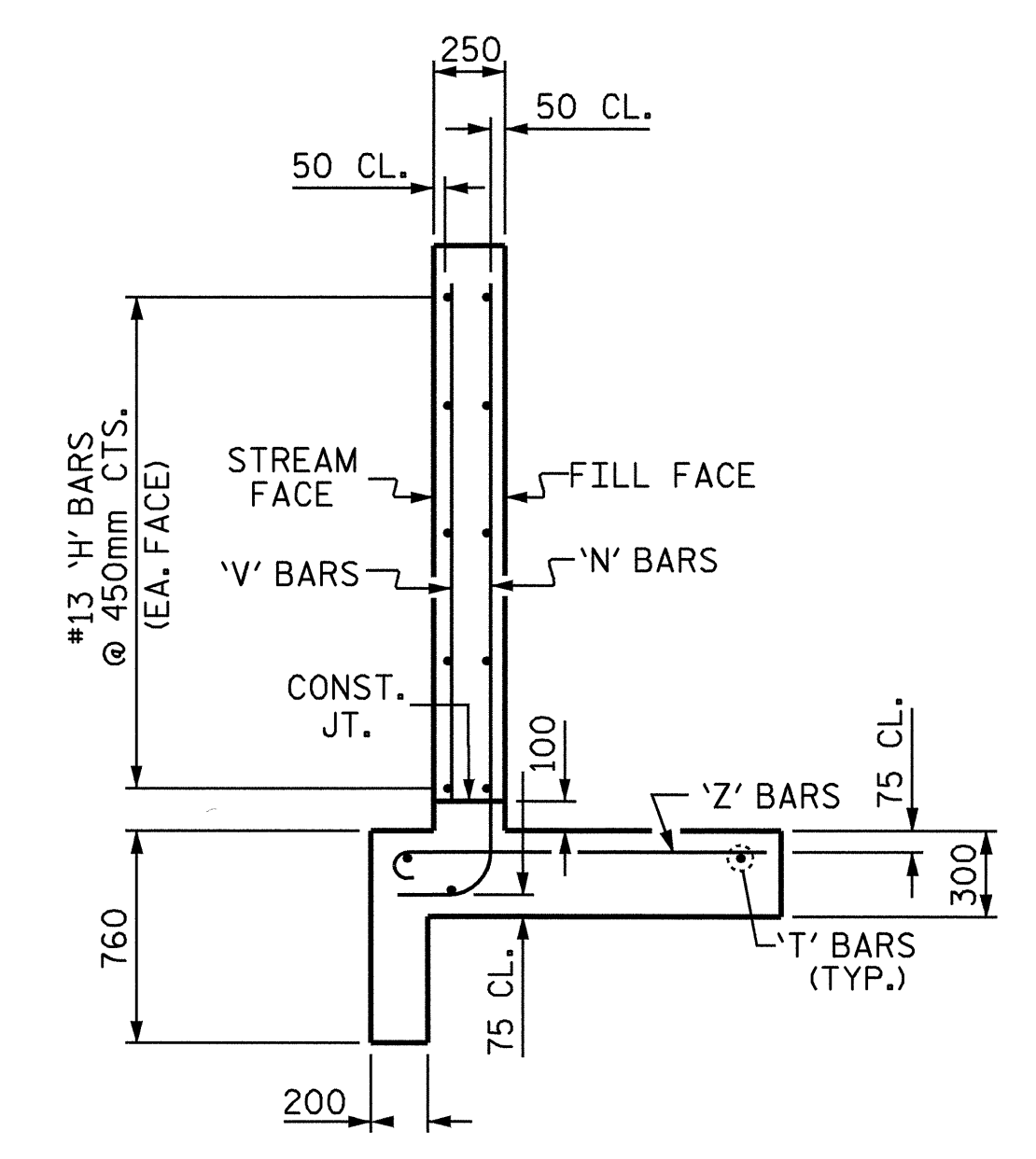
REINFORCING STEEL FOR 4 WING WALLS				391	kg
CLASS A CONCRETE					
4	WINGS		10.6	m ³	
2	HEADWALLS		0.9	m ³	
2	END CURTAIN WALLS		1.0	m ³	
TOTAL				12.5	m ³



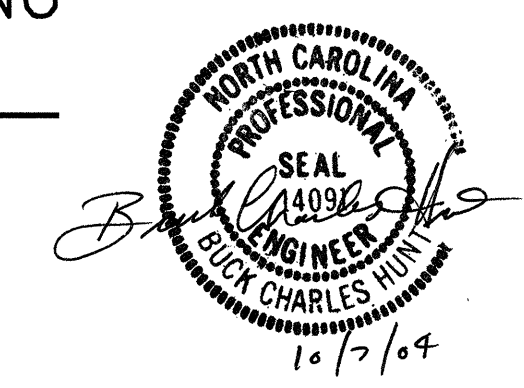
ELEVATION W2



ELEVATION W1



TYPICAL WING SECTION



PROJECT NO. R-2206B
LINCOLN COUNTY
 STATION: 132+58.00 -L-
 SHEET 4 OF 4

STATE OF NORTH CAROLINA
 DEPARTMENT OF TRANSPORTATION
 RALEIGH
**STANDARD WINGS
 FOR
 CONCRETE BOX CULVERT**
 H=1.8m SLOPE=2:1
 120° SKEW

ASSEMBLED BY : T. G. PAYNE DATE : 10-4-04
 CHECKED BY : B. C. HUNT DATE : 10-4-04
 DRAWN BY : JLR 6/97
 CHECKED BY : VAP 6/97

REVISIONS					SHEET NO.
NO.	BY:	DATE:	NO.	DATE:	C-9
1			3		TOTAL SHEETS
2			4		15