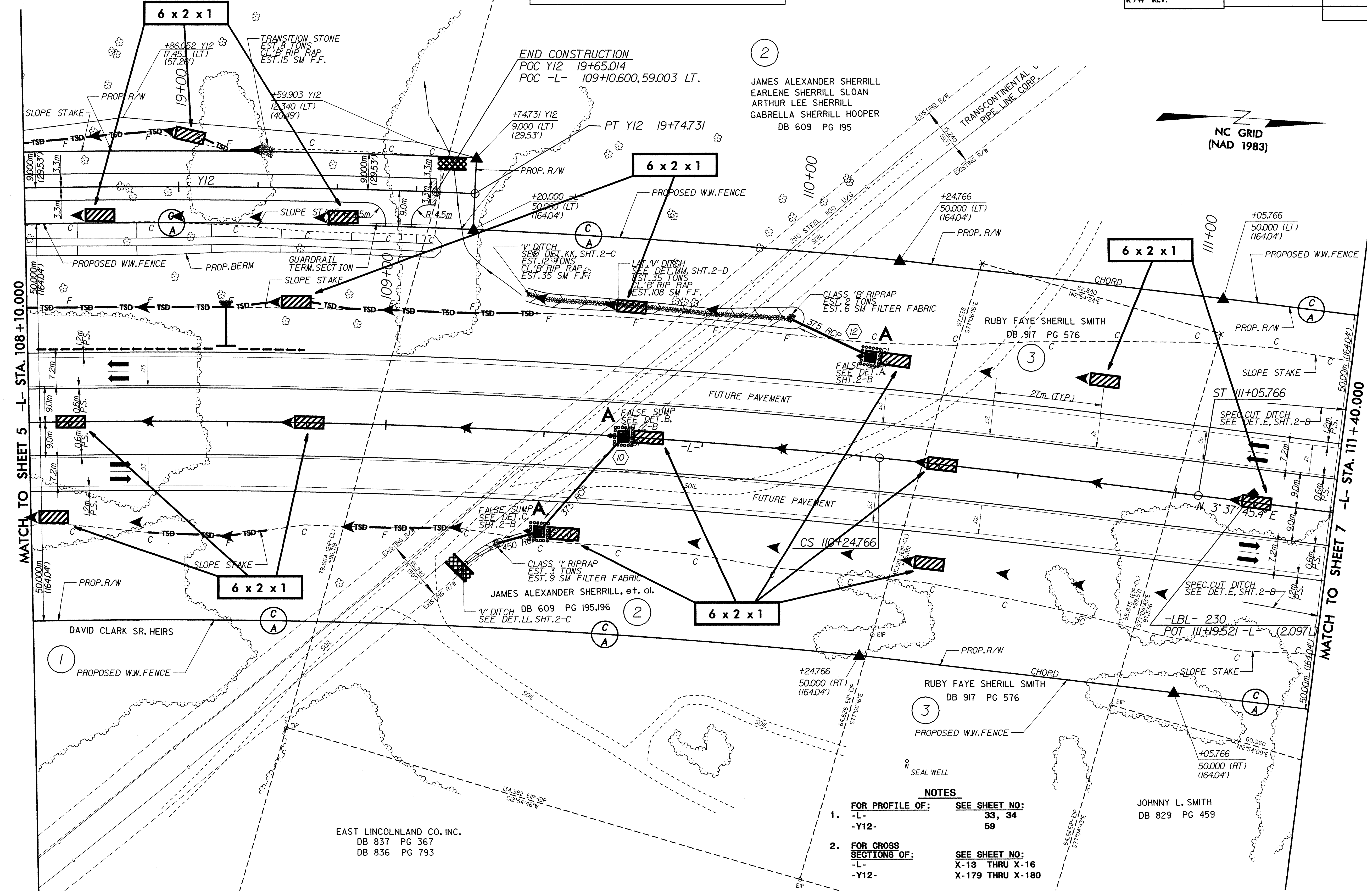
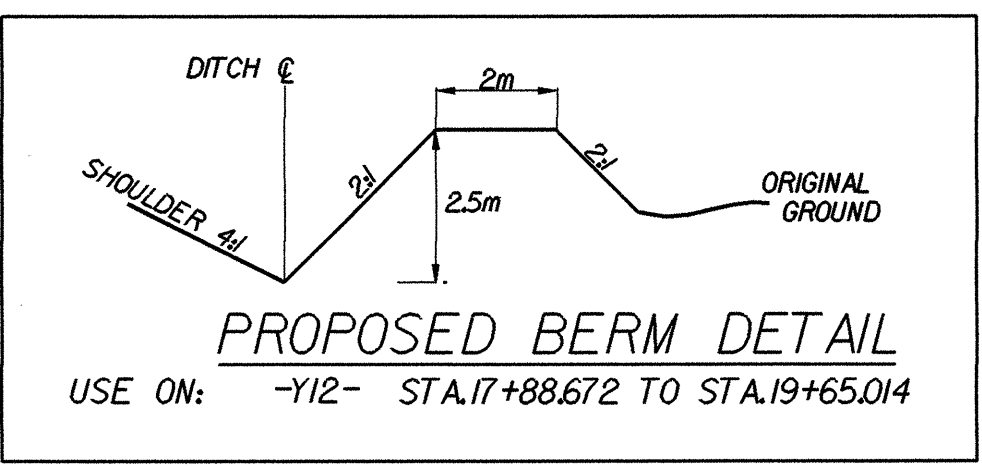
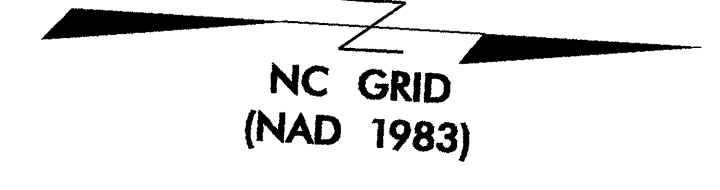


PROJECT REFERENCE NO.	SHEET NO.
R-2206B	EC-35/CONST. 6
R/W SHEET NO.	
ROADWAY DESIGN ENGINEER	HYDRAULICS ENGINEER
CONST. REV.	
R/W REV.	

Y12
 P.I. = 18+48.370
 $\Delta c = 8' 01" 02.9" (RT)$
 $Rc = 1,809.000$
 $Lc = 253.136$
 $Tc = 126.775$
 $Ec = 4.437$
 $D.S. = 60 \text{ km/hr}$



2
 JAMES ALEXANDER SHERRILL
 EARLENE SHERRILL SLOAN
 ARTHUR LEE SHERRILL
 GABRELLA SHERRILL HOOPER
 DB 609 PG 195



MATCH TO SHEET 5 -L- STA. 108+10.000

MATCH TO SHEET 7 -L- STA. 111+40.000

- NOTES**
- FOR PROFILE OF: SEE SHEET NO:
 -L- 33, 34
 -Y12- 59
 - FOR CROSS SECTIONS OF: SEE SHEET NO:
 -L- X-13 THRU X-16
 -Y12- X-179 THRU X-180

EAST LINCOLN LAND CO. INC.
 DB 837 PG 367
 DB 836 PG 793