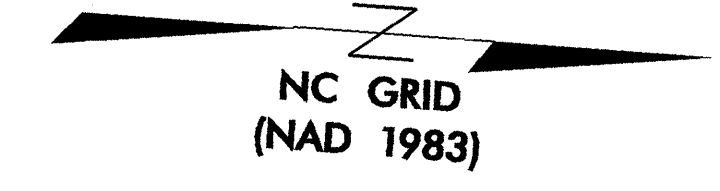
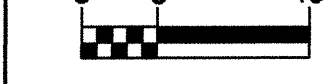
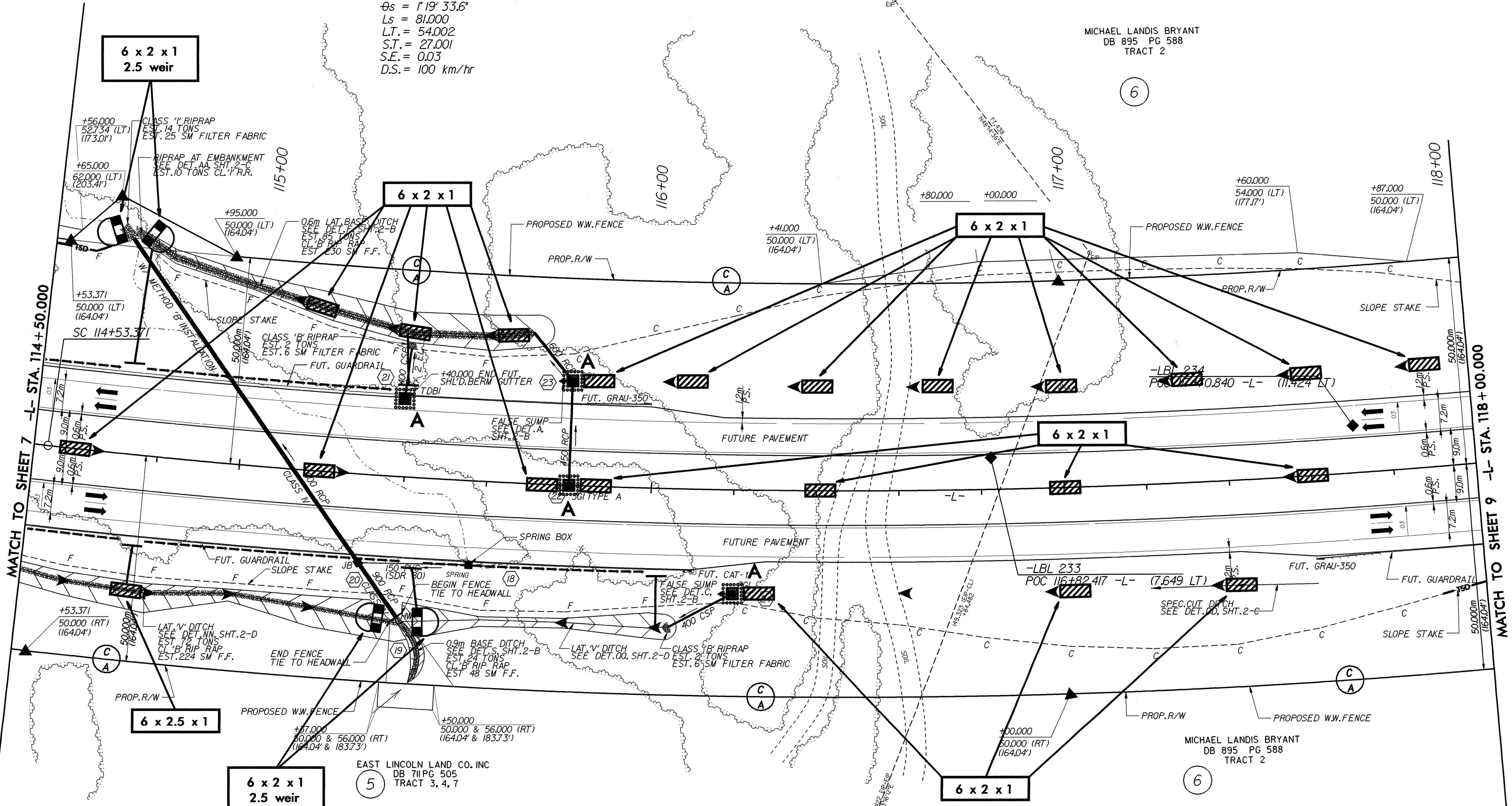
	PROJECT REFERENCE NO.	SHEET NO.
	R-2206B	EC-37/CONST. 8
	R/W SHEET NO.	
ROADWAY DESIGN ENGINEER	HYDRAULICS ENGINEER	
CONST. REV.		
R/W REV.		



-L-
 P.I. = 116+92.856
 $\Delta T = 18^\circ 10' 40.9''$ (LT)
 $\Delta C = 15^\circ 31' 33.8''$ (LT)
 $R_c = 1,750,000$
 $L_c = 474.217$
 $T_c = 238.570$
 $\theta_s = 1^\circ 19' 33.6''$
 $L_s = 81,000$
 $L.T. = 54,002$
 $S.T. = 27,001$
 $S.E. = 0.03$
 $D.S. = 100 \text{ km/hr}$

EAST LINCOLN LAND CO. INC
 DB 711 PG 505
 TRACT 3, 4, 7

MICHAEL LANDIS BRYANT
 DB 895 PG 588
 TRACT 2



MATCH TO SHEET 7 -L- STA. 114+50.000

MATCH TO SHEET 9 -L- STA. 118+00.000

MICHAEL LANDIS BRYANT
 DB 895 PG 588
 TRACT 2

- NOTES**
- FOR PROFILE OF: -L- SEE SHEET NO: 35, 36
 - FOR CROSS SECTIONS OF: -L- SEE SHEET NO: X-23 THRU X-29