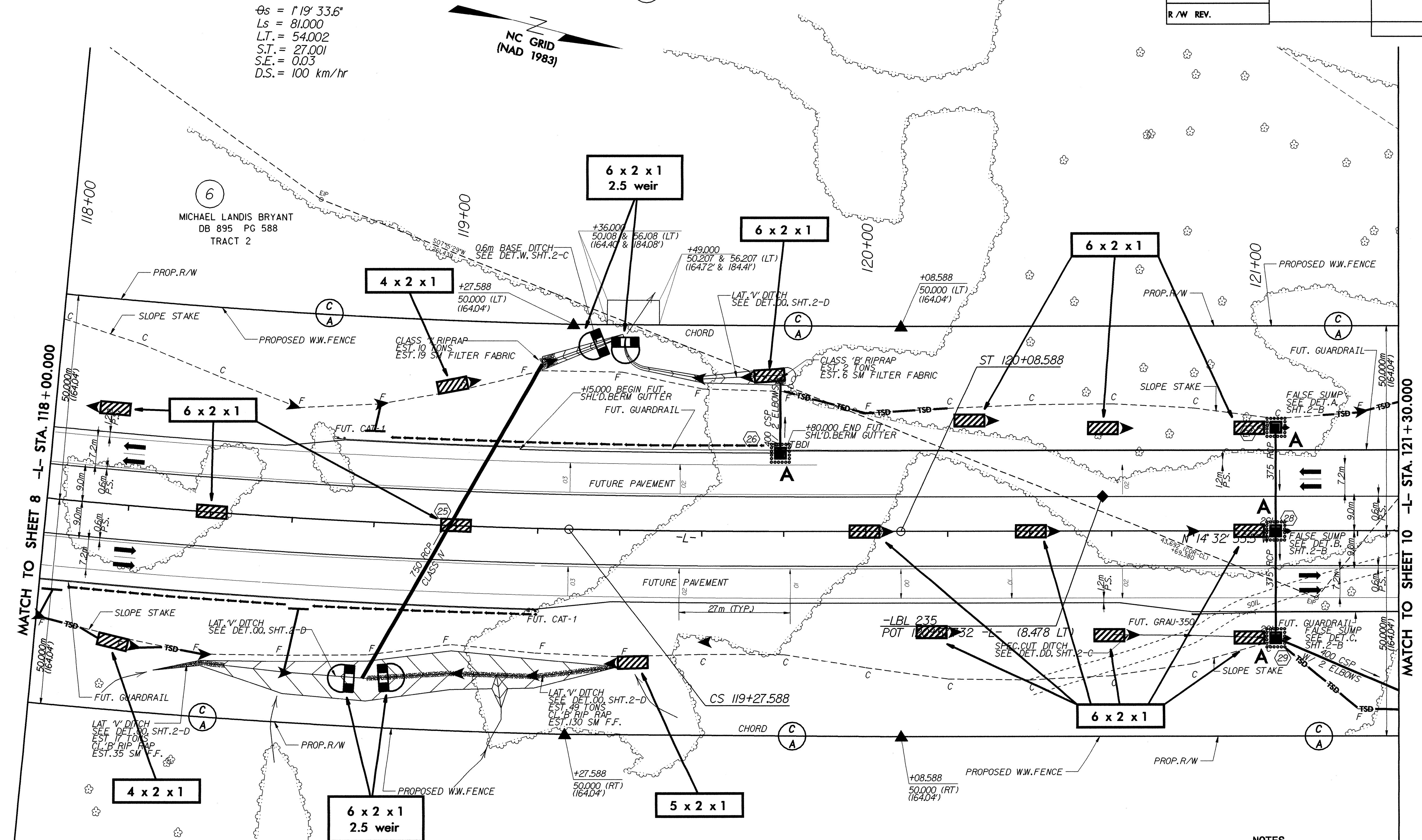
 5 0 10	PROJECT REFERENCE NO.	SHEET NO.
	R-2206B	EC-38/CONST. 9
CONST. REV. R/W REV.	R/W SHEET NO.	HYDRAULICS ENGINEER
	ROADWAY DESIGN ENGINEER	

-L-
 P.I. = 116+92.856
 $\Delta T = 18^\circ 10' 40.9''$ (LT)
 $\Delta C = 15^\circ 31' 33.8''$ (LT)
 $R_c = 1,750.000$
 $L_c = 474.217$
 $T_c = 238.570$
 $\theta_s = 1^\circ 19' 33.6''$
 $L_s = 81.000$
 $L.T. = 54.002$
 $S.T. = 27.001$
 $S.E. = 0.03$
 $D.S. = 100 \text{ km/hr}$

EAST LINCOLN LAND COMPANY
 DB 711 PG 505
 TRACT 3, 4, 7



- NOTES**
- FOR PROFILE OF: SEE SHEET NO:
-L- 36, 37
 - FOR CROSS SECTIONS OF: SEE SHEET NO:
-L- X-29 THRU X-34