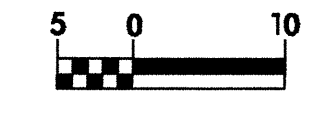


|                         |                     |
|-------------------------|---------------------|
| PROJECT REFERENCE NO.   | SHEET NO.           |
| R-2206B                 | EC-50CONST.21       |
| R/W SHEET NO.           |                     |
| ROADWAY DESIGN ENGINEER | HYDRAULICS ENGINEER |
| CONST. REV.             |                     |
| R/W REV.                |                     |

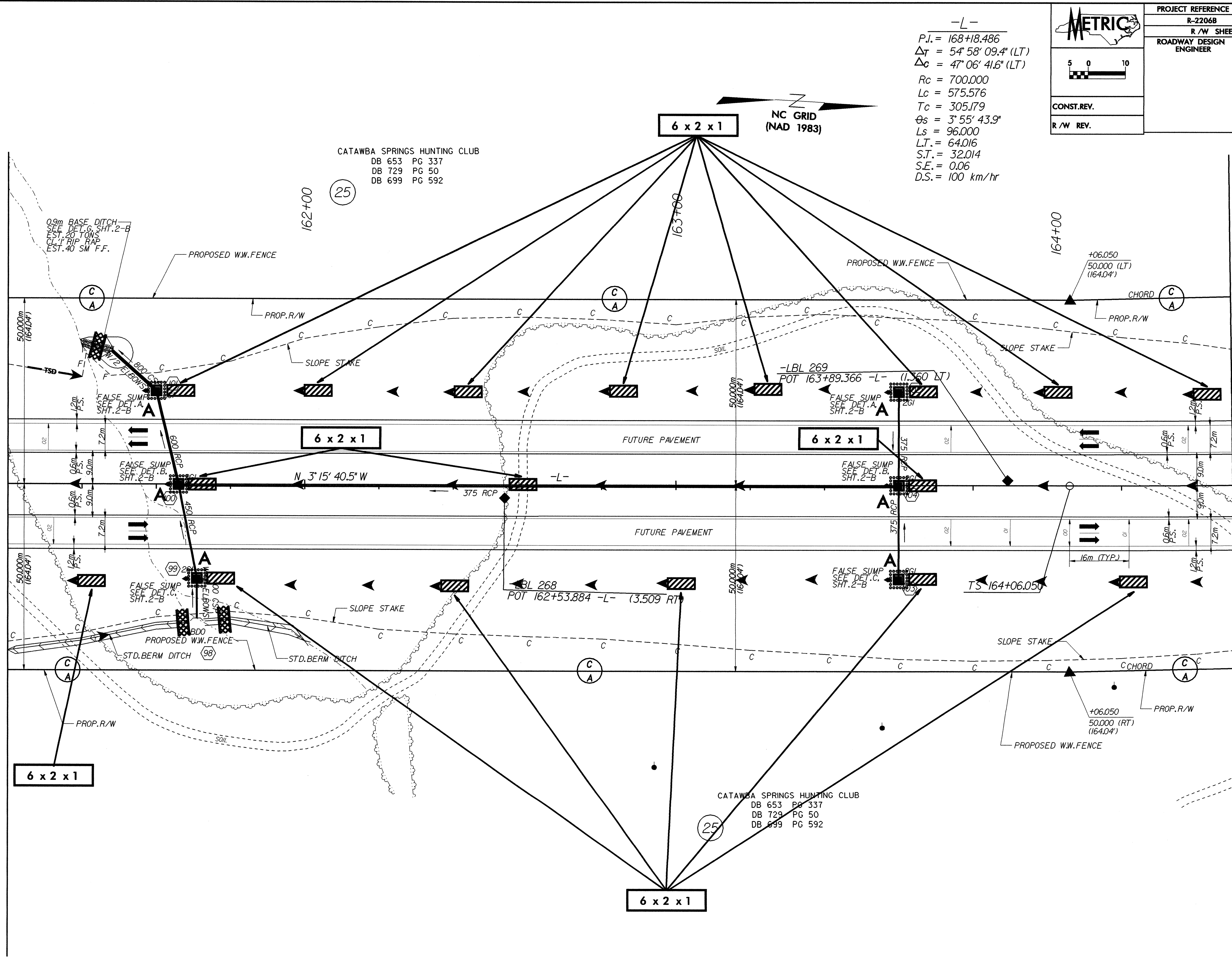
-L-

P.I. = 168+18.486  
 $\Delta T = 54' 58" 09.4" (LT)$   
 $\Delta C = 47' 06" 41.6" (LT)$   
 $R_c = 700.000$   
 $L_c = 575.576$   
 $T_c = 305.179$   
 $\theta_s = 3' 55" 43.9"$   
 $L_s = 96.000$   
 $L.T. = 64.016$   
 $S.T. = 32.014$   
 $S.E. = 0.06$   
 $D.S. = 100 \text{ km/hr}$



MATCH TO SHEET 20 -L- STA. 161+20.000

MATCH TO SHEET 22 -L- STA. 164+50.000



CATAWBA SPRINGS HUNTING CLUB  
 DB 653 PG 337  
 DB 729 PG 50  
 DB 699 PG 592

CATAWBA SPRINGS HUNTING CLUB  
 DB 653 PG 337  
 DB 729 PG 50  
 DB 699 PG 592