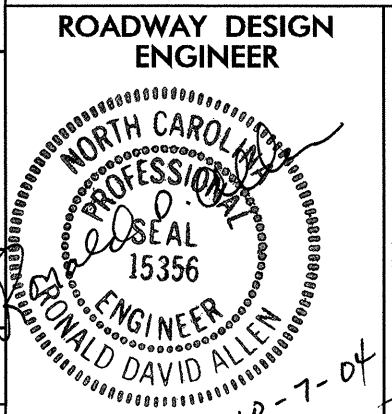

 5 0 10	PROJECT REFERENCE NO.	SHEET NO.
	R-2206C	4
ROADWAY DESIGN ENGINEER	R/W SHEET NO.	
 DAVID ALLEN 15356 10-7-04	HYDRAULICS ENGINEER  DAVID ALLEN 14180 10/2/04	
CONST. REV.	R/W REV.	

PROJECT R-2206B

COORDINATE EQUALITY
 R-2206B -L- STA. 180+68.273
 N 198040.1829 E 425570.7538 =
 R-2206C -L- STA. 180+66.801
 N 198038.7150 E 425571.6370

-L- STA. 180+68.273 LB
 END PROJECT R-2206B
 END CONST.
 -L- STA. 180+66.801 LA
 BEGIN PROJECT R-2206C
 BEGIN CONST.

-BL- 284 ON PROJECT R-2206B: N = 198,022.568
 E = 425,585.668
 -BL- 284 ON PROJECT R-2206C: N = 198,021.100
 E = 425,586.551

DATUM DESCRIPTION
 THE LOCALIZED COORDINATE SYSTEM DEVELOPED FOR THIS PROJECT IS BASED ON THE STATE PLANE COORDINATES ESTABLISHED BY NCDOT FOR MONUMENT "R-2206C" WITH NAD 83 STATE PLANE GRID COORDINATES OF NORTHING: 201911707(m) EASTING: 421559.554(m) THE AVERAGE COMBINED GRID FACTOR USED ON THIS PROJECT (GROUND TO GRID) IS: 0.99984371 THE N.C. LAMBERT GRID BEARING LOCALIZED HORIZONTAL GROUND DISTANCE FROM "R-2206C" TO -L- STATION 180+66.801 IS S 46 00 58.1 E 5,876.457m ALL LINEAR DIMENSIONS ARE LOCALIZED HORIZONTAL DISTANCES VERTICAL DATUM USED IS NGVD 29

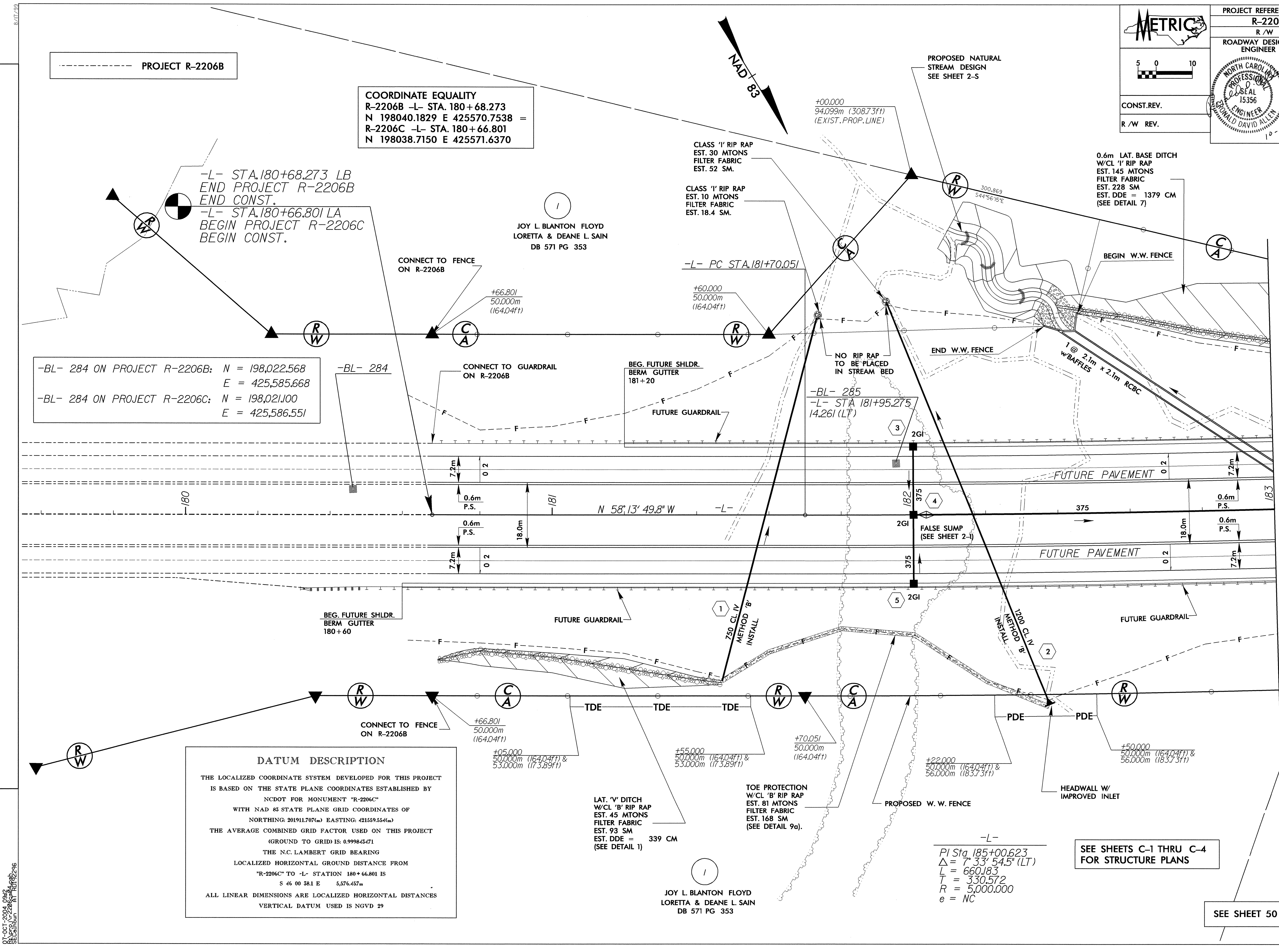
JOY L. BLANTON FLOYD
 LORETTA & DEANE L. SAIN
 DB 571 PG 353

REVISIONS

MATCHLINE SEE SHEET 5
 -L- STA. 183+00.000

SEE SHEETS C-1 THRU C-4 FOR STRUCTURE PLANS

SEE SHEET 50 FOR -L- PROFILE



07-OCT-2004 09:48
 S:\CADD\RD\2206C\RD192296.dwg