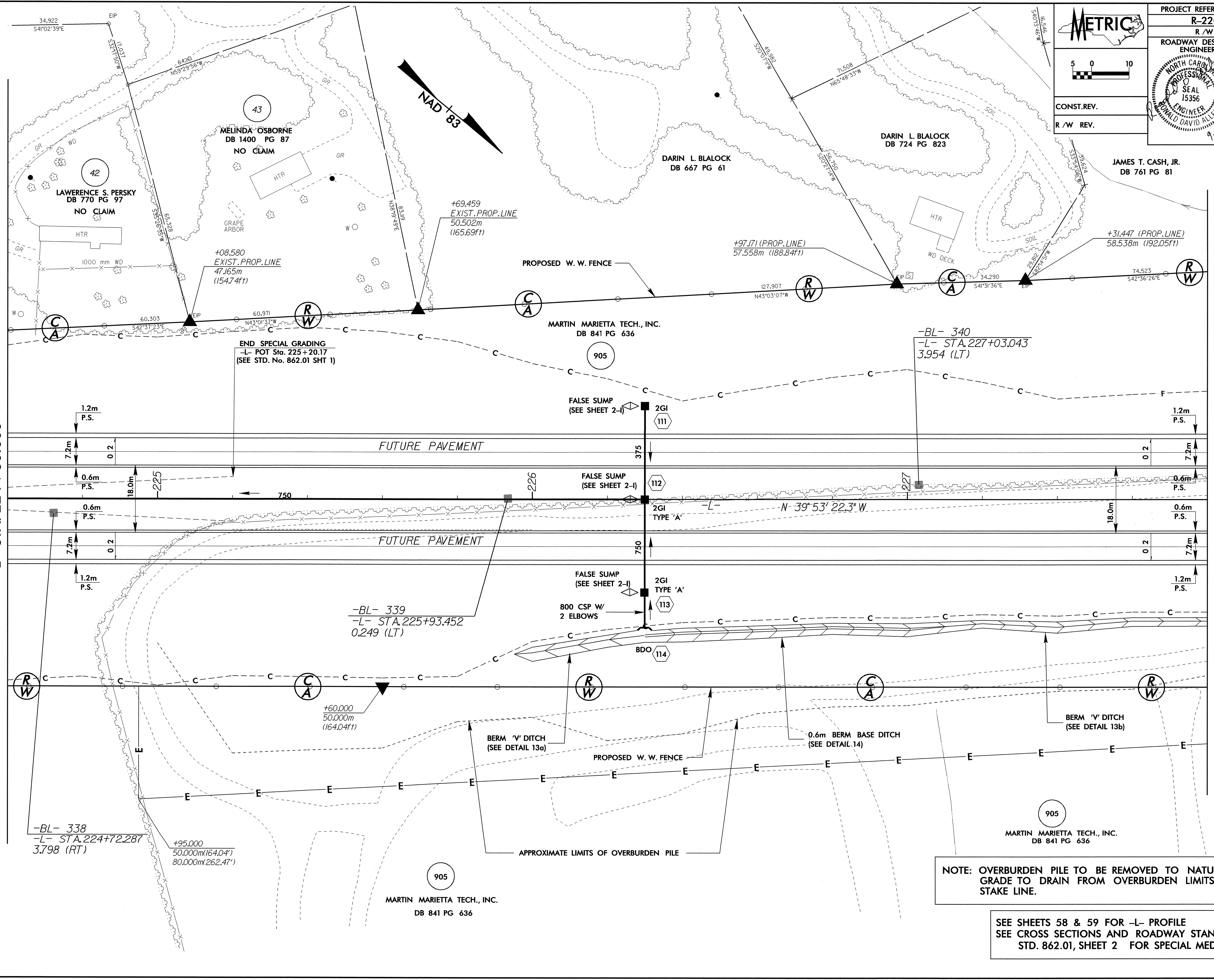


PROJECT REFERENCE NO. R-2206C		SHEET NO. 18	
R/W SHEET NO.		HYDRAULICS ENGINEER	
ROADWAY DESIGN ENGINEER		SEAL 15356	
CONST. REV.		SEAL 14160	
R/W REV.		9-29-04	



MATCHLINE SEE SHEET 17
-L- STA. 224 + 60.000

MATCHLINE SEE SHEET 19
-L- STA. 227 + 80.000

NOTE: OVERBURDEN PILE TO BE REMOVED TO NATURAL GROUND. GRADE TO DRAIN FROM OVERBURDEN LIMITS TO SLOPE STAKE LINE.

SEE SHEETS 58 & 59 FOR -L- PROFILE
SEE CROSS SECTIONS AND ROADWAY STANDARD DRAWINGS, STD. 862.01, SHEET 2 FOR SPECIAL MEDIAN GRADING.

REVISIONS

SEP-29-04 16:35
RD192296
SECALHOUN AT RD192296