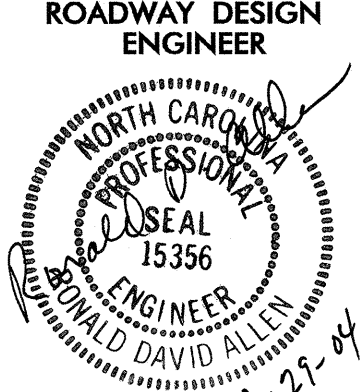

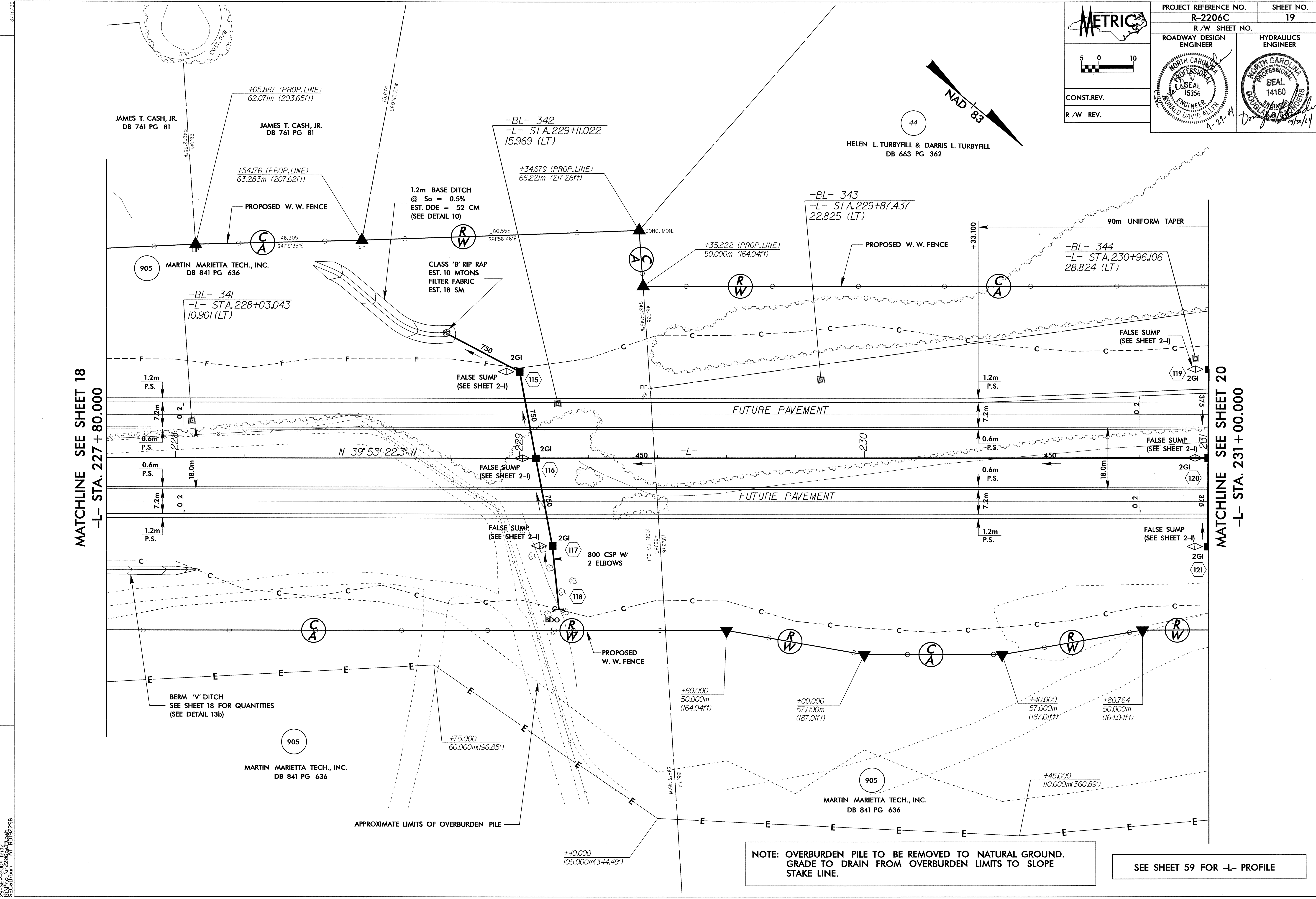
 5 0 10	PROJECT REFERENCE NO.	SHEET NO.
	R-2206C	19
CONST. REV.	R/W SHEET NO.	
R/W REV.	ROADWAY DESIGN ENGINEER	HYDRAULICS ENGINEER
		



NOTE: OVERBURDEN PILE TO BE REMOVED TO NATURAL GROUND. GRADE TO DRAIN FROM OVERBURDEN LIMITS TO SLOPE STAKE LINE.

SEE SHEET 59 FOR -L- PROFILE

REVISIONS

20 SEP 2004 10:35  
 88 PER VZ206319.eph  
 SECALHOUN AT RD192296