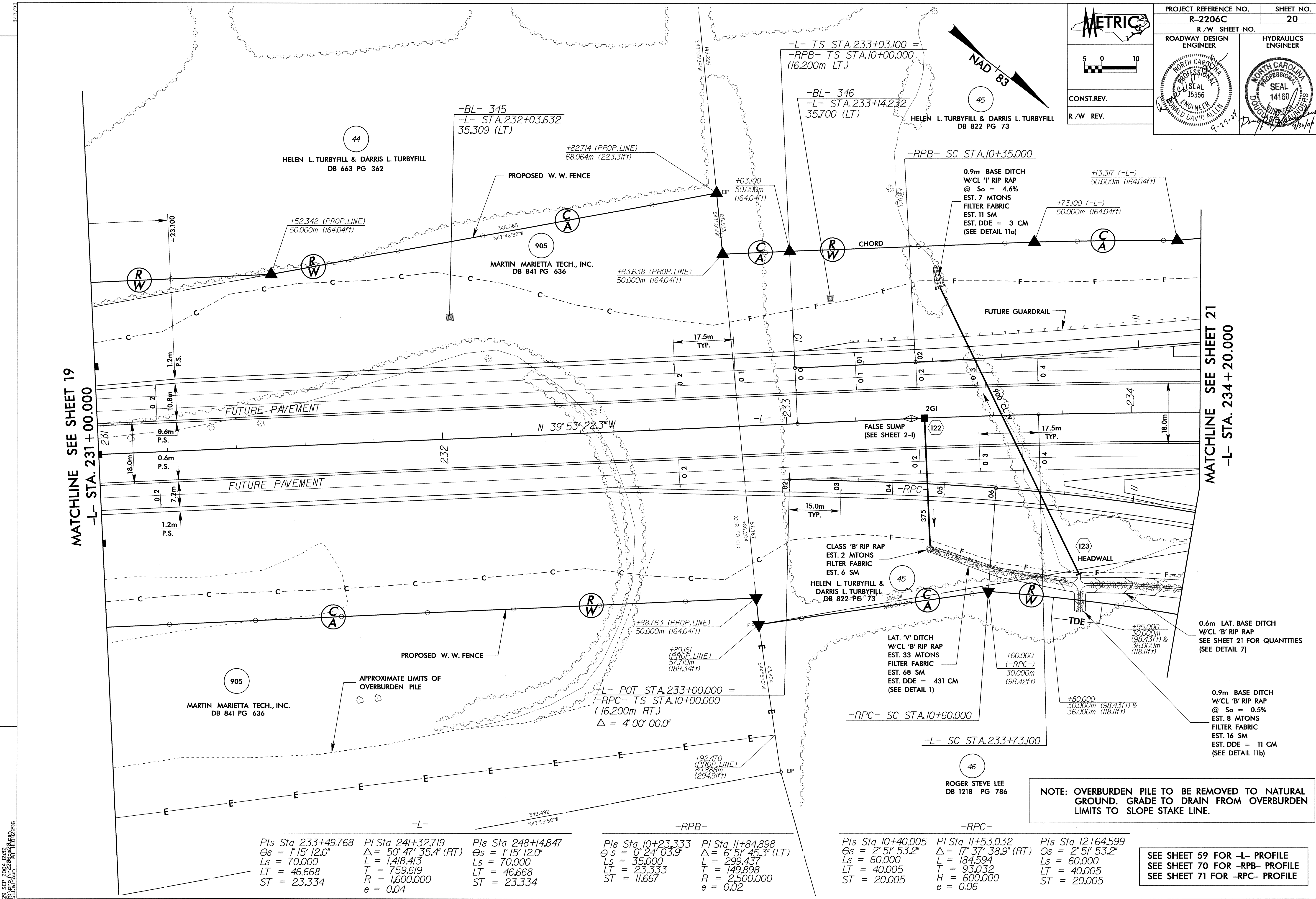


PROJECT REFERENCE NO. R-2206C SHEET NO. 20
 R/W SHEET NO. ROADWAY DESIGN ENGINEER HYDRAULICS ENGINEER
 METRIC
 5 0 10
 CONST. REV. R/W REV.
 HELEN L. TURBYFILL & DARRIS L. TURBYFILL DB 822 PG 73
 NORTH CAROLINA PROFESSIONAL ENGINEER SEAL 15356
 NORTH CAROLINA PROFESSIONAL ENGINEER SEAL 14160
 9-29-04



REVISIONS

MATCHLINE SEE SHEET 19
 -L- STA. 231+00.000

MATCHLINE SEE SHEET 21
 -L- STA. 234+20.000

NOTE: OVERBURDEN PILE TO BE REMOVED TO NATURAL GROUND. GRADE TO DRAIN FROM OVERBURDEN LIMITS TO SLOPE STAKE LINE.

Pls Sta 233+49.768 $\Theta s = 1^{\circ} 15' 12.0''$ $Ls = 70.000$ $LT = 46.668$ $ST = 23.334$	Pls Sta 241+32.719 $\Delta = 50^{\circ} 47' 35.4''$ (RT) $L = 1,418.413$ $T = 759.619$ $R = 1,600.000$ $e = 0.04$	Pls Sta 248+14.847 $\Theta s = 1^{\circ} 15' 12.0''$ $Ls = 70.000$ $LT = 46.668$ $ST = 23.334$	Pls Sta 10+23.333 $\Theta s = 0^{\circ} 24' 03.9''$ $Ls = 35.000$ $LT = 23.333$ $ST = 11.667$	Pls Sta 11+84.898 $\Delta = 6^{\circ} 51' 45.3''$ (LT) $L = 299.437$ $T = 149.898$ $R = 2,500.000$ $e = 0.02$	Pls Sta 10+40.005 $\Theta s = 2^{\circ} 51' 53.2''$ $Ls = 60.000$ $LT = 40.005$ $ST = 20.005$	Pls Sta 11+53.032 $\Delta = 17^{\circ} 37' 38.9''$ (RT) $L = 184.594$ $T = 93.032$ $R = 600.000$ $e = 0.06$	Pls Sta 12+64.599 $\Theta s = 2^{\circ} 51' 53.2''$ $Ls = 60.000$ $LT = 40.005$ $ST = 20.005$
--	--	--	---	--	---	--	---

SEE SHEET 59 FOR -L- PROFILE
 SEE SHEET 70 FOR -RPC- PROFILE
 SEE SHEET 71 FOR -RPC- PROFILE

23-SEP-2004 12:42
 23-SEP-2004 12:42
 23-SEP-2004 12:42