

8/17/04  
30-AUG-2004 07:54  
SE:CS/RAUR:R/11/08/206

MATCHLINE SEE SHEET 15

MATCHLINE SEE SHEET 15  
-Y13- STA. 12+20.000

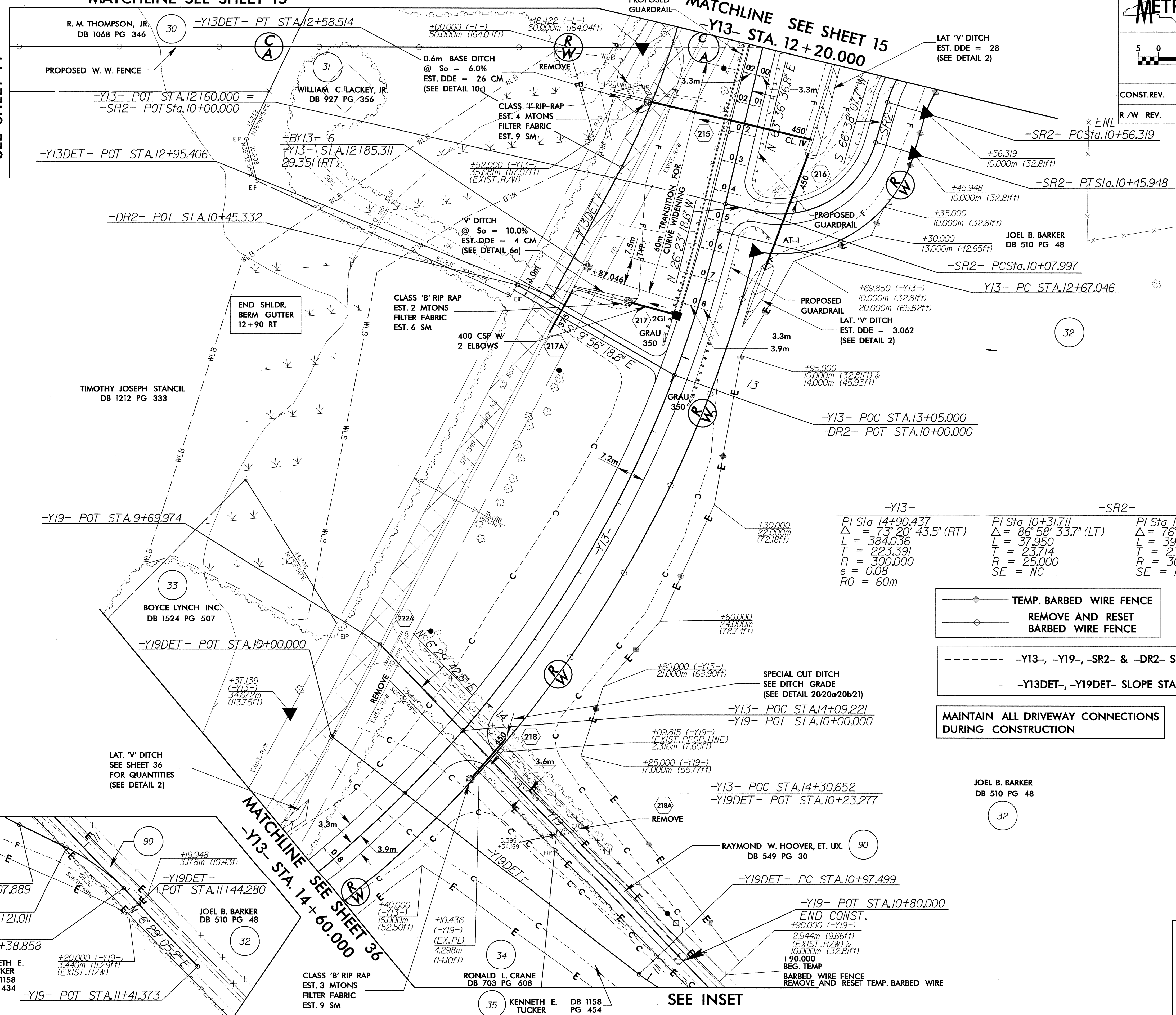
PROJECT REFERENCE NO. R-2206C SHEET NO. 35  
R/W SHEET NO.  
ROADWAY DESIGN ENGINEER  
HYDRAULICS ENGINEER  
CONST. REV.  
R/W REV.

METRIC  
5 0 10

PROFESSIONAL SEAL 15356  
PROFESSIONAL SEAL 14160

9-2-04  
9/16/04

MATCHLINE SEE SHEET 14

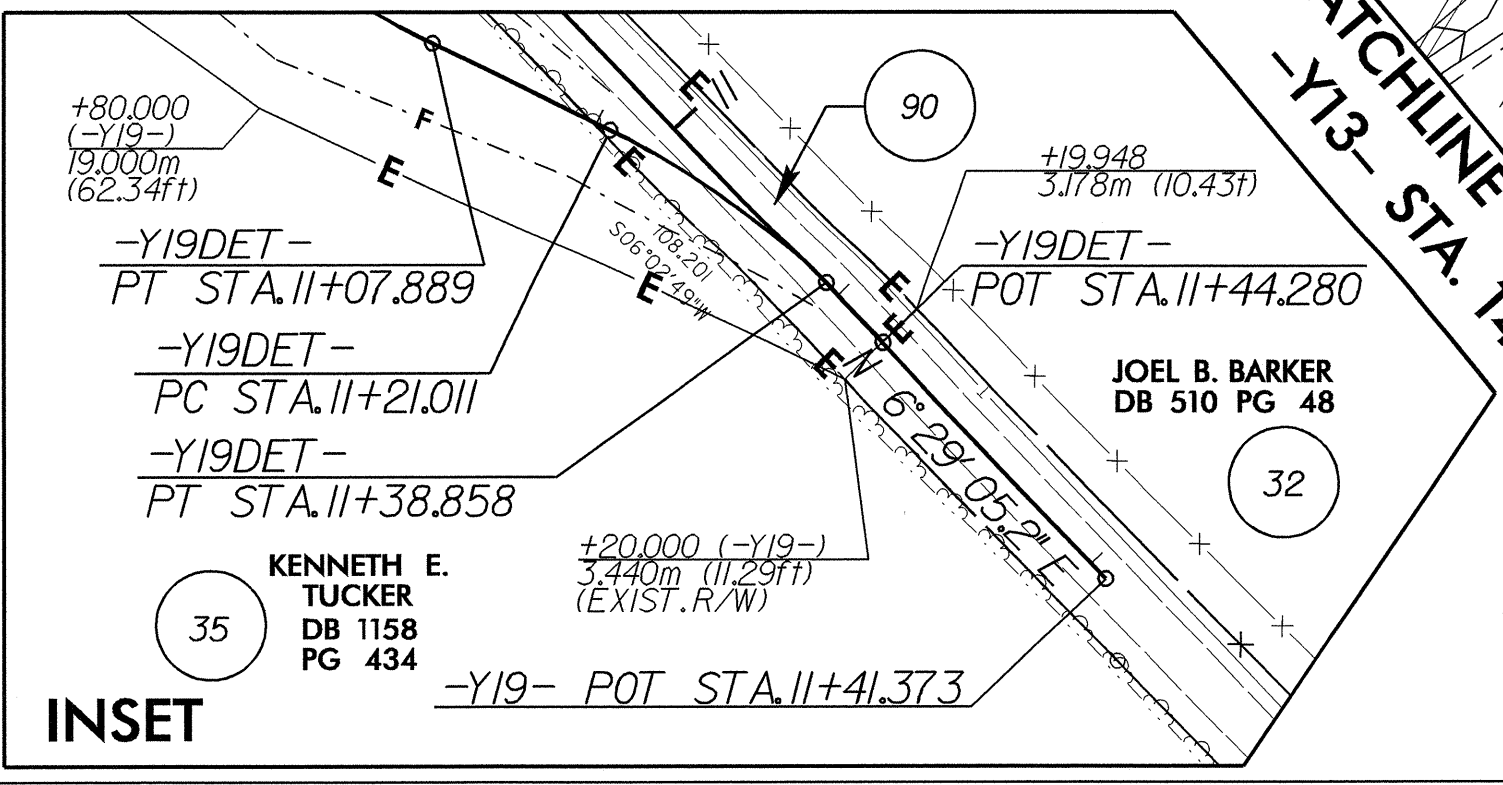


CLASS EST. 10  
FILTER EST. 18.

-Y13-	-SR2-	-Y19-
PI Sta 14+90.437	PI Sta 10+31.711	PI Sta 10+79.831
$\Delta = 73^{\circ} 20' 43.5''$ (RT)	$\Delta = 86^{\circ} 58' 33.7''$ (LT)	$\Delta = 76^{\circ} 10' 31.3''$ (RT)
L = 384.036	L = 37.950	L = 39.885
T = 223.391	T = 23.714	T = 23.513
R = 300.000	R = 25.000	R = 30.000
e = 0.08	SE = NC	SE = NC
RO = 60m		

- TEMP. BARBED WIRE FENCE
- REMOVE AND RESET BARBED WIRE FENCE
- Y13-, -Y19-, -SR2- & -DR2- SLOPE STAKES
- Y13DET-, -Y19DET- SLOPE STAKES

MAINTAIN ALL DRIVEWAY CONNECTIONS DURING CONSTRUCTION



INSET

CLASS 'B' RIP RAP EST. 3 MTONS FILTER FABRIC EST. 9 SM

SEE INSET

SEE SHEETS 74 & 75 FOR -Y13- PROFILE  
SEE SHEET 81 FOR -Y19- PROFILE  
SEE SHEET 45 FOR -Y13- DETOUR  
SEE SHEET 75 FOR -Y13DET- PROFILE  
SEE SHEET 49 FOR -Y19- DETOUR  
SEE SHEET 81 FOR -Y19DET- PROFILE  
SEE SHEET 82 FOR -DR2- PROFILE  
SEE SHEET 83 FOR -SR2- PROFILE