

METRIC

PROJECT REFERENCE NO. R-2206C SHEET NO. 42

R/W SHEET NO.

ROADWAY DESIGN ENGINEER HYDRAULICS ENGINEER

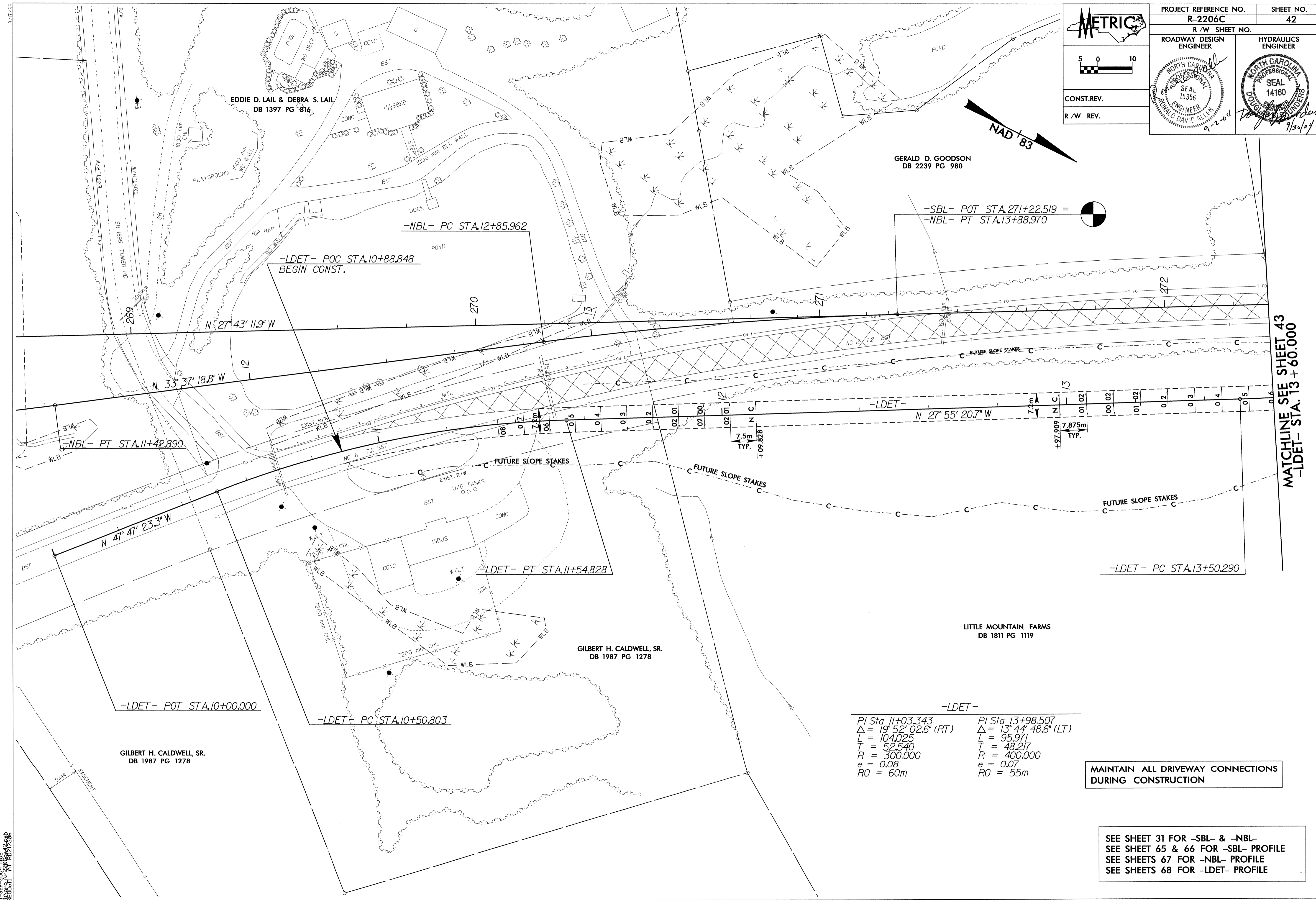
CONST. REV. R/W REV.

SEAL 15356
NORTH CAROLINA PROFESSIONAL ENGINEER
RONALD DAVID ALLEN
9-2-04

SEAL 14160
NORTH CAROLINA PROFESSIONAL ENGINEER
DAVID J. WILSON
9/29/04

5 0 10

NAD '83



-LDET-

PI Sta 11+03.343	PI Sta 13+98.507
$\Delta = 19^\circ 52' 02.6" (RT)$	$\Delta = 13^\circ 44' 48.6" (LT)$
$L = 104.025$	$L = 95.971$
$T = 52.540$	$T = 48.217$
$R = 300.000$	$R = 400.000$
$e = 0.08$	$e = 0.07$
$RO = 60m$	$RO = 55m$

MAINTAIN ALL DRIVEWAY CONNECTIONS DURING CONSTRUCTION

SEE SHEET 31 FOR -SBL- & -NBL-
SEE SHEETS 65 & 66 FOR -SBL- PROFILE
SEE SHEETS 67 FOR -NBL- PROFILE
SEE SHEETS 68 FOR -LDET- PROFILE