

PROJECT REFERENCE NO. R-2206C SHEET NO. 46

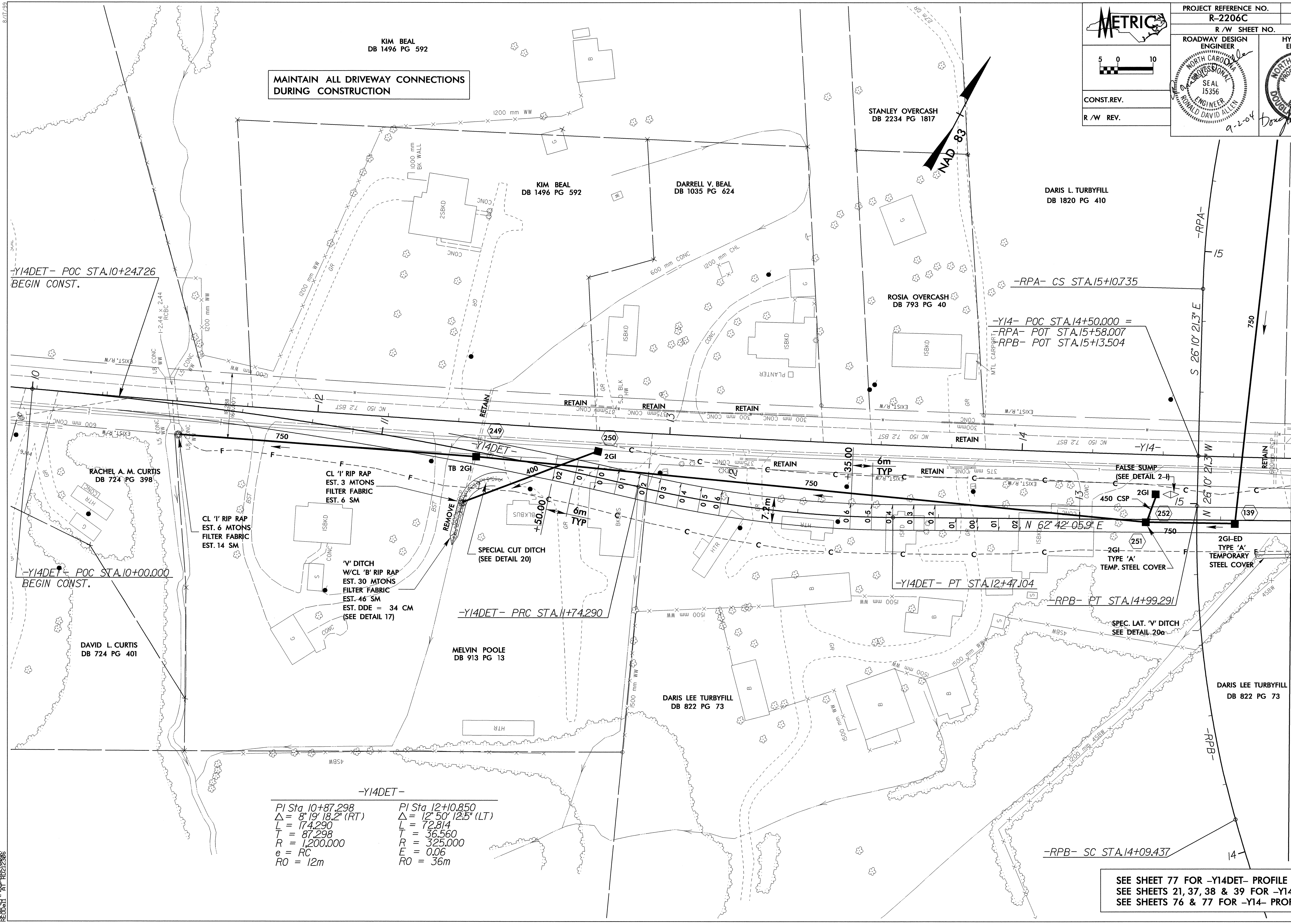
R/W SHEET NO.

ROADWAY DESIGN ENGINEER
 SEAL 15356
 NORTH CAROLINA PROFESSIONAL ENGINEER
 HOWARD DAVID ALLEN

HYDRAULICS ENGINEER
 SEAL 14160
 NORTH CAROLINA PROFESSIONAL ENGINEER
 DOUGLAS BAUNDERS

CONST. REV.
 R/W REV.

9-2-04
 9/30/04



MAINTAIN ALL DRIVEWAY CONNECTIONS DURING CONSTRUCTION

-Y14DET- POC STA.10+24.726 BEGIN CONST.

-Y14DET- POC STA.10+00.000 BEGIN CONST.

-RPA- CS STA.15+10.735
 -Y14- POC STA.14+50.000 =
 -RPA- POT STA.15+58.007
 -RPA- POT STA.15+13.504

-Y14DET-

PI Sta 10+87.298	PI Sta 12+10.850
$\Delta = 8' 19'' 18.2'' (RT)$	$\Delta = 12' 50'' 12.5'' (LT)$
L = 174.290	L = 72.814
T = 87.298	T = 36.560
R = 1,200.000	R = 325.000
e = RC	E = 0.06
RO = 12m	RO = 36m

SEE SHEET 77 FOR -Y14DET- PROFILE
 SEE SHEETS 21, 37, 38 & 39 FOR -Y14-
 SEE SHEETS 76 & 77 FOR -Y14- PROFILE

MATCHLINE SEE SHEET 47
 -Y14DET- STA. 13 + 60.000

17-SEP-2004 13:49
 REVISION 1