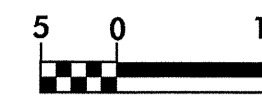
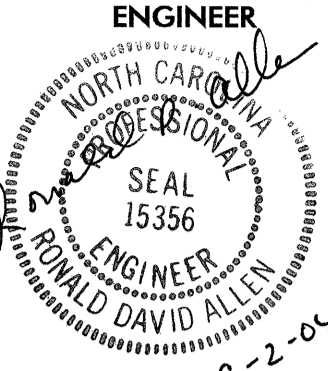
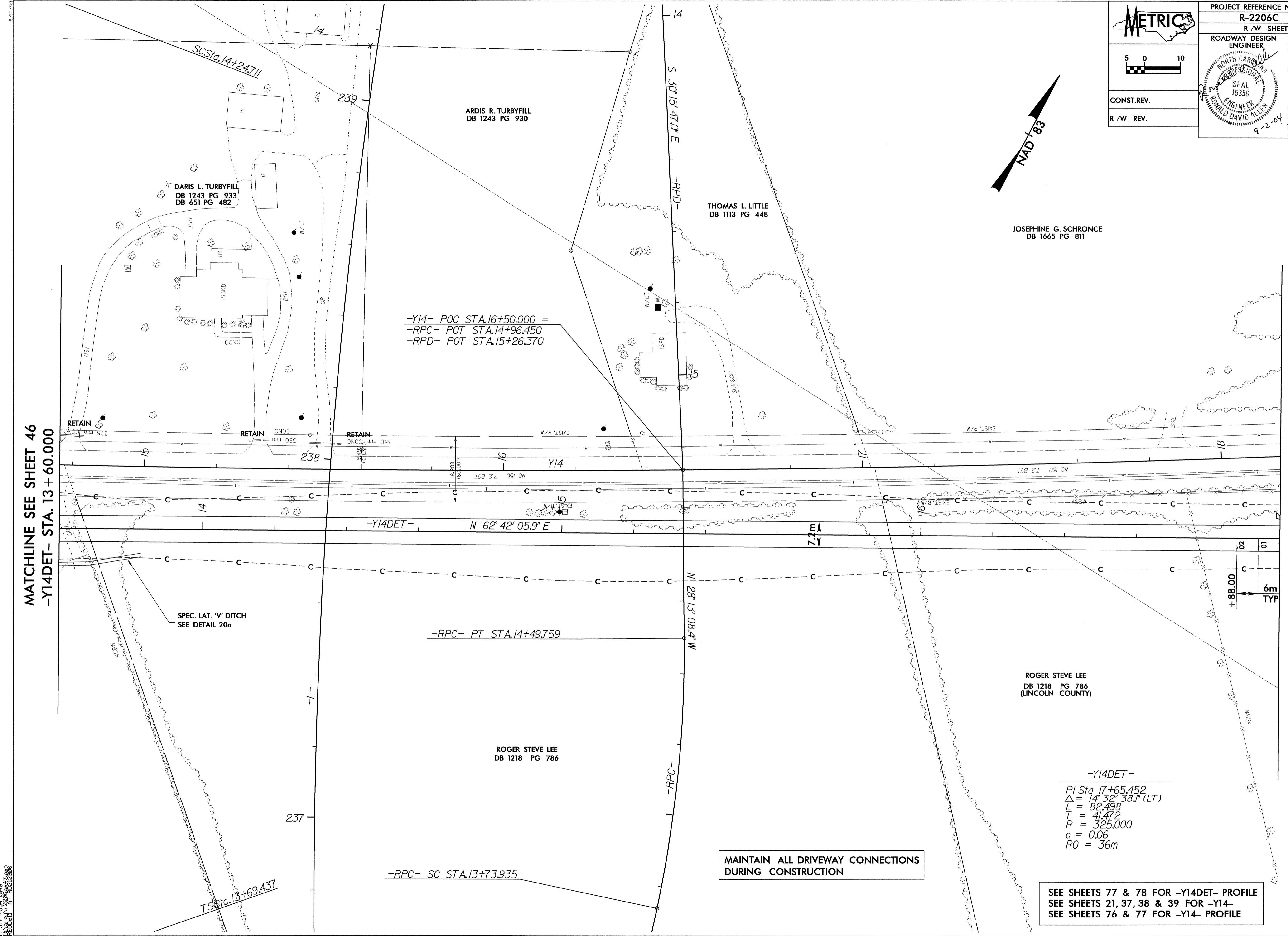
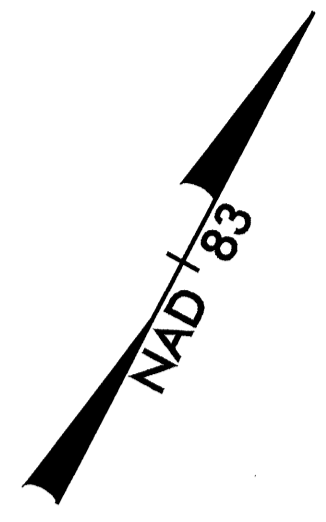
	PROJECT REFERENCE NO.	SHEET NO.
	R-2206C	47
	R/W SHEET NO.	
	ROADWAY DESIGN ENGINEER	HYDRAULICS ENGINEER
CONST. REV.		
R/W REV.		



MATCHLINE SEE SHEET 46
-Y14DET- STA. 13 + 60.000

MATCHLINE SEE SHEET 48
-Y14DET- STA. 17 + 00.000



-Y14- POC STA. 16+50.000 =
-RPC- POT STA. 14+96.450
-RPD- POT STA. 15+26.370

-RPC- PT STA. 14+49.759

-RPC- SC STA. 13+73.935

ROGER STEVE LEE
DB 1218 PG 786
(LINCOLN COUNTY)

-Y14DET-
PI Sta 17+65.452
 $\Delta = 14^{\circ} 32' 38.1''$ (LT)
L = 82.498
T = 41.472
R = 325.000
e = 0.06
RO = 36m

MAINTAIN ALL DRIVEWAY CONNECTIONS
DURING CONSTRUCTION

SEE SHEETS 77 & 78 FOR -Y14DET- PROFILE
SEE SHEETS 21, 37, 38 & 39 FOR -Y14-
SEE SHEETS 76 & 77 FOR -Y14- PROFILE

1. SEP-0004, 1449
REVISION AT 10/21/2004