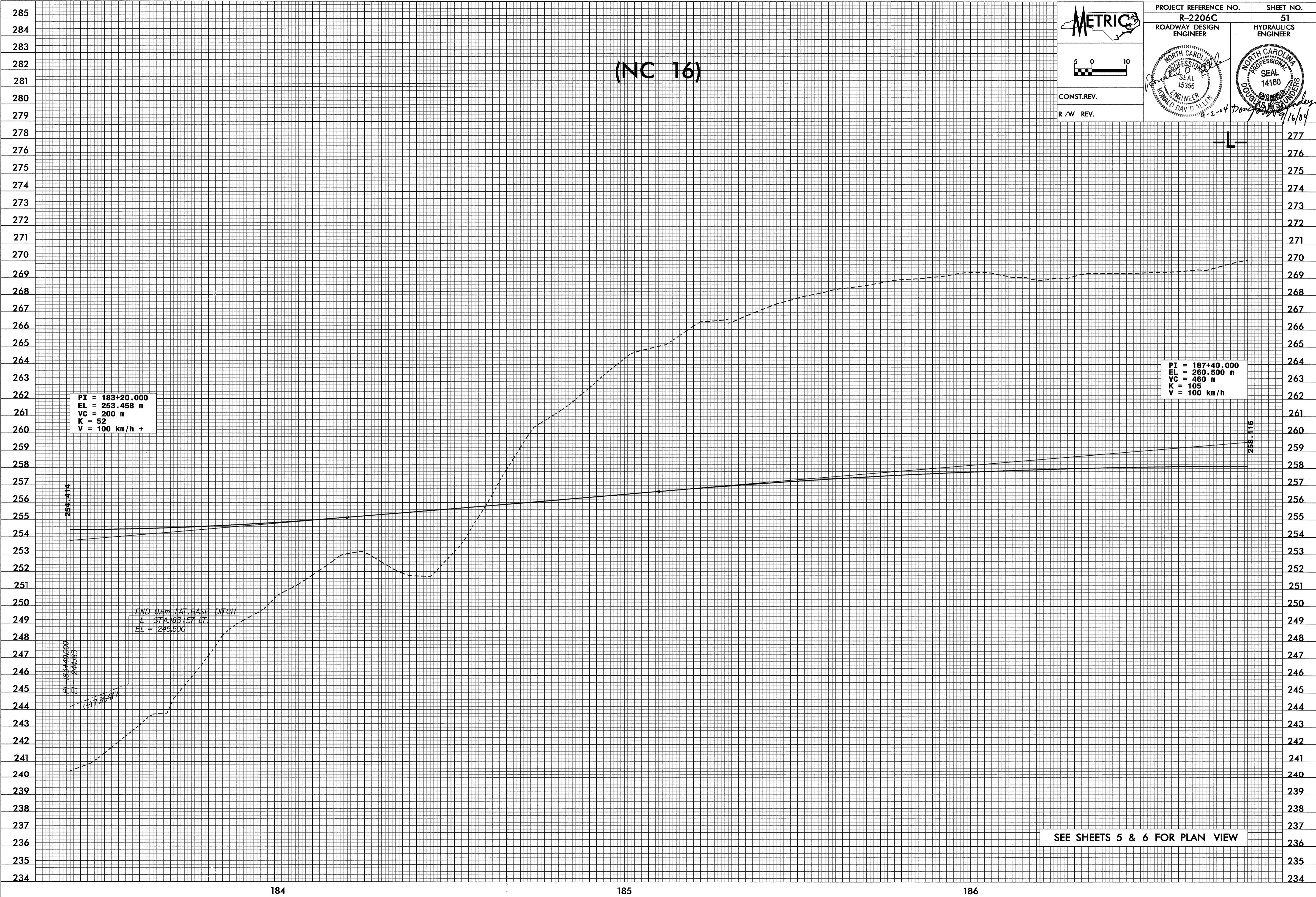


0.0092  
15-JUL-2004 15:52  
SECalhoun AT RD192296



(NC 16)

**METRIC**  
ROADWAY DESIGN ENGINEER

PROJECT REFERENCE NO. R-2206C  
SHEET NO. 51

HYDRAULICS ENGINEER

CONST. REV.  
R /W REV.

Professional Engineer Seal: RONALD DAVID ALLEN, SEAL 15356, dated 9-2-04

Professional Engineer Seal: DOUGLAS SAUNDERS, SEAL 14160, dated 9/16/04

PI = 183+20.000  
EL = 253.458 m  
VC = 200 m  
K = 52  
V = 100 km/h +

PI = 187+40.000  
EL = 260.500 m  
VC = 460 m  
K = 105  
V = 100 km/h

END 0.6m LAT. BASE DITCH  
L STA. 183+57.17  
EL = 245.500

PI = 183+40.000  
EI = 244.163  
L = 7.8647%

SEE SHEETS 5 & 6 FOR PLAN VIEW

184

185

186