

METRIC

PROJECT REFERENCE NO. R-2206C SHEET NO. 12
 R/W SHEET NO. 12
 ROADWAY DESIGN ENGINEER HYDRAULICS ENGINEER

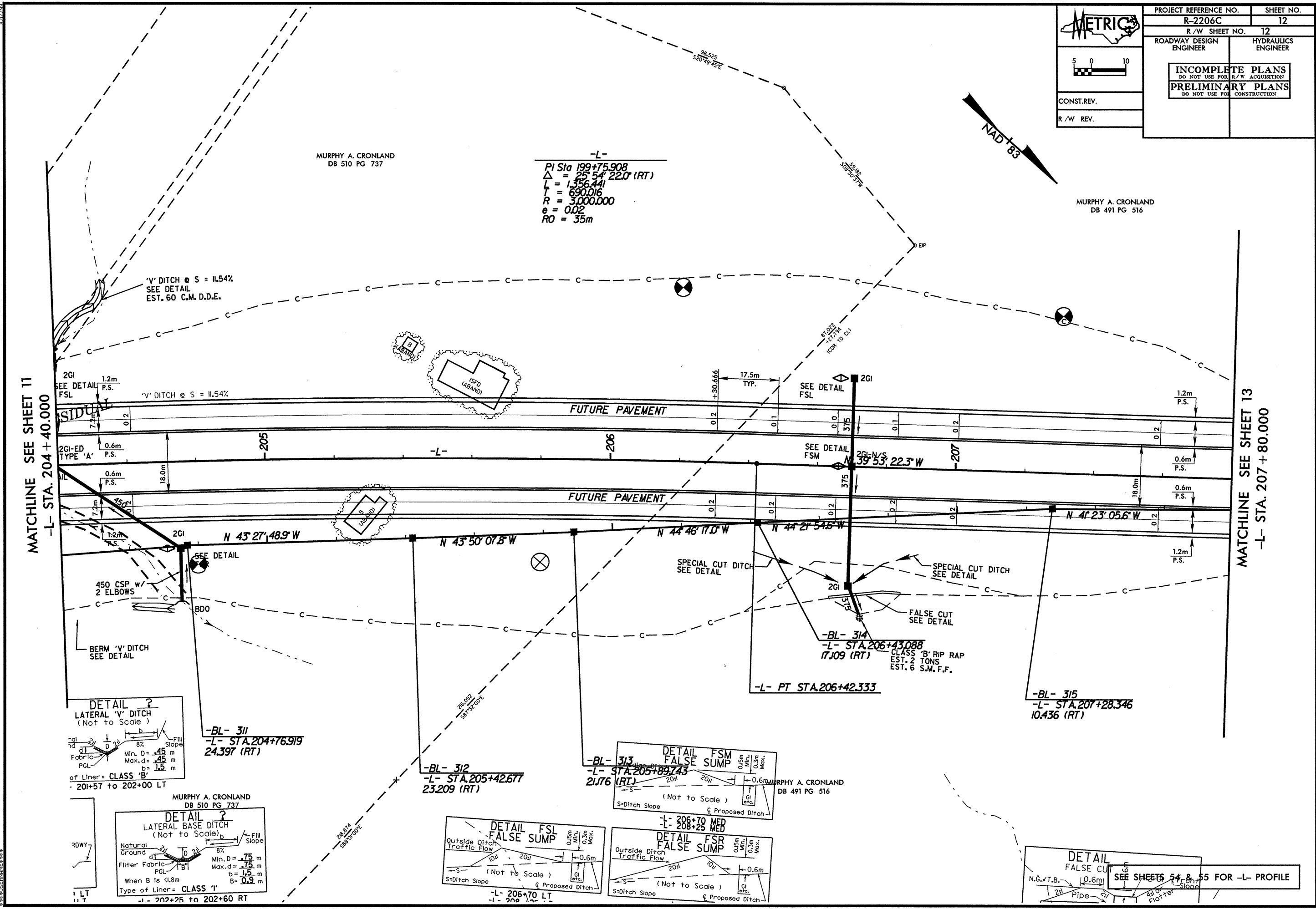
INCOMPLETE PLANS
 DO NOT USE FOR R/W ACQUISITION
PRELIMINARY PLANS
 DO NOT USE FOR CONSTRUCTION

CONST. REV.
 R/W REV.

5 0 10

NAD 83

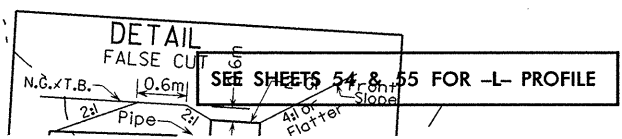
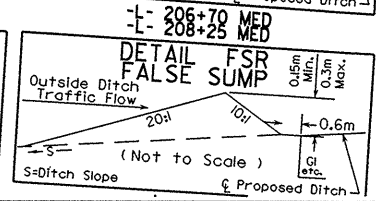
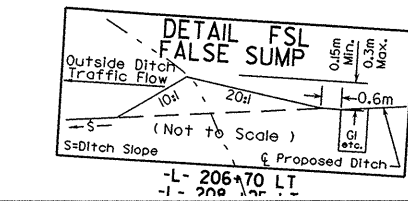
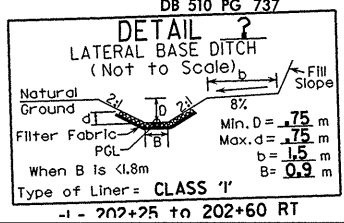
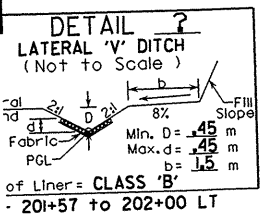
MURPHY A. CRONLAND
 DB 491 PG 516



-L-
 PI Sta 199+75.908
 $\Delta = 25^\circ 54' 22.0''$ (RT)
 $L = 1356.441$
 $R = 3000.000$
 $e = 0.02$
 $RO = 35m$

MATCHLINE SEE SHEET 11
 -L- STA. 204+40.000

MATCHLINE SEE SHEET 13
 -L- STA. 207+80.000



-BL- 311
 -L- STA. 204+76.919
 24.397 (RT)

-BL- 312
 -L- STA. 205+42.677
 23.209 (RT)

-BL- 313
 -L- STA. 205+89.743
 21J76 (RT)

-BL- 314
 -L- STA. 206+43.088
 17.109 (RT)
 CLASS 'B' RIP RAP
 EST. 2 TONS
 EST. 6 S.M.F.F.

-BL- 315
 -L- STA. 207+28.346
 10.436 (RT)

-L- PT STA. 206+42.333

MURPHY A. CRONLAND
 DB 491 PG 516

*****SYSTEMS*****
 *****CON*****
