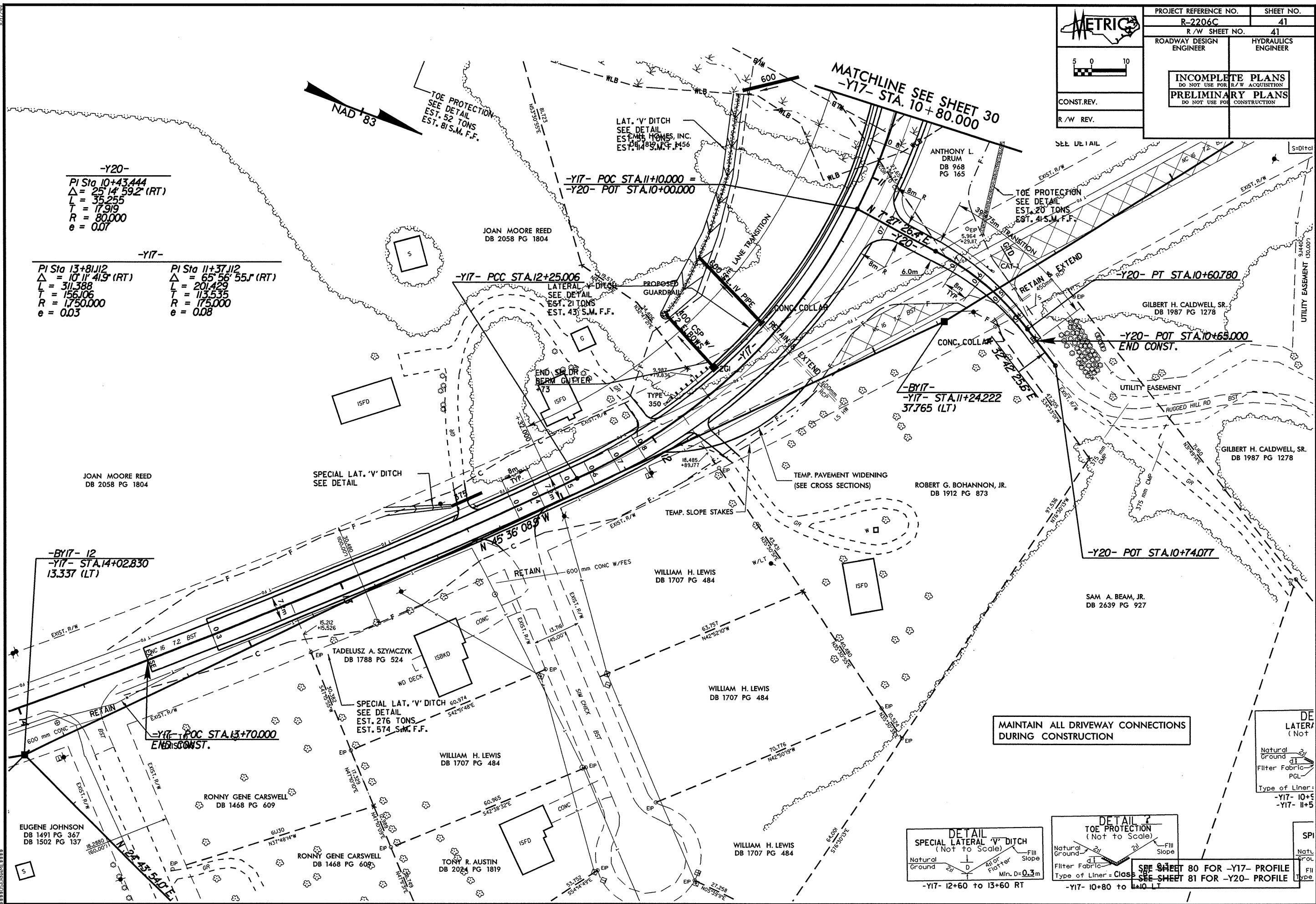
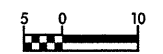


PROJECT REFERENCE NO. R-2206C		SHEET NO. 41	
ROADWAY DESIGN ENGINEER		HYDRAULICS ENGINEER	
CONST. REV.		R/W REV.	
INCOMPLETE PLANS DO NOT USE FOR R/W ACQUISITION PRELIMINARY PLANS DO NOT USE FOR CONSTRUCTION			



-Y20-
 PI Sta 10+43.444
 $\Delta = 25^\circ 14' 59.2''$ (RT)
 $L = 35.255$
 $T = 17.919$
 $R = 80.000$
 $e = 0.07$

-Y17-
 PI Sta 13+81.112 PI Sta 11+37.112
 $\Delta = 10^\circ 11' 41.9''$ (RT) $\Delta = 65^\circ 56' 55.1''$ (RT)
 $L = 311.388$ $L = 201.429$
 $T = 156.106$ $T = 113.535$
 $R = 1,750.000$ $R = 1,750.000$
 $e = 0.03$ $e = 0.08$

-BY17- 12
-Y17- STA. 14+02.830
13.337 (LT)

-Y17- POC STA. 13+70.000
END CONST.

-Y17- POC STA. 11+10.000 =
-Y20- POT STA. 10+00.000

-Y17- PCC STA. 12+25.006

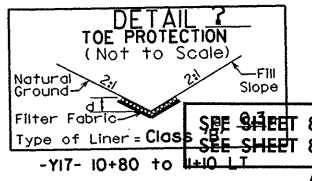
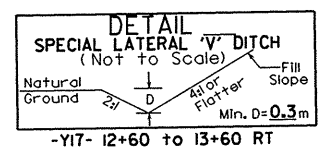
-BY17-
-Y17- STA. 11+24.222
37.765 (LT)

-Y20- PT STA. 10+60.780

-Y20- POT STA. 10+65.000
END CONST.

-Y20- POT STA. 10+74.077

MAINTAIN ALL DRIVEWAY CONNECTIONS
DURING CONSTRUCTION



SEE SHEET 80 FOR -Y17- PROFILE
SEE SHEET 81 FOR -Y20- PROFILE

DE LATERAL
 (Not to Scale)
 Natural Ground
 Filter Fabric
 PGL
 Type of Liner = Class
 -Y17- 10+5
 -Y17- 11+5

SPI
 Natl. Grou.
 Fil. Type

 SYSTEMS
