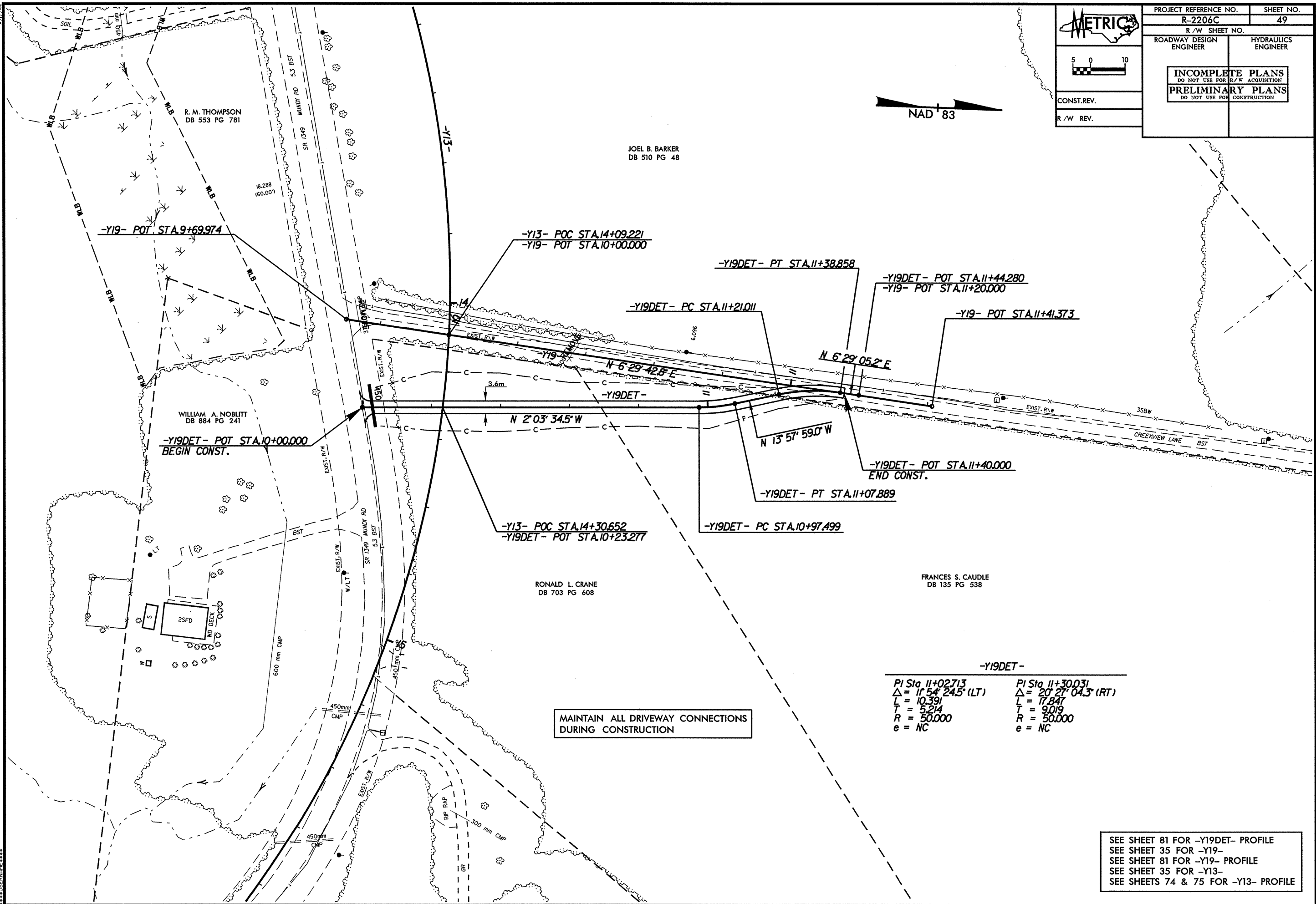
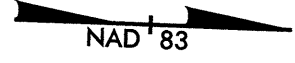
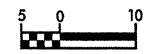


PROJECT REFERENCE NO. R-2206C		SHEET NO. 49	
R/W SHEET NO.			
ROADWAY DESIGN ENGINEER		HYDRAULICS ENGINEER	
INCOMPLETE PLANS DO NOT USE FOR R/W ACQUISITION PRELIMINARY PLANS DO NOT USE FOR CONSTRUCTION			
CONST. REV.			
R/W REV.			



**-Y19DET- POT STA. 10+00.000
BEGIN CONST.**

**-Y19DET- POT STA. 11+40.000
END CONST.**

**MAINTAIN ALL DRIVEWAY CONNECTIONS
DURING CONSTRUCTION**

-Y19DET-

$PI Sta 11+02.713$	$PI Sta 11+30.031$
$\Delta = 1^{\circ}54'24.5'' (LT)$	$\Delta = 20^{\circ}27'04.3'' (RT)$
$L = 10.391$	$L = 17.847$
$T = 5.214$	$T = 9.019$
$R = 50.000$	$R = 50.000$
$e = NC$	$e = NC$

SEE SHEET 81 FOR -Y19DET- PROFILE
 SEE SHEET 35 FOR -Y19- PROFILE
 SEE SHEET 81 FOR -Y13- PROFILE
 SEE SHEET 35 FOR -Y13- PROFILE
 SEE SHEETS 74 & 75 FOR -Y13- PROFILE