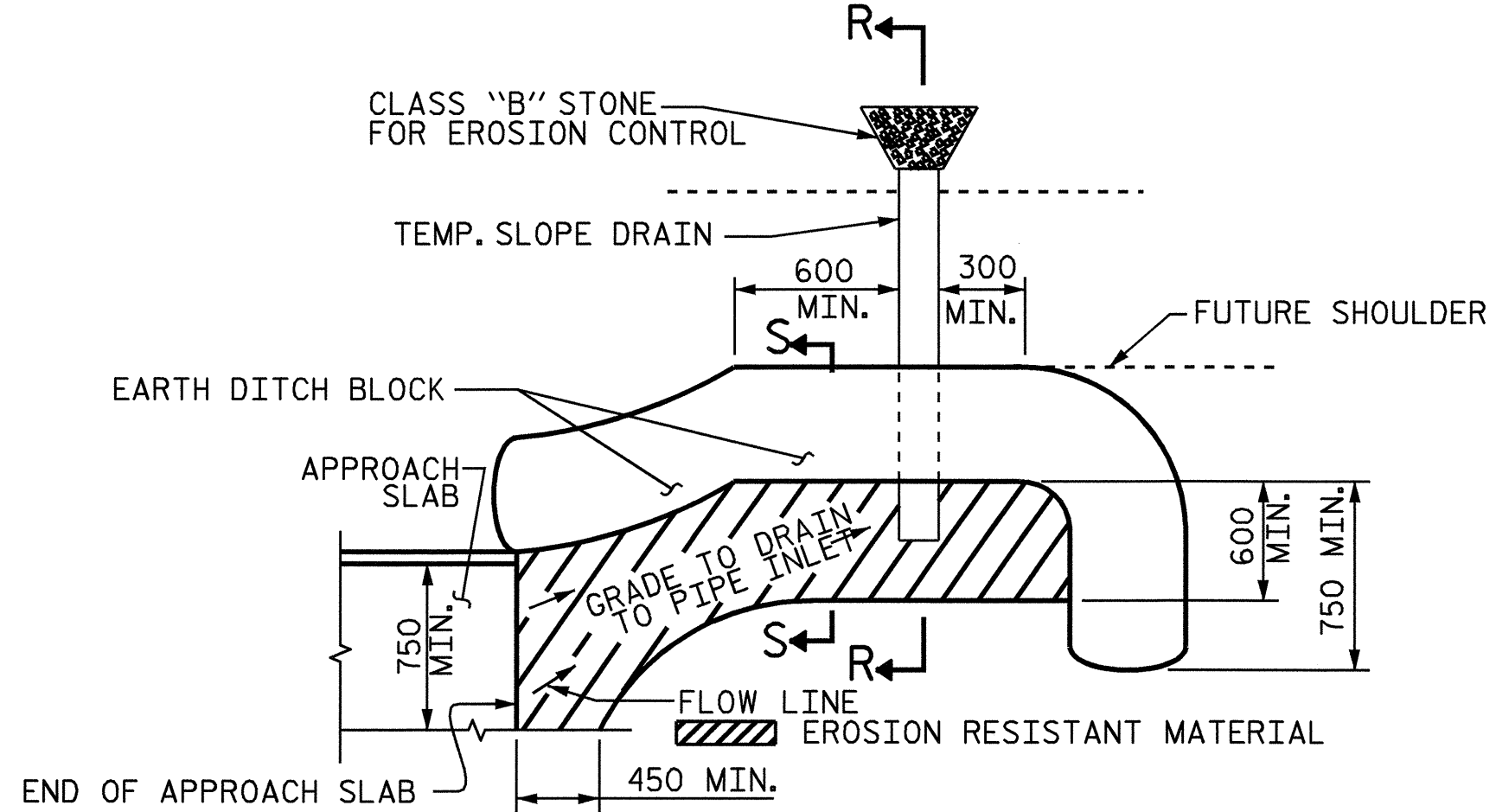
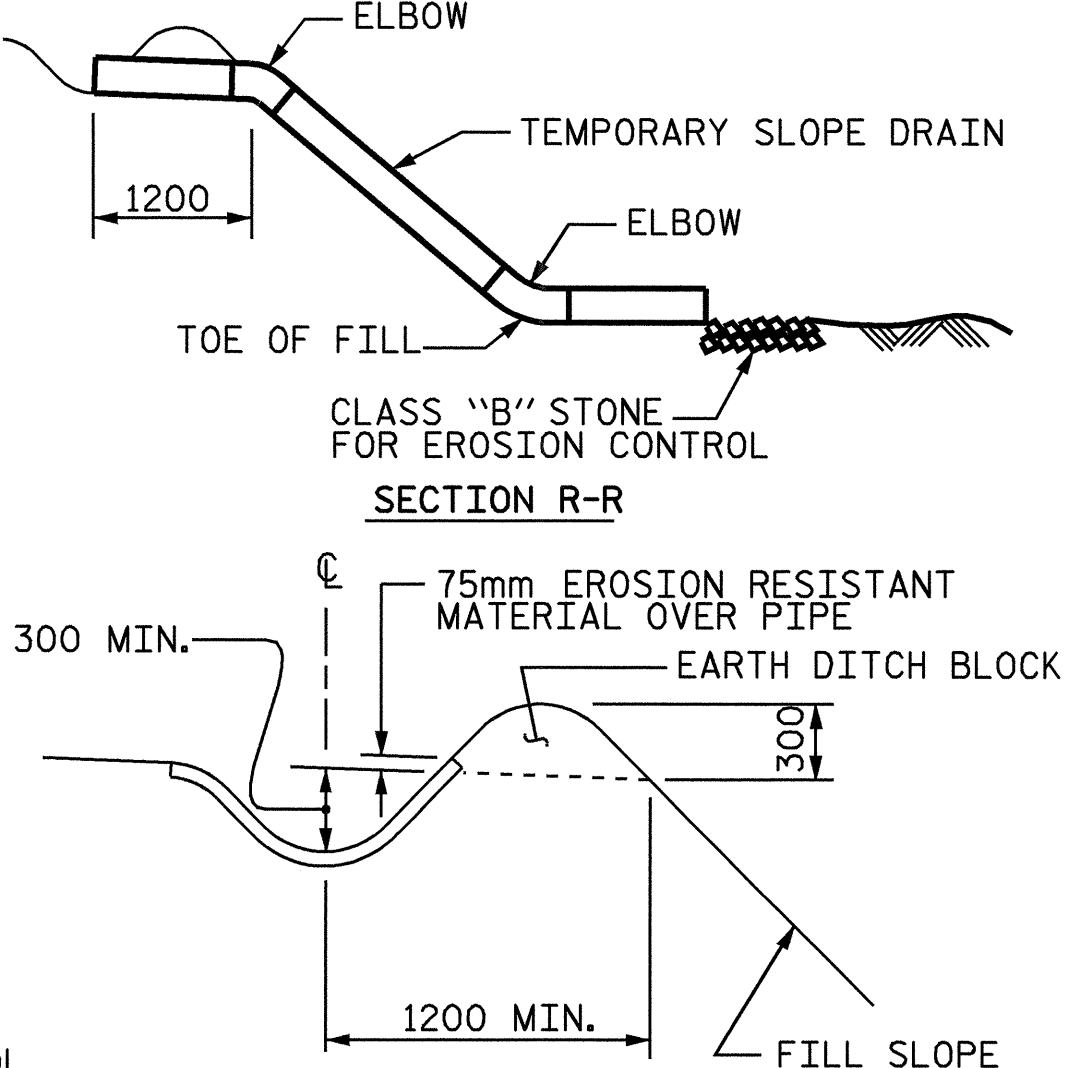


TEMPORARY DRAINAGE DETAIL



PLAN VIEW

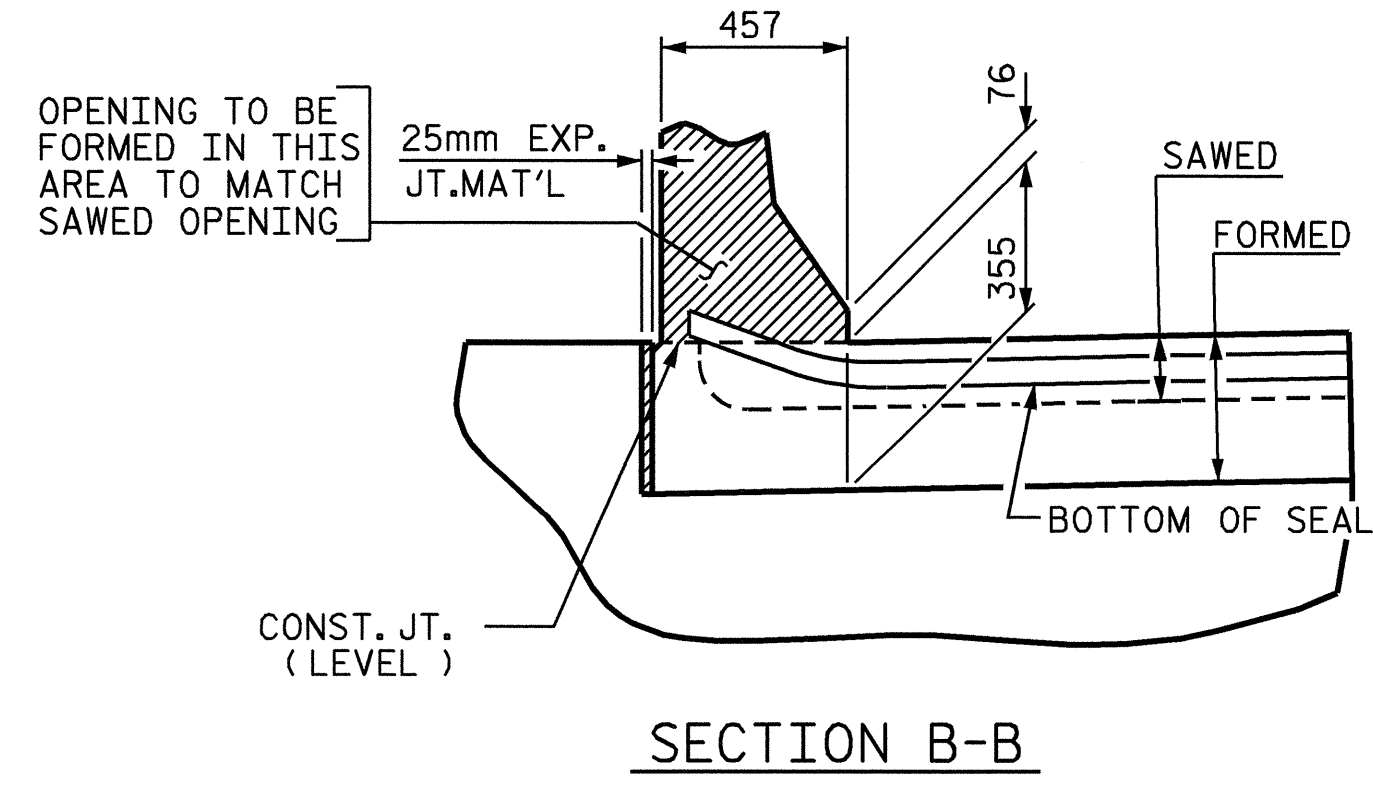
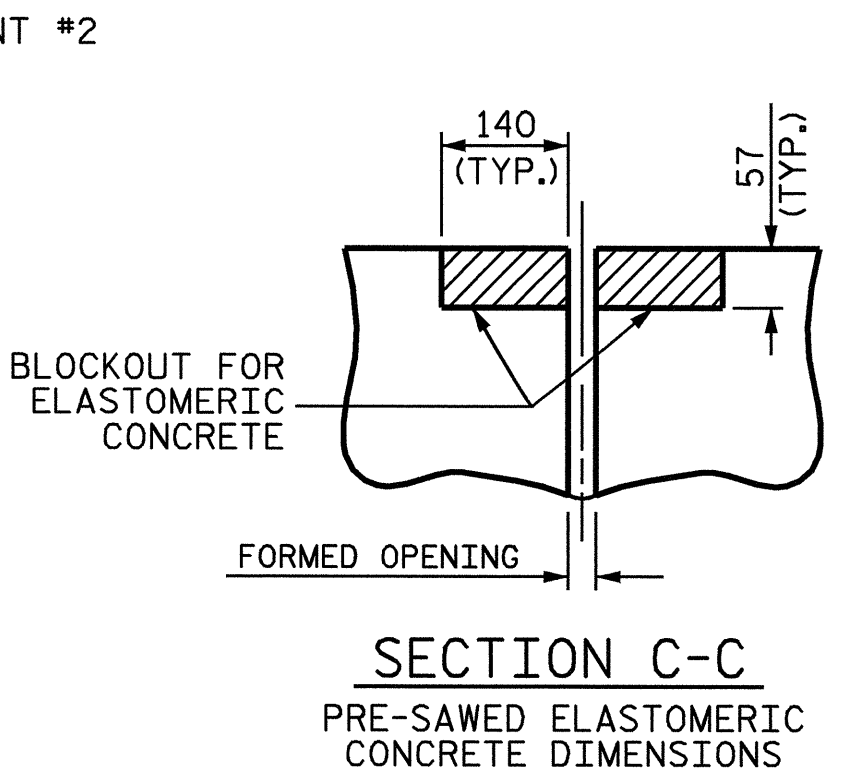
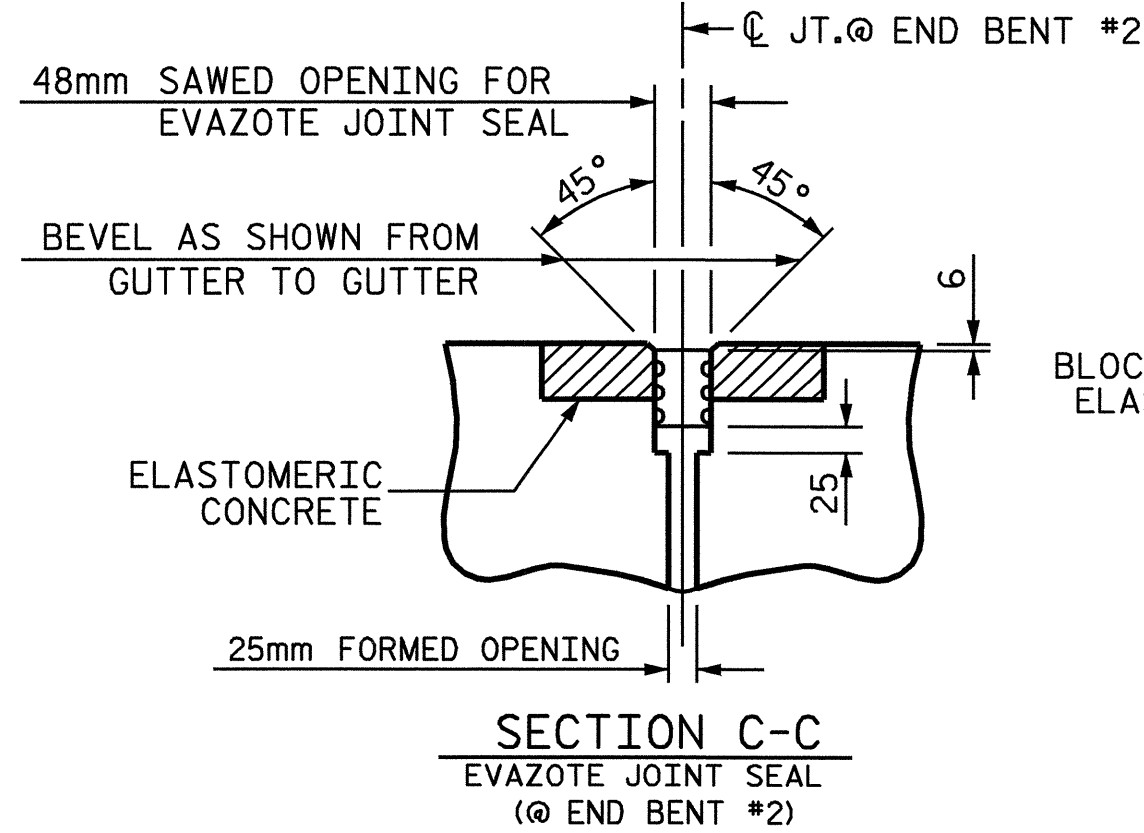
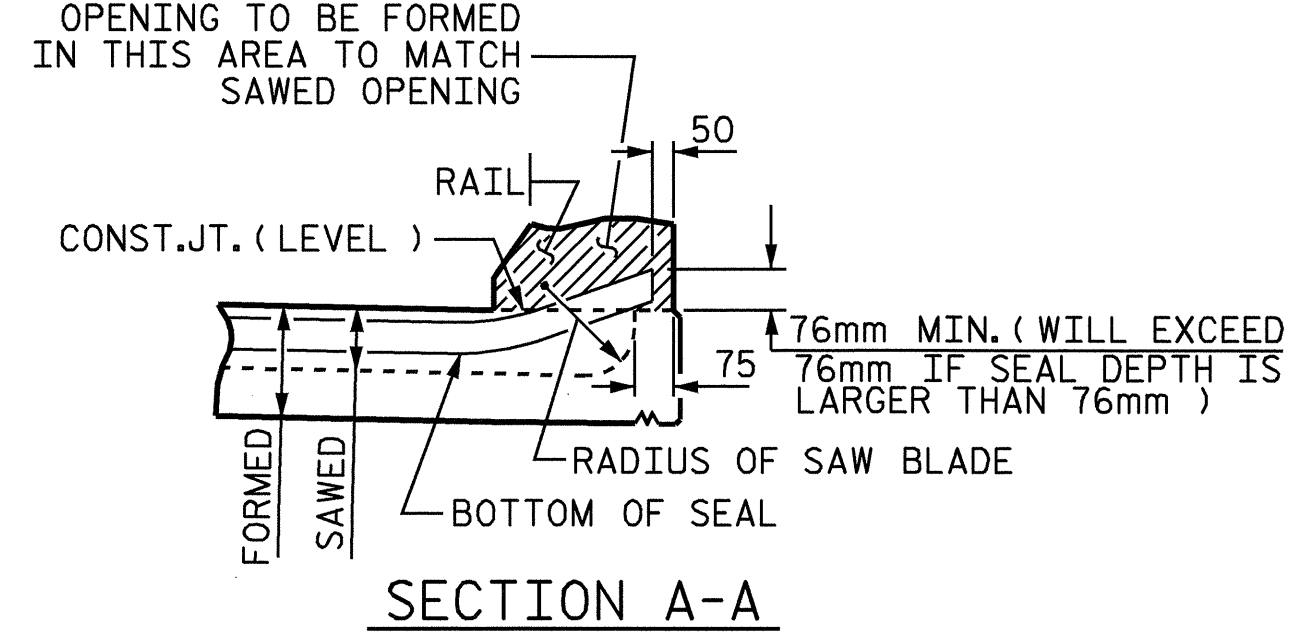
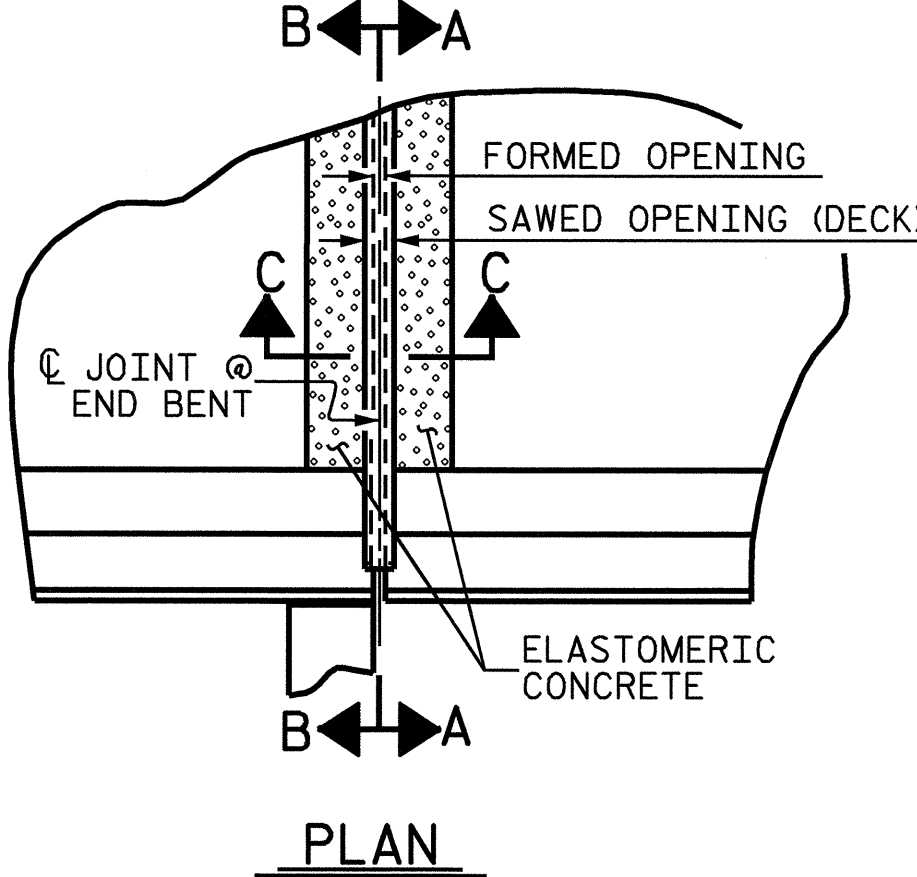
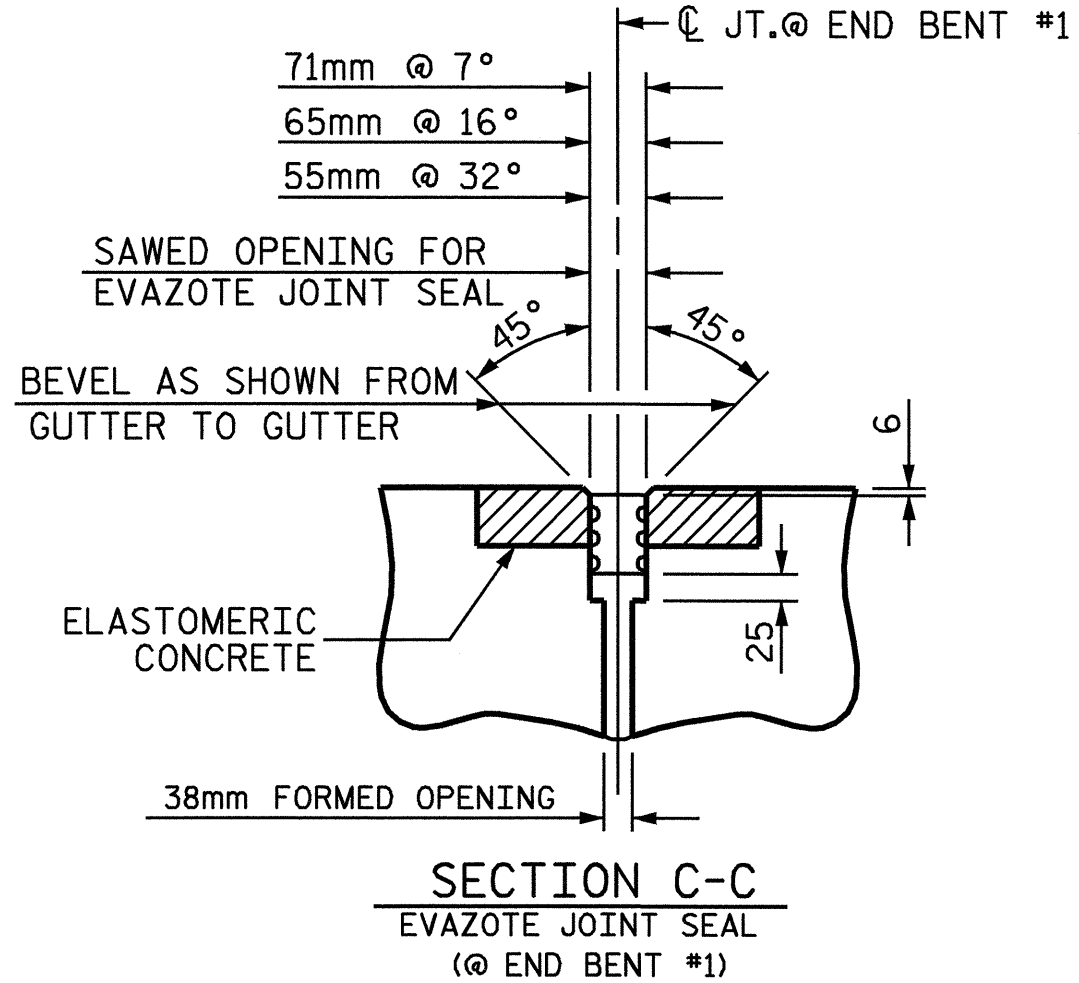
TEMPORARY BERM AND SLOPE DRAIN DETAILS



SECTION R-R

| ELASTOMERIC CONCRETE | |
|----------------------|--------------------------------|
| END BENT NO. | ELASTOMERIC CONCRETE * (CU. m) |
| 1 | 0.17 |
| 2 | 0.17 |
| TOTAL | 0.34 |

* BASED ON THE MINIMUM BLOCKOUT SHOWN.



JOINT SEAL DETAILS @ END BENT

PROJECT NO. R-2206C
LINCOLN-CATAWBA COUNTY
 STATION: 237+97.199 -L-

SHEET 4 OF 4

STATE OF NORTH CAROLINA
 DEPARTMENT OF TRANSPORTATION
 RALEIGH
 STANDARD
 BRIDGE APPROACH
 SLAB DETAILS
 LEFT LANE



| REVISIONS | | | | | | TOTAL SHEETS |
|-----------|-----|-------|-----|-----|-------|--------------|
| NO. | BY: | DATE: | NO. | BY: | DATE: | |
| 1 | | | 3 | | | 324 |
| 2 | | | 4 | | | 324 |

| | |
|-----------------------------|-------------|
| ASSEMBLED BY: W.D. CRUTCHER | DATE: 06-04 |
| CHECKED BY: T.L. AVERETTE | DATE: 06-04 |
| DRAWN BY: FCJ | 11/88 |
| CHECKED BY: ARB | 11/88 |
| REV. 8/16/99 | RAL/LES |
| REV. 10/17/00 | RWW/LES |
| REV. 5/7/03 | RWW/JTE |