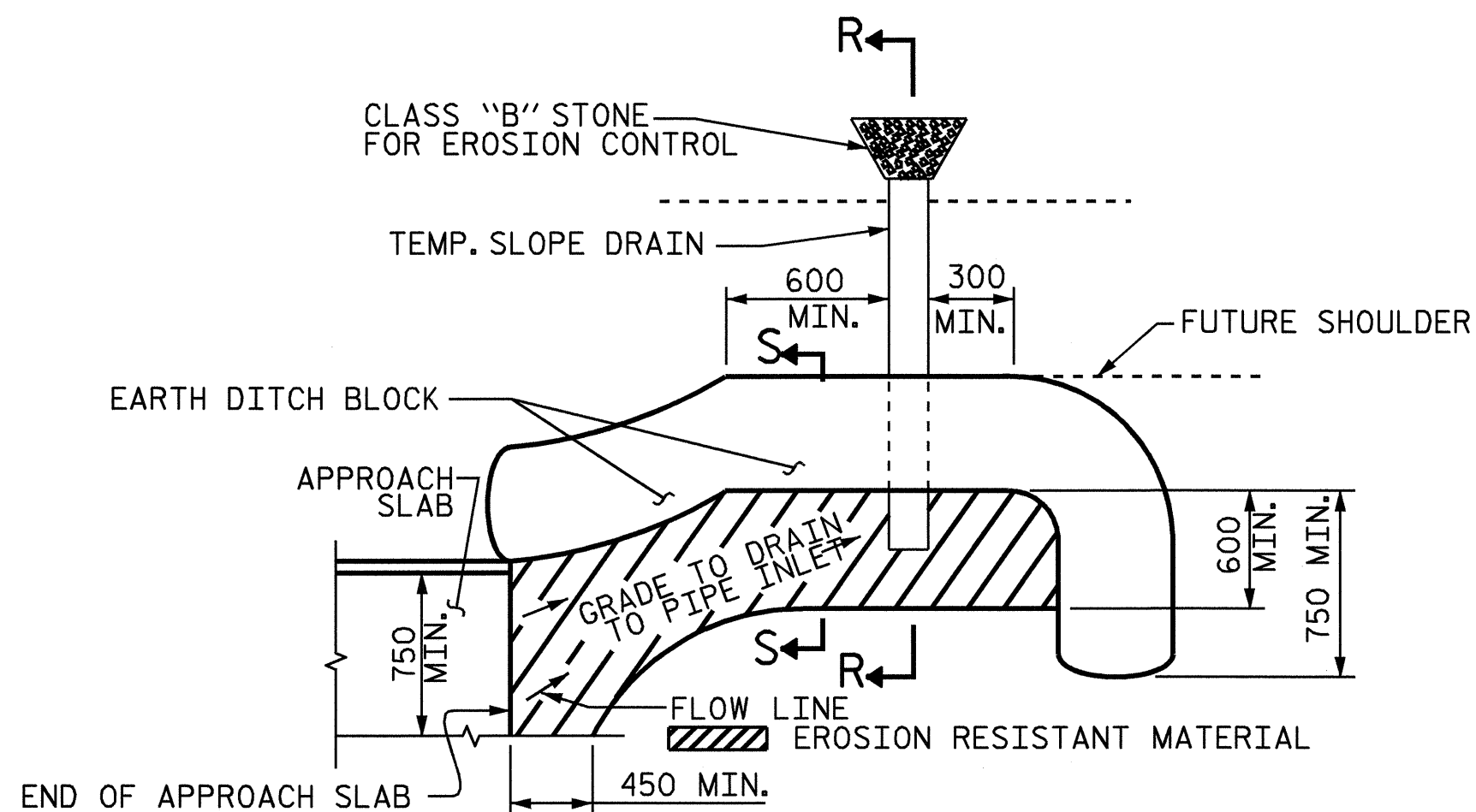


NOTE: IF THE APPROACH SLAB IS NOT CONSTRUCTED IMMEDIATELY AFTER THE BACKFILLING OF THE END BENT EXCAVATION, GRADE TO DRAIN TO THE BOTTOM OF THE SLOPE AND PROVIDE EROSION RESISTANT MATERIAL, SUCH AS FIBERGLASS ROVING OR AS DIRECTED BY THE ENGINEER TO PREVENT SOIL EROSION AND TO PROTECT THE AREA ADJACENT TO THE STRUCTURE. THE CONTRACTOR WILL BE REQUIRED TO REMOVE THESE MATERIALS PRIOR TO CONSTRUCTION OF THE APPROACH SLAB.

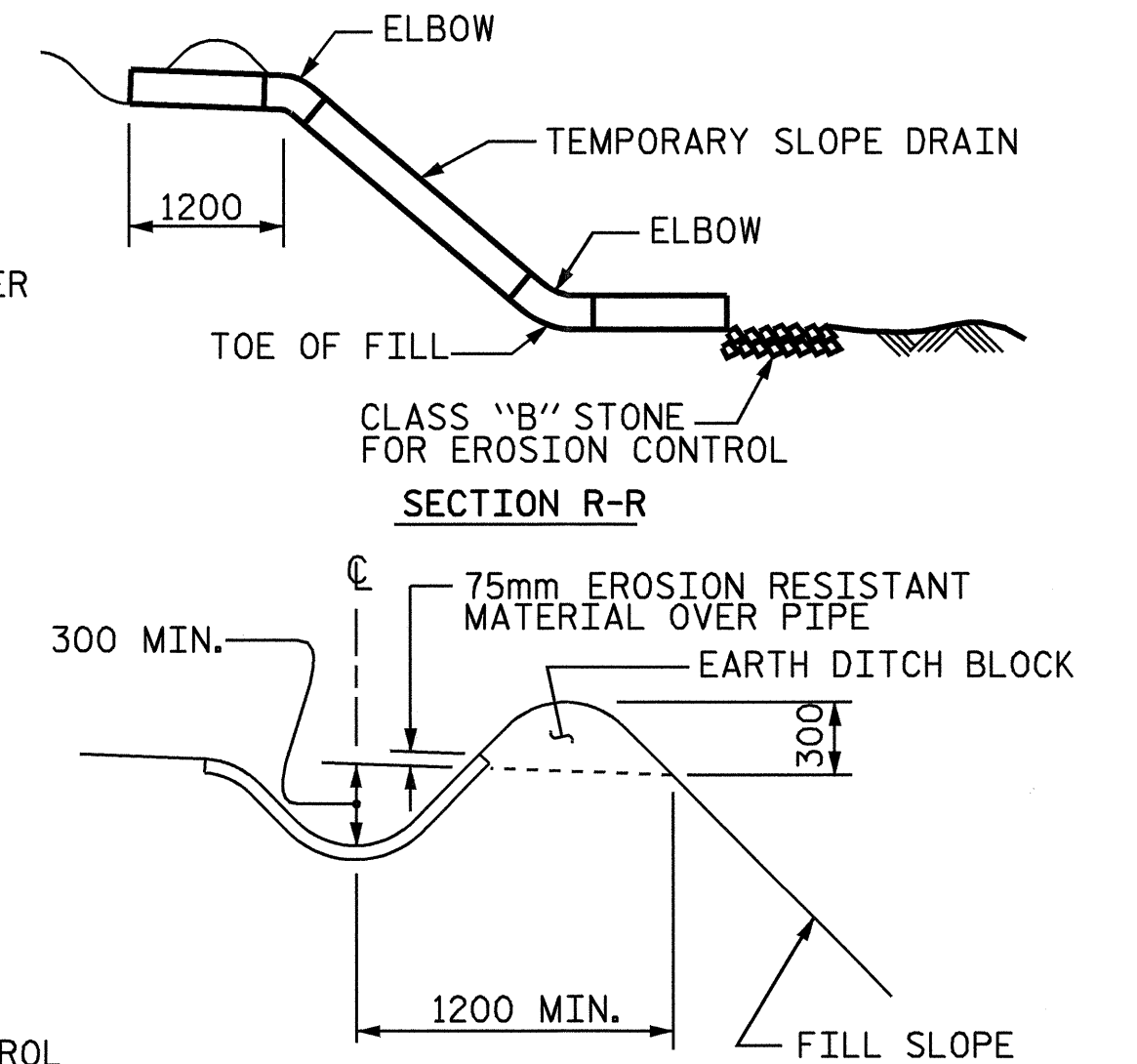
TEMPORARY DRAINAGE DETAIL



NOTE: IMMEDIATELY AFTER THE CONSTRUCTION OF THE APPROACH SLAB, THE CONTRACTOR SHALL PROVIDE TEMPORARY BERM AND SLOPE DRAIN. CONTRACTOR SHALL GRADE TO PIPE INLET AND PROVIDE EROSION RESISTANT MATERIAL AS SHOWN. THE EROSION RESISTANT MATERIAL SHALL BE EITHER 1) ASPHALT PLANT MIX, TYPE 1 OR TYPE 2, MIN. 50mm DEPTH, 2) EROSION CONTROL MAT, OR 3) CONCRETE, AS DIRECTED BY THE ENGINEER. THE SLOPE DRAIN SHALL CONSIST OF A NON-PERFORATED TEMPORARY DRAINAGE PIPE, 305mm IN DIAMETER.

PLAN VIEW

TEMPORARY BERM AND SLOPE DRAIN DETAILS

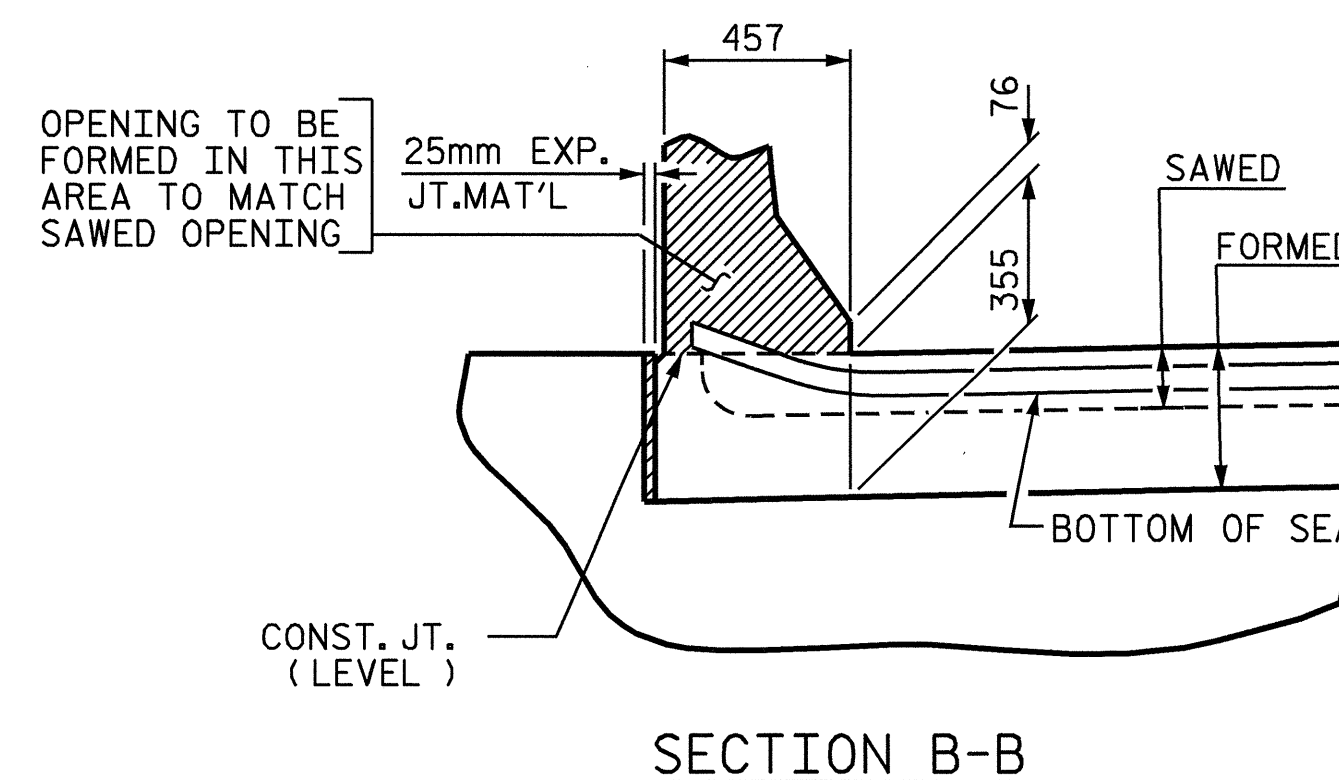
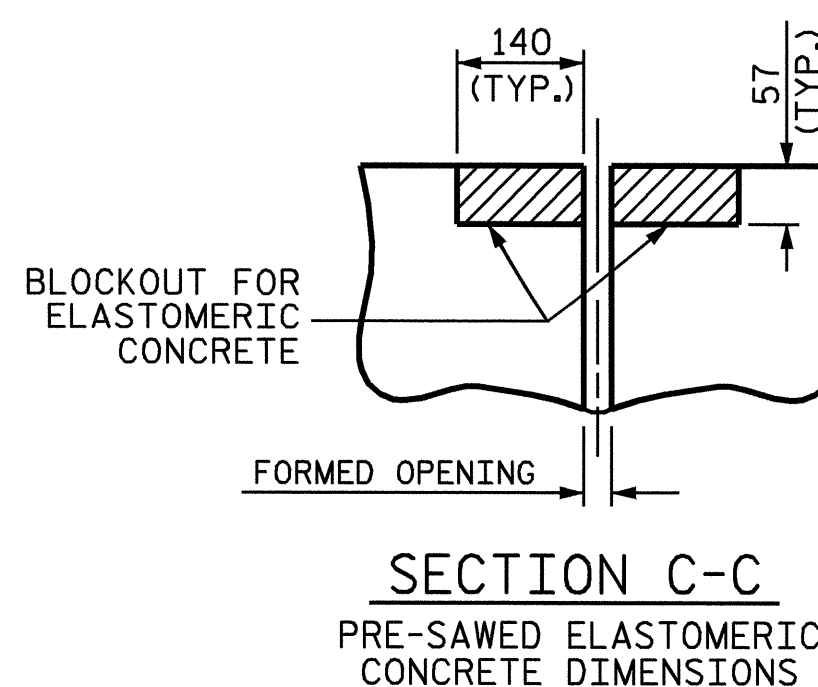
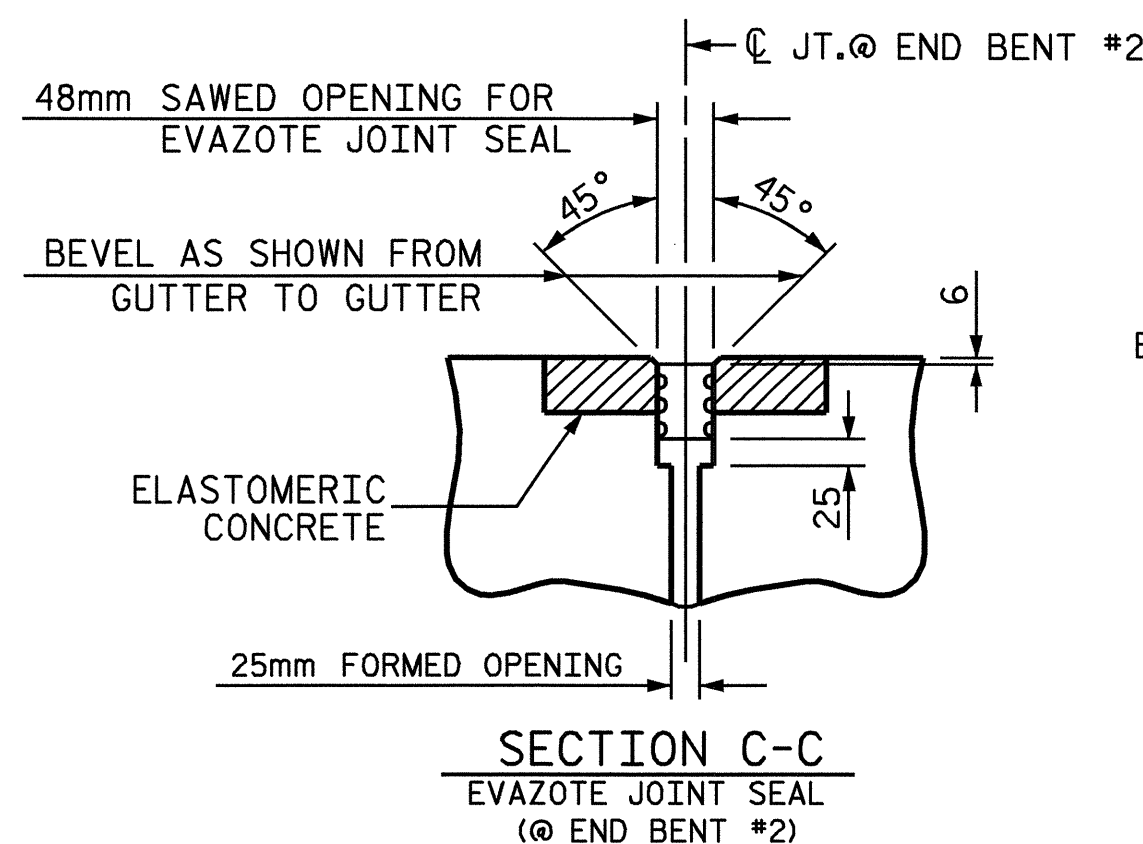
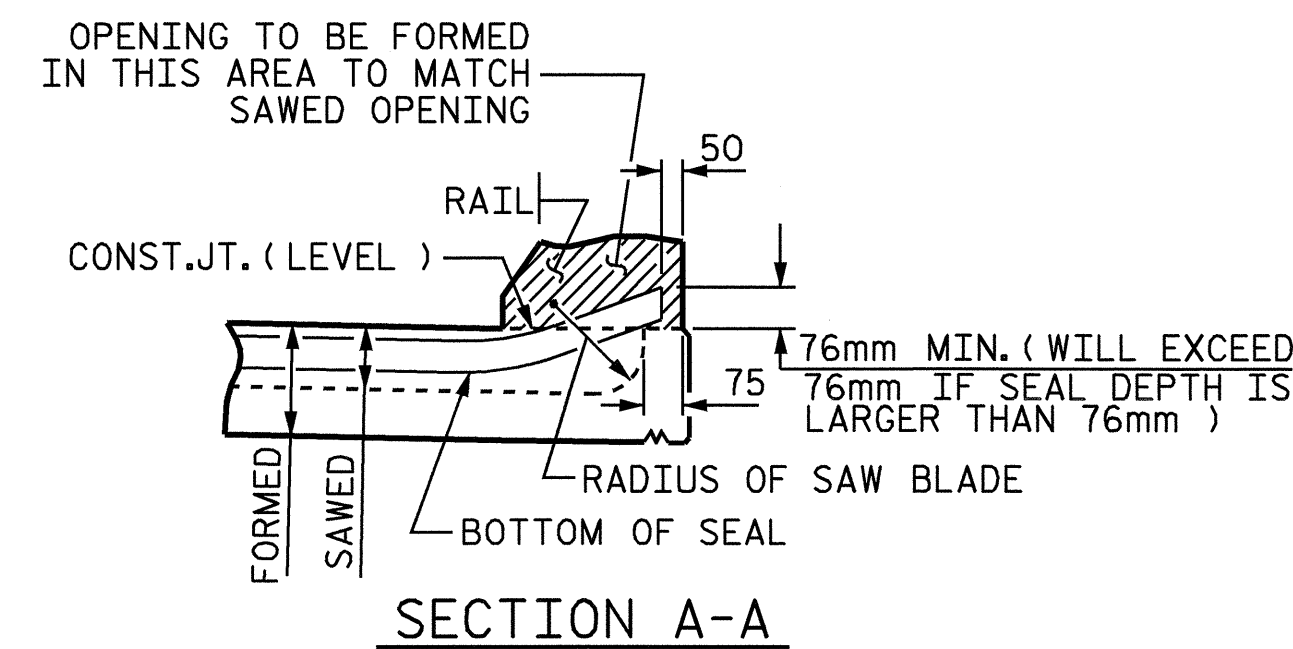
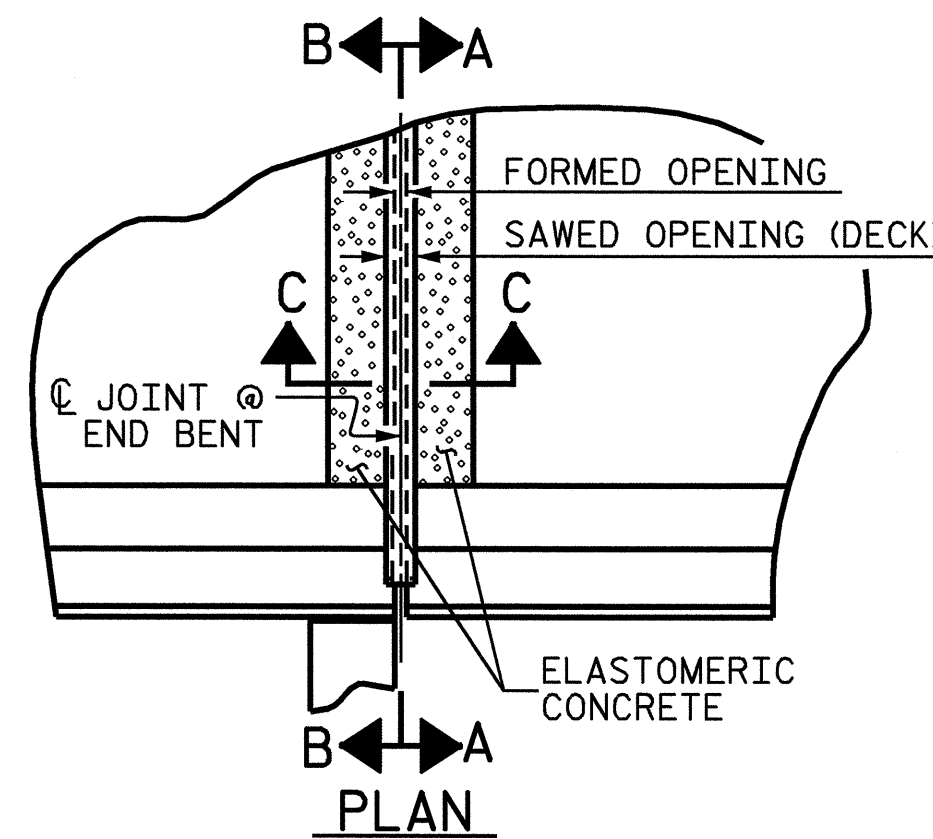
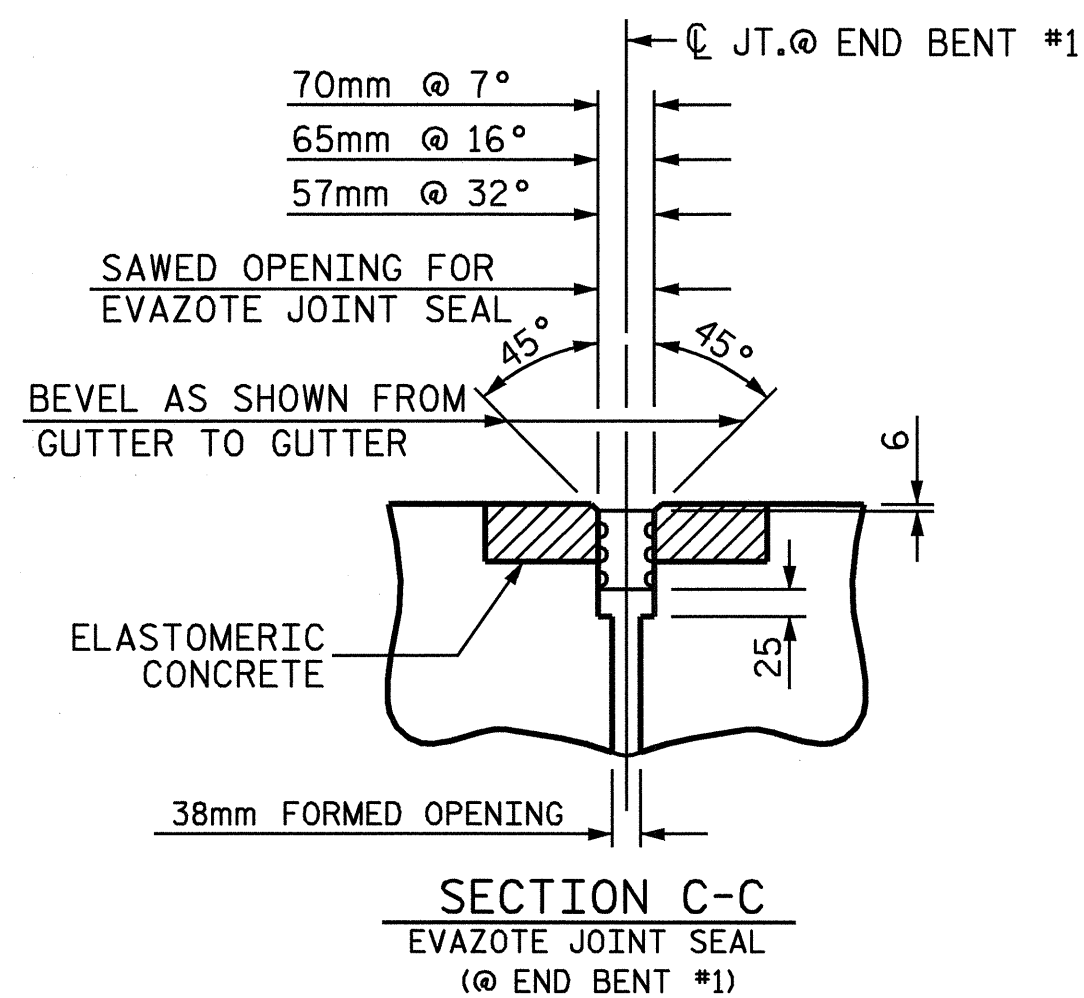


SECTION S-S

ELASTOMERIC CONCRETE

END BENT NO.	ELASTOMERIC CONCRETE * (CU. m)
1	0.17
2	0.17
TOTAL	0.34

* BASED ON THE MINIMUM BLOCKOUT SHOWN.



JOINT SEAL DETAILS @ END BENT

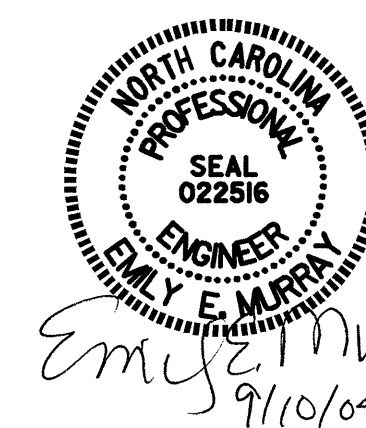
PROJECT NO. R-2206C
LINCOLN-CATAWBA COUNTY
 STATION: 237+97.199 -L-

SHEET 4 OF 4

STATE OF NORTH CAROLINA
 DEPARTMENT OF TRANSPORTATION
 RALEIGH

**STANDARD
 BRIDGE APPROACH
 SLAB DETAILS**

RIGHT LANE



ASSEMBLED BY: W.D. CRUTCHER DATE: 06-04
 CHECKED BY: T.L. AVERETTE DATE: 06-04
 DRAWN BY: FCJ 11/88 REV. 8/16/99 RAL/LES
 CHECKED BY: ARB 11/88 REV. 10/17/00 RWW/LES
 REV. 5/7/03 RWW/JTE

REVISIONS						TOTAL SHEETS
NO.	BY:	DATE:	NO.	BY:	DATE:	374
1			3			
2			4			