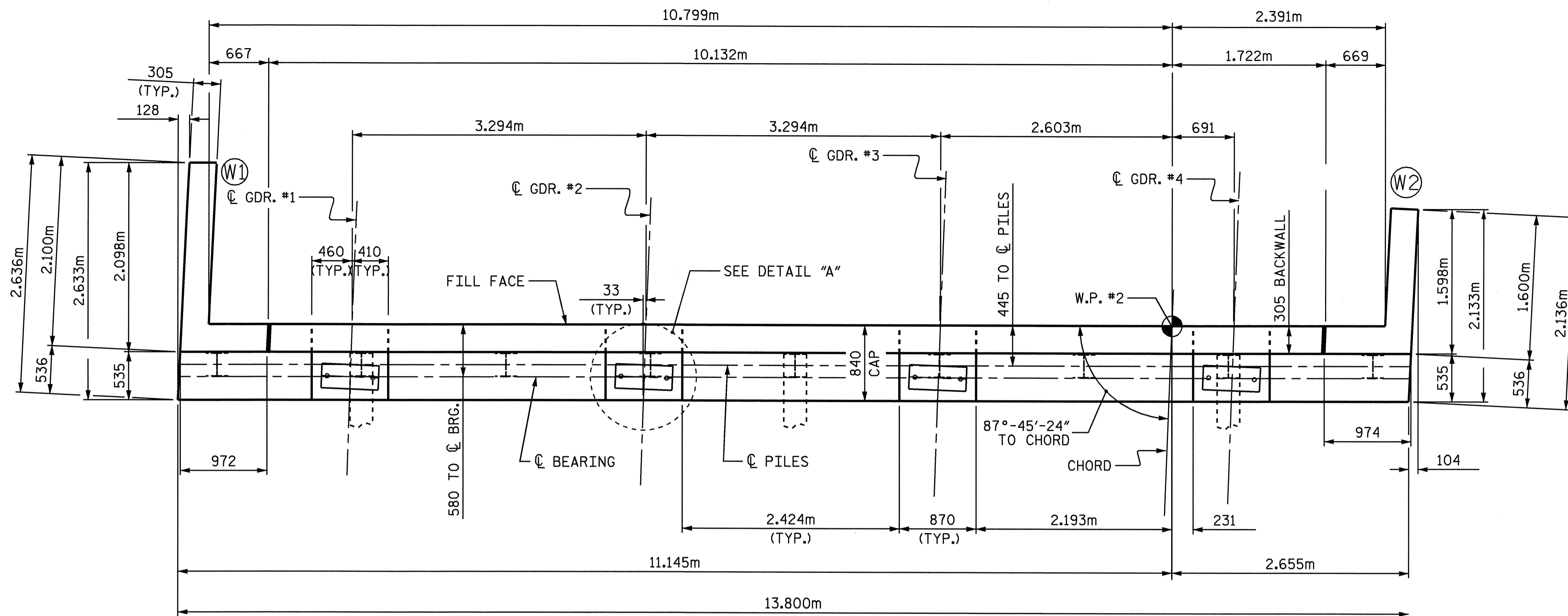
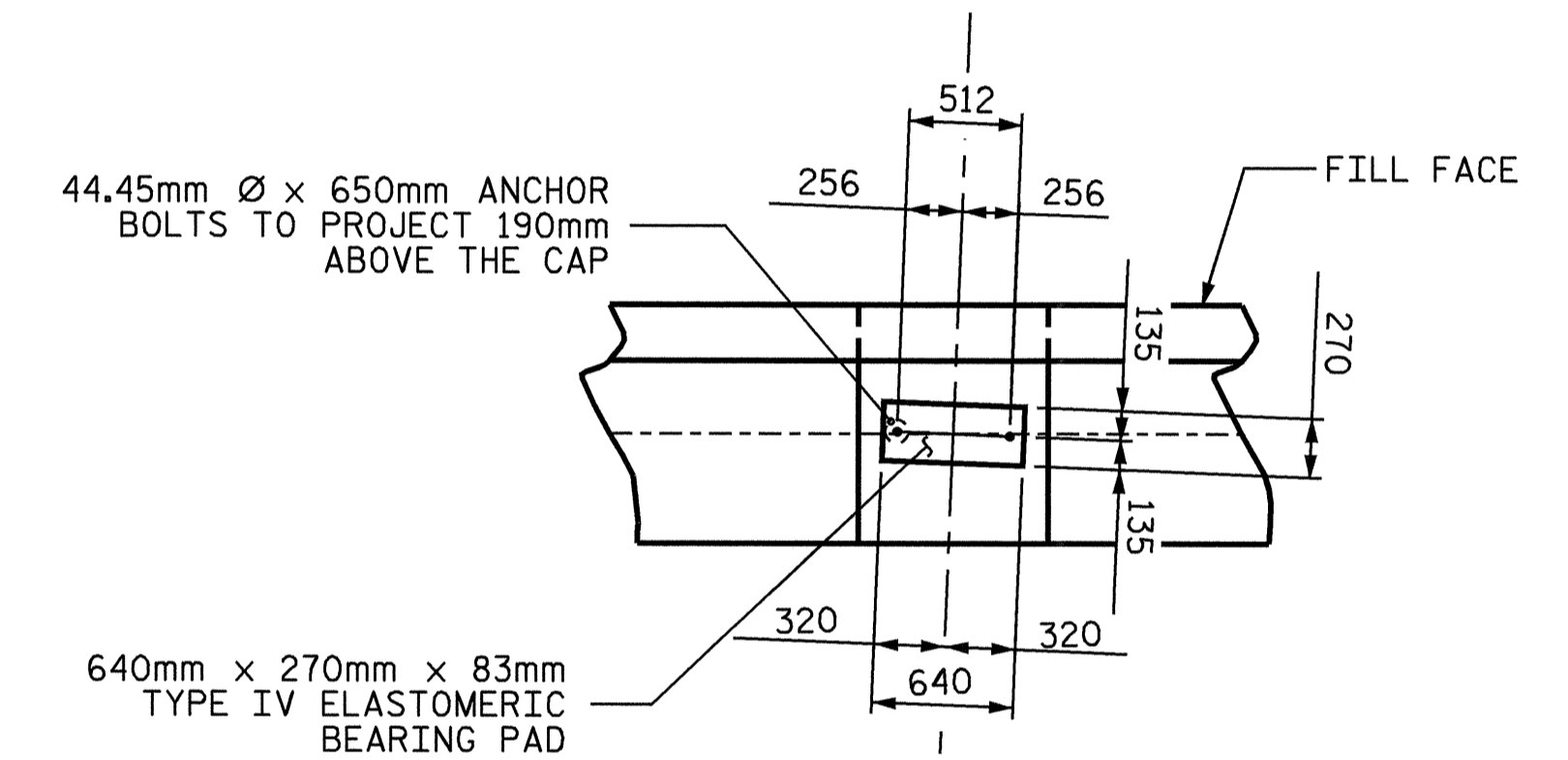


**NOTES**

- STIRRUPS IN CAP MAY BE SHIFTED AS NECESSARY TO CLEAR ANCHOR BOLTS.
- BACKWALL SHALL BE PLACED BEFORE APPLYING THE EPOXY PROTECTIVE COATING.
- FOR EPOXY PROTECTIVE COATING, SEE SPECIAL PROVISIONS.
- THE TOP SURFACE OF THE END BENT CAP EXCEPT THE BRIDGE SEAT BUILDUPS SHALL BE SLOPED TRANSVERSELY FROM THE FILL FACE TO THE BACK FACE AT THE RATE OF 2%.
- THE TOP SURFACE AREAS OF THE END BENT CAPS SHALL BE CURED IN ACCORDANCE WITH THE STANDARD SPECIFICATIONS EXCEPT THE MEMBRANE CURING COMPOUND METHOD SHALL NOT BE USED.
- THE CONTRACTOR SHALL PROVIDE FOR INSTALATION OF THE 102mm DIAMETER DRAIN PIPE THROUGH THE WING WALL AS REQUIRED FOR REINFORCED BRIDGE APPROACH FILLS, SEE THE ROADWAY PLANS. REINFORCING STEEL IN THE WING WALL MAY BE SHIFTED AS NECESSARY TO CLEAR THE DRAIN PIPE.

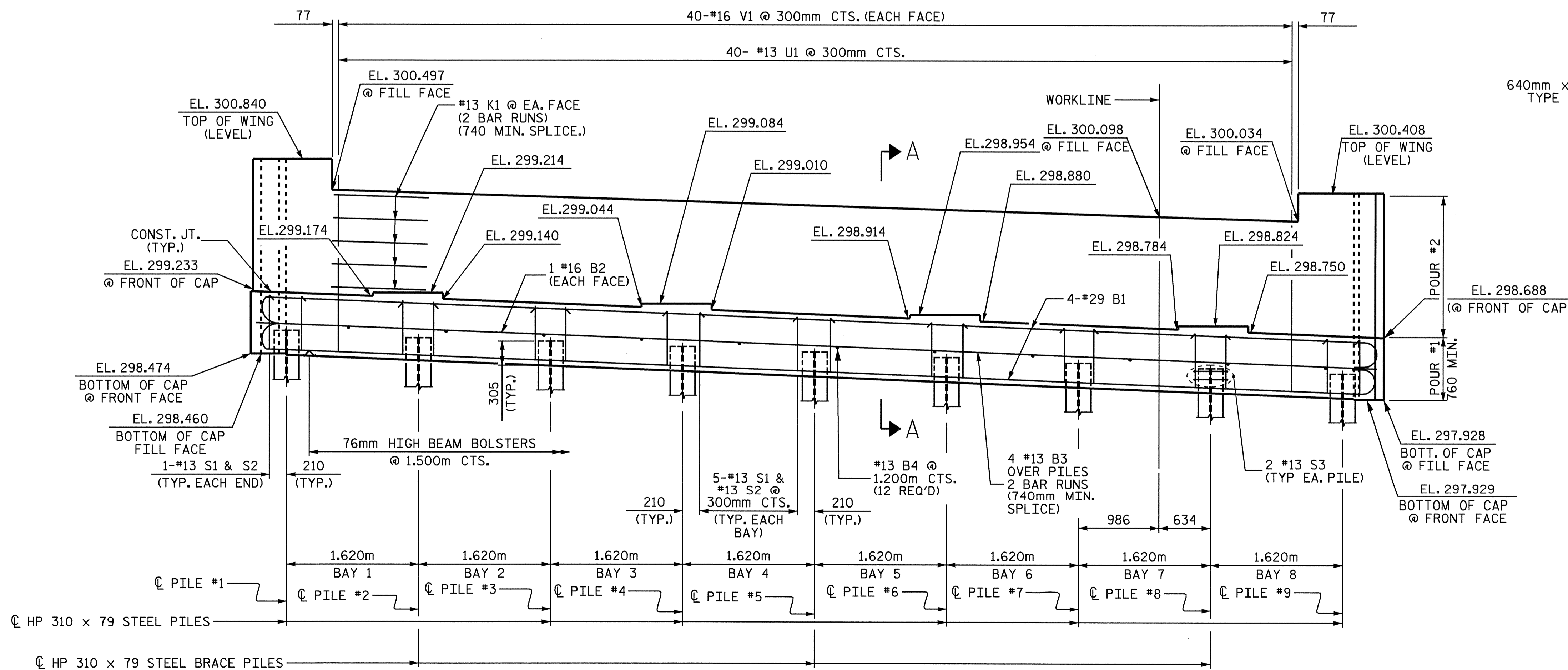


**PLAN**



**DETAIL "A"**

TOP OF PILE ELEVATION	
PILE	ELEVATION
1	298.768
2	298.704
3	298.640
4	298.576
5	298.512
6	298.448
7	298.384
8	298.320
9	298.256



**ELEVATION**

PROJECT NO. R-2206C  
 LINCOLN-CATAWBA COUNTY  
 STATION: 245+91.502 -L-

SHEET 1 OF 3

STATE OF NORTH CAROLINA  
 DEPARTMENT OF TRANSPORTATION  
 RALEIGH

SUBSTRUCTURE  
 END BENT #2  
 LEFT LANE



REVISIONS						SHEET NO.
NO.	BY:	DATE:	NO.	BY:	DATE:	TOTAL SHEETS
1			3			8-270
2			4			374

DRAWN BY: ZION J. RORIE DATE: 6/22/04  
 CHECKED BY: M. RORIE DATE: 7/6/04

09-SEP-2004 08:08  
 W:\squadq\2206c\Final Plans\Str. 5\R2206C.sd\_EB\_05.dgn  
 padklns