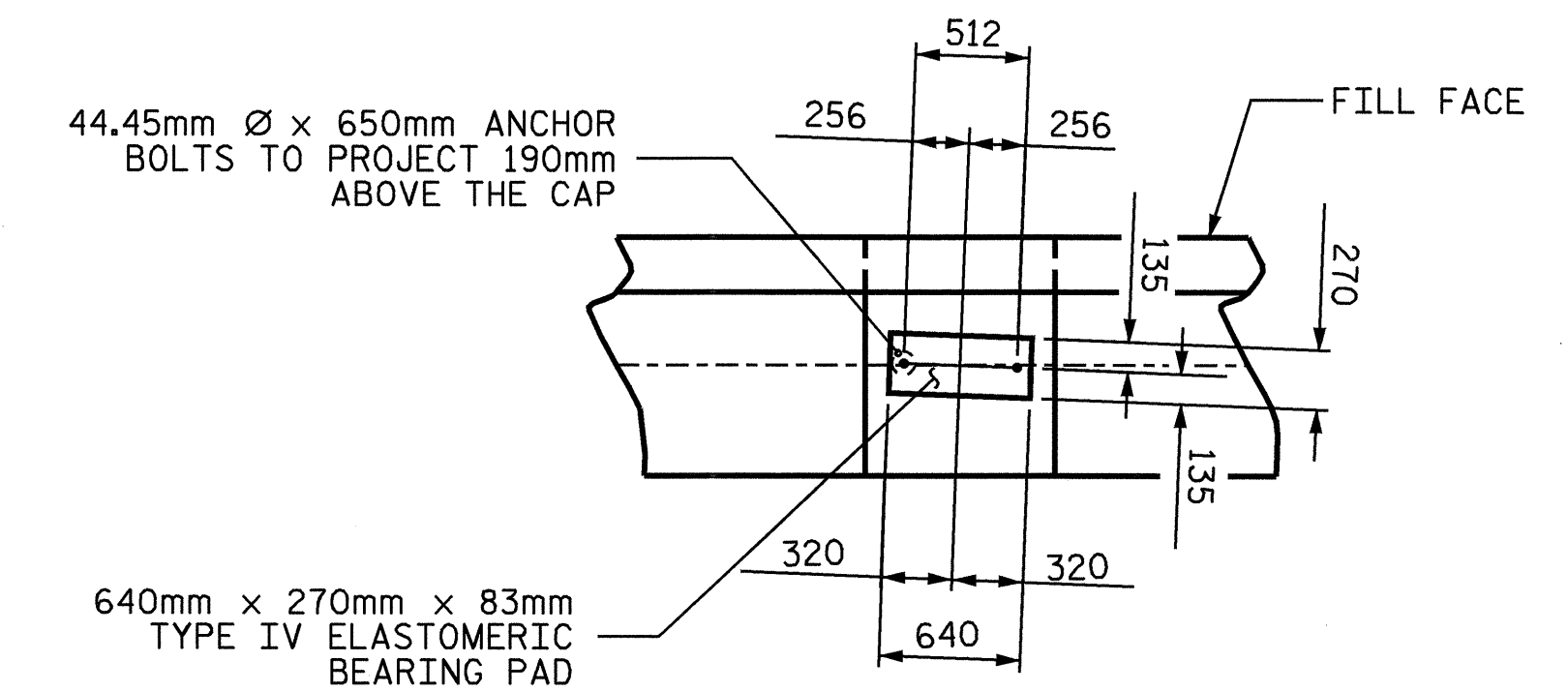


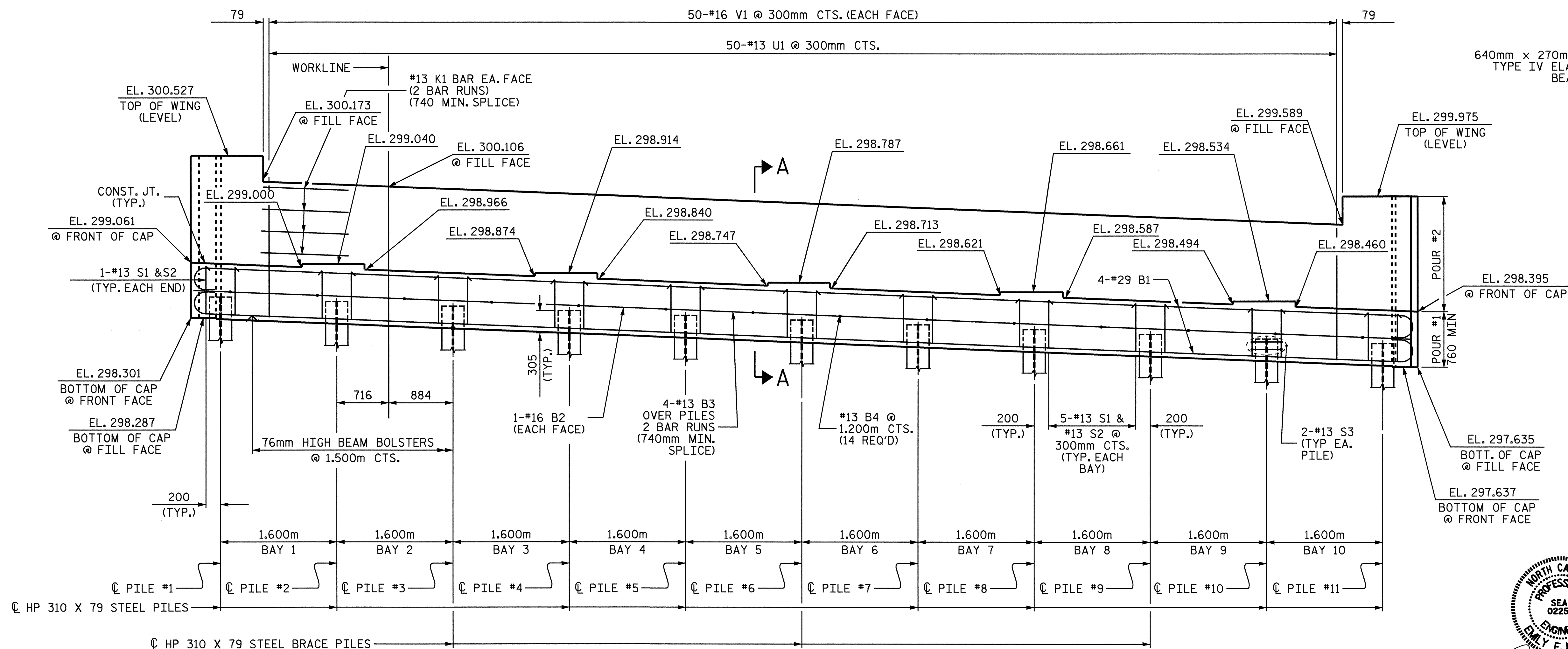
PLAN

NOTES

- STIRRUPS IN CAP MAY BE SHIFTED AS NECESSARY TO CLEAR ANCHOR BOLTS.
- BACKWALL SHALL BE PLACED BEFORE APPLYING THE EPOXY PROTECTIVE COATING.
- FOR EPOXY PROTECTIVE COATING, SEE SPECIAL PROVISIONS.
- THE TOP SURFACE OF THE END BENT CAP EXCEPT THE BRIDGE SEAT BUILDUPS SHALL BE SLOPED TRANSVERSELY FROM THE FILL FACE TO THE BACK FACE AT THE RATE OF 2%.
- THE TOP SURFACE AREAS OF THE END BENT CAPS SHALL BE CURED IN ACCORDANCE WITH THE STANDARD SPECIFICATIONS EXCEPT THE MEMBRANE CURING COMPOUND METHOD SHALL NOT BE USED
- THE CONTRACTOR SHALL PROVIDE FOR INSTALATION OF THE 102mm DIAMETER DRAIN PIPE THROUGH THE WING WALL AS REQUIRED FOR REINFORCED BRIDGE APPROACH FILLS, SEE THE ROADWAY PLANS. REINFORCING STEEL IN THE WING WALL MAY BE SHIFTED AS NECESSARY TO CLEAR THE DRAIN PIPE.



DETAIL "A"



ELEVATION

PILE	ELEVATION
1	298.595
2	298.532
3	298.469
4	298.406
5	298.343
6	298.279
7	298.216
8	298.153
9	298.090
10	298.027
11	297.964

PROJECT NO. R-2206C
 LINCOLN-CATAWBA COUNTY
 STATION: 245+91.502 -L-

SHEET 1 OF 3

STATE OF NORTH CAROLINA
 DEPARTMENT OF TRANSPORTATION
 RALEIGH

SUBSTRUCTURE
 END BENT #2
 RIGHT LANE

REVISIONS						SHEET NO.
NO.	BY:	DATE:	NO.	BY:	DATE:	3-295
1			3			TOTAL SHEETS 374
2			4			



DRAWN BY: ZION J. RORIE DATE: 7/16/04
 CHECKED BY: C. MILLER DATE: 7/22/04

09-SEP-2004 07:38
 W:\sq\ddq\2206e\Final Plans\Str. 6\R2206C_sd.EB.06.dgn
 darutcher