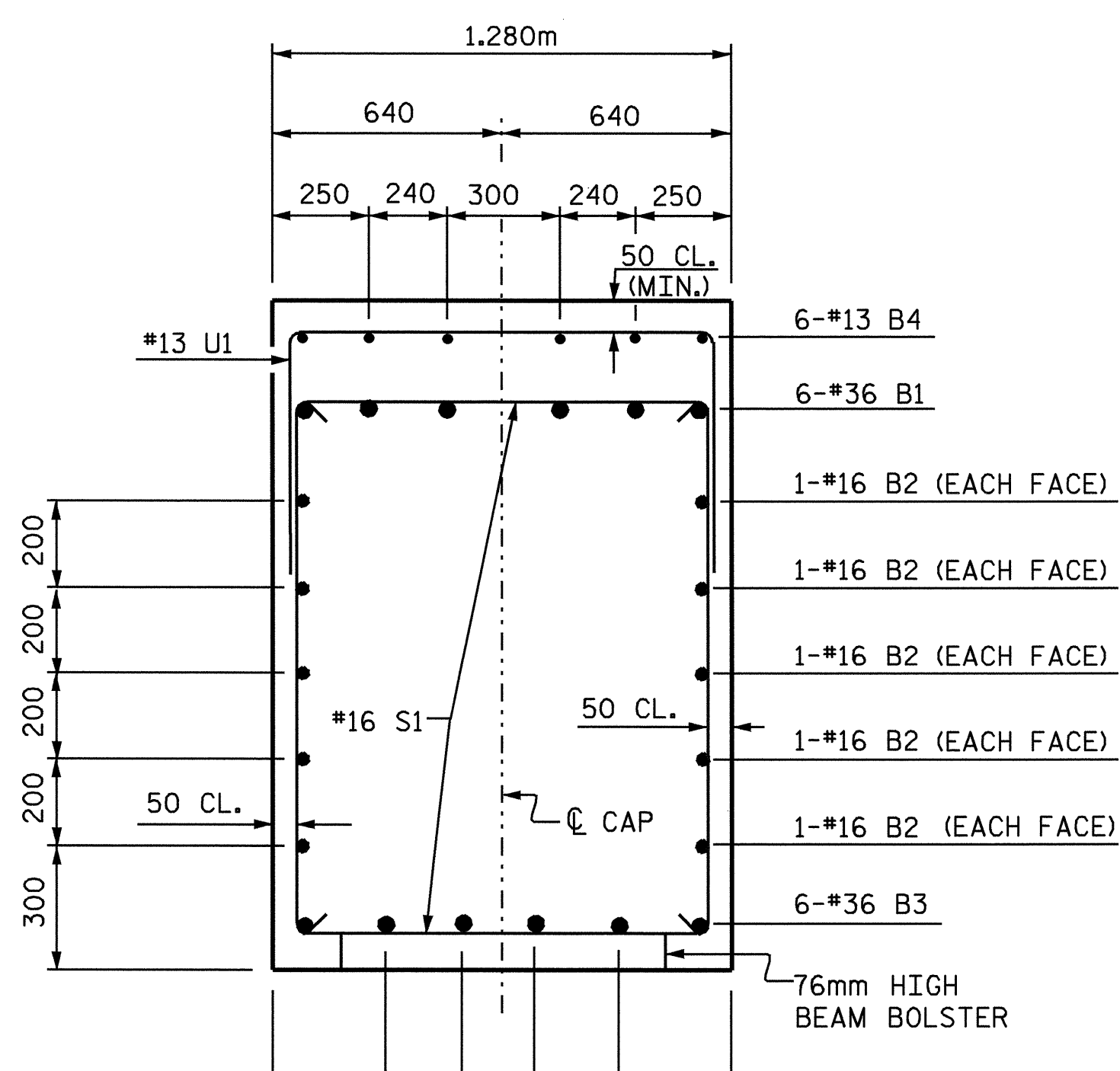
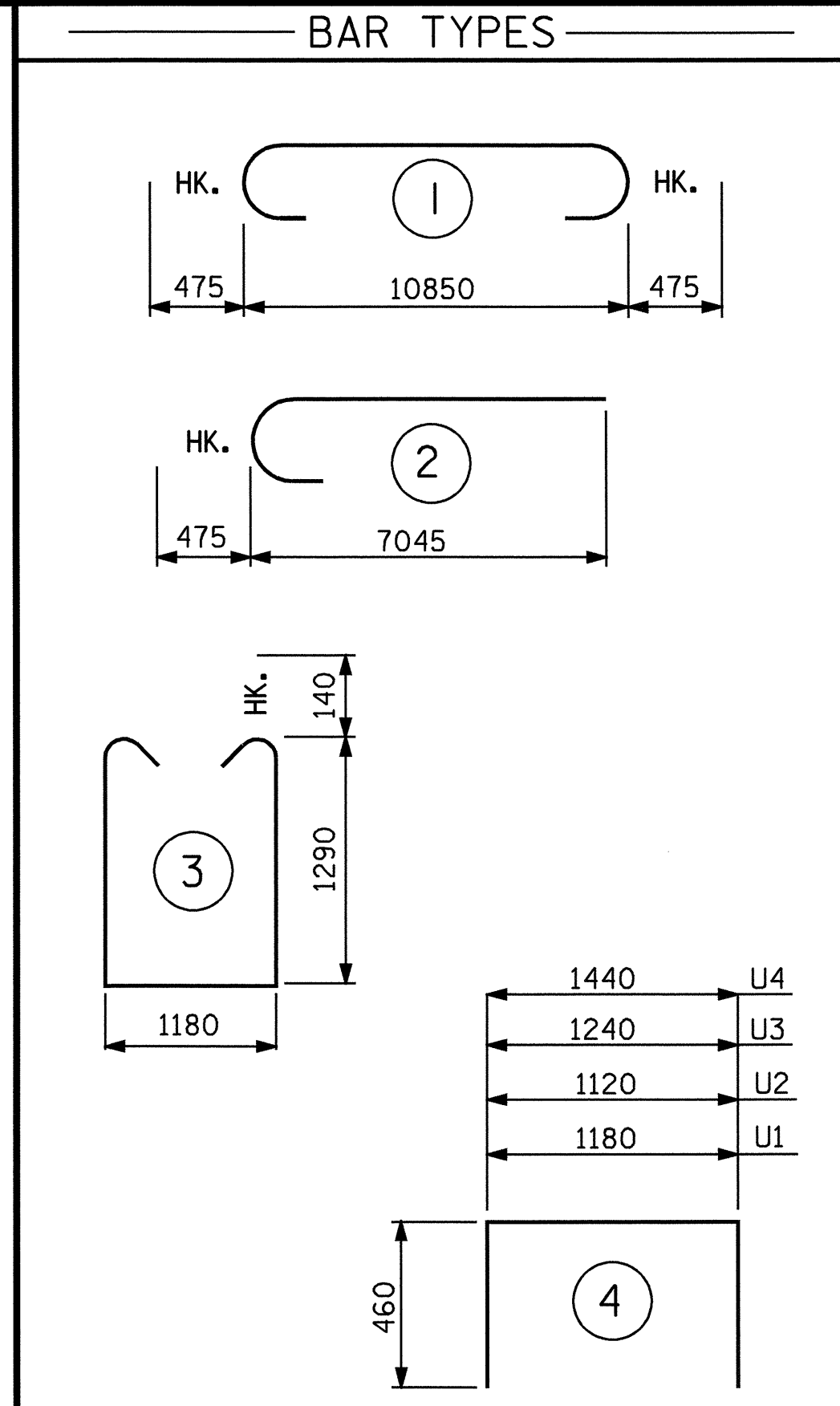


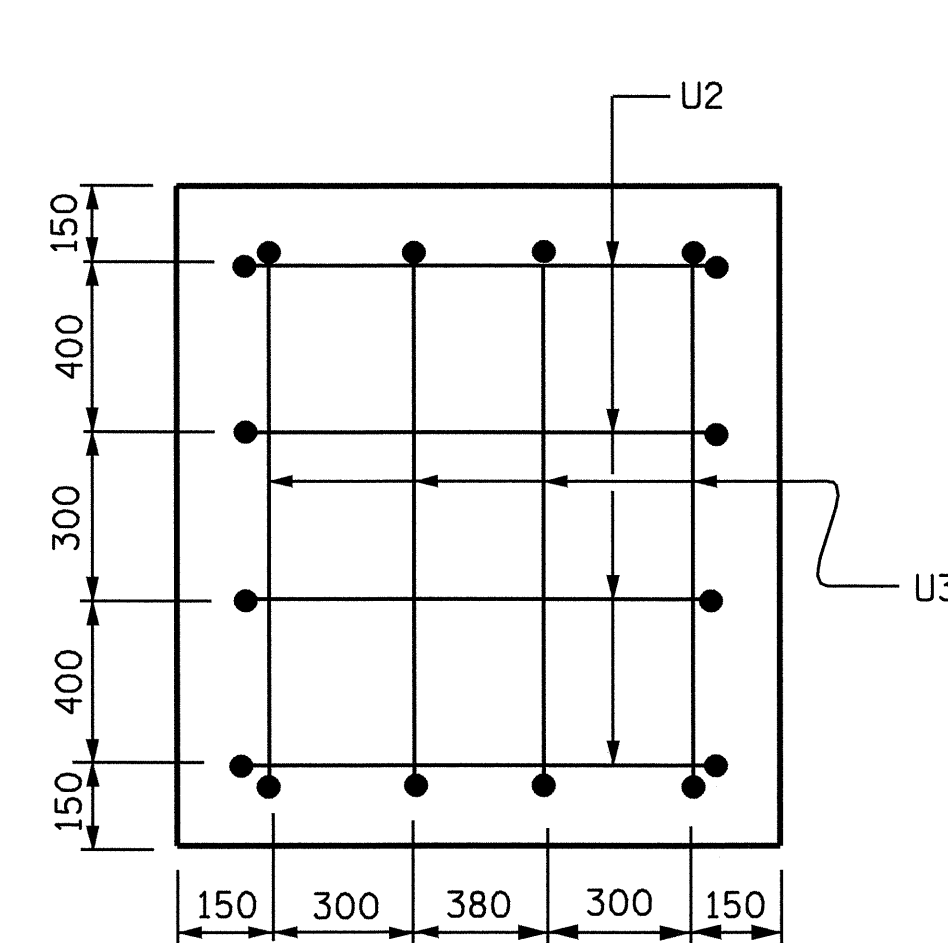
SECTION A-A



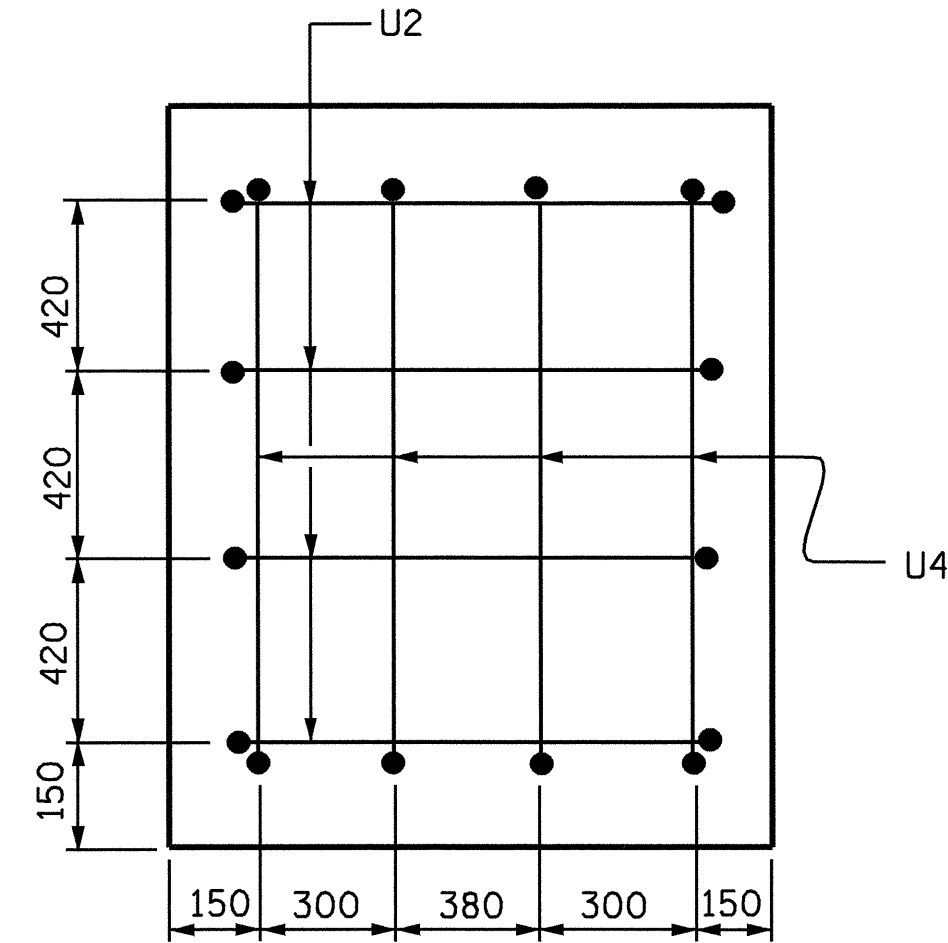
SECTION B-B



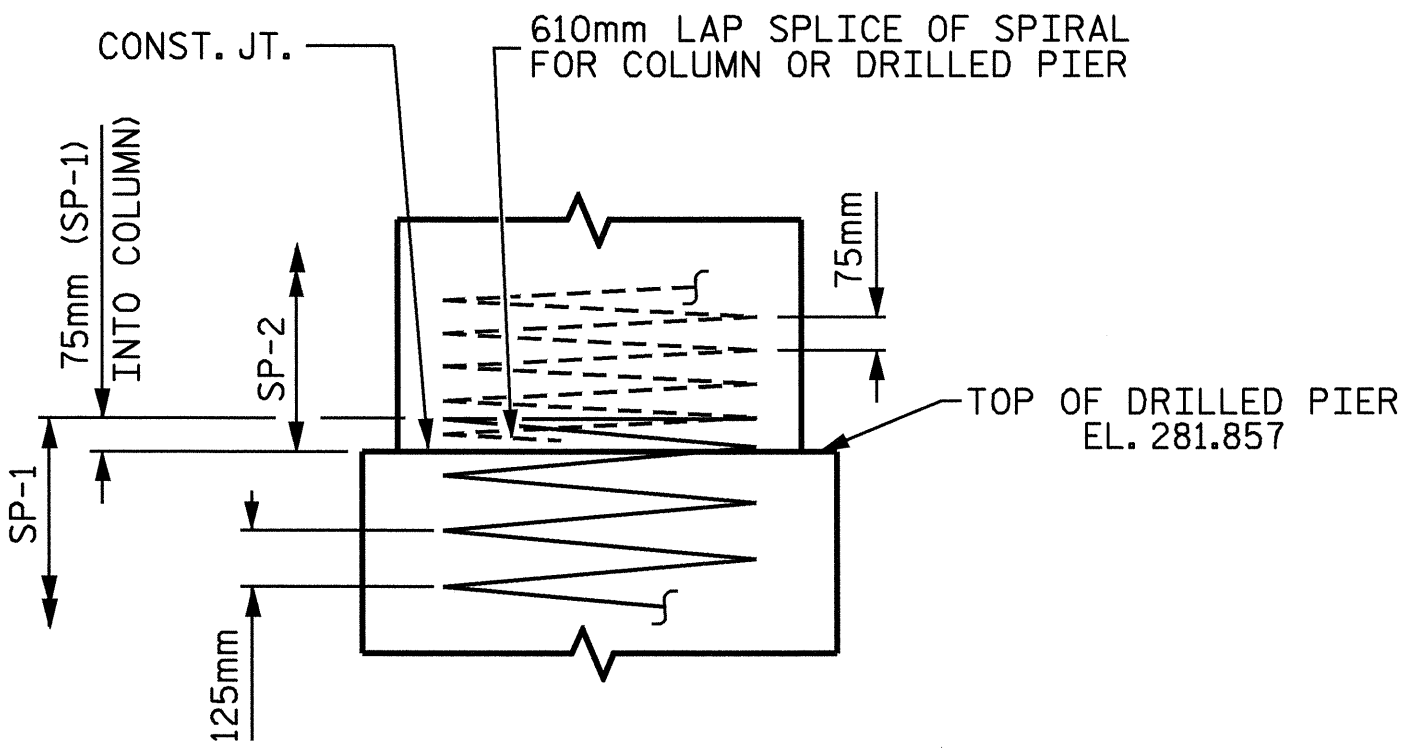
BILL OF MATERIAL					
BENT #1					
BAR NO.	SIZE	TYPE	LENGTH	WEIGHT	
B1	6	36	1	11800	560
B2	10	16	STR	10900	169
B3	6	36	STR	10900	517
B4	6	13	STR	4340	26
M1	24	36	STR	9820	1864
S1	41	16	3	4040	257
U1	32	13	4	2100	67
U2	8	13	4	2040	16
U3	4	13	4	2160	9
U4	4	13	4	2360	9
V1	24	36	2	7520	1427
REINFORCING STEEL				KG	4921
SP-1	2	*	5	161820	502
SP-2	2	**	6	263560	524
SPIRAL REINF. STEEL				KG	1026
CLASS A CONCRETE					
POUR #2	COLUMNS		m ³	11.4	
POUR #3	CAP		m ³	20.8	
TOTAL CLASS A CONCRETE				m ³	32.2
DRILLED PIER CONCRETE					
POUR #1	DRILLED PIERS		m ³	15.7	
1220mm Ø DRILLED PIERS IN SOIL					1.4m
1220mm Ø DRILLED PIERS NOT IN SOIL					12.0m
PERMANENT STEEL CASING FOR 1220mm Ø DRILLED PIERS					1.7m
CSL TUBES					60.4m
** THE SP-2 SPIRAL REINFORCING STEEL SHALL BE W20 OR D-20 COLD DRAWN WIRE OR #13 PLAIN OR DEFORMED BAR.					
* THE SP-1 SPIRAL REINFORCING STEEL SHALL BE W31 OR D-31 COLD DRAWN WIRE OR #16 PLAIN OR DEFORMED BAR.					



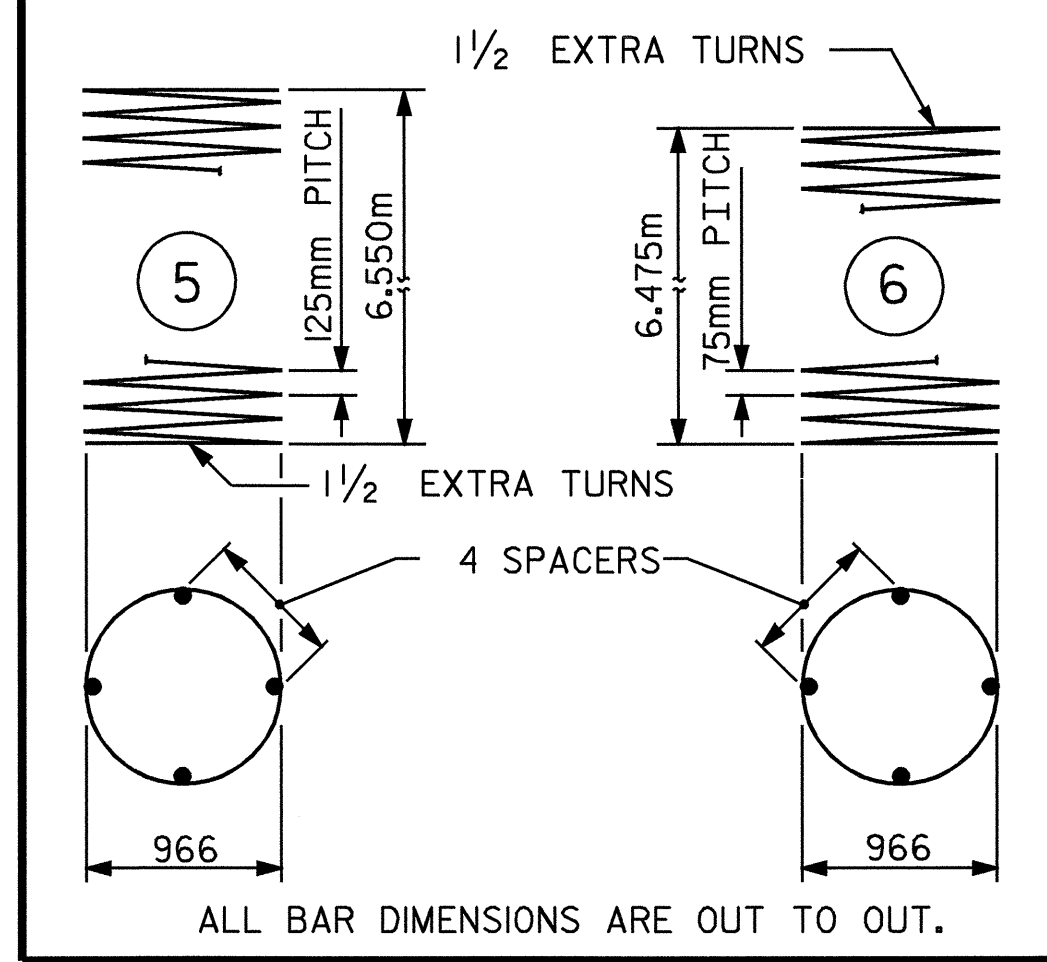
LEFT END VIEW



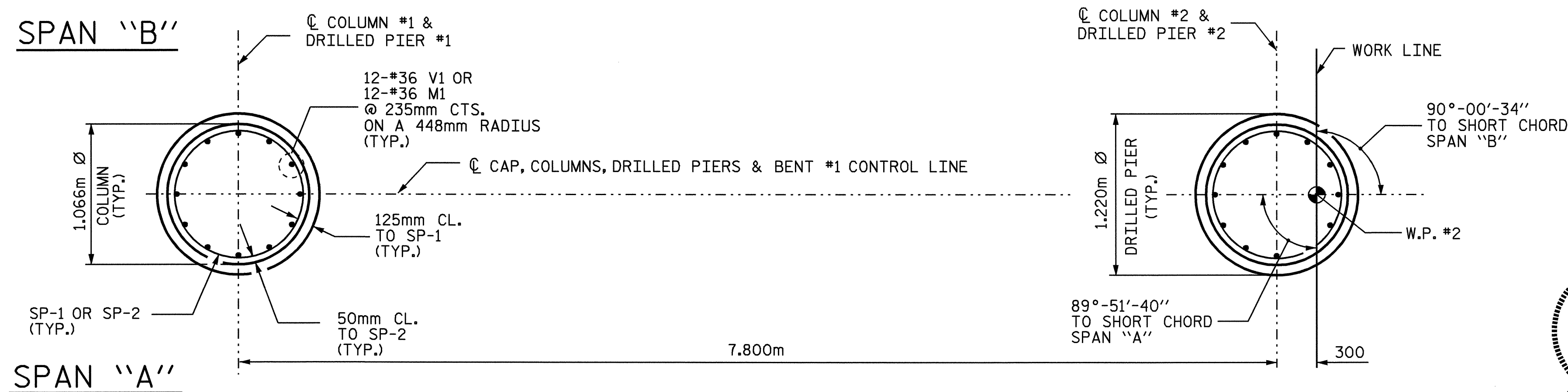
RIGHT END VIEW



CONSTRUCTION JOINT DETAIL



ALL BAR DIMENSIONS ARE OUT TO OUT.

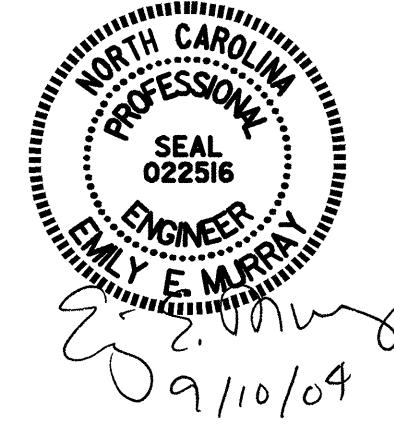


PLAN OF DRILLED PIERS AND COLUMNS

PROJECT NO. R-2206C
LINCOLN-CATAWBA COUNTY
STATION: 256+91.000 -L-

SHEET 2 OF 2

STATE OF NORTH CAROLINA DEPARTMENT OF TRANSPORTATION RALEIGH					
SUBSTRUCTURE BENT #1 LEFT LANE					
REVISIONS					
NO.	BY:	DATE:	NO.	BY:	DATE:
1			3		
2			4		
SHEET NO.					3-305
TOTAL SHEETS					374



DRAWN BY: C. MILLER DATE: 04-04
CHECKED BY: T. AVERETTE DATE: 06-04