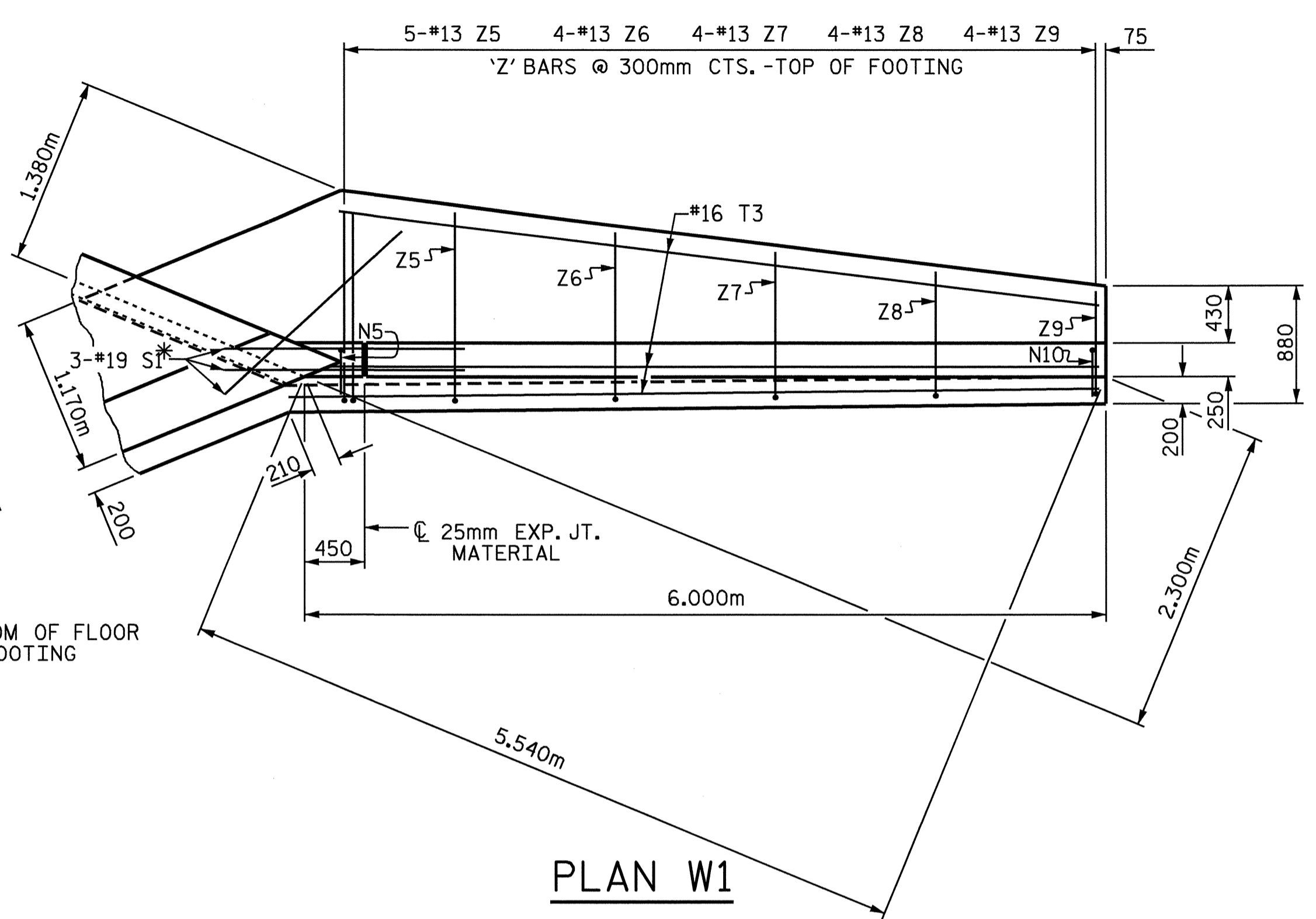
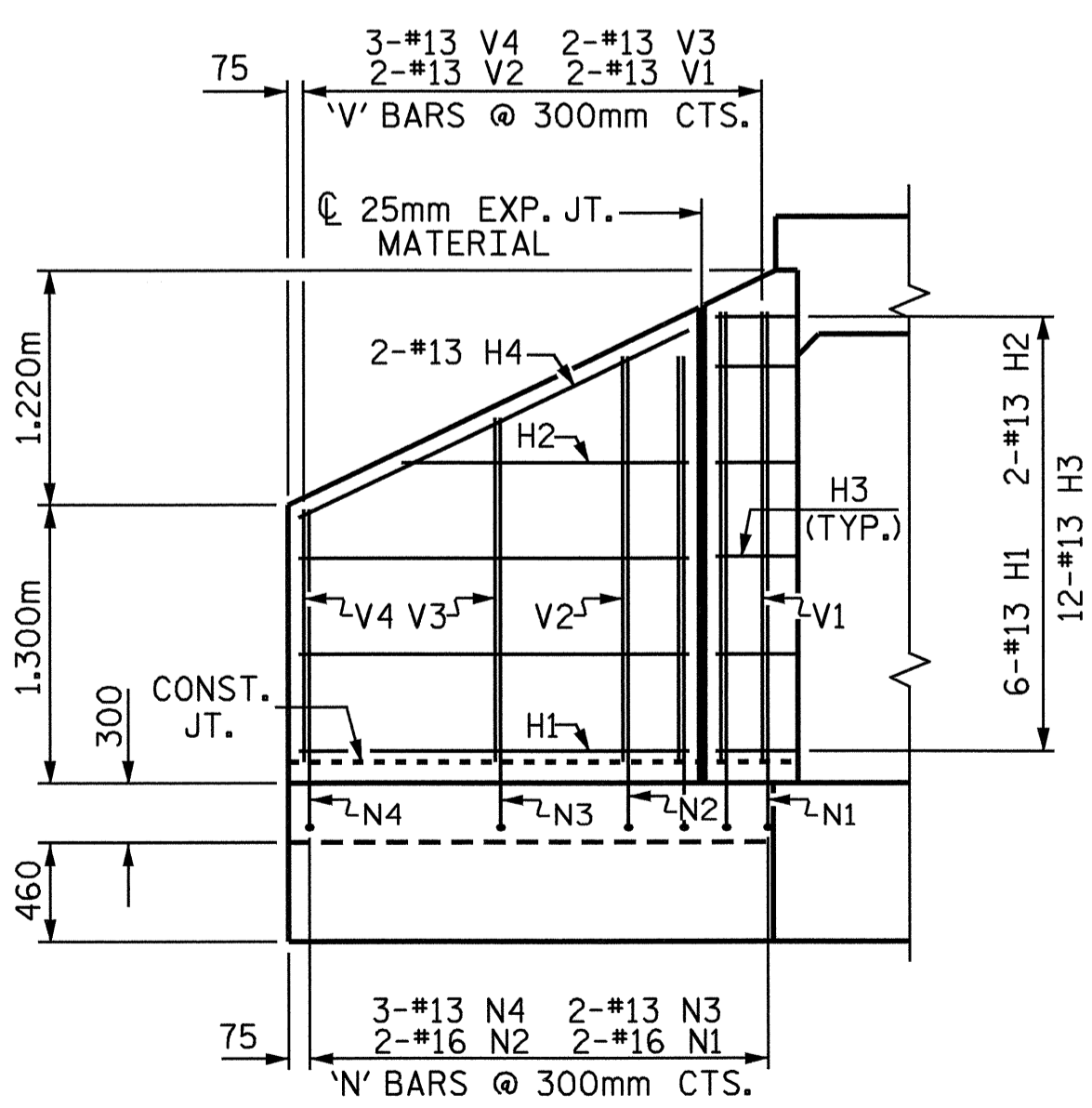


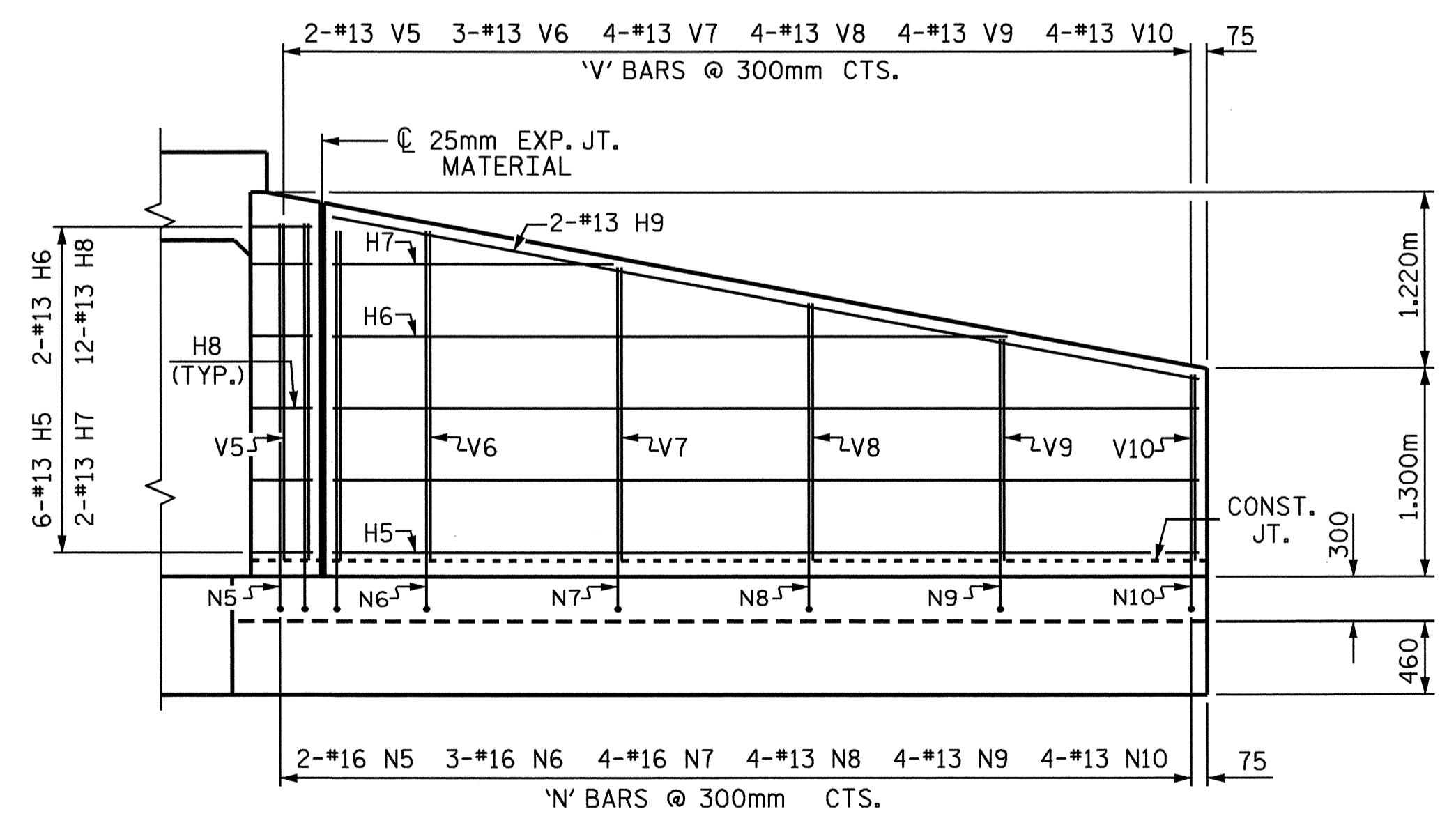
PLAN W2



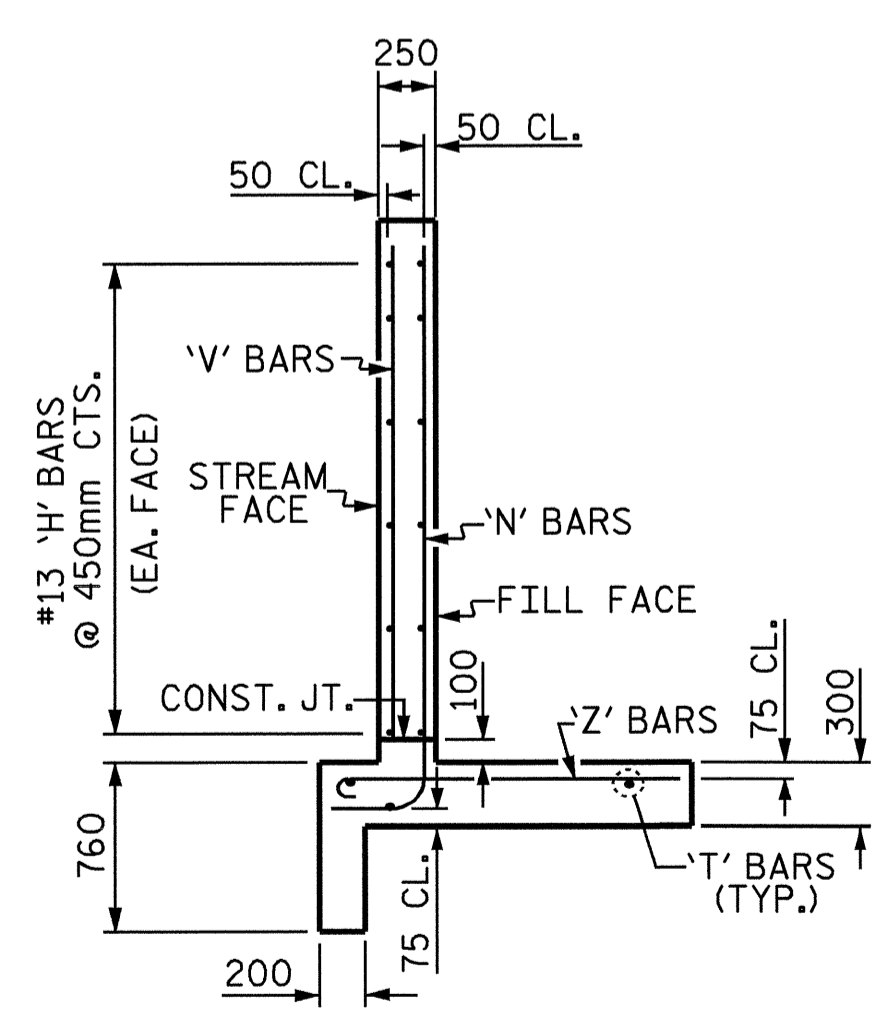
PLAN W1



ELEVATION W2

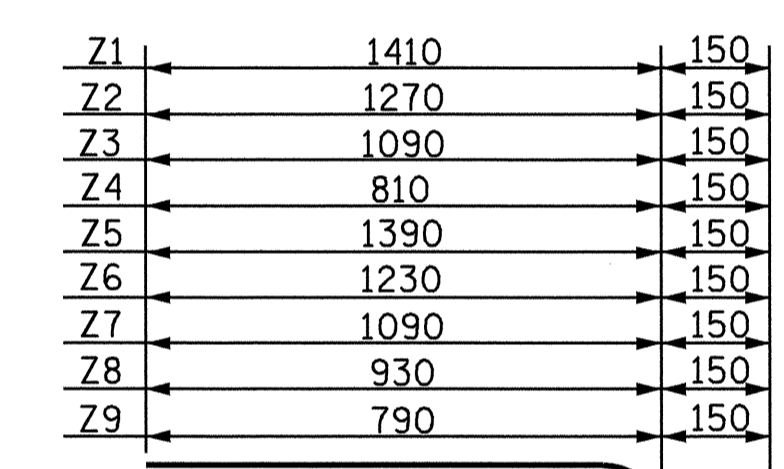
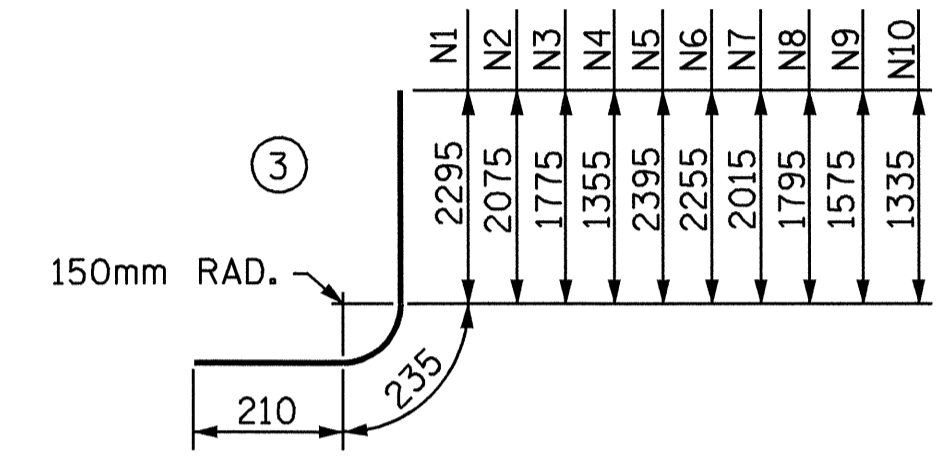
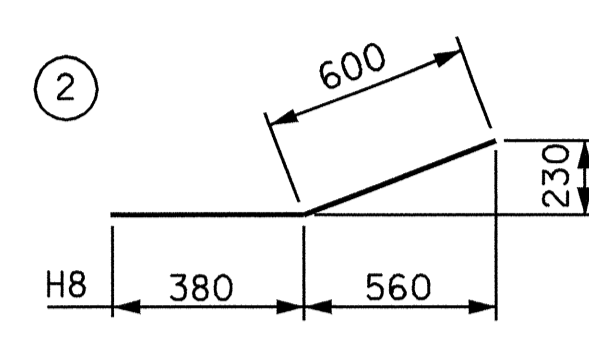
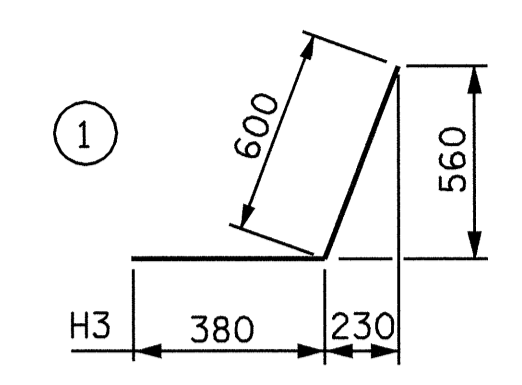


ELEVATION W1



TYPICAL WING SECTION

ALL BAR DIMENSIONS ARE OUT TO OUT.



④

BAR TYPES

BILL OF MATERIAL

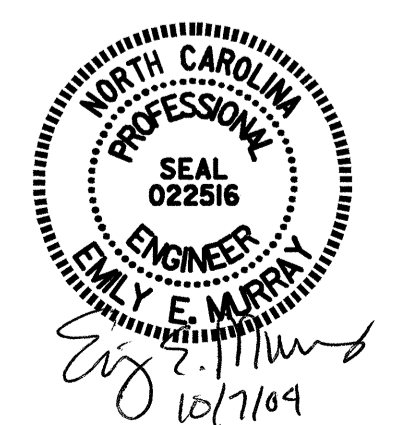
BAR NO.	SIZE	TYPE	LENGTH	WEIGHT	
H1	12	13	STR	1840	22
H2	4	13	STR	1340	5
H3	24	13	1	980	23
H4	4	13	STR	2020	8
H5	12	13	STR	5440	65
H6	4	13	STR	4300	17
H7	4	13	STR	1940	8
H8	24	13	2	980	23
H9	4	13	STR	5520	22
N1	4	16	3	2740	17
N2	4	16	3	2520	16
N3	4	13	3	2220	9
N4	6	13	3	1800	11
N5	4	16	3	2840	18
N6	6	16	3	2700	25
N7	8	16	3	2460	31
N8	8	13	3	2240	18
N9	8	13	3	2020	16
N10	8	13	3	1780	14
S1	12	19	STR	1800	48
T1	4	16	STR	2400	15
T2	2	16	STR	2680	8
T3	6	16	STR	6000	56
V1	4	13	STR	2120	8
V2	4	13	STR	1900	8
V3	4	13	STR	1600	6
V4	6	13	STR	1180	7
V5	4	13	STR	2220	9
V6	6	13	STR	2080	12
V7	8	13	STR	1840	15
V8	8	13	STR	1620	13
V9	8	13	STR	1400	11
V10	8	13	STR	1160	9
Z1	4	13	4	1560	6
Z2	4	13	4	1420	6
Z3	4	13	4	1240	5
Z4	6	13	4	960	6
Z5	10	13	4	1540	15
Z6	8	13	4	1380	11
Z7	8	13	4	1240	10
Z8	8	13	4	1080	9
Z9	8	13	4	940	7

REINFORCING STEEL FOR 4 WINGS 668 kg  
 CLASS A CONCRETE  
 4 WINGS 16.5 m<sup>3</sup>  
 2 HEADWALLS 0.8 m<sup>3</sup>  
 2 END CURTAIN WALLS 0.8 m<sup>3</sup>  
 TOTAL 18.1 m<sup>3</sup>

PROJECT NO. R-2206C  
 LINCOLN-CATAWBA COUNTY  
 STATION: 183+18.000 -L-

SHEET 4 OF 4

STATE OF NORTH CAROLINA  
 DEPARTMENT OF TRANSPORTATION  
 RALEIGH  
 STANDARD WINGS  
 FOR  
 CONCRETE BOX CULVERT  
 H = 2.1m SLOPE 2 : 1  
 45° SKEW



REVISIONS						SHEET NO.	
NO.	BY:	DATE:	NO.	BY:	DATE:	C-4	
1			3			TOTAL SHEETS	9
2			4				

ASSEMBLED BY : W.D. CRUTCHER DATE : 10-4-04  
 CHECKED BY : M.M. PARSONS DATE : 10-5-04  
 DRAWN BY : FPP 06/97  
 CHECKED BY : VAP 11/97

FOR WING ORIENTATION, SEE SHEET 2 OF 4