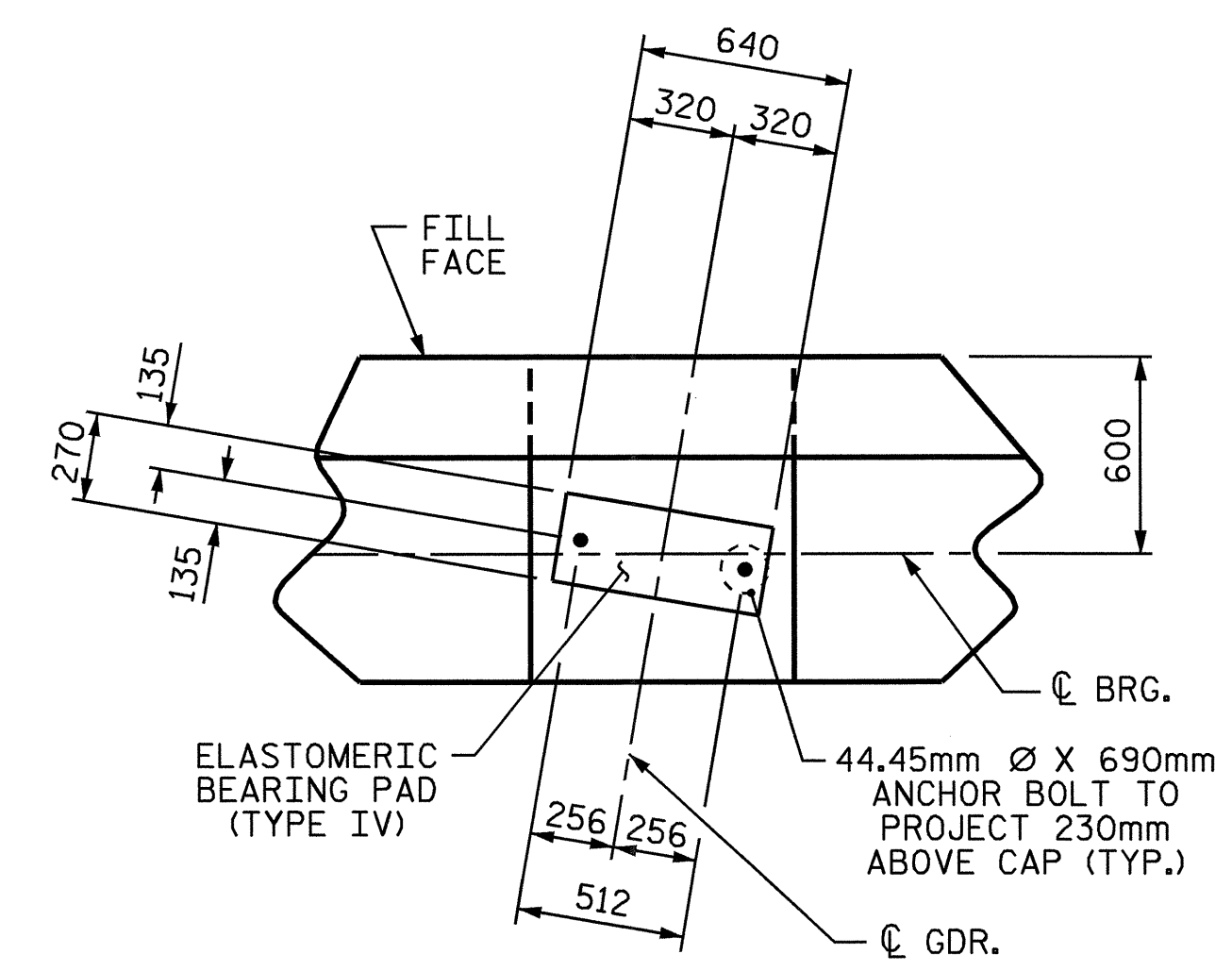
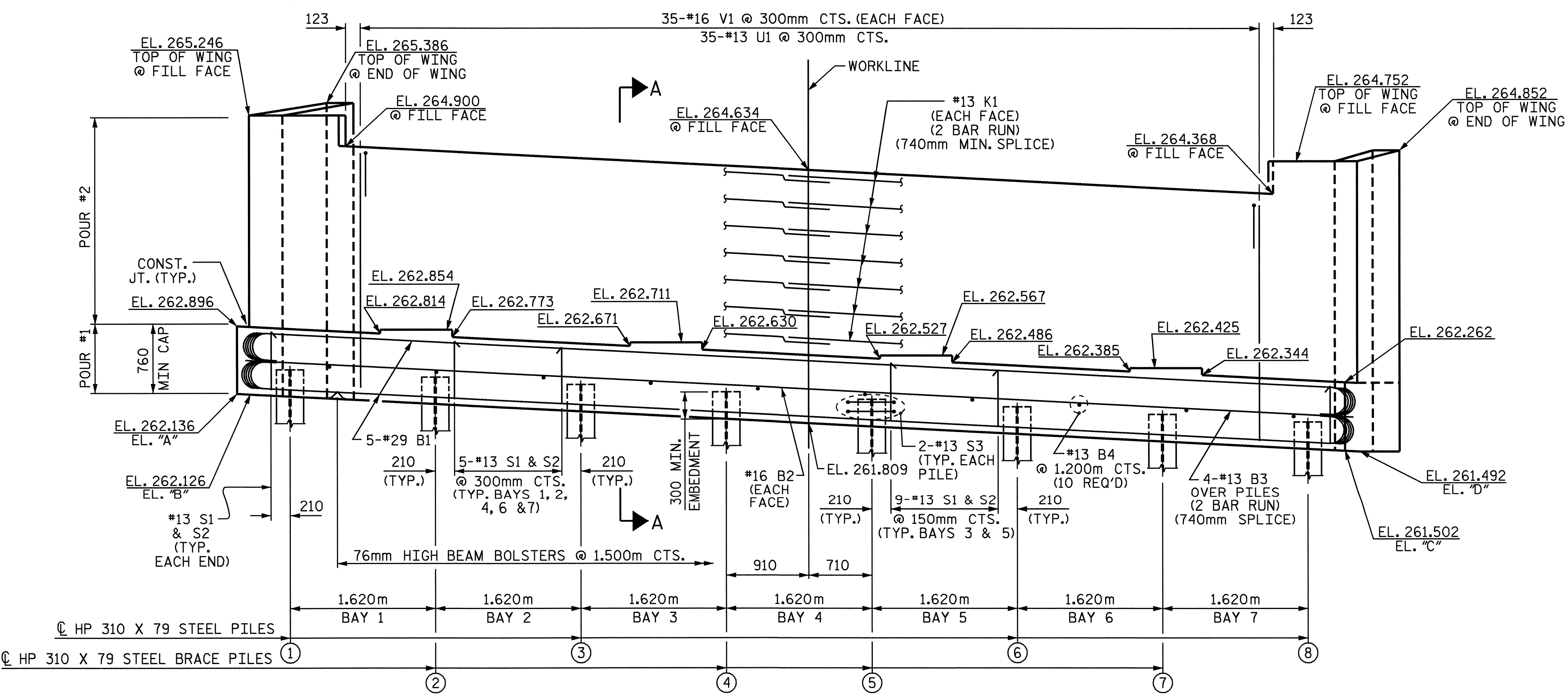


PLAN

**NOTES:**  
 STIRRUPS IN THE CAP MAY BE SHIFTED AS NECESSARY TO CLEAR ANCHOR BOLTS.  
 FOR EPOXY PROTECTIVE COATING, SEE SPECIAL PROVISIONS.  
 BACKWALL SHALL BE PLACED BEFORE APPLYING THE EPOXY PROTECTIVE COATING.  
 THE TOP SURFACE AREAS OF THE END BENT CAP SHALL BE CURED IN ACCORDANCE WITH THE STANDARD SPECIFICATIONS EXCEPT THAT THE MEMBRANE CURING COMPOUND METHOD SHALL NOT BE USED.  
 THE TOP SURFACE OF THE END BENT CAP EXCEPT THE BRIDGE SEAT BUILDUPS SHALL BE SLOPED TRANSVERSELY FROM THE FILL FACE TO THE BACK FACE AT THE RATE OF 2%.  
 THE CONTRACTOR SHALL PROVIDE FOR INSTALLATION OF THE 102mm Ø DRAIN PIPE THROUGH THE WING WALL AS REQUIRED FOR REINFORCED BRIDGE APPROACH FILLS, SEE THE ROADWAY PLANS. REINFORCING STEEL IN THE WING WALL MAY BE SHIFTED AS NECESSARY TO CLEAR THE DRAIN PIPE.



DETAIL "A"  
(TYP. EACH GIRDER)



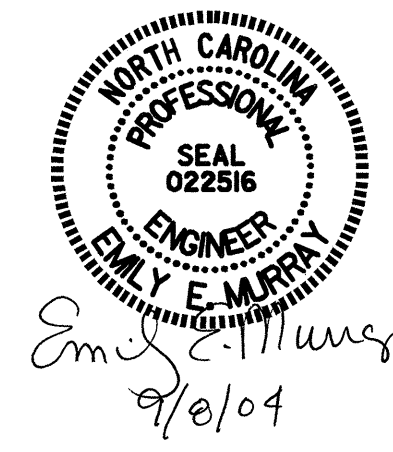
ELEVATION

TOP OF PILE ELEVATIONS	
PILE	ELEVATION
1	262.404
2	262.321
3	262.239
4	262.156
5	262.073
6	261.990
7	261.907
8	261.824

PROJECT NO. R-2206C  
 LINCOLN-CATAWBA COUNTY  
 STATION: 195+74.885 -L-

SHEET 1 OF 3

STATE OF NORTH CAROLINA DEPARTMENT OF TRANSPORTATION RALEIGH				SUBSTRUCTURE END BENT #2	
REVISIONS					
NO.	BY:	DATE:	NO.	BY:	DATE:
1			3		
2			4		
					SHEET NO. S-23
					TOTAL SHEETS 374



DRAWN BY: PEGGY ADKINS DATE: 11-03  
 CHECKED BY: T. AVERETTE DATE: 1-04