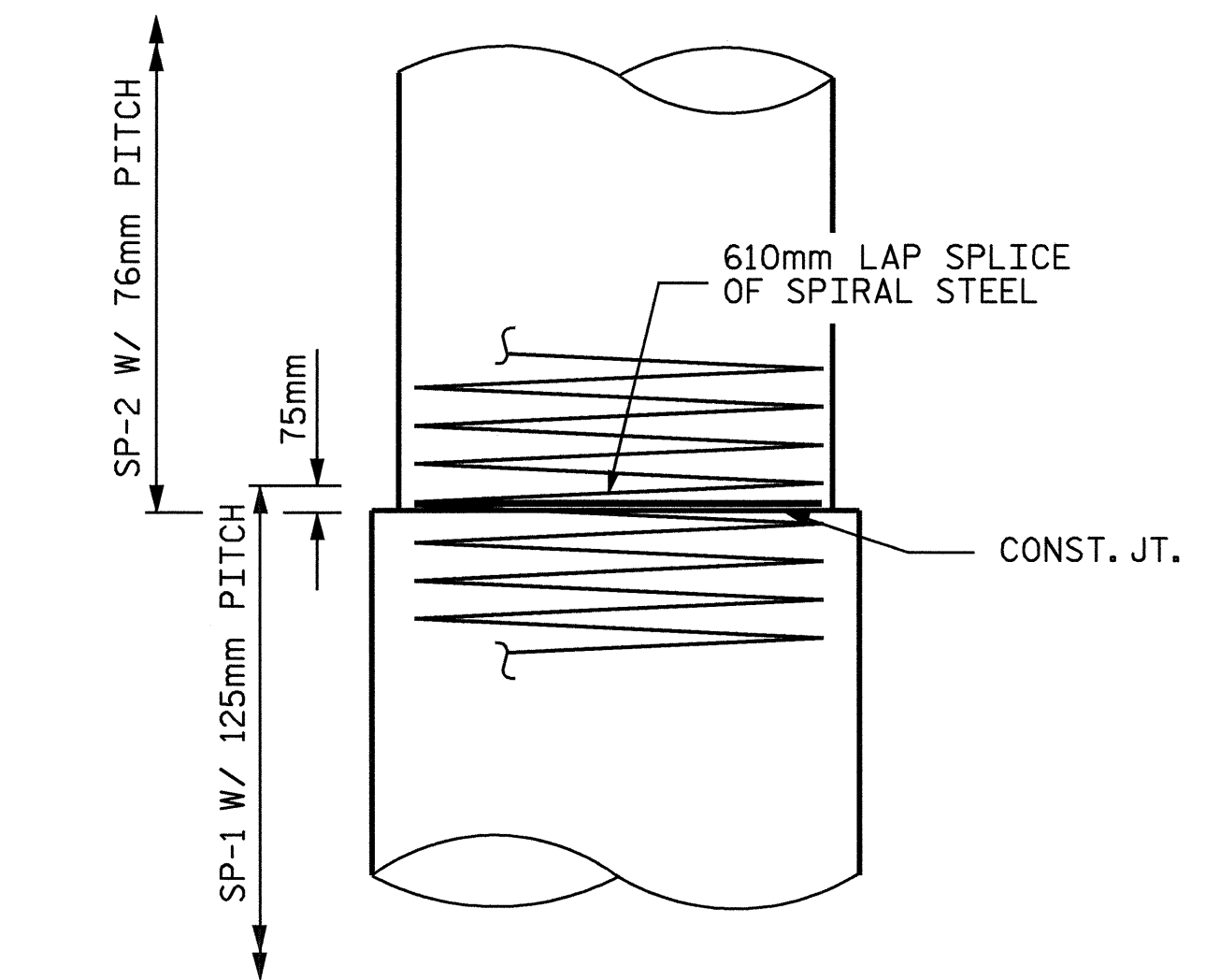


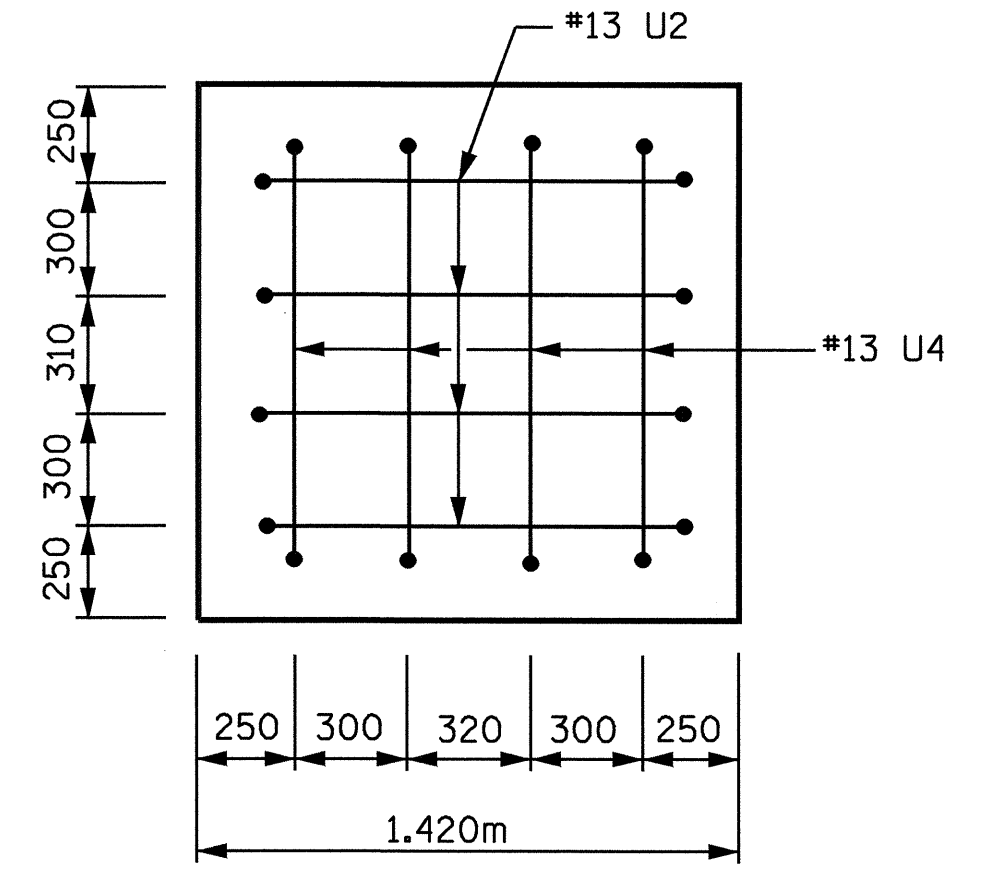
SECTION A-A

SECTION B-B

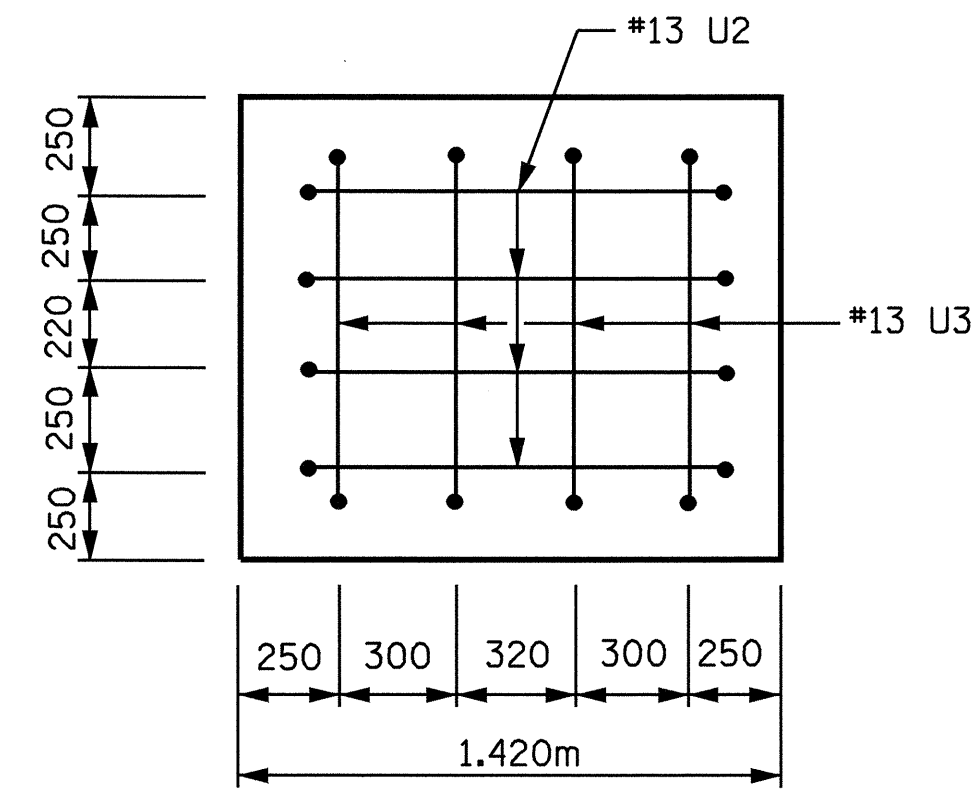
SECTION C-C



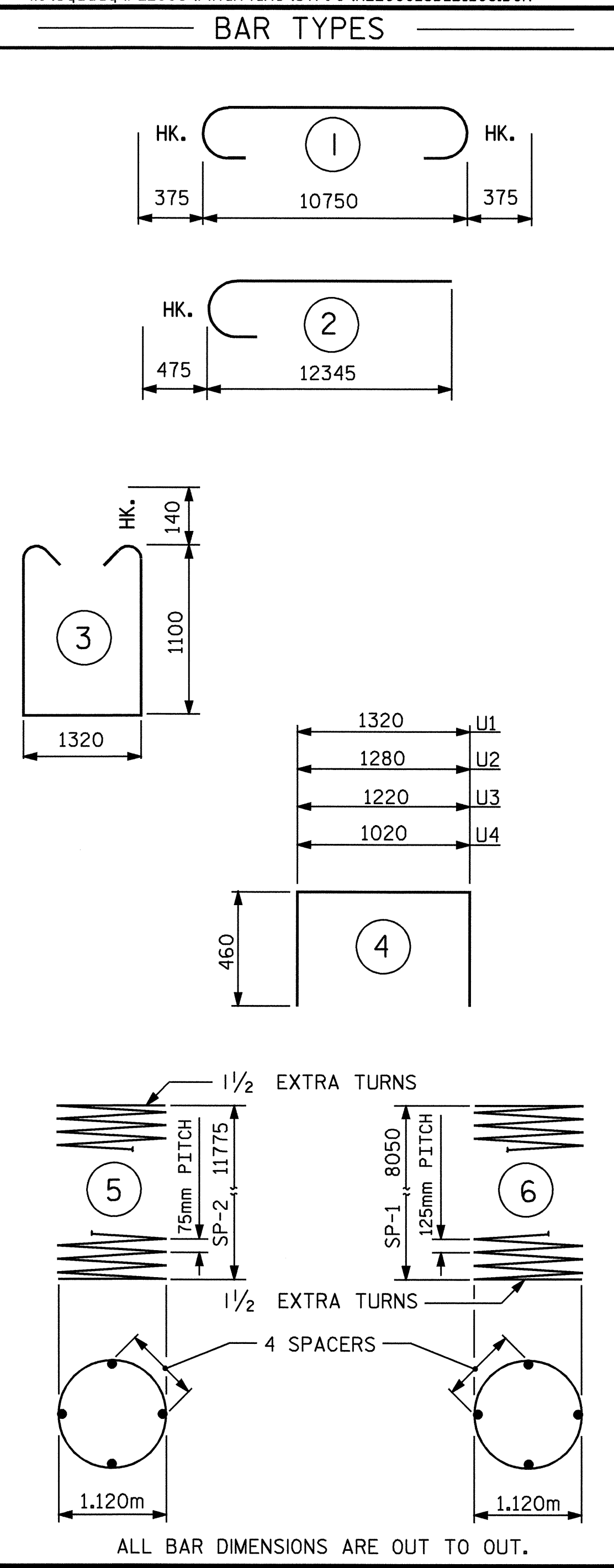
CONST. JT. DETAIL



LEFT END VIEW

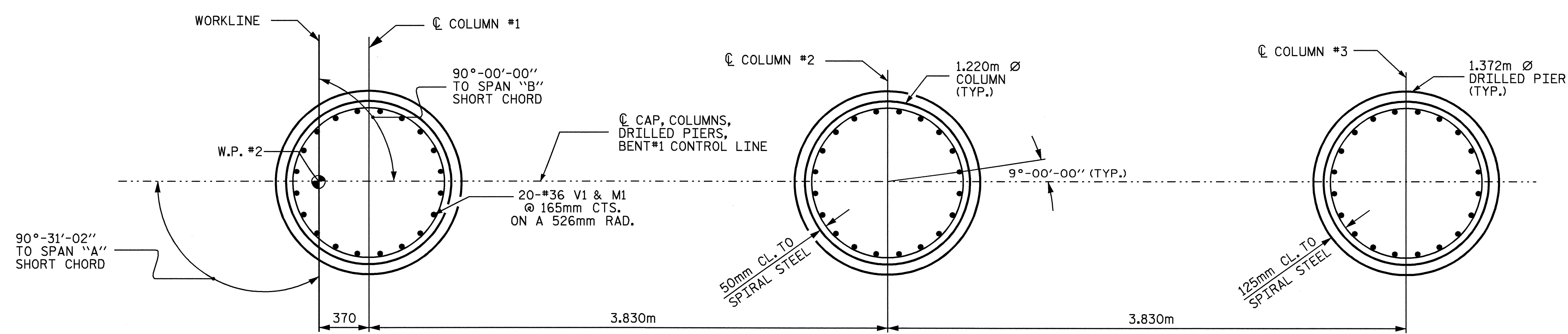


RIGHT END VIEW



BILL OF MATERIAL					
BENT #1					
BAR NO.	SIZE	TYPE	LENGTH	WEIGHT	
B1	6 29	1	11500	350	
B2	6 29	STR	10800	328	
B3	6 16	STR	10800	101	
B4	6 13	STR	5900	35	
B5	6 13	STR	1100	7	
S1	36 16	3	3800	212	
U1	49 13	4	2240	109	
U2	8 13	4	2200	17	
U3	4 13	4	2140	9	
U4	4 13	4	1940	8	
V1	60 36	2	12820	6082	
M1	60 36	STR	11320	5370	
REINFORCING STEEL			KG	12628	
SP-1	3 *	6	228920	1066	
SP-2	3 **	5	551360	1644	
SPIRAL COL. REINF. STEEL			KG	2710	
CLASS "A" CONCRETE					
POUR #2 COLUMNS			m ³	41.0	
POUR #3 CAP			m ³	20.2	
TOTAL CLASS "A" CONCRETE			m ³	61.2	
DRILLED PIER CONCRETE					
POUR #1 DRILLED PIERS			m ³	36.4	
1372mm Ø DRILLED PIERS NOT IN SOIL METERS 11.9					
1372mm Ø DRILLED PIERS IN SOIL METERS 12.7					
CSL TUBES			METERS	108.6	
PERMANENT STEEL CASING FOR 1372mm Ø DRILLED PIERS METERS 14.1					

** THE SP-2 SPIRAL REINFORCING STEEL SHALL BE W20 OR D-20 COLD DRAWN WIRE OR #13 PLAIN OR DEFORMED BAR.
* THE SP-1 SPIRAL REINFORCING STEEL SHALL BE W31 OR D-31 COLD DRAWN WIRE OR #16 PLAIN OR DEFORMED BAR,



PLAN OF COLUMNS & DRILLED PIERS

PROJECT NO. R-2206C
LINCOLN-CATAWBA COUNTY
STATION: 199+48.00 -L-

SHEET 2 OF 2



STATE OF NORTH CAROLINA
DEPARTMENT OF TRANSPORTATION
RALEIGH
SUBSTRUCTURE
BENT #1
RIGHT LANE

REVISIONS					SHEET NO.
NO.	BY:	DATE:	NO.	BY:	DATE:
1			3		
2			4		

DRAWN BY: C.MILLER DATE: 04-04
CHECKED BY: W.D. CRUTCHER DATE: 04-04