

NOTES

STIRRUPS IN CAP MAY BE SHIFTED AS NECESSARY TO ANCHOR BOLTS.

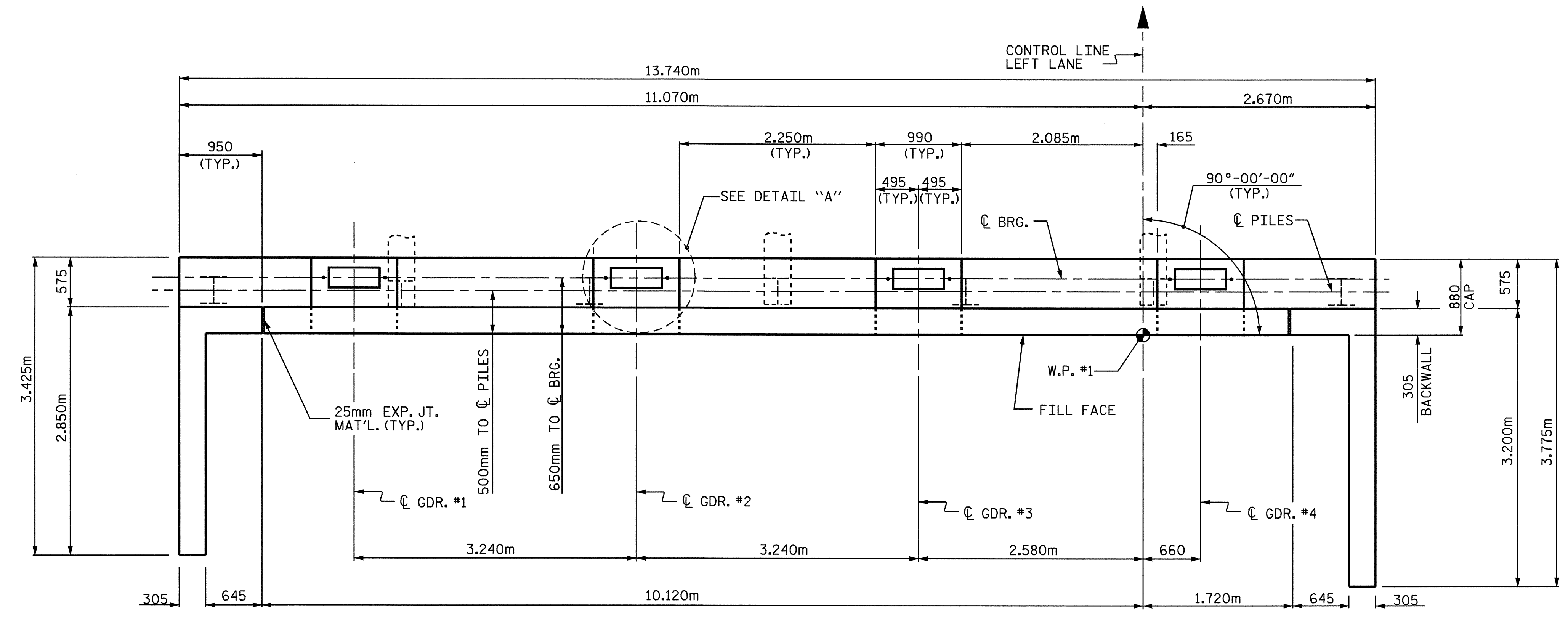
FOR EPOXY PROTECTIVE COATINGS, SEE SPECIAL PROVISIONS.

BACKWALL SHALL BE PLACED BEFORE APPLYING THE EPOXY PROTECTIVE COATING.

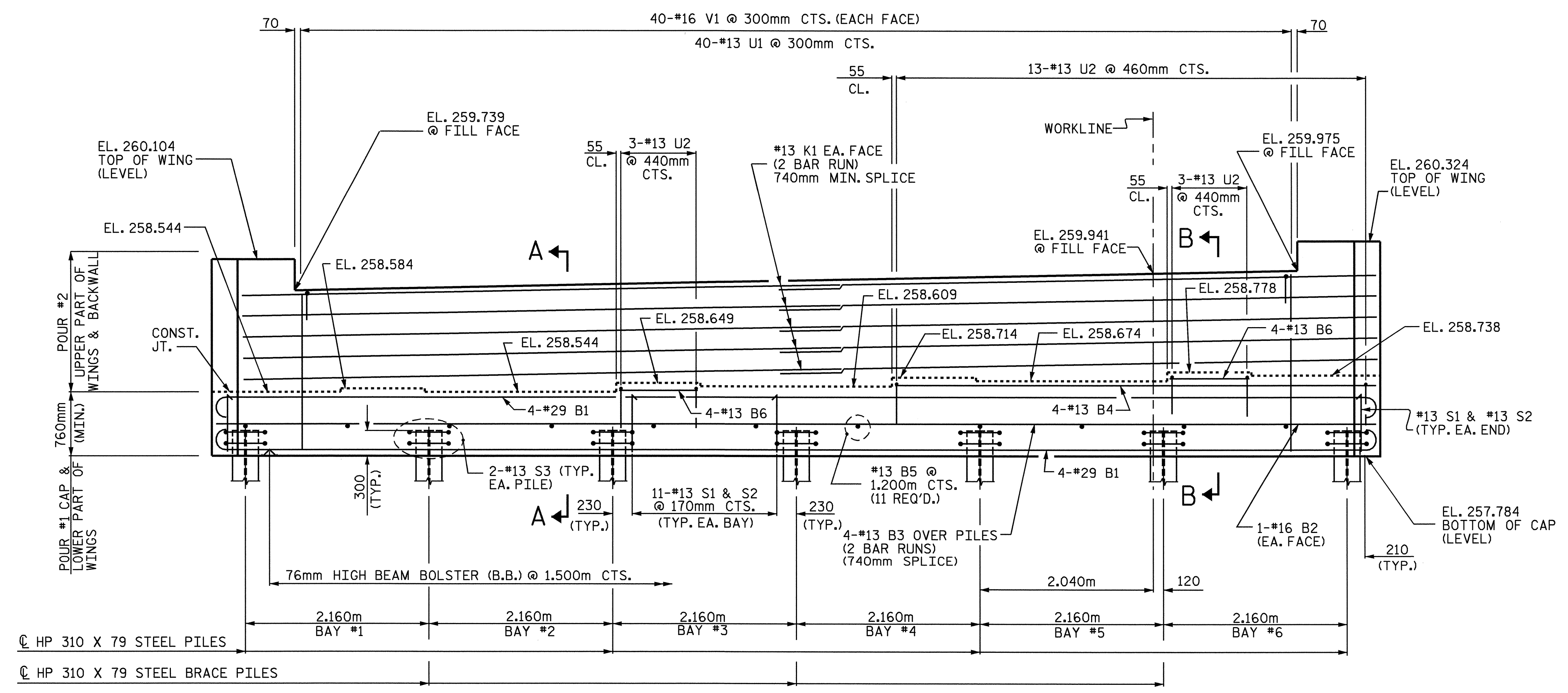
THE TOP SURFACE OF THE END BENT CAPS SHALL BE CURED IN ACCORDANCE WITH THE STANDARD SPECIFICATIONS EXCEPT THE MEMBRANE CURING COMPOUND METHOD SHALL NOT BE USED.

THE TOP SURFACE OF THE CAP EXCEPT THE BRIDGE SEAT BUILD-UPS SHALL BE SLOPED TRANSVERSLY FROM THE FILL FACE TO THE BACK FACE AT THE RATE OF 2%.

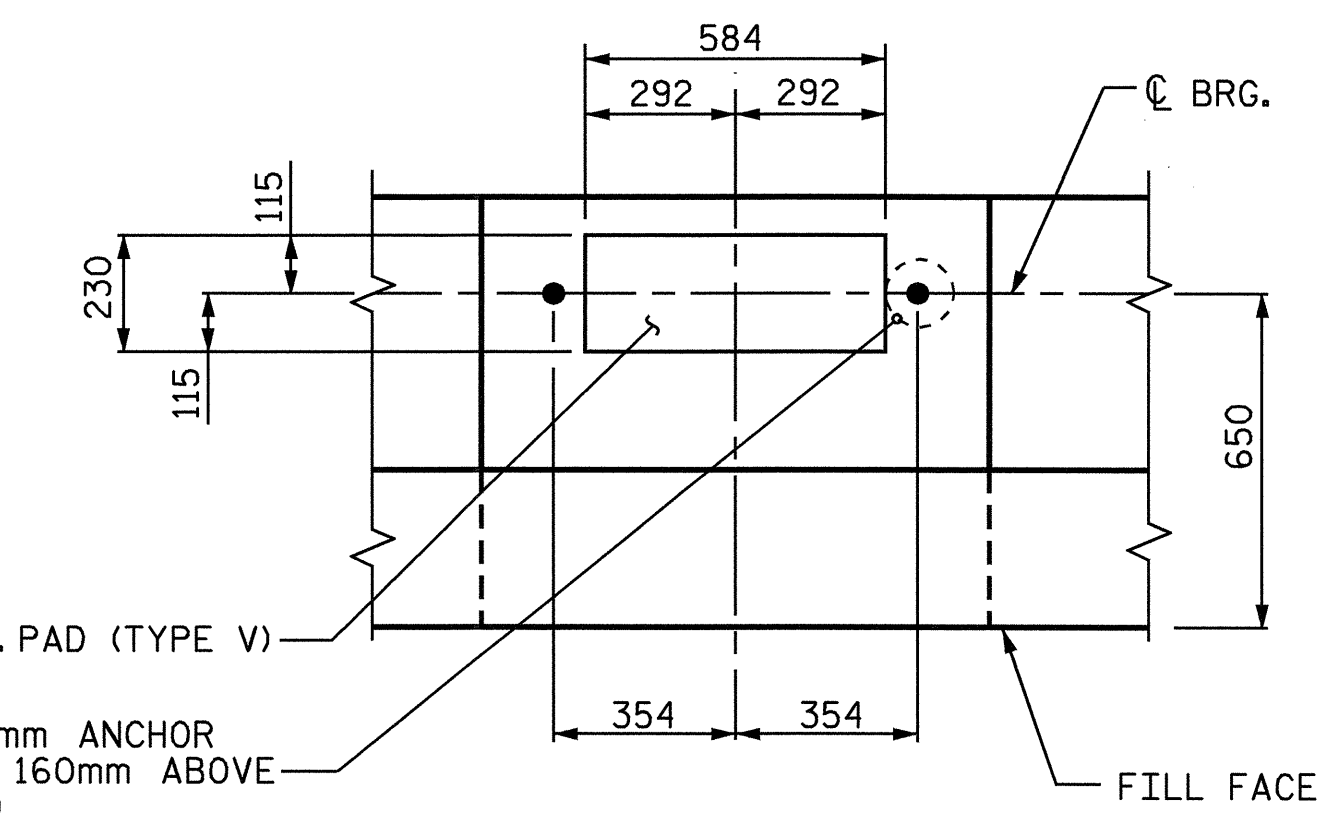
THE CONTRATOR SHALL PROVIDE FOR INSTALLATION OF THE 102mm DIAMETER DRAIN PIPE THROUGH THE WING WALL AS REQUIRED FOR REINFORCED BRIDGE APPROACH FILLS, SEE THE ROADWAY PLANS. REINFORCING STEEL IN THE WING WALL MAY BE SHIFTED AS NECESSARY TO CLEAR THE DRAIN PIPE.



PLAN



ELEVATION



DETAIL "A"
(TYP. EA. GDR.)

PROJECT NO. R-2206C
LINCOLN-CATAWBA COUNTY
 STATION: 223+03.850-L-

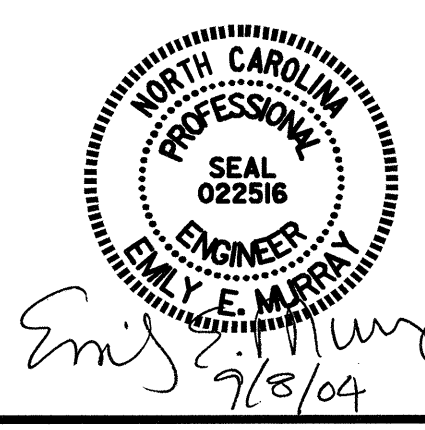
SHEET 1 OF 3

STATE OF NORTH CAROLINA
 DEPARTMENT OF TRANSPORTATION
 RALEIGH

SUBSTRUCTURE
END BENT #1
 LEFT LANE

REVISIONS				SHEET NO.
NO.	BY:	DATE:	NO.	DATE:
1			3	
2			4	

TOTAL SHEETS: 374



DRAWN BY : M.D.PISO DATE : 03/2004
 CHECKED BY : P.ADKINS DATE : 04/2004