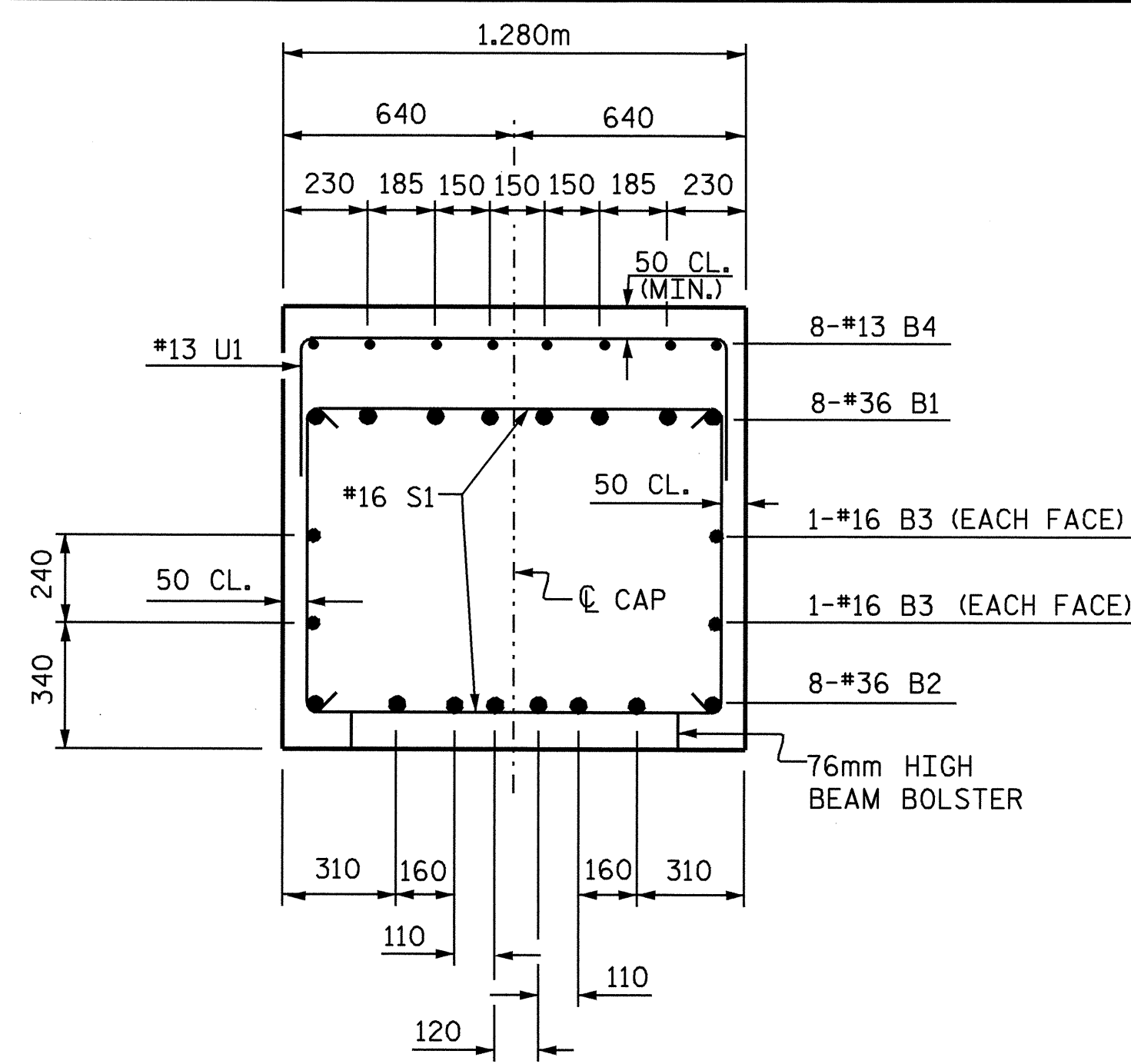
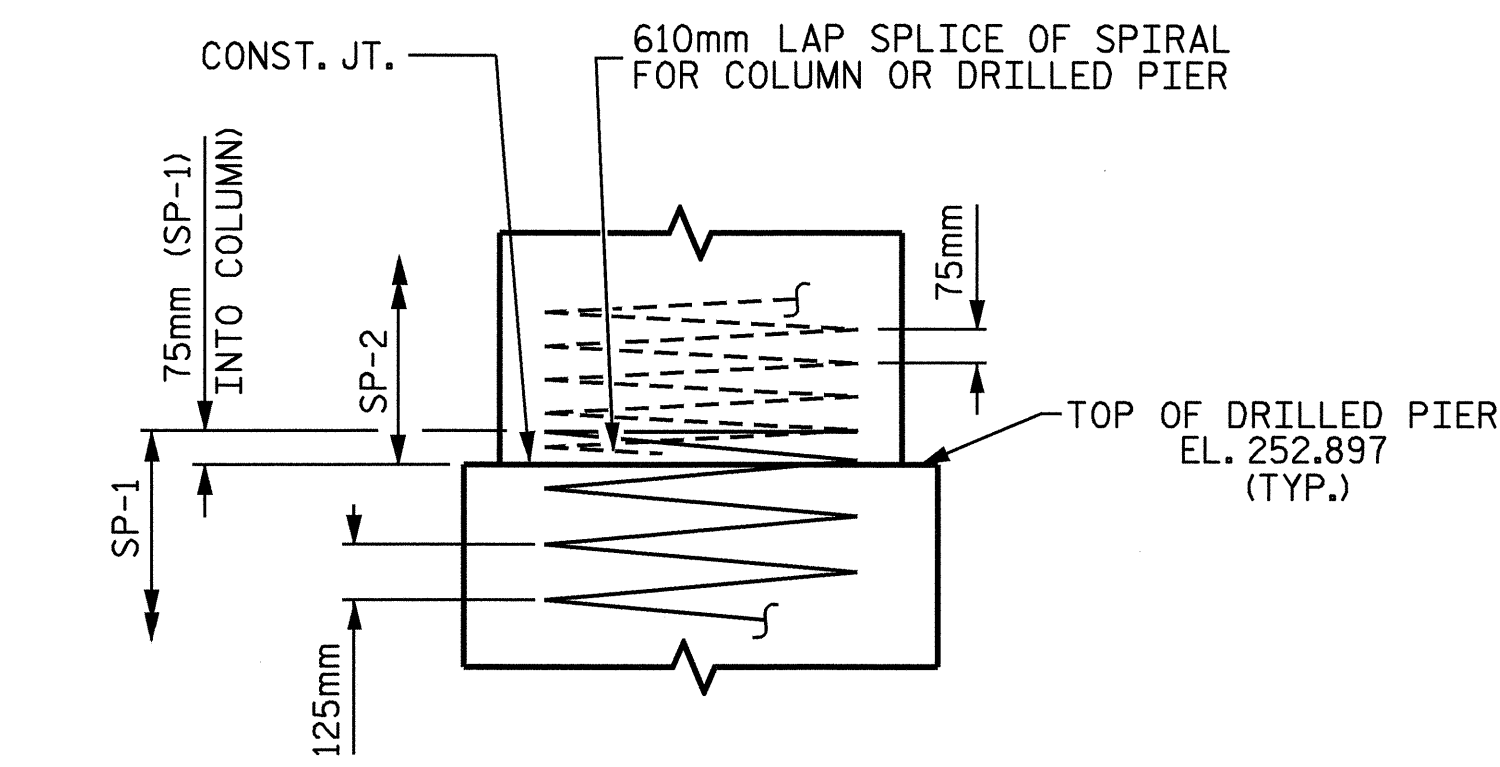


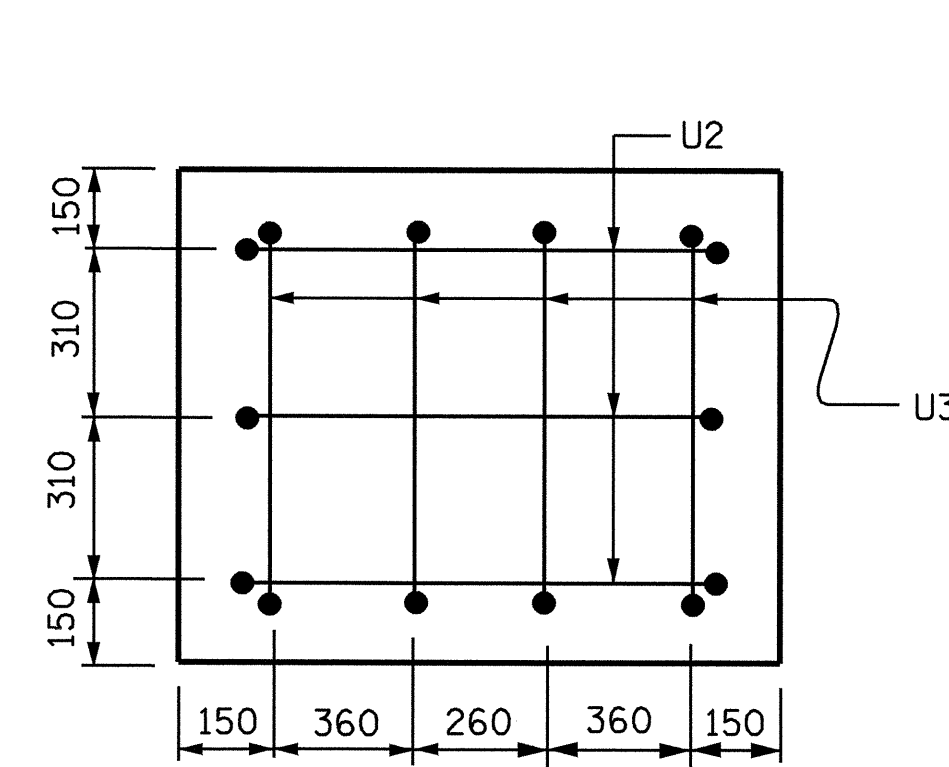
SECTION A-A



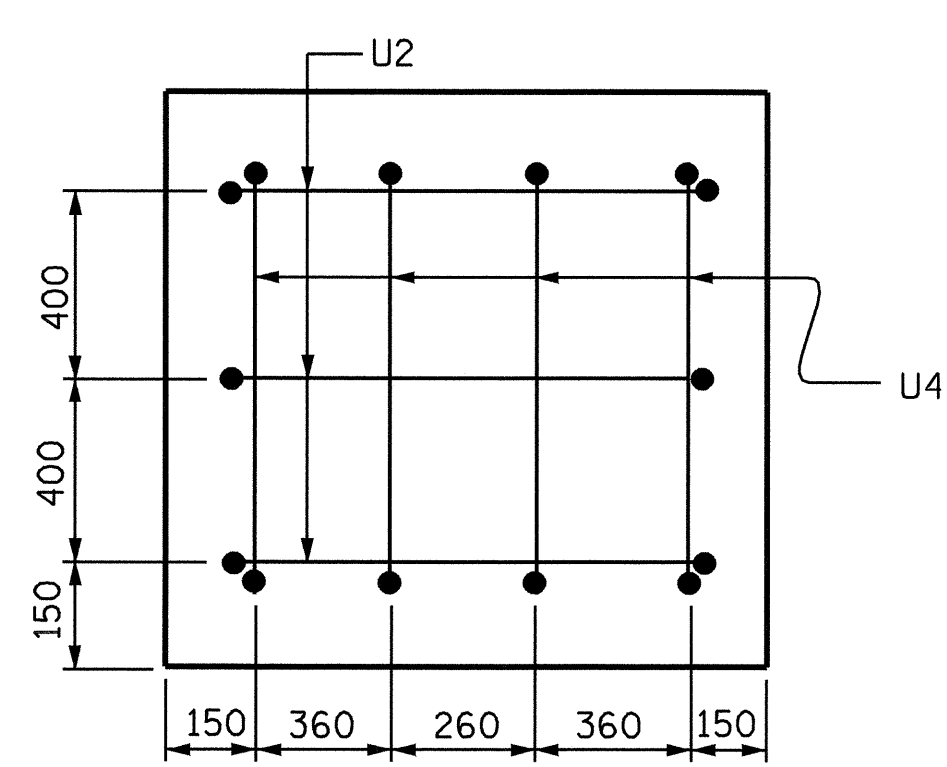
SECTION B-B



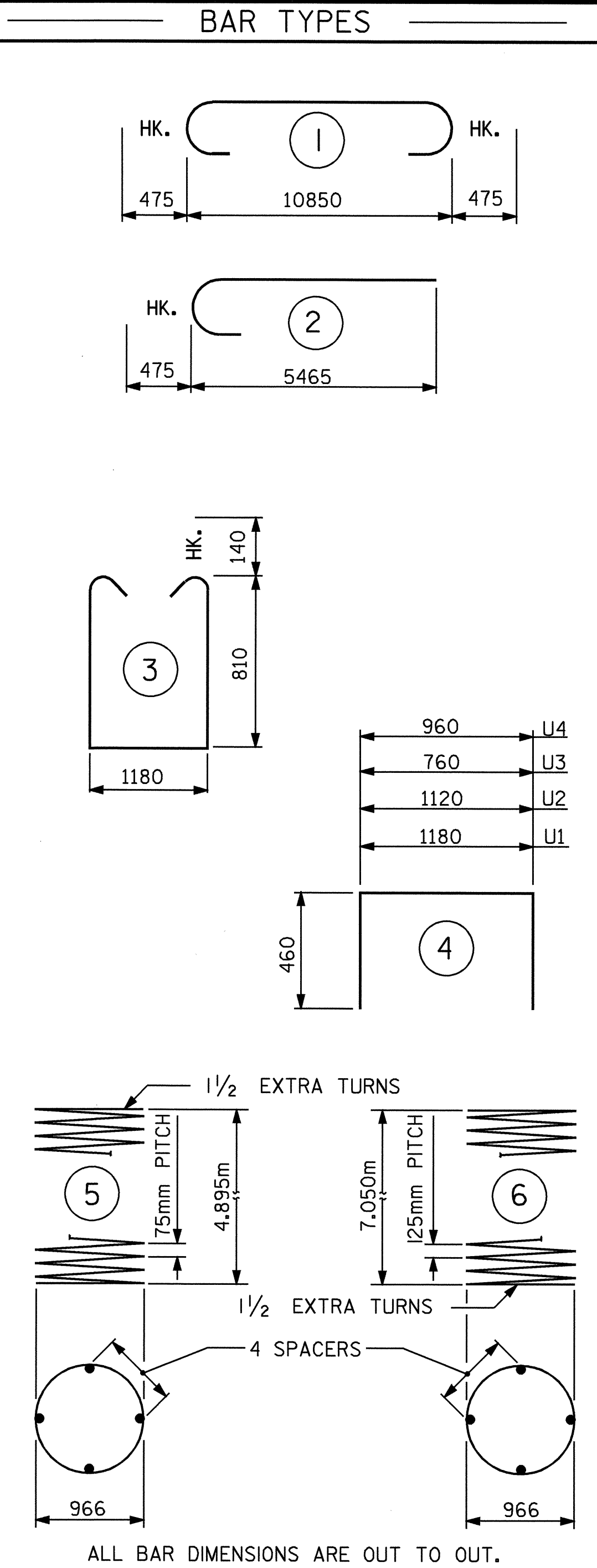
CONSTRUCTION JOINT DETAIL



LEFT END VIEW

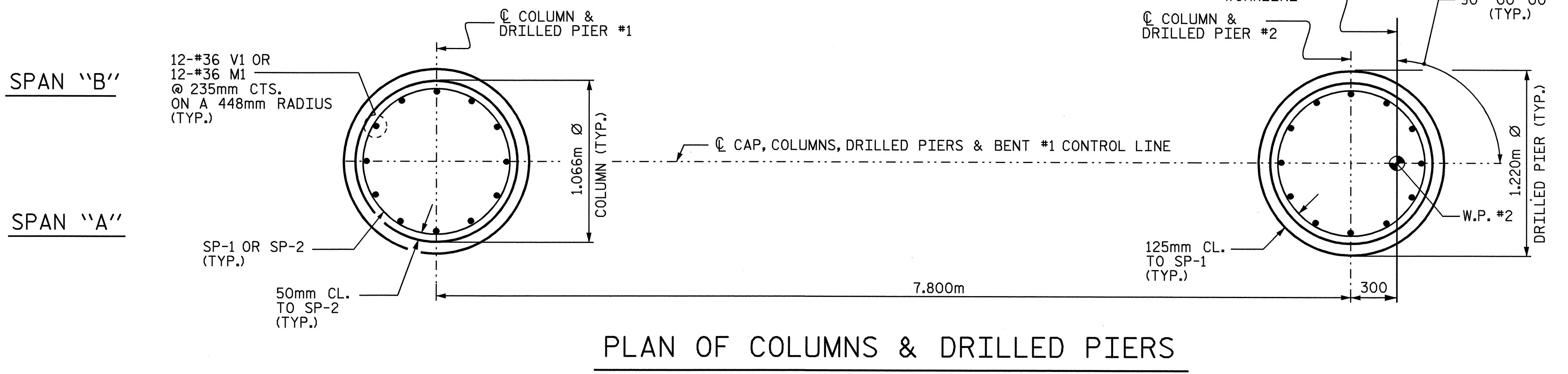


RIGHT END VIEW



ALL BAR DIMENSIONS ARE OUT TO OUT.

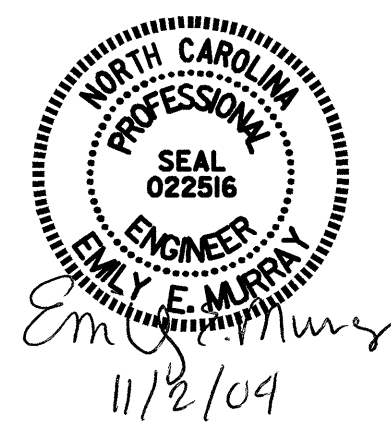
BILL OF MATERIAL						
BENT #1						
BAR NO.	SIZE	TYPE	LENGTH	WEIGHT		
B1	8	36	1	11800	746	
B2	8	36	STR	10900	689	
B3	4	16	STR	10900	68	
B4	8	13	STR	4280	34	
M1	24	36	STR	10320	1958	
S1	59	16	3	3080	282	
U1	32	13	4	2100	67	
U2	6	13	4	2040	12	
U3	4	13	4	1680	7	
U4	4	13	4	1880	7	
V1	24	36	2	5940	1127	
REINFORCING STEEL				KG	4997	
SP-1	2	*	6	173800	539	
SP-2	2	**	5	200660	399	
SPIRAL COLUMN REINF. STEEL				KG	938	
CLASS "A" CONCRETE						
POUR #2 COLUMNS			m ³	8.6		
POUR #3 CAP			m ³	14.0		
TOTAL CLASS "A" CONCRETE				m ³	22.6	
DRILLED PIER CONCRETE						
POUR #1 DRILLED PIERS			m ³	16.8		
1.220m Ø DRILLED PIERS IN SOIL					9.8m	
1.220m Ø DRILLED PIERS NOT IN SOIL					4.6m	
PERMANENT STEEL CASING FOR 1.220m Ø DRILLED PIER					5.8m	
CSL TUBES					64.4m	
** THE SP-2 SPIRAL REINFORCING STEEL SHALL BE W20 OR D-20 COLD DRAWN WIRE OR #13 PLAIN OR DEFORMED BAR.						
* THE SP-1 SPIRAL REINFORCING STEEL SHALL BE W31 OR D-31 COLD DRAWN WIRE OR #16 PLAIN OR DEFORMED BAR.						



PLAN OF COLUMNS & DRILLED PIERS

PROJECT NO. R-2206C
 LINCOLN-CATAWBA COUNTY
 STATION: 223+03.850 -L-

SHEET 2 OF 2



STATE OF NORTH CAROLINA
 DEPARTMENT OF TRANSPORTATION
 RALEIGH
 SUBSTRUCTURE
 BENT #1
 LEFT LANE

DRAWN BY: C. MILLER DATE: 02-04
 CHECKED BY: J. AVERETTE DATE: 05-04

REVISIONS						SHEET NO.
NO.	BY:	DATE:	NO.	BY:	DATE:	TOTAL SHEETS
1			3			5-151
2			4			374