

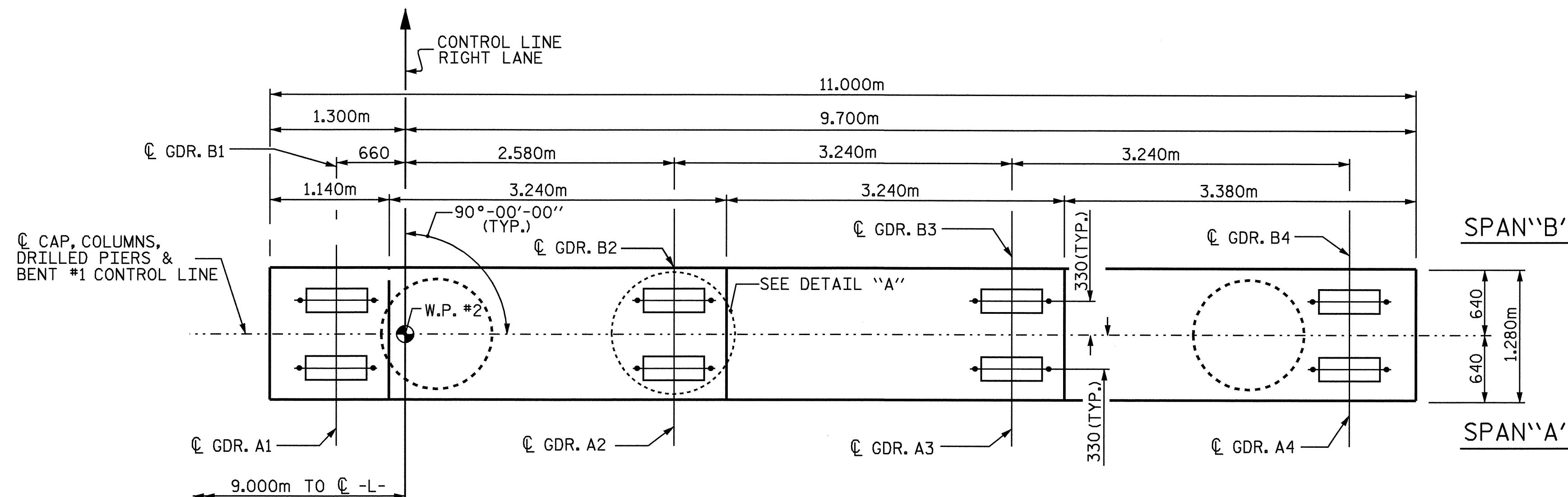
**NOTES:**

STIRRUPS IN CAP MAY BE SHIFTED AS NECESSARY TO CLEAR ANCHOR BOLTS.

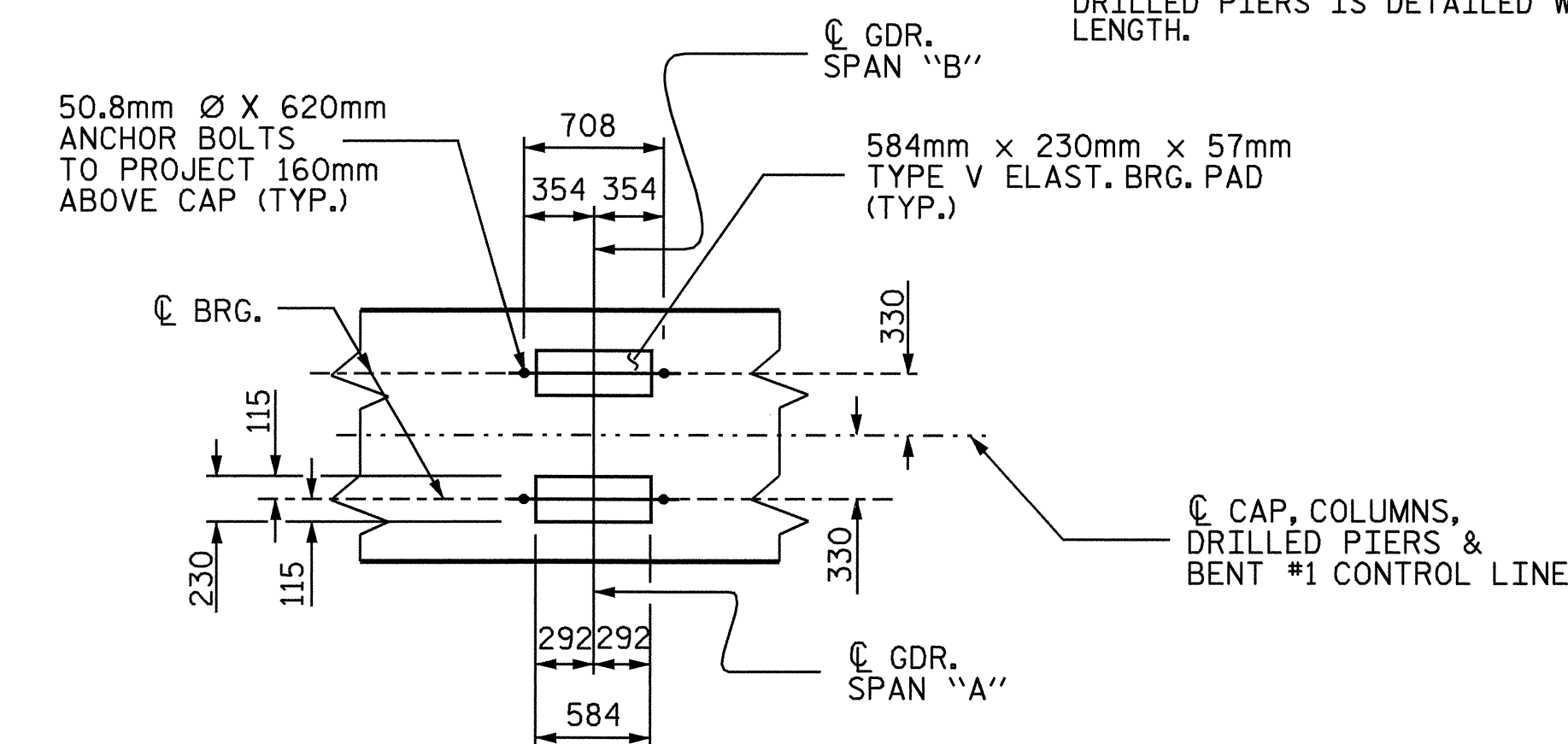
HOOKS ON "V" BARS MAY BE TURNED AS NECESSARY FOR PLACING REINFORCING STEEL.

ALL STEEL IN THE DRILLED PIERS IS INCLUDED IN THE PAY ITEMS FOR "REINFORCING STEEL" AND "SPIRAL COLUMN REINFORCING STEEL".

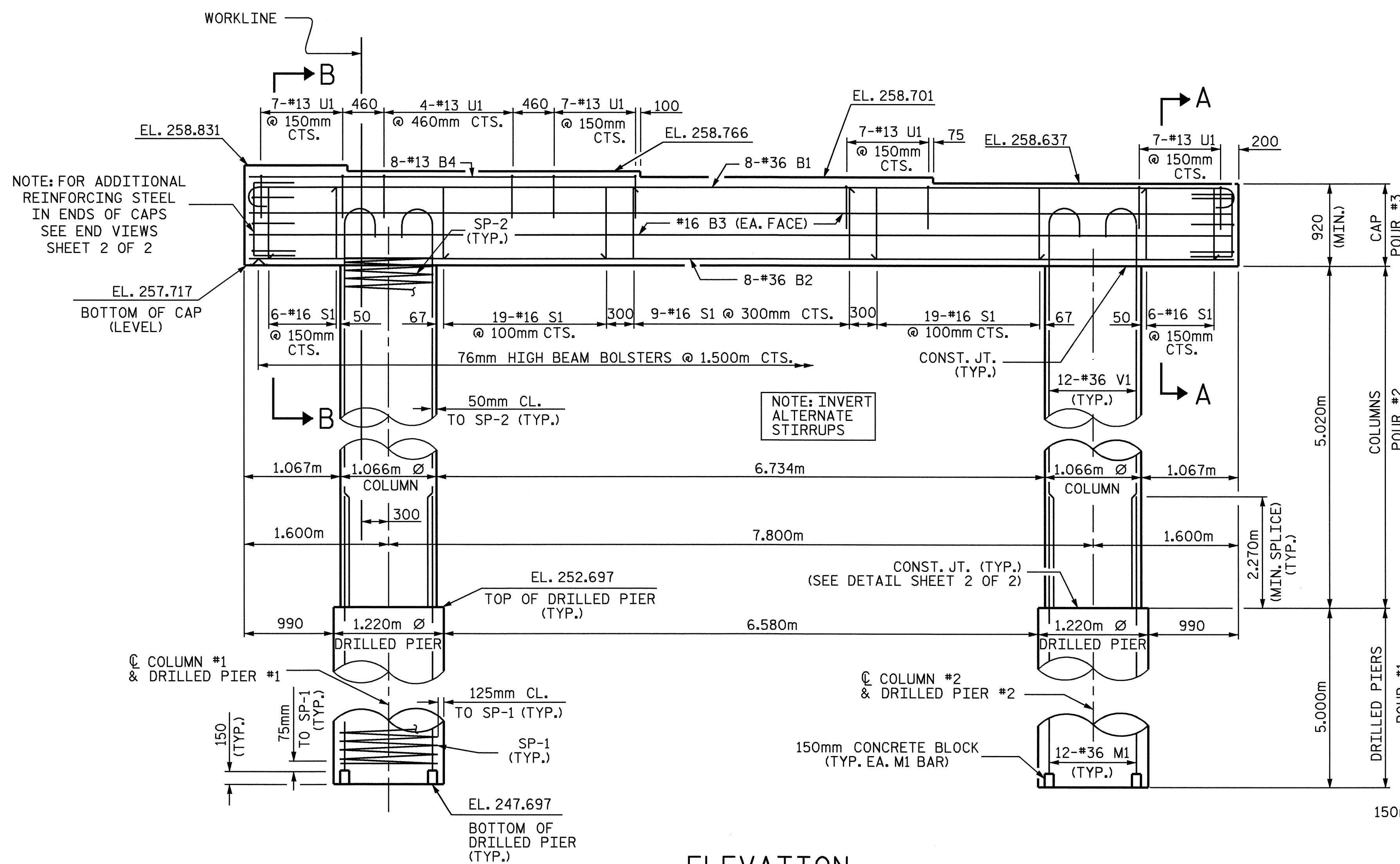
THE CONTRACTOR'S ATTENTION IS CALLED TO THE FACT THAT THE LONGITUDINAL REINFORCEMENT FOR THE DRILLED PIERS IS DETAILED WITH ONE METER OF EXTRA LENGTH.



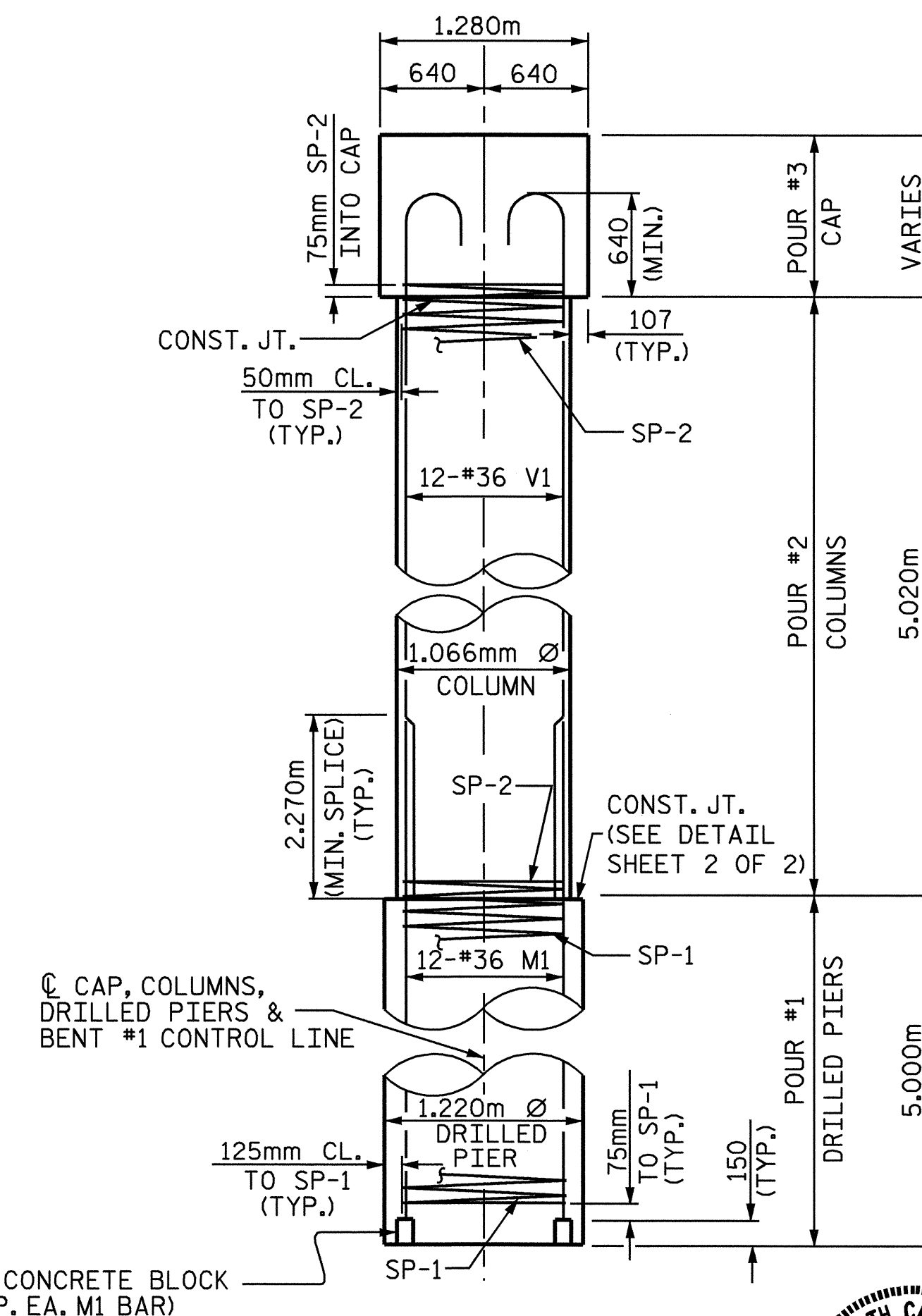
**PLAN**



**DETAIL "A"**  
(TYP. EA. GDR.)



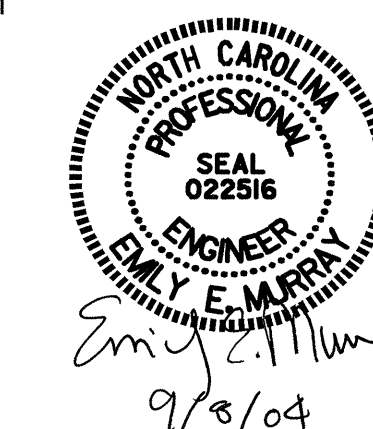
**ELEVATION**



**END ELEVATION**

NOTE: FOR ADDITIONAL REINFORCING STEEL IN ENDS OF CAPS SEE END VIEWS SHEET 2 OF 2

NOTE: INVERT ALTERNATE STIRRUPS



PROJECT NO. R-2206C  
LINCOLN-CATAWBA COUNTY  
STATION: 223+03.850 -L-

SHEET 1 OF 2

STATE OF NORTH CAROLINA DEPARTMENT OF TRANSPORTATION RALEIGH					
SUBSTRUCTURE BENT #1 RIGHT LANE					
REVISIONS					SHEET NO.
NO.	BY:	DATE:	NO.	BY:	DATE:
1			3		
2			4		
TOTAL SHEETS					374

DRAWN BY: C. MILLER DATE: 02-04  
CHECKED BY: J. L. AVERETTE DATE: 5-04

07-SEP-2004 11:00  
W:\squadq\2206c\Final Plans\Str. 10\R2206C\_SD\_BLI.dgn  
derutcher

STR.#10