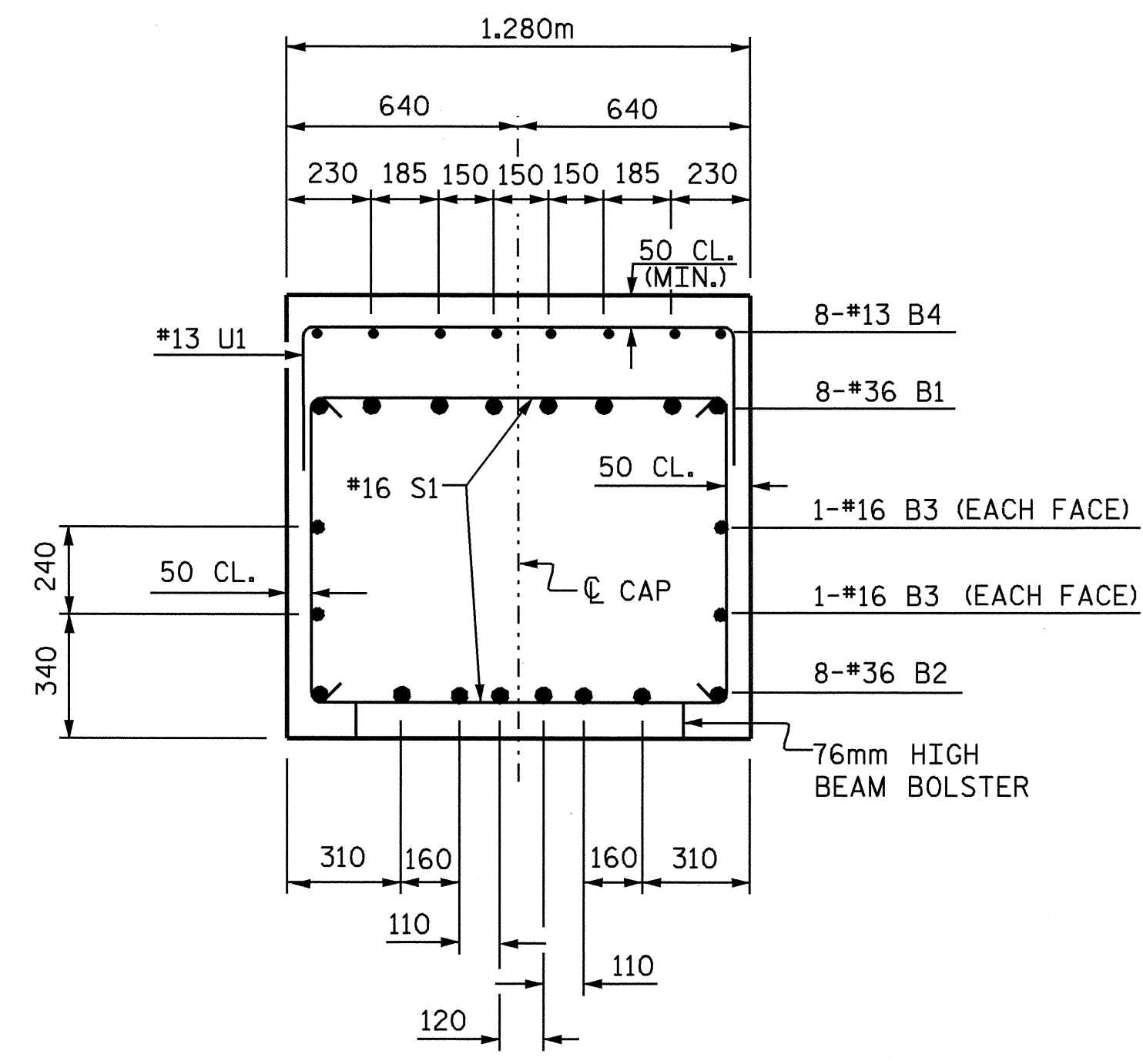
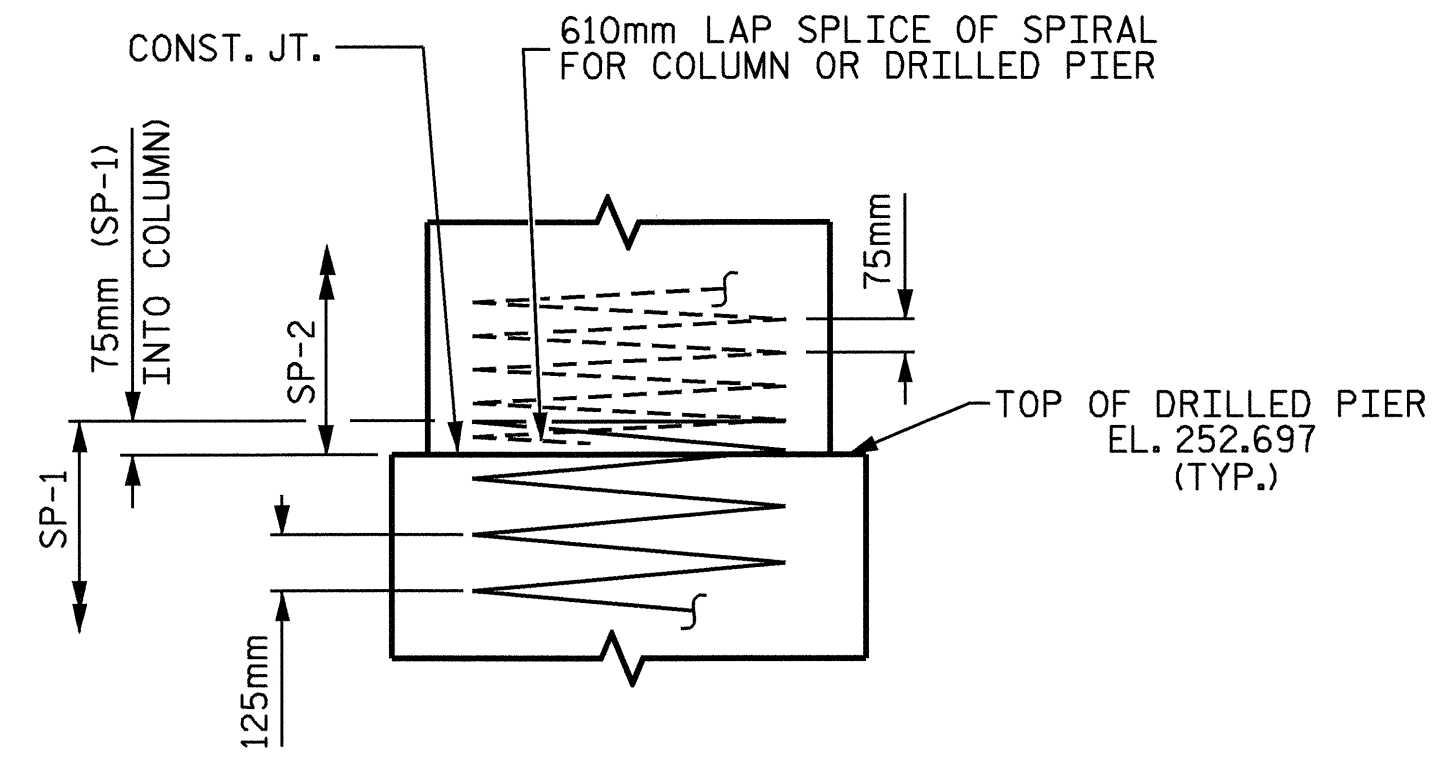


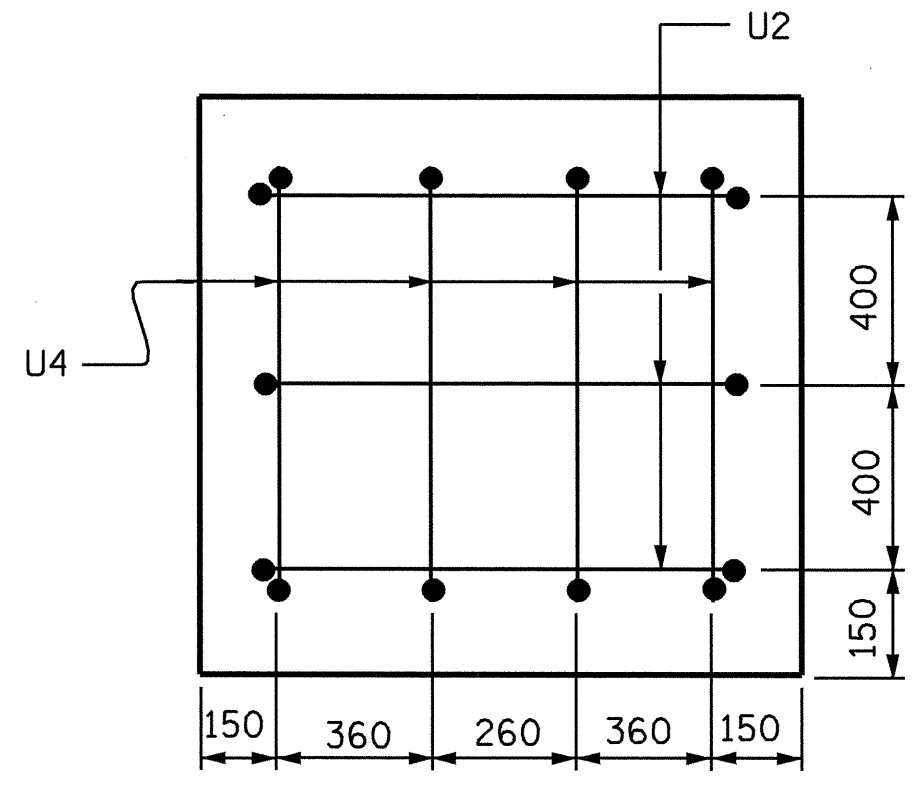
SECTION A-A



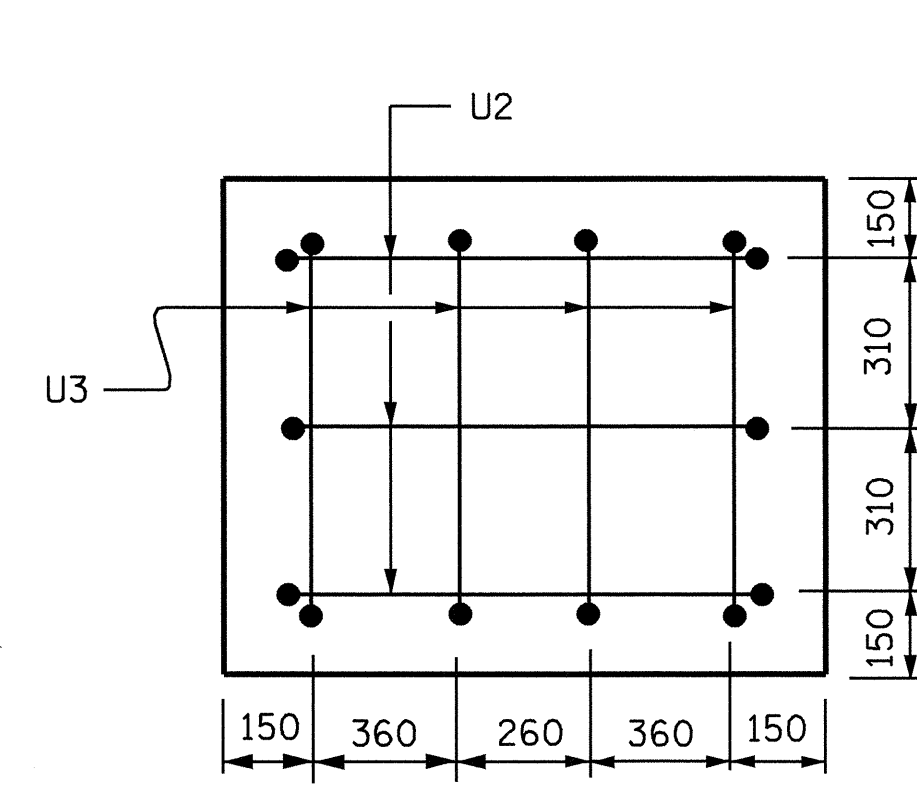
SECTION B-B



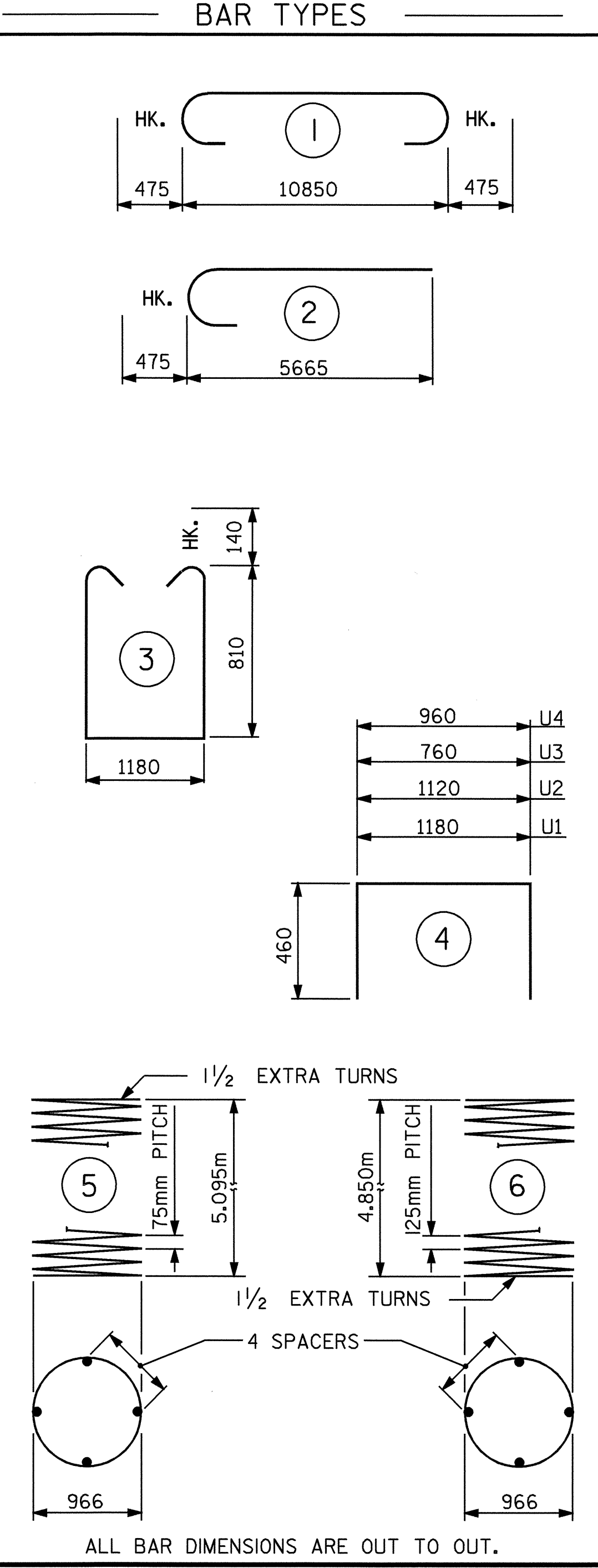
CONSTRUCTION JOINT DETAIL



LEFT END VIEW

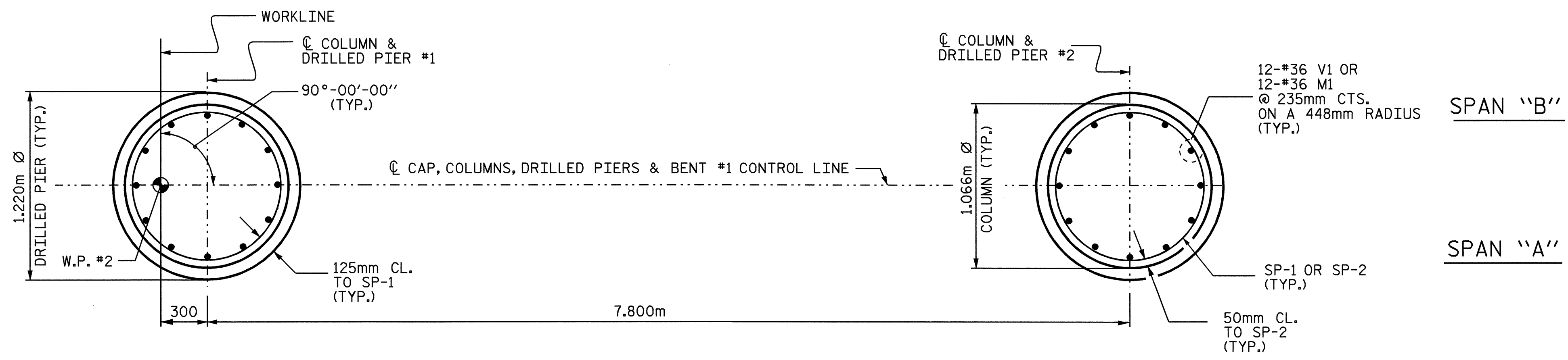


RIGHT END VIEW



ALL BAR DIMENSIONS ARE OUT TO OUT.

BILL OF MATERIAL					
BENT #1					
BAR NO.	SIZE	TYPE	LENGTH	WEIGHT	
B1	8	36	1	11800	746
B2	8	36	STR	10900	689
B3	4	16	STR	10900	68
B4	8	13	STR	4280	34
M1	24	36	STR	8120	1541
S1	59	16	3	3080	282
U1	32	13	4	2100	67
U2	6	13	4	2040	12
U3	4	13	4	1680	7
U4	4	13	4	1880	7
V1	24	36	2	6140	1165
REINFORCING STEEL			KG	4618	
SP-1	2	*	6	119860	372
SP-2	2	**	5	208160	414
SPIRAL COLIMN REINF. STEEL			KG	786	
CLASS "A" CONCRETE					
POUR #2 COLUMNS			m <sup>3</sup>	9.0	
POUR #3 CAP			m <sup>3</sup>	14.0	
TOTAL CLASS "A" CONCRETE			m <sup>3</sup>	23.0	
DRILLED PIER CONCRETE					
POUR #1 DRILLED PIERS			m <sup>3</sup>	11.7	
1.220m Ø DRILLED PIERS IN SOIL					
				5.4m	
1.220m Ø DRILLED PIERS NOT IN SOIL					
				4.6m	
PERMANENT STEEL CASING FOR 1.220m Ø DRILLED PIER					
				3.4m	
CSL TUBES					
				46.8m	



PLAN OF COLUMNS & DRILLED PIERS

PROJECT NO. R-2206C  
 LINCOLN-CATAWBA COUNTY  
 STATION: 223+03.850 -L-

SHEET 2 OF 2



STATE OF NORTH CAROLINA  
 DEPARTMENT OF TRANSPORTATION  
 RALEIGH

SUBSTRUCTURE  
 BENT #1  
 RIGHT LANE

DRAWN BY: C.MILLER DATE: 02-04  
 CHECKED BY: T.L.AVERETTE DATE: 5-04

REVISIONS						SHEET NO.
NO.	BY:	DATE:	NO.	BY:	DATE:	TOTAL SHEETS
1			3			5-185
2			4			374