

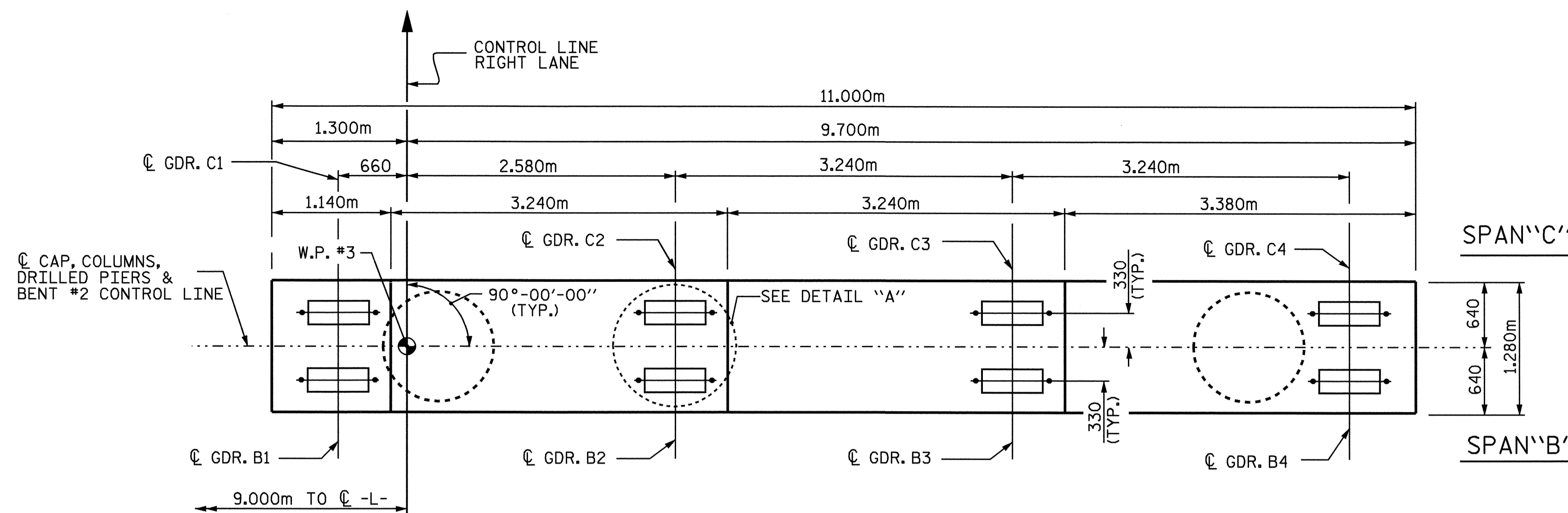
NOTES:

STIRRUPS IN CAP MAY BE SHIFTED AS NECESSARY TO CLEAR ANCHOR BOLTS.

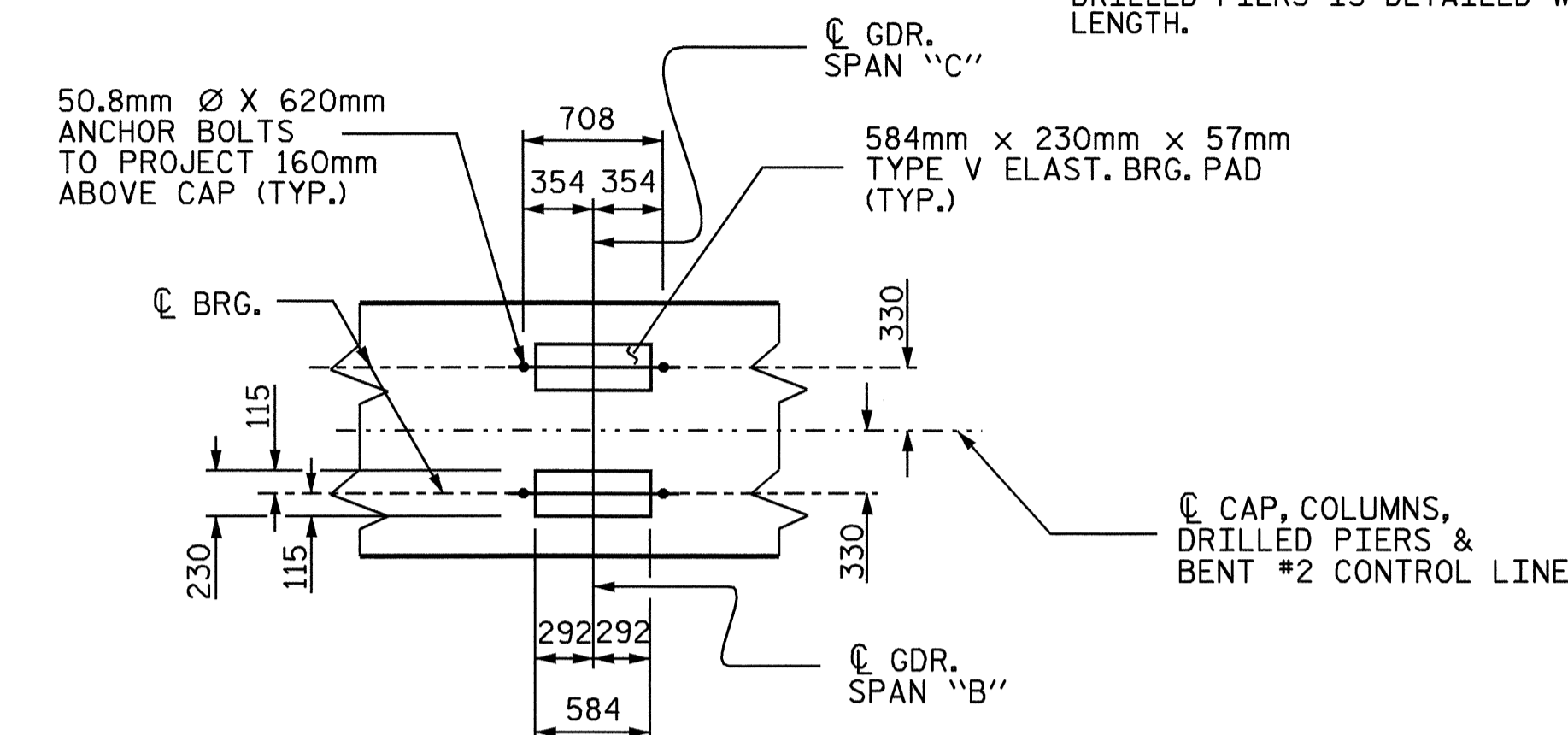
HOOKS ON "V" BARS MAY BE TURNED AS NECESSARY FOR PLACING REINFORCING STEEL.

ALL STEEL IN THE DRILLED PIERS IS INCLUDED IN THE PAY ITEMS FOR "REINFORCING STEEL" AND "SPIRAL COLUMN REINFORCING STEEL".

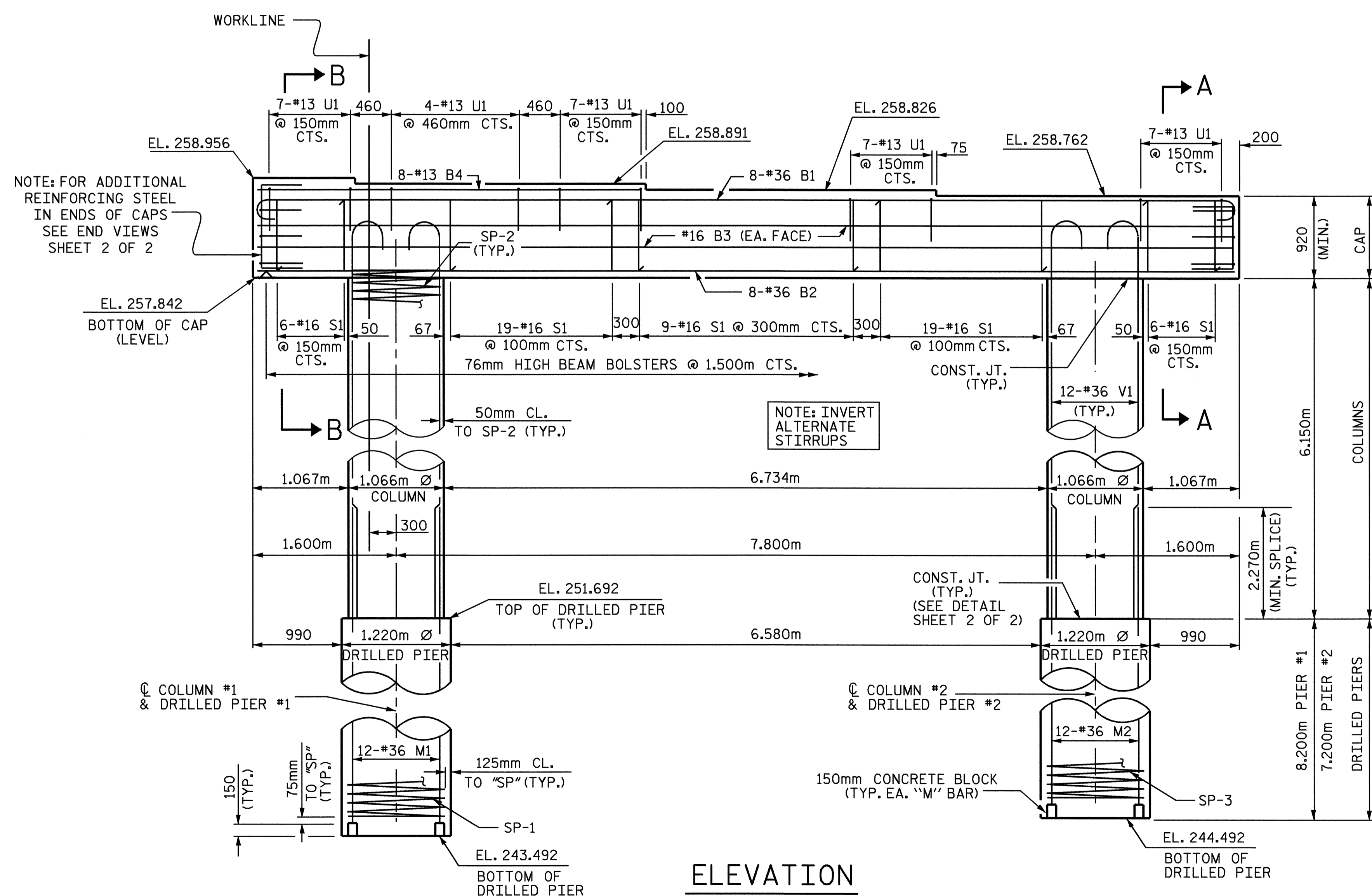
THE CONTRACTOR'S ATTENTION IS CALLED TO THE FACT THAT THE LONGITUDINAL REINFORCEMENT FOR THE DRILLED PIERS IS DETAILED WITH ONE METER OF EXTRA LENGTH.



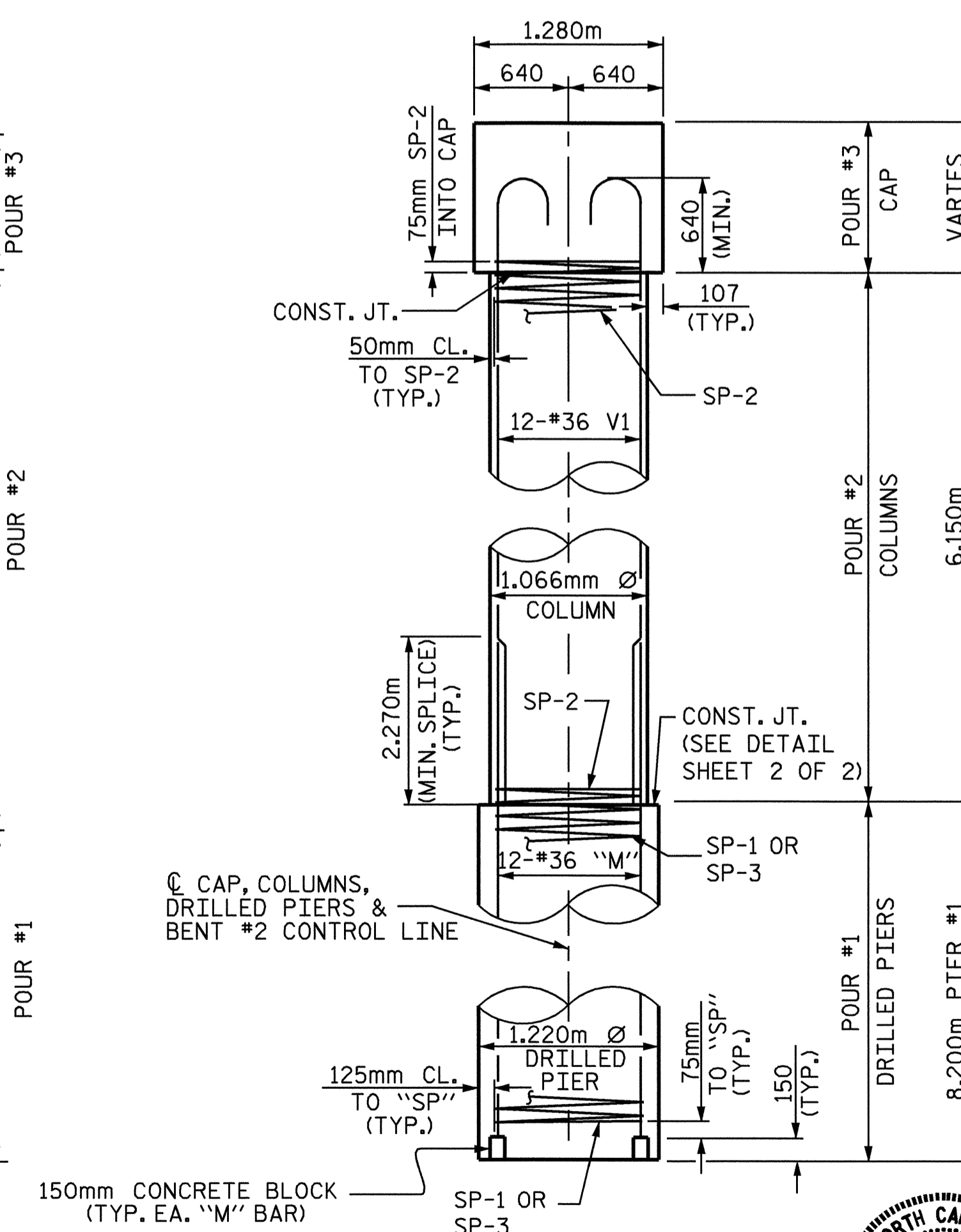
PLAN



DETAIL "A"
(TYP. EA. GDR.)



ELEVATION



END ELEVATION

NOTE: FOR ADDITIONAL REINFORCING STEEL IN ENDS OF CAPS SEE END VIEWS SHEET 2 OF 2

NOTE: INVERT ALTERNATE STIRRUPS

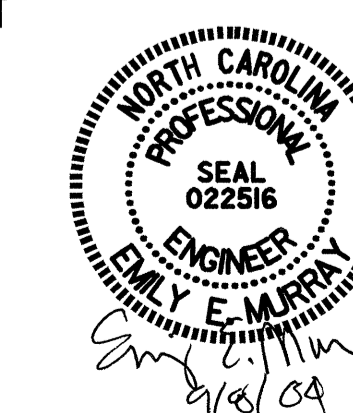
© CAP, COLUMNS, DRILLED PIERS & BENT #2 CONTROL LINE

PROJECT NO. R-2206C
LINCOLN-CATAWBA COUNTY
STATION: 223+03.850 -L-

SHEET 1 OF 2

STATE OF NORTH CAROLINA
DEPARTMENT OF TRANSPORTATION
RALEIGH

SUBSTRUCTURE
BENT #2
RIGHT LANE



REVISIONS				SHEET NO.	
NO.	BY:	DATE:	NO.	BY:	DATE:
1			3		
2			4		

TOTAL SHEETS: 374

DRAWN BY: C. MILLER DATE: 02-04
CHECKED BY: J. AVERETTE DATE: 05-04

07-SEP-2004 10:59
W:\squad\2206c\Final Plans\Str. I0\R2206C_SD_B2_I0.dgn
derutcher

STR.#10