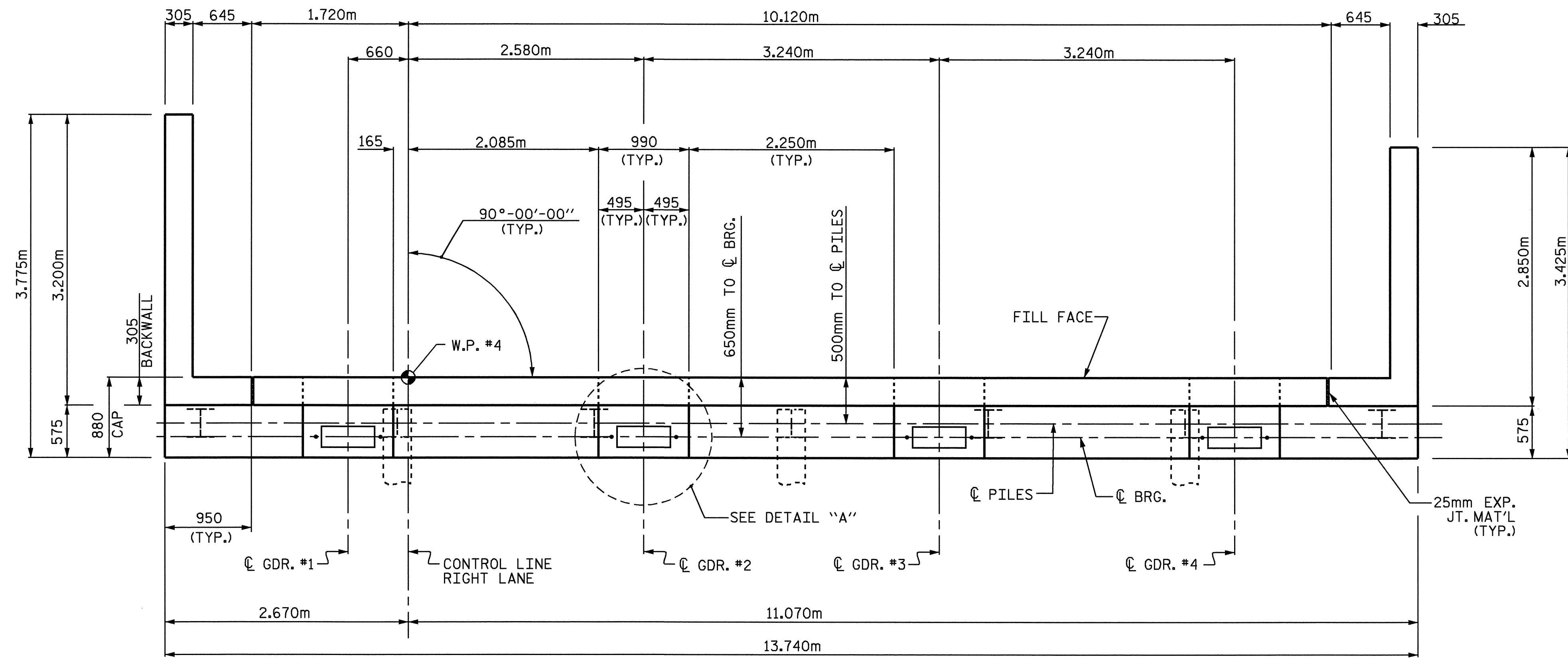
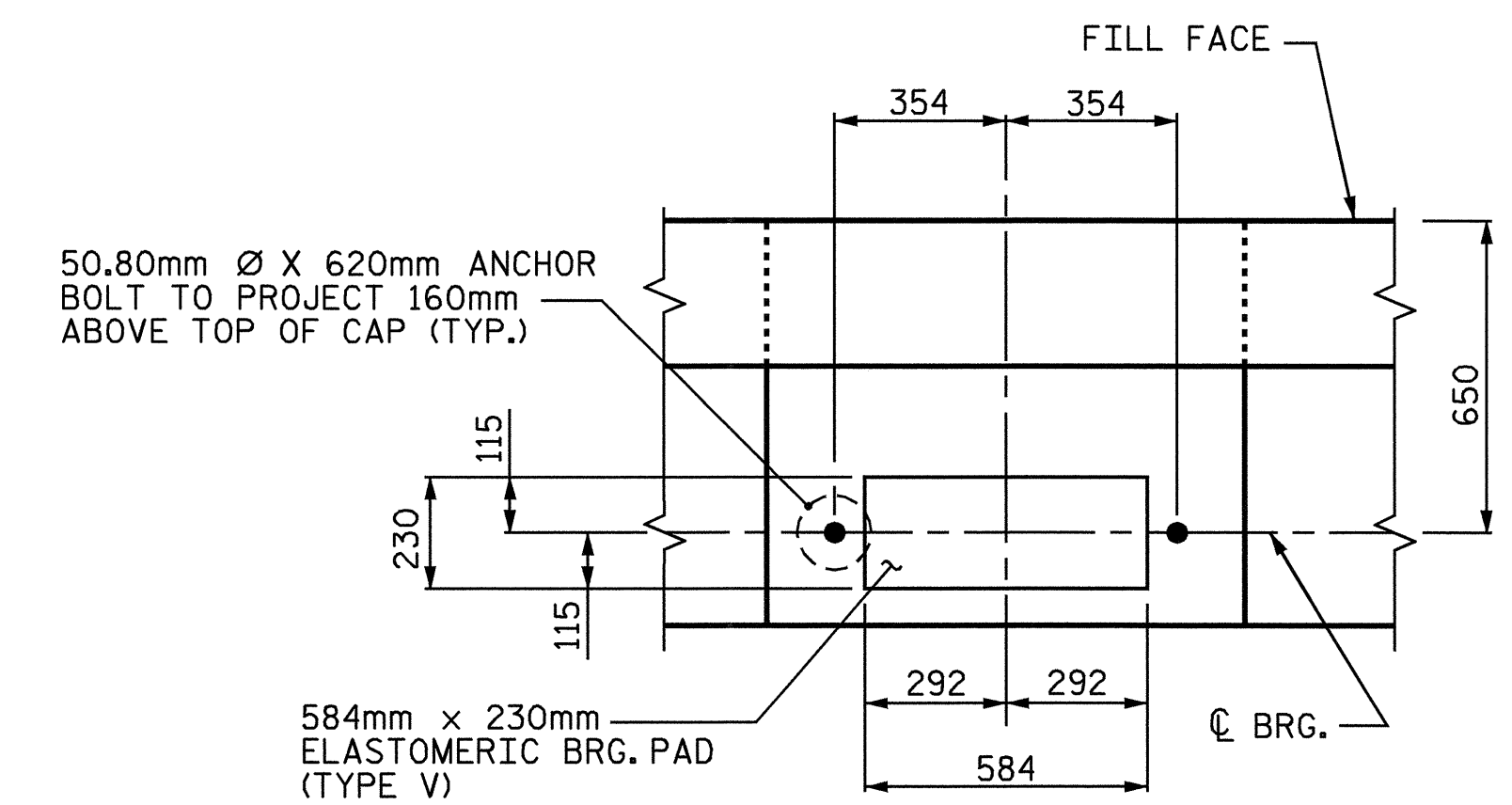


NOTES

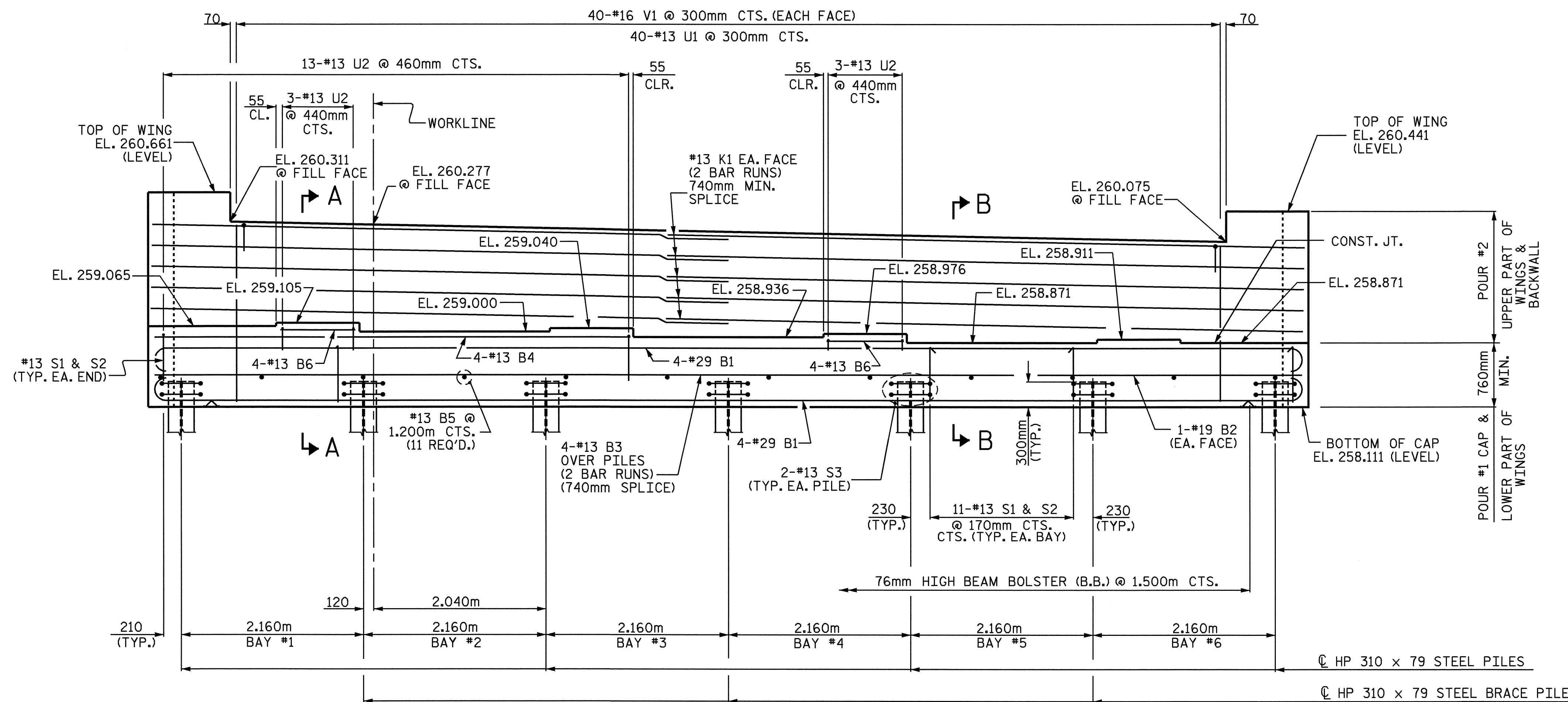
- STIRRUPS IN CAP MAY BE SHIFTED AS NECESSARY TO ANCHOR BOLTS.
- FOR EPOXY PROTECTIVE COATINGS, SEE SPECIAL PROVISIONS.
- BACKWALL SHALL BE PLACED BEFORE APPLYING THE EPOXY PROTECTIVE COATING.
- THE TOP SURFACE OF THE END BENT CAPS SHALL BE CURED IN ACCORDANCE WITH THE STANDARD SPECIFICATIONS EXCEPT THE MEMBRANE CURING COMPOUND METHOD SHALL NOT BE USED.
- THE TOP SURFACE OF THE CAP EXCEPT THE BRIDGE SEAT BUILD-UPS SHALL BE SLOPED TRANSVERSELY FROM THE FILL FACE TO THE BACK FACE AT THE RATE OF 2%.
- THE CONTRACTOR SHALL PROVIDE FOR INSTALLATION OF THE 102mm DIAMETER DRAIN PIPE THROUGH THE WING WALL AS REQUIRED FOR REINFORCED BRIDGE APPROACH FILLS, SEE THE ROADWAY PLANS. REINFORCING STEEL IN THE WING WALL MAY BE SHIFTED AS NECESSARY TO CLEAR THE DRAIN PIPE.



PLAN



DETAIL 'A'
(TYP. EA. GDR.)



ELEVATION

PROJECT NO. R-2206C
LINCOLN-CATAWBA COUNTY
STATION: 223+03.850-L-

SHEET 1 OF 3

STATE OF NORTH CAROLINA
DEPARTMENT OF TRANSPORTATION
RALEIGH

SUBSTRUCTURE
END BENT #2
RIGHT LANE



Emily E. Merry
9/8/04

REVISIONS						SHEET NO.
NO.	BY:	DATE:	NO.	BY:	DATE:	S-188
1			3			TOTAL SHEETS
2			4			374

DRAWN BY : M.D.PISO DATE : 02/2004
CHECKED BY : P.ADKINS DATE : 07/2004

07-SEP-2004 10:59
W:\squadda\2206c\Final Plans\Str. 10\2206c.sd_EB2_I0.dgn
dcrutcher

STR. #10