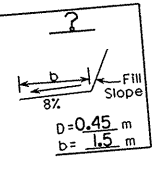
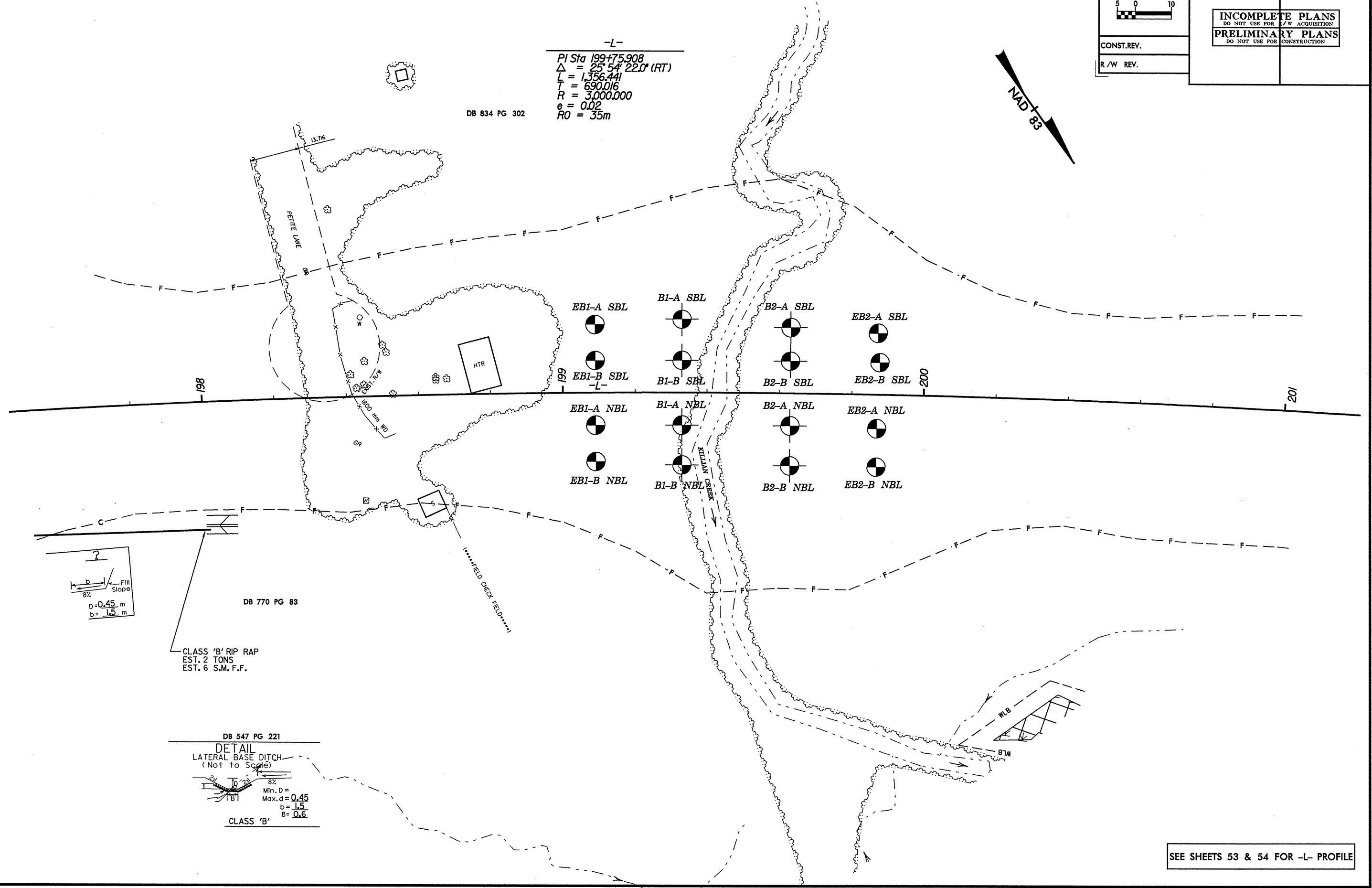
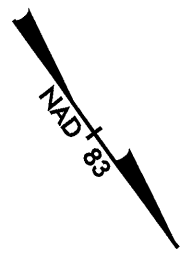
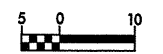
	PROJECT REFERENCE NO.	SHEET NO.
	K-2206C	3
R/W SHEET NO.		
ROADWAY DESIGN ENGINEER	HYDRAULICS ENGINEER	
INCOMPLETE PLANS <small>DO NOT USE FOR R/W ACQUISITION</small> PRELIMINARY PLANS <small>DO NOT USE FOR CONSTRUCTION</small>		
CONST. REV.		
R/W REV.		

-L-

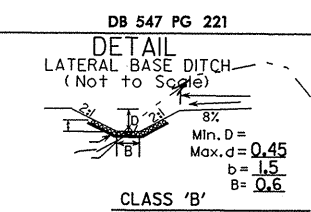
PI Sta 199+75.908
 $\Delta = 25^\circ 54' 22.0''$ (RT)
 $L = 1,356.441$
 $T = 690.016$
 $R = 3,000.000$
 $e = 0.02$
 $RO = 35m$

DB 834 PG 302



DB 770 PG 83

CLASS 'B' RIP RAP
 EST. 2 TONS
 EST. 6 S.M. F.F.



SEE SHEETS 53 & 54 FOR -L- PROFILE