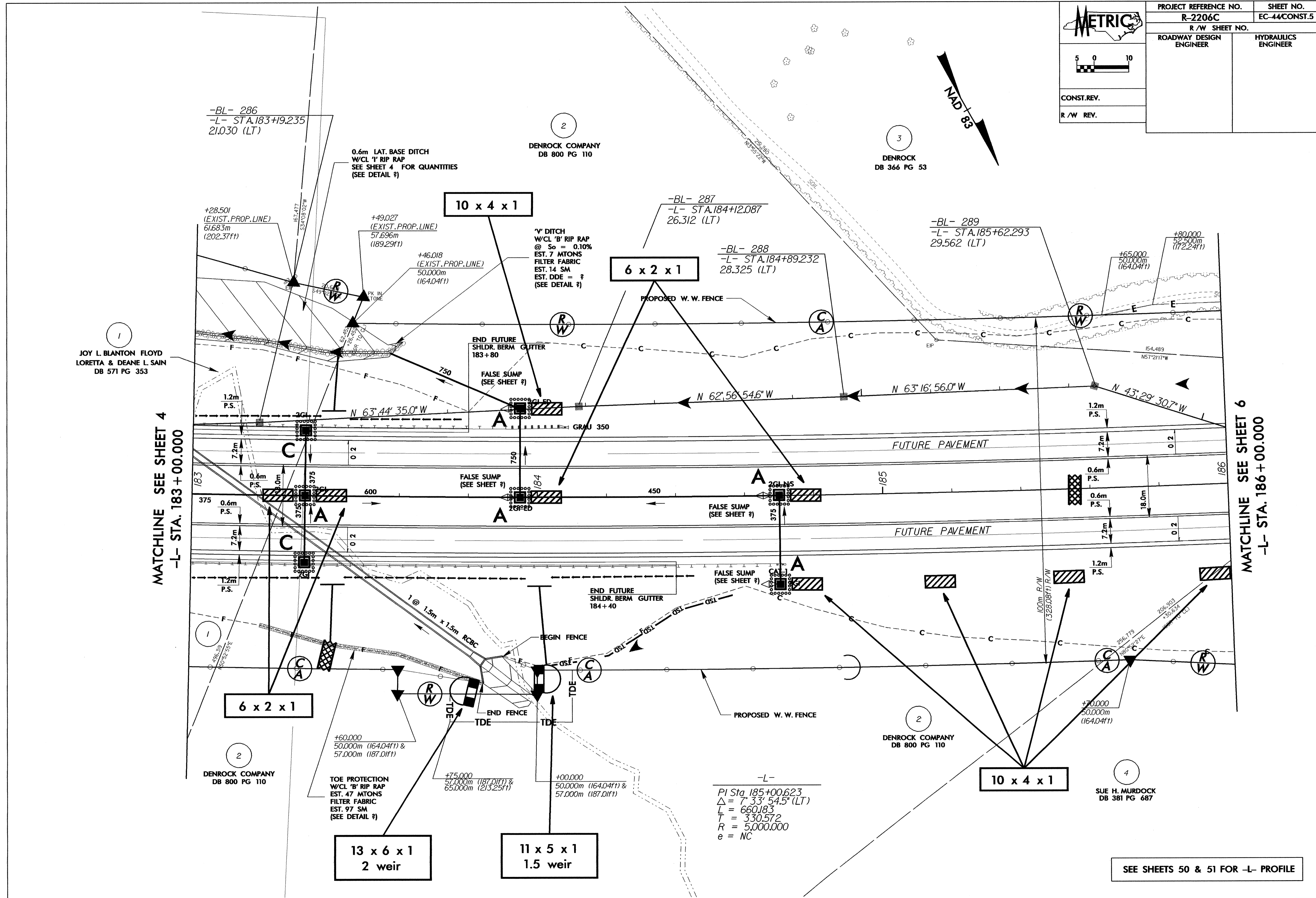
 5 0 10 CONST. REV. R / W REV.	PROJECT REFERENCE NO.	SHEET NO.
	R-2206C	EC-44/CONST.5
	ROADWAY DESIGN ENGINEER	HYDRAULICS ENGINEER



JOY L. BLANTON FLOYD
LORETTA & DEANE L. SAIN
DB 571 PG 353

DENROCK COMPANY
DB 800 PG 110

DENROCK
DB 366 PG 53

-BL- 286
-L- STA. 183+19.235
21.030 (LT)

-BL- 287
-L- STA. 184+12.087
26.312 (LT)

-BL- 289
-L- STA. 185+62.293
29.562 (LT)

-BL- 288
-L- STA. 184+89.232
28.325 (LT)

+80.000
50.000m
(164.04ft)

+28.501
(EXIST. PROP. LINE)
61.683m
(202.37ft)

+49.027
(EXIST. PROP. LINE)
57.696m
(189.29ft)

+46.018
(EXIST. PROP. LINE)
50.000m
(164.04ft)

+65.000
50.000m
(164.04ft)

MATCHLINE SEE SHEET 4
-L- STA. 183 + 00.000

MATCHLINE SEE SHEET 6
-L- STA. 186 + 00.000

6 x 2 x 1

10 x 4 x 1

13 x 6 x 1
2 weir

11 x 5 x 1
1.5 weir

-L-
PI Sta 185+00.623
 $\Delta = 7^{\circ} 33' 54.5''$ (LT)
L = 660.183
T = 330.572
R = 5,000.000
e = NC

SEE SHEETS 50 & 51 FOR -L- PROFILE

DENROCK COMPANY
DB 800 PG 110

DENROCK COMPANY
DB 800 PG 110

SUE H. MURDOCK
DB 381 PG 687

+60.000
50.000m (164.04ft) &
57.000m (187.01ft)

+75.000
57.000m (187.01ft) &
65.000m (213.25ft)

+100.000
50.000m (164.04ft) &
57.000m (187.01ft)

+70.000
50.000m
(164.04ft)