

**METRIC**

CONST. REV.  
R/W REV.

PROJECT REFERENCE NO. <b>R-2206C</b>	SHEET NO. <b>EC-45/CONST.6</b>
R/W SHEET NO.	
ROADWAY DESIGN ENGINEER	HYDRAULICS ENGINEER

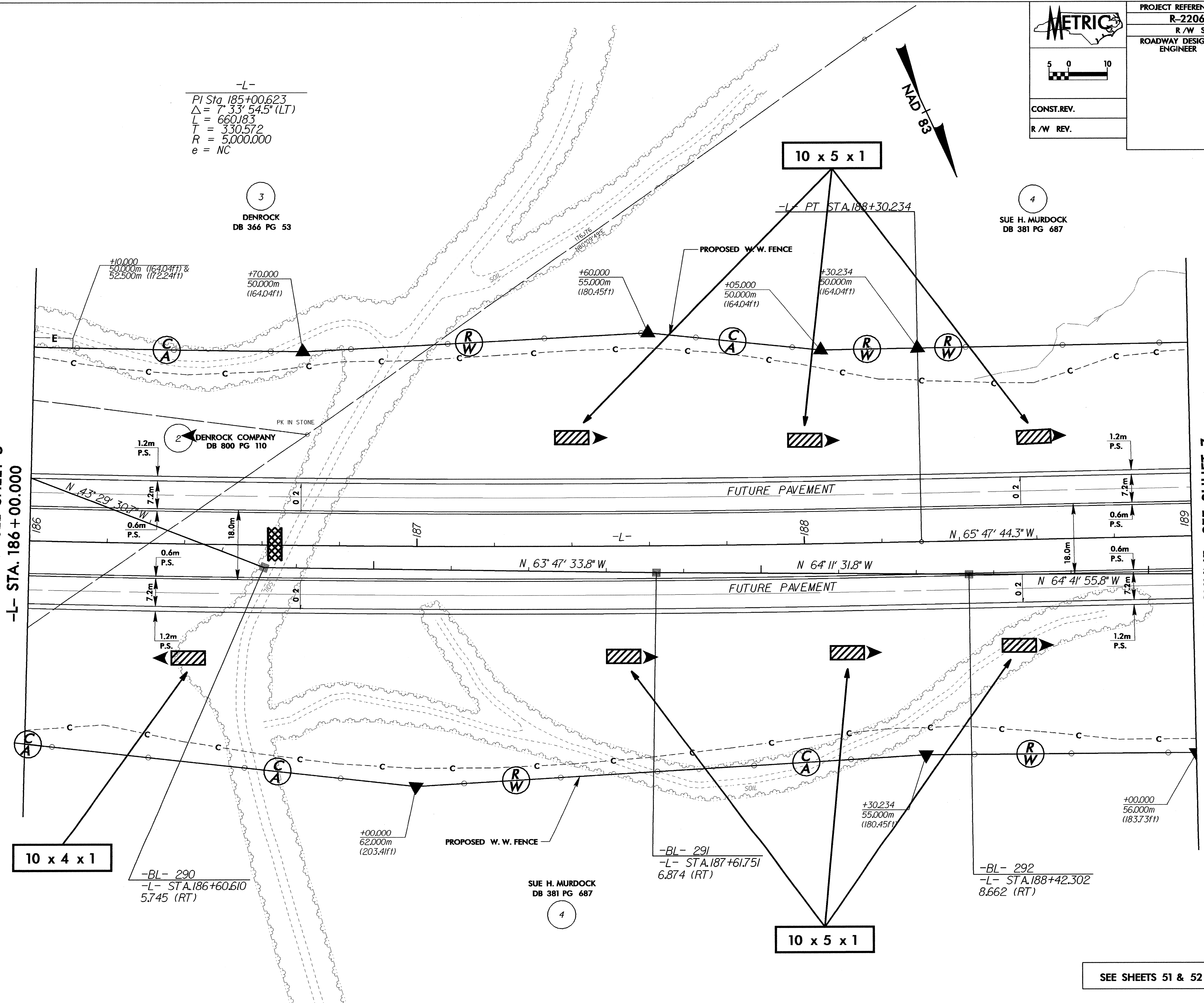
-L-  
 PI Sta 185+00.623  
 $\Delta = 7^{\circ} 33' 54.5" (LT)$   
 $L = 660.183$   
 $T = 330.572$   
 $R = 5,000.000$   
 $e = NC$

3  
 DENROCK  
 DB 366 PG 53

4  
 SUE H. MURDOCK  
 DB 381 PG 687

MATCHLINE SEE SHEET 5  
 -L- STA. 186+00.000

MATCHLINE SEE SHHET 7  
 -L- STA. 189+00.000



10 x 4 x 1

-BL- 290  
 -L- STA.186+60.610  
 5.745 (RT)

SUE H. MURDOCK  
 DB 381 PG 687

4

10 x 5 x 1

-BL- 291  
 -L- STA.187+61.751  
 6.874 (RT)

-BL- 292  
 -L- STA.188+42.302  
 8.662 (RT)

SEE SHEETS 51 & 52 FOR -L- PROFILE