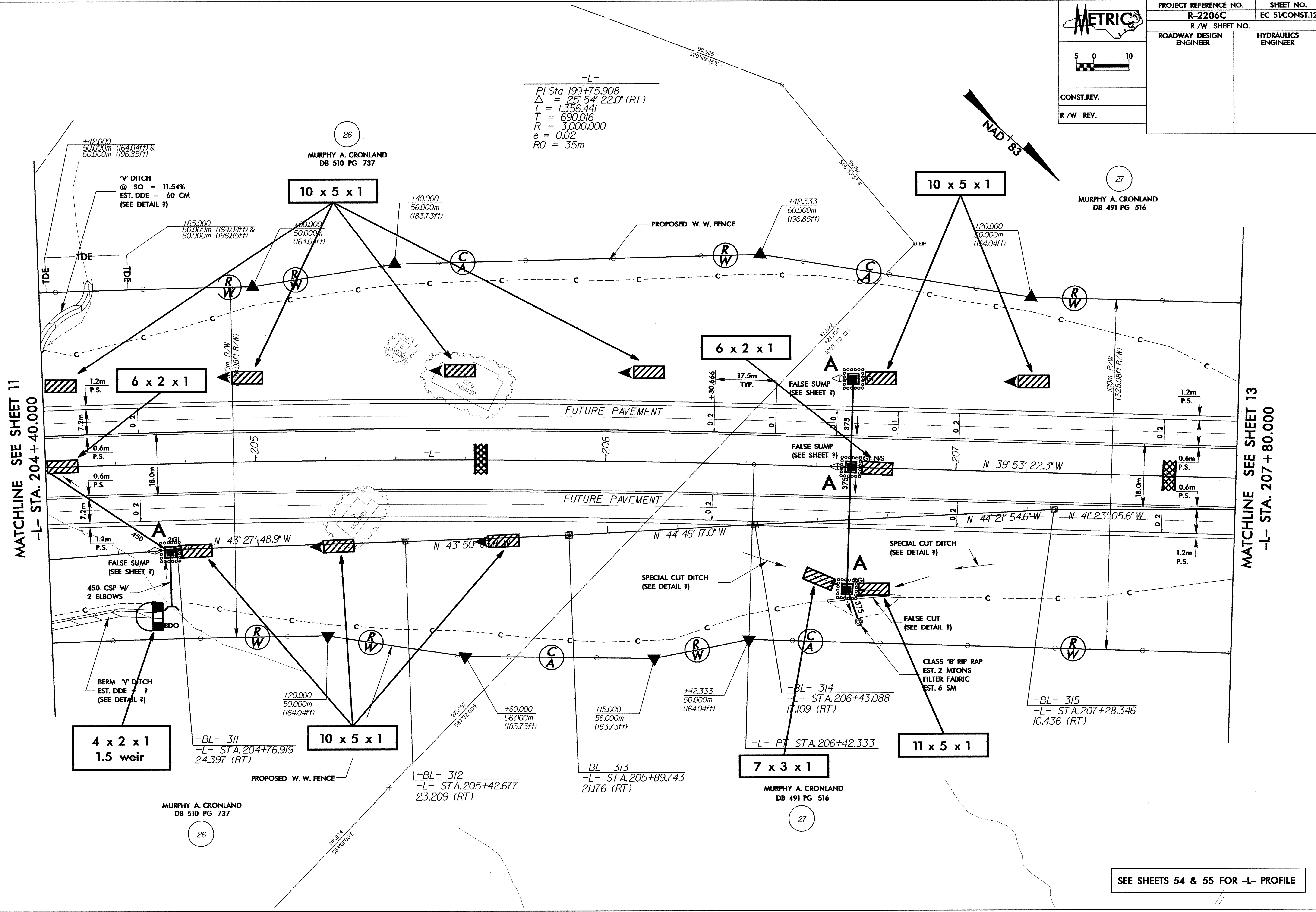
 5 0 10	PROJECT REFERENCE NO.	SHEET NO.
	R-2206C	EC-51/CONST.12
CONST. REV.	R/W SHEET NO.	
R/W REV.	ROADWAY DESIGN ENGINEER	HYDRAULICS ENGINEER

-L-
 PI Sta 199+75.908
 $\Delta = 25^{\circ} 54' 22.0''$ (RT)
 $L = 1,356.441$
 $T = 690.016$
 $R = 3,000.000$
 $e = 0.02$
 $RO = 35m$



SEE SHEETS 54 & 55 FOR -L- PROFILE