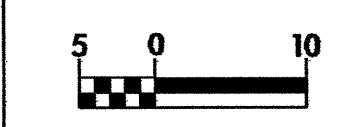


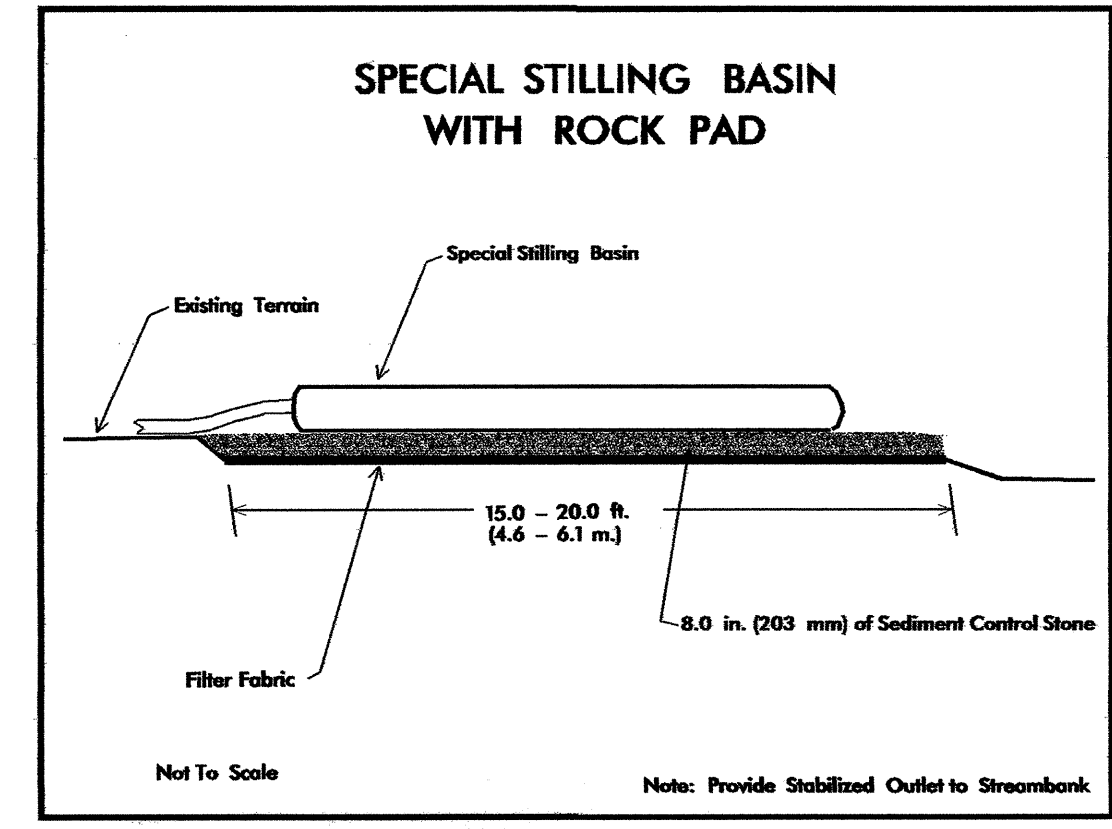
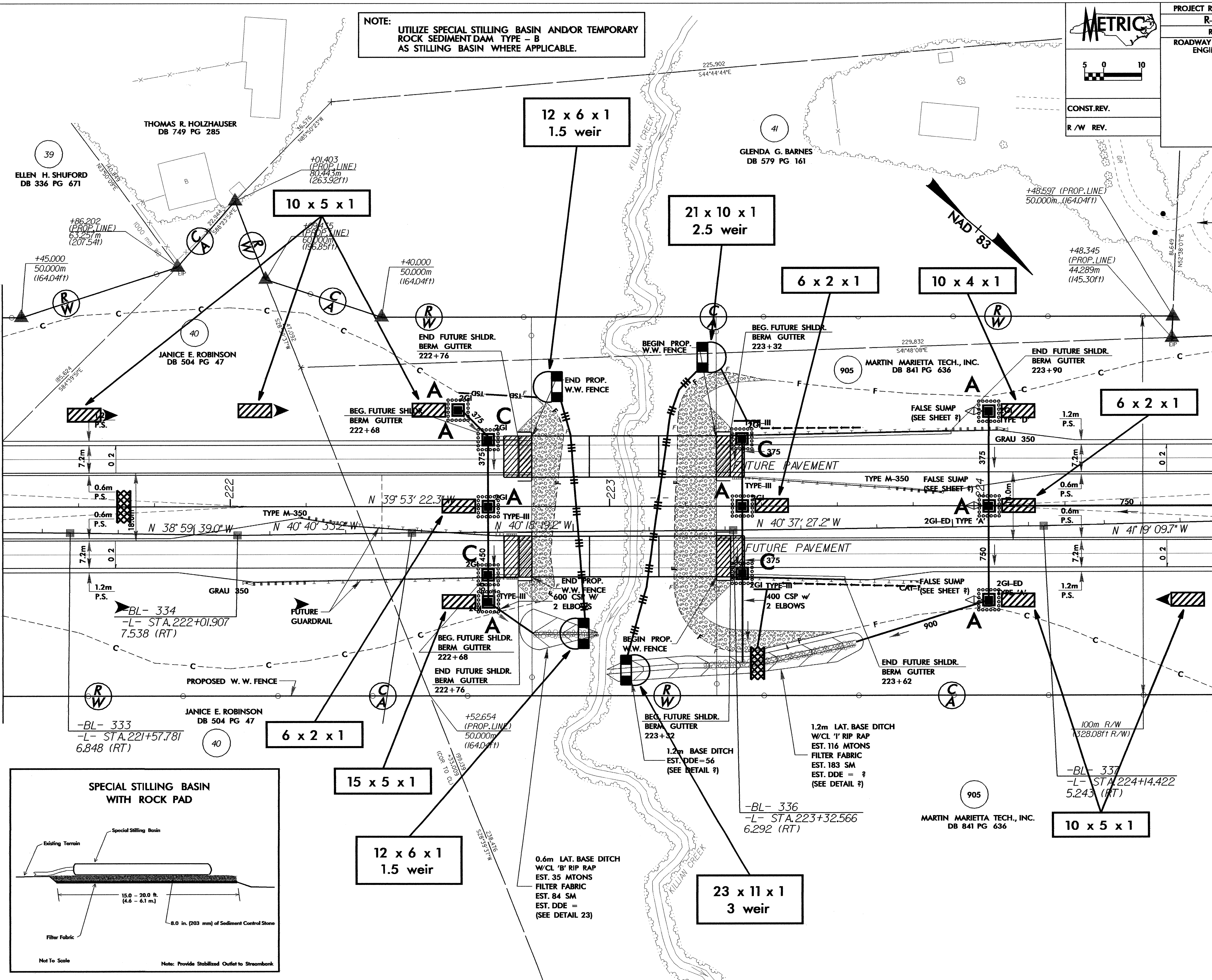
PROJECT REFERENCE NO. R-2206C		SHEET NO. EC-56/CONST.17	
R/W SHEET NO.		HYDRAULICS ENGINEER	
ROADWAY DESIGN ENGINEER		HYDRAULICS ENGINEER	
CONST. REV.			
R/W REV.			

NOTE: UTILIZE SPECIAL STILLING BASIN AND/OR TEMPORARY ROCK SEDIMENT DAM TYPE - B AS STILLING BASIN WHERE APPLICABLE.



MATCHLINE SEE SHEET 16  
-L- STA. 221+40.000

MATCHLINE SEE SHEET 18  
-L- STA. 224+60.000



0.6m LAT. BASE DITCH  
W/CL 'B' RIP RAP  
EST. 35 MTONS  
FILTER FABRIC  
EST. 84 SM  
EST. DDE =  
(SEE DETAIL 23)

1.2m LAT. BASE DITCH  
W/CL '1' RIP RAP  
EST. 116 MTONS  
FILTER FABRIC  
EST. 183 SM  
EST. DDE = ?  
(SEE DETAIL ?)

23 x 11 x 1  
3 weir