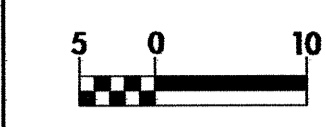
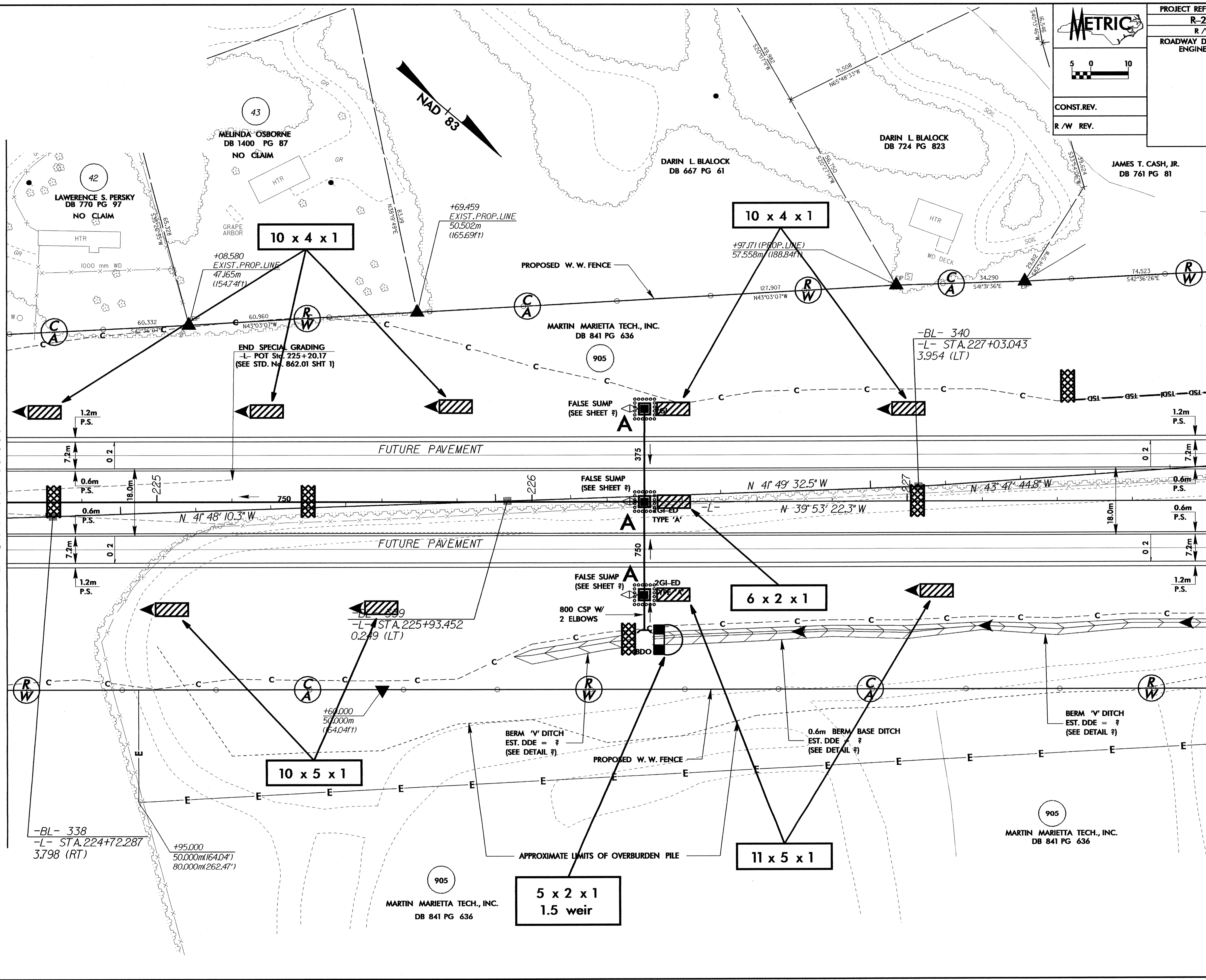
	PROJECT REFERENCE NO.	SHEET NO.
	R-2206C	EC-57/CONST.18
	R/W SHEET NO.	HYDRAULICS ENGINEER
	ROADWAY DESIGN ENGINEER	
CONST. REV.		
R/W REV.		



MATCHLINE SEE SHEET 17
-L- STA. 224 + 60.000

MATCHLINE SEE SHEET 19
-L- STA. 227 + 80.000



-BL- 338
-L- STA. 224+72.287
3.798 (RT)

+95,000
50,000m (164.04')
80,000m (262.47')

10 x 5 x 1

-L- STA. 225+93.452
0.249 (LT)

5 x 2 x 1
1.5 weir

11 x 5 x 1

6 x 2 x 1

10 x 4 x 1

10 x 4 x 1

+69.459
EXIST. PROP. LINE
50.502m
(165.69ft)

+97.171 (PROP. LINE)
57.558m (188.84ft)

END SPECIAL GRADING
-L- POT Sta. 225+20.17
(SEE STD. No. 862.01 SHT 1)

-BL- 340
-L- STA. 227+03.043
3.954 (LT)

MARTIN MARIETTA TECH., INC.
DB 841 PG 636

MARTIN MARIETTA TECH., INC.
DB 841 PG 636

LAWRENCE S. PERSKY
DB 770 PG 97
NO CLAIM

MELINDA OSBORNE
DB 1400 PG 87
NO CLAIM

DARIN L. BLALOCK
DB 667 PG 61

DARIN L. BLALOCK
DB 724 PG 823

JAMES T. CASH, JR.
DB 761 PG 81

MARTIN MARIETTA TECH., INC.
DB 841 PG 636

NAD 83

N 41° 48' 10.3" W

N 41° 49' 32.5" W

N 39° 53' 22.3" W

N 43° 47' 44.8" W

BERM 'V' DITCH
EST. DDE = ?
(SEE DETAIL ?)

0.6m BERM BASE DITCH
EST. DDE = ?
(SEE DETAIL ?)

BERM 'V' DITCH
EST. DDE = ?
(SEE DETAIL ?)

FALSE SUMP
(SEE SHEET ?)

FALSE SUMP
(SEE SHEET ?)

FALSE SUMP
(SEE SHEET ?)

APPROXIMATE LIMITS OF OVERBURDEN PILE

PROPOSED W.W. FENCE

PROPOSED W.W. FENCE

FUTURE PAVEMENT

FUTURE PAVEMENT

HTR

HTR

HTR

C

R/W

C

R/W

C

R/W

R/W

C

R/W

C

R/W

905

905

42

43

905

905

905

905

905