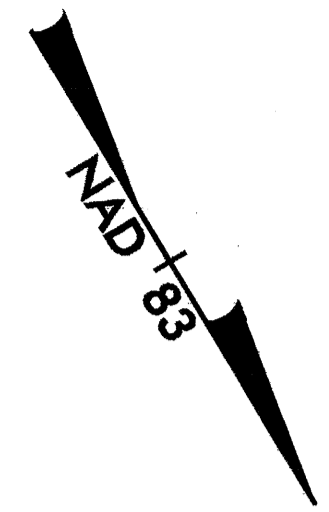


METRIC

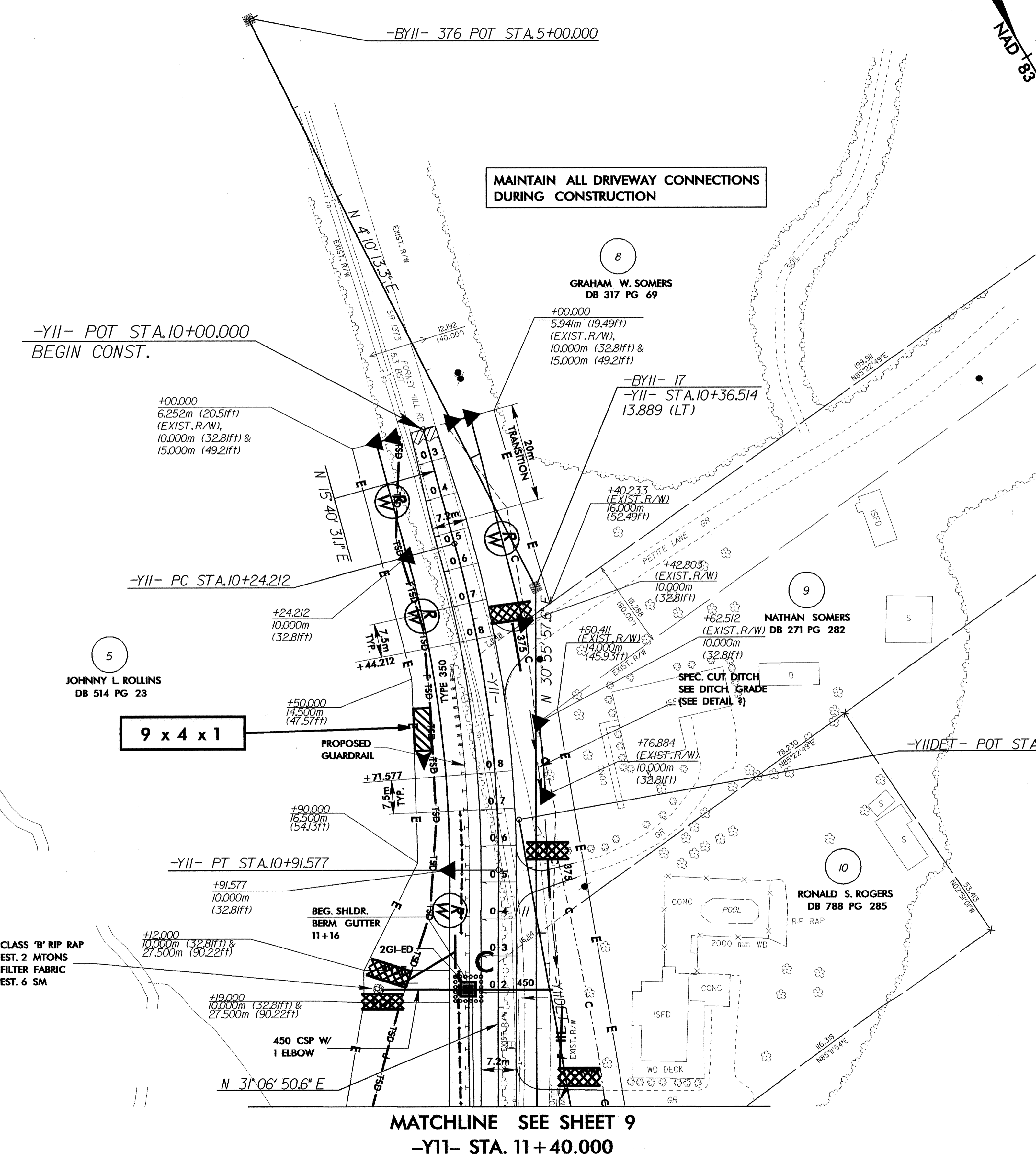
CONST. REV.
R / W REV.

PROJECT REFERENCE NO. R-2206C	SHEET NO. EC-72/CONST.33
R / W SHEET NO.	
ROADWAY DESIGN ENGINEER	HYDRAULICS ENGINEER



-YII-
PI Sta 10+58.100
 $\Delta = 15^{\circ} 26' 19.6" (RT)$
L = 67.364
T = 33.887
R = 250.000
e = 0.08
RO = 60m

CLASS 'B' RIP RAP
EST. 2 MTONS
FILTER FABRIC
EST. 6 SM



MAINTAIN ALL DRIVEWAY CONNECTIONS DURING CONSTRUCTION

--- -L & -YII- SLOPE STAKES
--- -YIIDE- SLOPE STAKES

SEE SHEET 73 FOR -YII- PROFILE
SEE SHEET 44 FOR -YII- DETOUR
SEE SHEET 74 FOR -YIIDE- PROFILE