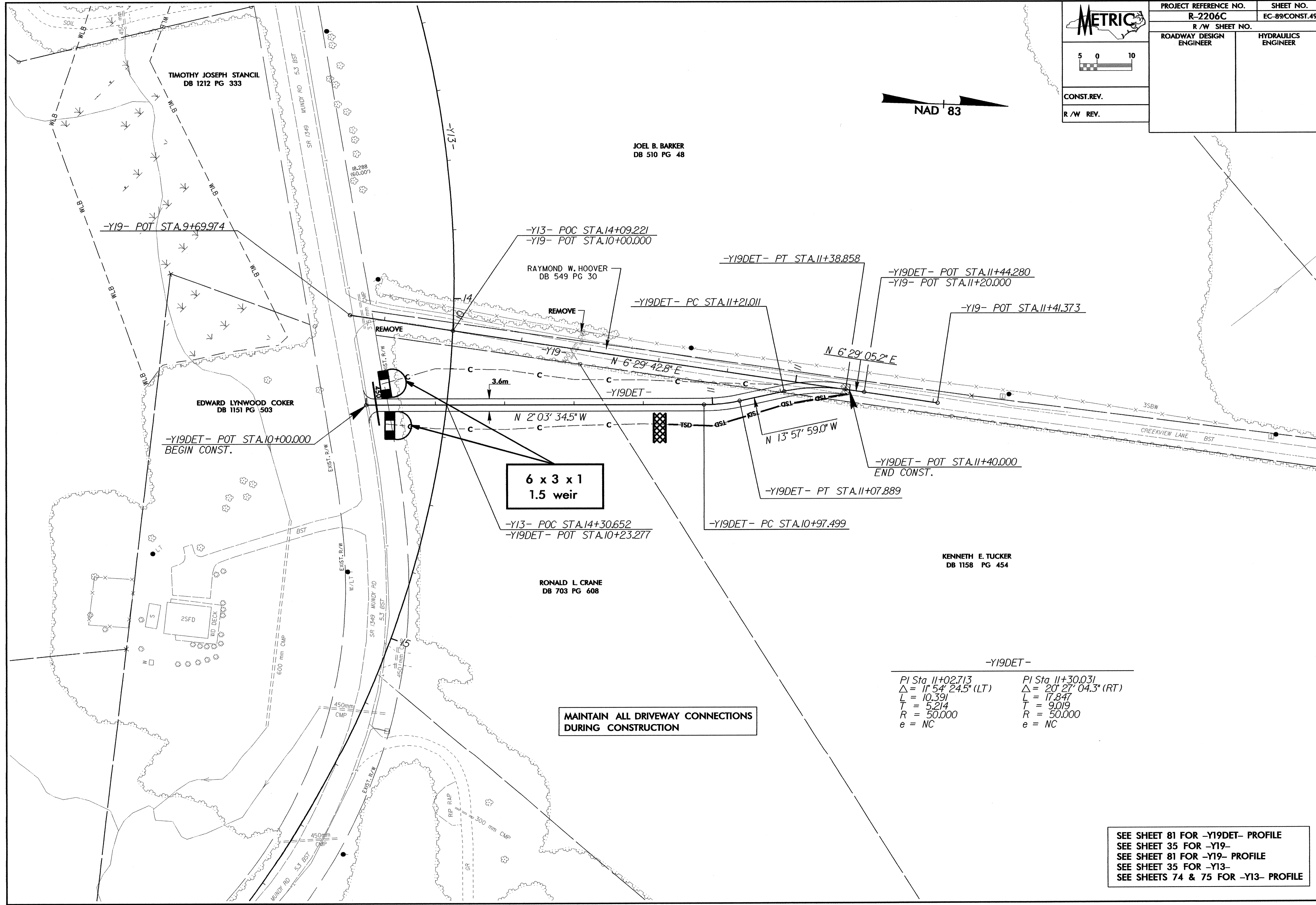
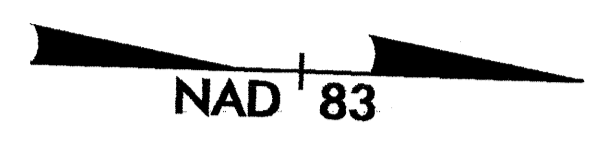
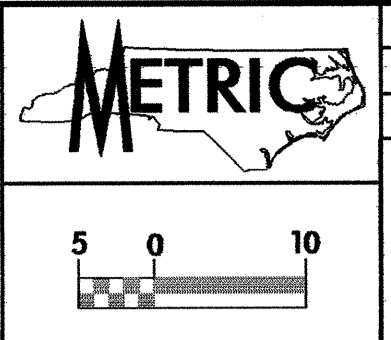


PROJECT REFERENCE NO.		SHEET NO.	
R-2206C		EC-89/CONST.49	
R/W SHEET NO.			
ROADWAY DESIGN ENGINEER		HYDRAULICS ENGINEER	
CONST. REV.			
R/W REV.			



**6 x 3 x 1
1.5 weir**

**MAINTAIN ALL DRIVEWAY CONNECTIONS
DURING CONSTRUCTION**

-Y19DET-
 PI Sta 11+02.713 PI Sta 11+30.031
 $\Delta = 11^{\circ} 54' 24.5''$ (LT) $\Delta = 20^{\circ} 27' 04.3''$ (RT)
 L = 10.391 L = 17.847
 T = 5.214 T = 9.019
 R = 50.000 R = 50.000
 e = NC e = NC

SEE SHEET 81 FOR -Y19DET- PROFILE
 SEE SHEET 35 FOR -Y19- PROFILE
 SEE SHEET 81 FOR -Y13- PROFILE
 SEE SHEETS 74 & 75 FOR -Y13- PROFILE