

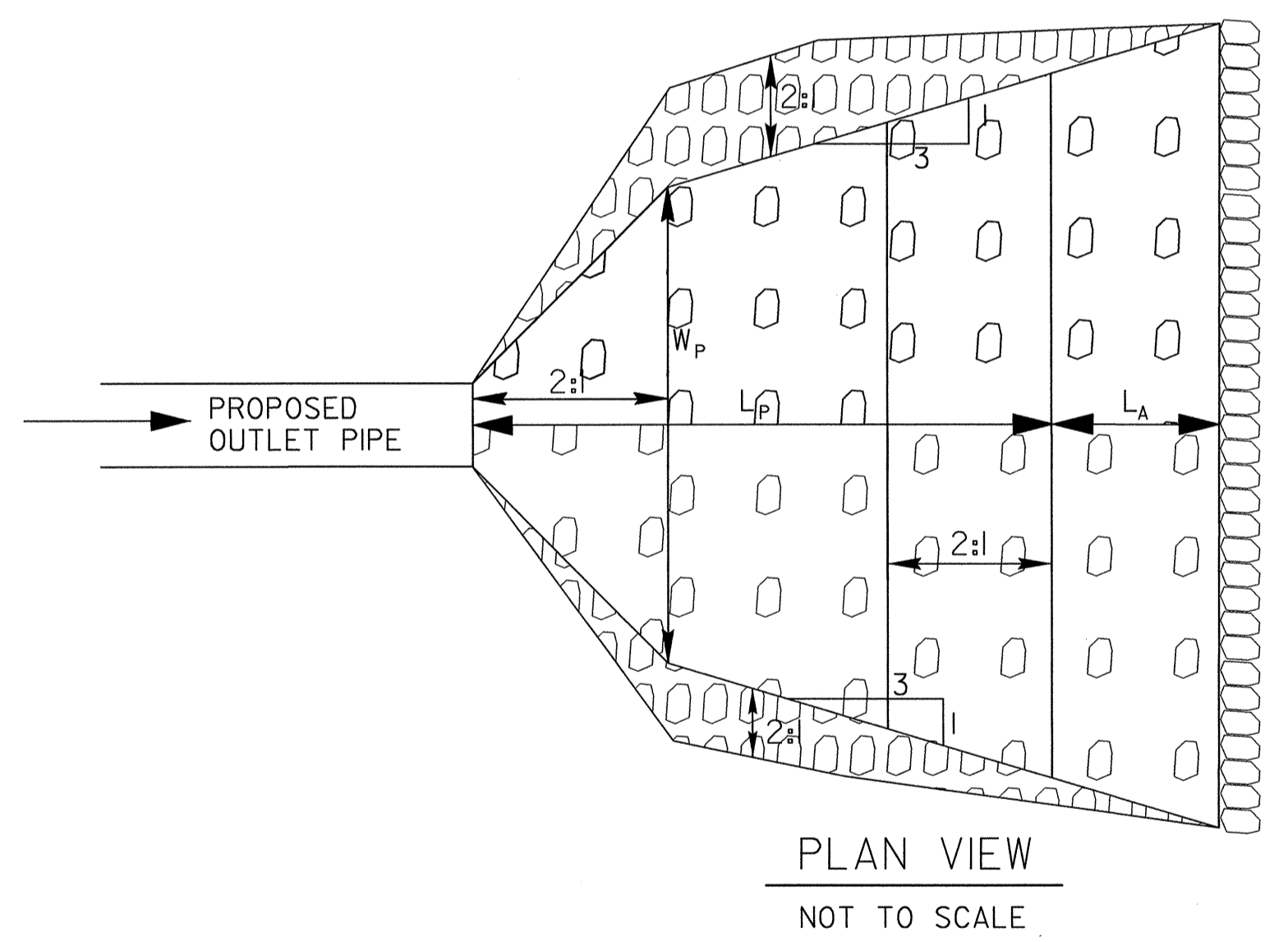
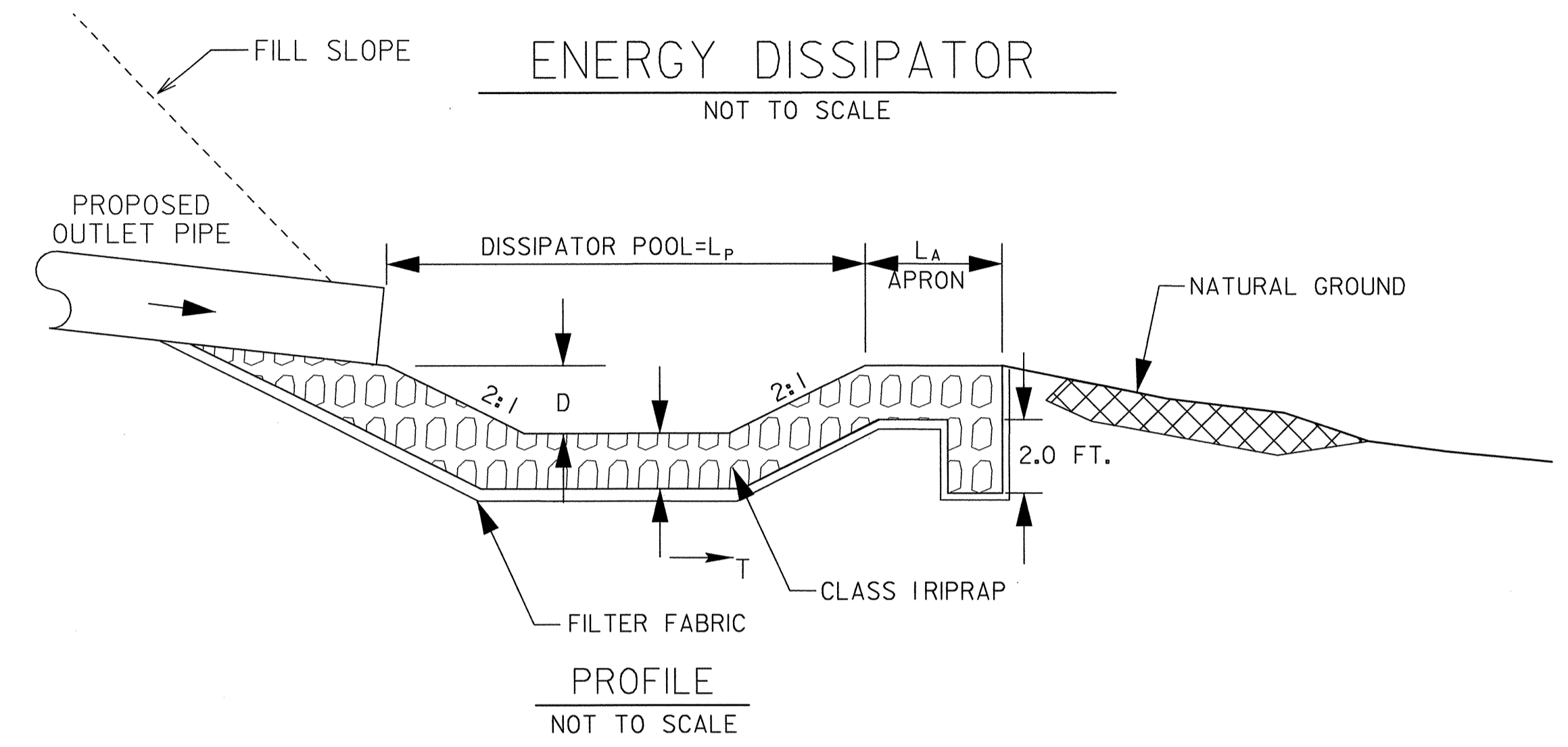


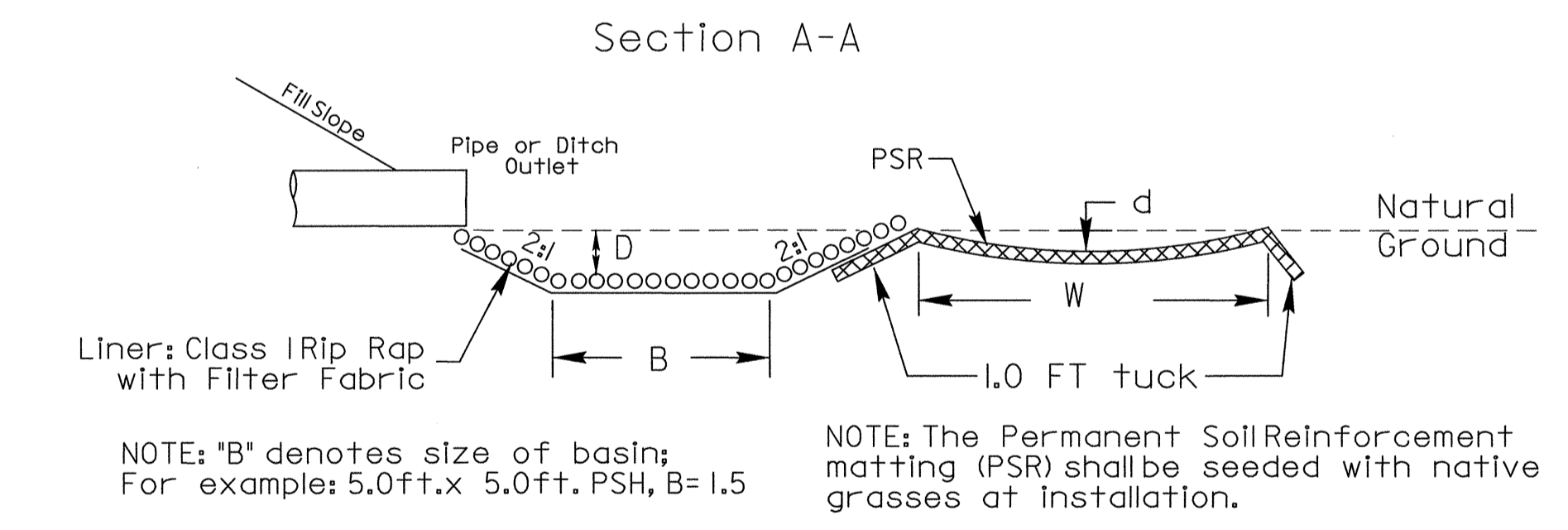
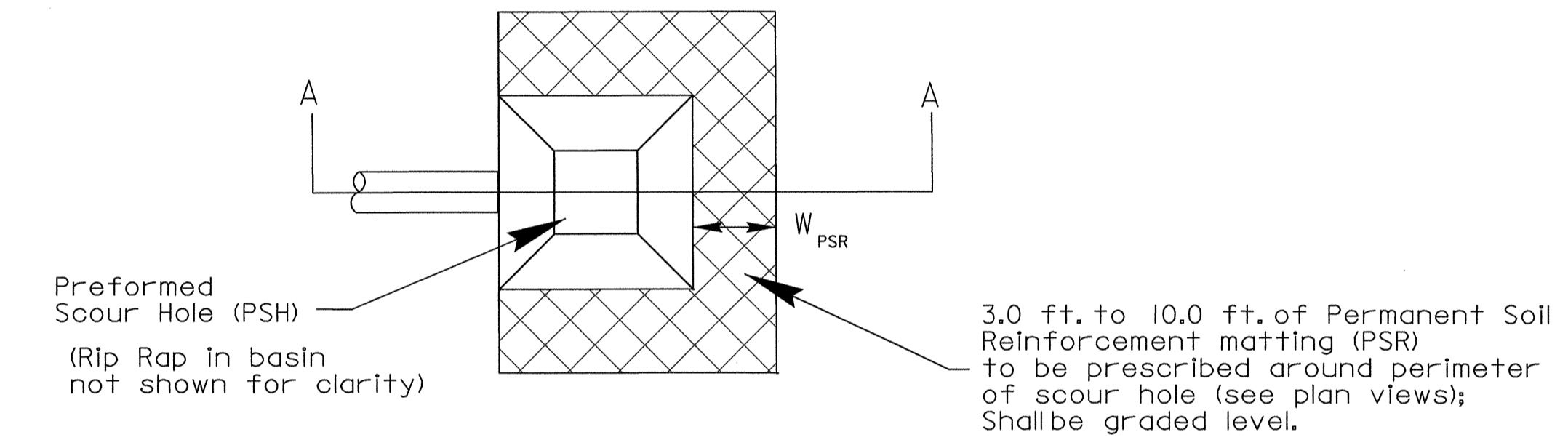
7/2/99

PROJECT REFERENCE NO. R-2417BB	SHEET NO. 2-D
R/W SHEET NO.	
ROADWAY DESIGN ENGINEER	HYDRAULICS ENGINEER
	
	
4915 Waters Edge Dr. Suite 295 Raleigh, N.C. 27606 Bus: 919 851 8077 Fax: 919 851 8107	
TRANSPORTATION PLANNING/DESIGN - BRIDGE/STRUCTURE DESIGN CIVIL/SITE DESIGN - GIS/GPS - CONSTRUCTION OBSERVATION	



STATION	L <sub>p</sub> FT.	W <sub>p</sub> FT.	L <sub>A</sub> FT.	T FT.	D FT.	CLASS I RIP RAP TONS	DDE (CU YD)	FILTER FABRIC (SQ YD)
10+90-RPC-RT	14	10	6	2.0	2.5	40	50	60
545+00-L-RT.	14	10	6	2.0	2.5	40	50	60

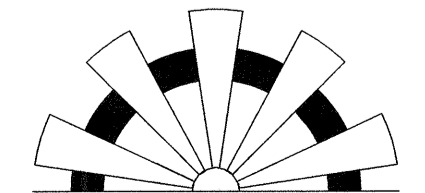
**PREFORMED SCOUR HOLE**  
(Not to scale)



STATION	B FT.	D FT.	W <sub>PSR</sub> FT.	d FT.	CLASS I RIP RAP TONS	DDE (CU YD)	FILTER FABRIC (SQ YD)
509+50-L-LT.	40X10	2.0	10	0.5	42	30	70
2+99-RPC-RT.	4.0	2.0	10	0.5	8	20	20
5+86-RPC-RT.	4.0	2.0	10	0.5	8	20	20

14-JUL-2004 09:06  
 E:\Roadway\Projects\2417BB-HYD-scour.dgn  
 B:\w\wetherill\B06ndr

**SUNGATE DESIGN GROUP, P.A.**



915 JONES FRANKLIN ROAD  
 RALEIGH, NORTH CAROLINA 27606  
 TEL (919) 859-2243 FAX (919) 859-6258