
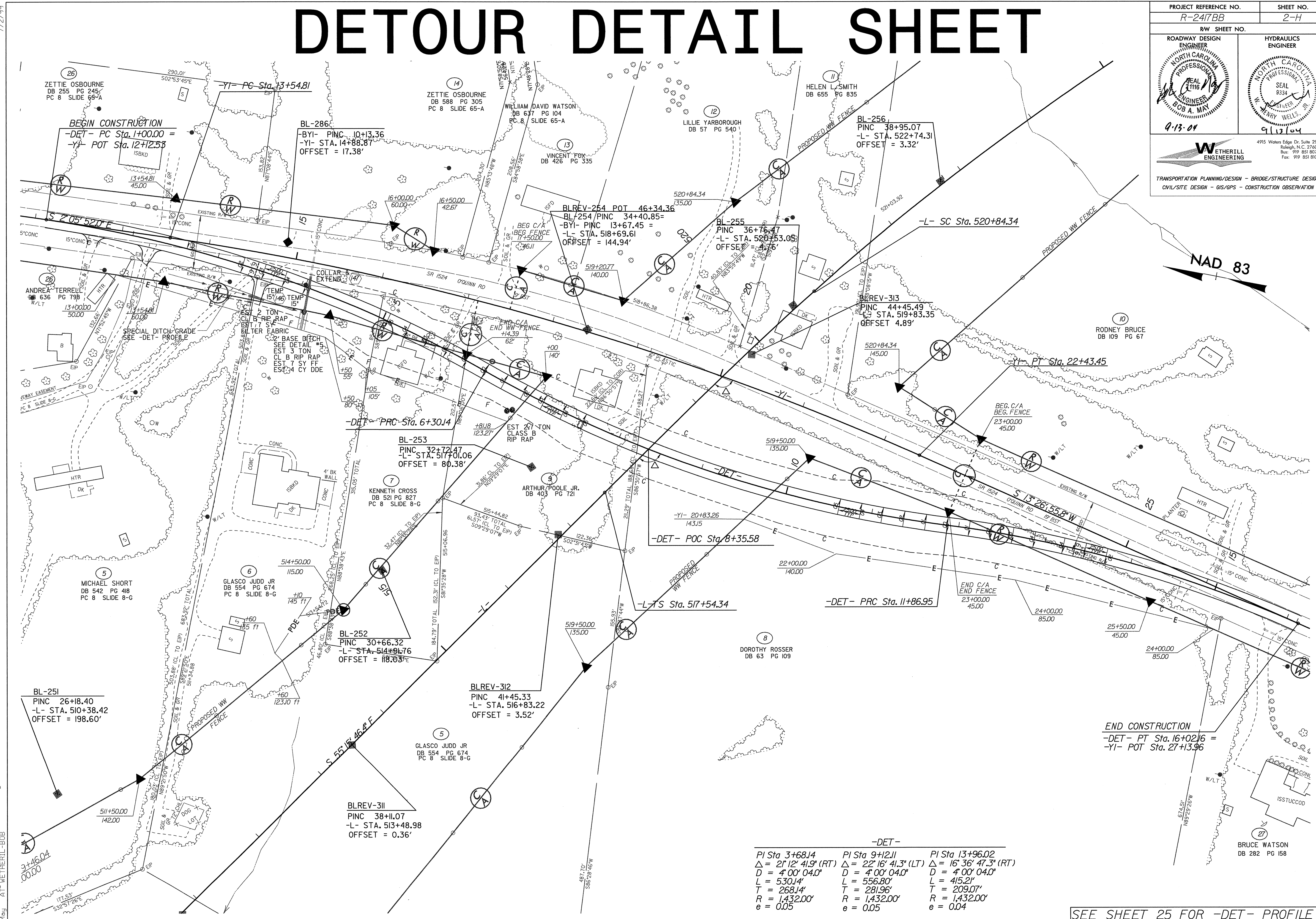


DETOUR DETAIL SHEET

PROJECT REFERENCE NO. R-2417BB	SHEET NO. 2-H
RW SHEET NO.	
ROADWAY DESIGN ENGINEER NORTH CAROLINA PROFESSIONAL SEAL BOB A. MAY 9-13-04	HYDRAULICS ENGINEER NORTH CAROLINA PROFESSIONAL SEAL HENRY WELLS 9-13-04
 WETHERILL ENGINEERING 4915 Waters Edge Dr. Suite 295 Raleigh, N.C. 27606 Fax: 919 851 8077 Fax: 919 851 8107	
TRANSPORTATION PLANNING/DESIGN - BRIDGE/STRUCTURE DESIGN CIVIL/SITE DESIGN - GIS/GPS - CONSTRUCTION OBSERVATION	



14-JUL-2004 09:04
 R-2417bb.RDY_sch.dgn
 B:\proj\2417\B08

-DET-		
PI Sta 3+68.14	PI Sta 9+12.11	PI Sta 13+96.02
$\Delta = 2^\circ 12' 41.9\" (RT)$	$\Delta = 22^\circ 16' 41.3\" (LT)$	$\Delta = 16^\circ 36' 47.3\" (RT)$
$D = 4^\circ 00' 04.0\"$	$D = 4^\circ 00' 04.0\"$	$D = 4^\circ 00' 04.0\"$
$L = 530.14'$	$L = 556.80'$	$L = 415.21'$
$T = 268.14'$	$T = 281.96'$	$T = 209.07'$
$R = 1,432.00'$	$R = 1,432.00'$	$R = 1,432.00'$
$e = 0.05$	$e = 0.05$	$e = 0.04$

SEE SHEET 25 FOR -DET- PROFILE