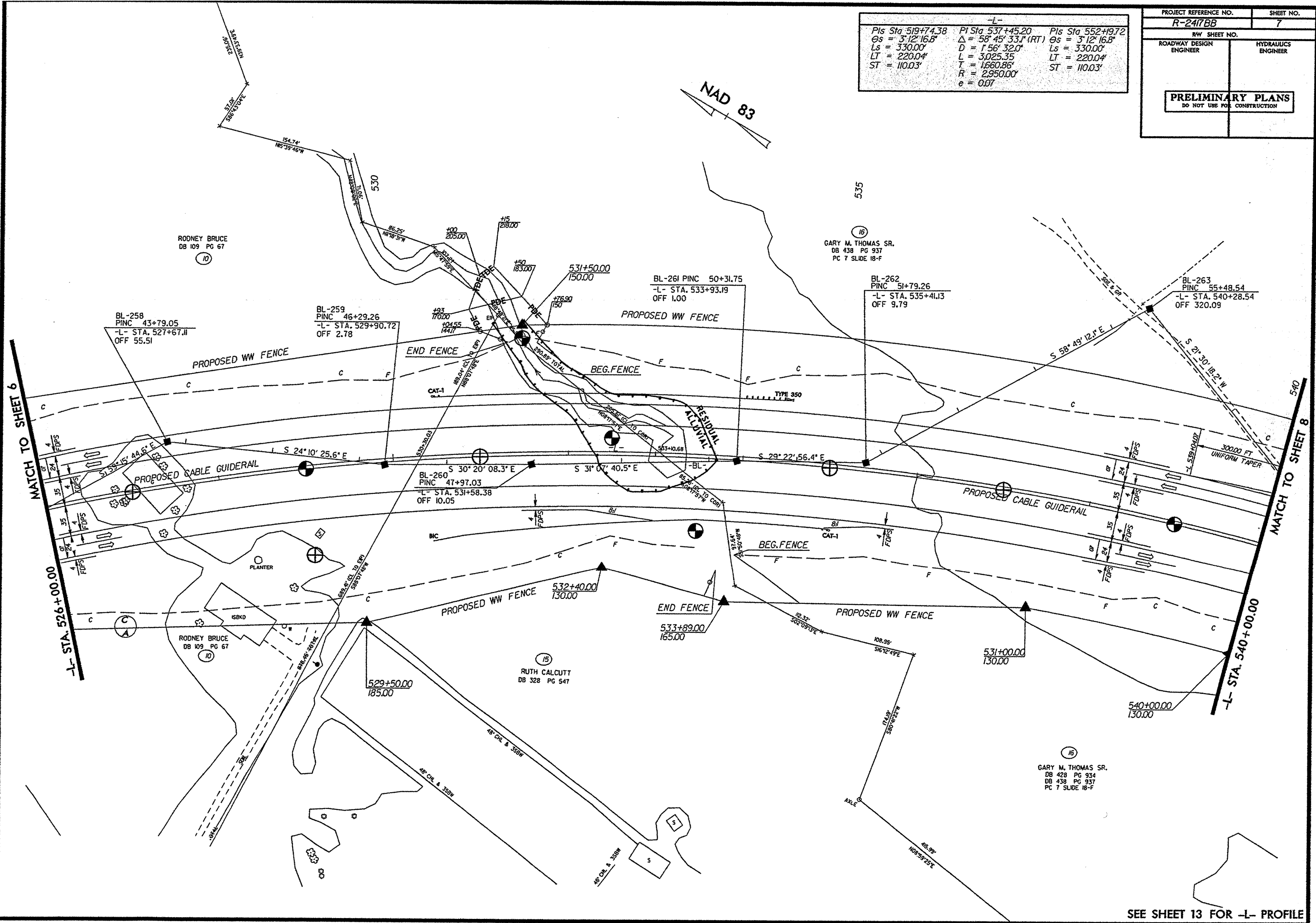


-L-		
Pls Sta 519+74.38	PI Sta 537+45.20	Pls Sta 552+19.72
$\theta_s = 3'12''16.8''$	$\Delta = 58'45''33.1''$ (RT)	$\theta_s = 3'12''16.8''$
$L_s = 330.00'$	$D = 1'56''32.0''$	$L_s = 330.00'$
$LT = 220.04'$	$L = 3025.35'$	$LT = 220.04'$
$ST = 110.03'$	$T = 1660.86'$	$ST = 110.03'$
	$R = 2,950.00'$	
	$e = 0.07$	

PROJECT REFERENCE NO. R-2417BB	SHEET NO. 7
RW SHEET NO.	
ROADWAY DESIGN ENGINEER	HYDRAULICS ENGINEER
PRELIMINARY PLANS DO NOT USE FOR CONSTRUCTION	



NAD 83

MATCH TO SHEET 6

MATCH TO SHEET 8

-L- STA. 526+00.00

-L- STA. 540+00.00

SEE SHEET 13 FOR -L- PROFILE