

SUPERSTRUCTURE REINFORCING STEEL LENGTHS ARE BASED ON THE FOLLOWING MINIMUM SPLICE LENGTHS

BAR SIZE	SUPERSTRUCTURE EXCEPT APPROACH SLABS, PARAPET, AND BARRIER RAIL		APPROACH SLABS		PARAPET AND BARRIER RAIL
	EPOXY COATED	UNCOATED	EPOXY COATED	UNCOATED	
#4	2'-0"	1'-9"	2'-0"	1'-9"	2'-9"
#5	2'-6"	2'-2"	2'-6"	2'-2"	3'-5"
#6	3'-0"	2'-7"	3'-10"	2'-7"	4'-4"
#7	5'-3"	3'-6"	—	—	—
#8	6'-10"	4'-7"	—	—	—

— SUPERSTRUCTURE BILL OF MATERIAL —

	CLASS AA CONCRETE			REINFORCING STEEL (LBS.)	EPOXY COATED REINFORCING STEEL (LBS.)
	POUR 1 (CU. YARDS)	POUR 2 (CU. YARDS)	TOTAL (CU. YARDS)		
SPAN "A" AND "B"	63.1	156.9	220.0	22,012	25,287
TOTALS**			220.0	22,012	25,287

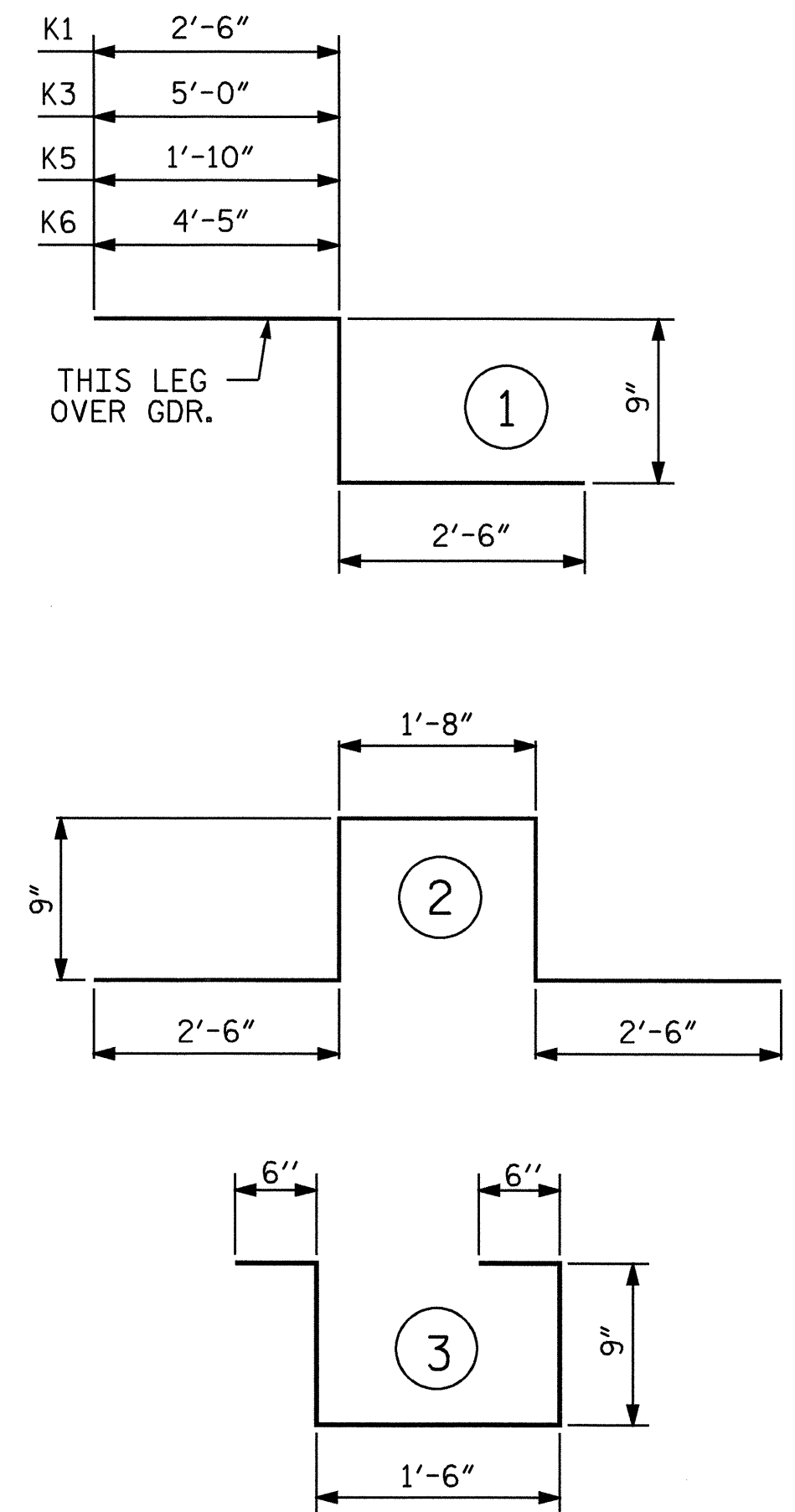
** QUANTITIES FOR BARRIER RAIL ARE NOT INCLUDED

REINFORCING BAR SCHEDULE

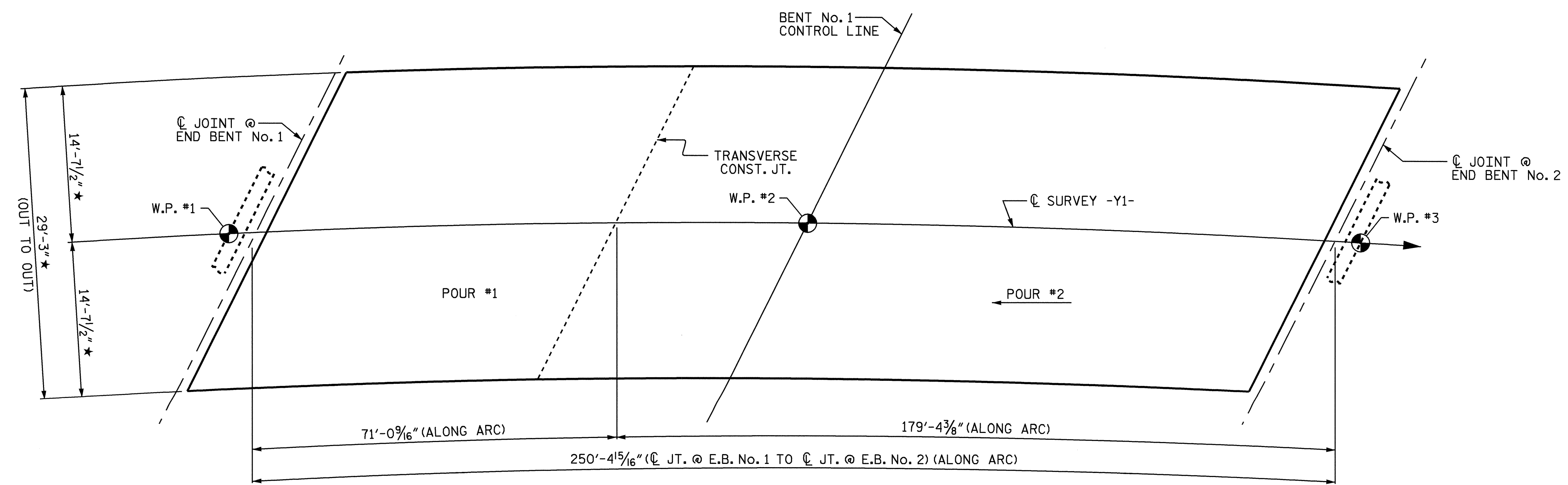
BAR NO	SIZE	TYPE	LENGTH	WEIGHT	BAR NO	SIZE	TYPE	LENGTH	WEIGHT		
* A1	404	5	STR	28'-9"	12114	* B1	170	5	STR	52'-1"	9235
A2	404	5	STR	28'-9"	12114	B2	93	5	STR	28'-3"	2740
* A101	2	5	STR	26'-7"	55	B3	155	5	STR	51'-10"	8380
* A102	2	5	STR	24'-4"	51	B4	2	5	STR	54'-10"	114
* A103	2	5	STR	22'-1"	46	B5	4	5	STR	47'-5"	198
* A104	2	5	STR	19'-10"	41	B6	5	5	STR	48'-10"	255
* A105	2	5	STR	17'-7"	37	B7	2	5	STR	42'-8"	89
* A106	2	5	STR	15'-4"	32	B8	1	5	STR	43'-7"	45
* A107	2	5	STR	13'-1"	27	B9	1	5	STR	17'-3"	18
* A108	2	5	STR	10'-10"	23	B10	2	5	STR	36'-5"	76
* A109	2	5	STR	8'-7"	18	B11	1	5	STR	30'-2"	31
* A110	2	5	STR	6'-4"	13	* G1	1	5	STR	32'-11"	34
* A111	2	5	STR	4'-1"	9	* G2	1	5	STR	31'-8"	33
* A112	2	5	STR	26'-6"	55	* K1	3	5	1	5'-9"	18
* A113	2	5	STR	24'-2"	50	* K2	12	5	2	8'-2"	102
* A114	2	5	STR	21'-10"	46	* K3	3	5	1	8'-3"	26
* A115	2	5	STR	19'-6"	41	* K4	18	5	STR	7'-6"	141
* A116	2	5	STR	17'-2"	36	* K5	3	5	1	5'-1"	16
* A117	2	5	STR	14'-10"	31	* K6	3	5	1	7'-8"	24
* A118	2	5	STR	12'-6"	26	* S1	42	4	3	4'-0"	112
* A119	2	5	STR	10'-2"	21						
* A120	2	5	STR	7'-10"	16						
* A121	2	5	STR	5'-6"	11						
* A122	2	5	STR	3'-2"	7						
A201	2	5	STR	26'-7"	55						
A202	2	5	STR	24'-4"	51						
A203	2	5	STR	22'-1"	46						
A204	2	5	STR	19'-10"	41						
A205	2	5	STR	17'-7"	37						
A206	2	5	STR	15'-4"	32						
A207	2	5	STR	13'-1"	27						
A208	2	5	STR	10'-10"	23						
A209	2	5	STR	8'-7"	18						
A210	2	5	STR	6'-4"	13						
A211	2	5	STR	4'-1"	9						
A212	2	5	STR	26'-6"	55						
A213	2	5	STR	24'-2"	50						
A214	2	5	STR	21'-10"	46						
A215	2	5	STR	19'-6"	41						
A216	2	5	STR	17'-2"	36						
A217	2	5	STR	14'-10"	31						
A218	2	5	STR	12'-6"	26						
A219	2	5	STR	10'-2"	21						
A220	2	5	STR	7'-10"	16						
A221	2	5	STR	5'-6"	11						
A222	2	5	STR	3'-2"	7						

REINFORCING STEEL LBS. 22012
 * EPOXY COATED REINFORCING STEEL LBS. 25287

BAR TYPES



ALL BAR DIMENSIONS ARE OUT TO OUT

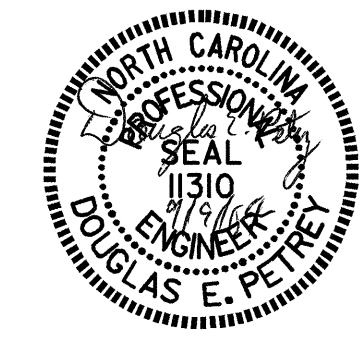


CONCRETE POURING SEQUENCE LAYOUT FOR COMPUTING AREA OF REINFORCED CONCRETE DECK SLAB
 (SQ. FT. = 7,325)
 * RADIAL DIMENSIONS

GROOVING BRIDGE FLOORS

APPROACH SLABS	1,539	SQ.FT.
BRIDGE DECK	5,749	SQ.FT.
TOTAL	7,288	SQ.FT.

PROJECT NO. R-2417BB
LEE COUNTY
 STATION: 519+42.20 -L-



STATE OF NORTH CAROLINA
 DEPARTMENT OF TRANSPORTATION
 RALEIGH

STANDARD SUPERSTRUCTURE BILL OF MATERIAL

REVISIONS						SHEET NO.
NO.	BY	DATE	NO.	BY	DATE	S-18
1			3			TOTAL SHEETS
2			4			78

ASSEMBLED BY : M. ALLEN	DATE : 9/03
CHECKED BY : B.N. GRADY	DATE : 11/03
DRAWN BY : JMB 5/87	REV. 6/1/94 EEM/GRP
CHECKED BY : SJD 9/87	REV. 8/16/99 RWW/LES